

Technical specification:

Rated voltage: IEC 61076-2-101	4pos 5pos 250 V 60 V
Current rating: IEC 61076-2-101	4 A at 40°C
Insulation resistance: IEC 60512-2	>=100 MΩ
Pollution degree: IEC 60664-1	3/2
Degree of protection: IEC 60529	IP 67, in mated condition
Temperature range: IEC 60664-1	-30°C ... +85°C
Mating cycles: IEC 60512-9a	>=100

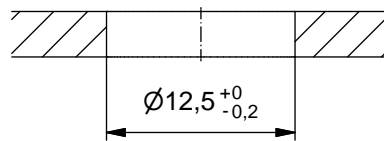
Materials:

Contact:	CuZn
Contact plating:	Nickel, gold plated
Contact carrier:	PA 6.6, UL 94
Sealing:	FPM
Socket housing:	CuZn, nickel plated
Shroud:	Spring steel
-plating:	Tin plated

Installation specification:

recommended torque:	0,8-1 Nm
Conec installation tool:	Torque wrench: 36-000200 Insert across flats 15: 36-000320

feedthrough



Part no:	Description:	Pos	Note:
43-01170	SAL - 12 - FKH4 - X10	4	
43-01171	SAL - 12S - FKH4 - X10	4	with shroud
43-01172	SAL - 12 - FKH5 - X10	5	
43-01173	SAL - 12S - FKH5 - X10	5	with shroud

DO NOT ALTER CAD DRAWING BY HAND	Directive 2002/95/EC RoHS compliant	Index: b 23.03.11 fro Ä3914 Data sheet revised, technical specification changed	dim. in mm	title: Female socket M12x1 axial, backmounting, dip solder, X10								
		<table border="1" style="width: 100%; border-collapse: collapse;"> <tr> <td style="width: 10%;"></td> <td style="width: 10%;">date</td> <td style="width: 80%;">name</td> </tr> <tr> <td>drawn</td> <td>10.10.07</td> <td>Fromm</td> </tr> <tr> <td>appd.</td> <td>18.10.07</td> <td>W. Schmidt</td> </tr> </table>			date	name	drawn	10.10.07	Fromm	appd.	18.10.07	W. Schmidt
			date	name								
		drawn	10.10.07	Fromm								
appd.	18.10.07	W. Schmidt										
THIS DRAWING MAY NOT BE COPIED OR REPRODUCED IN ANY WAY, AND MAY NOT BE PASSED ON TO A THIRD PARTY WITHOUT WRITTEN PERMISSION. OWNERSHIP AND COPYRIGHT OF CONEC GmbH		43K1A499										
			part no:									