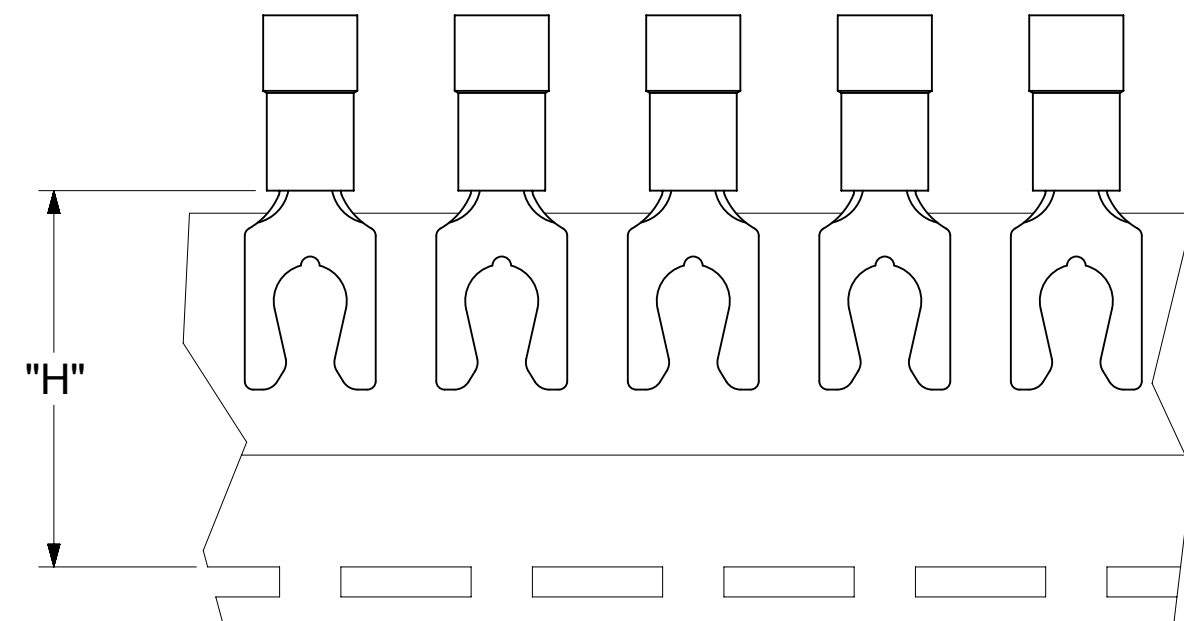
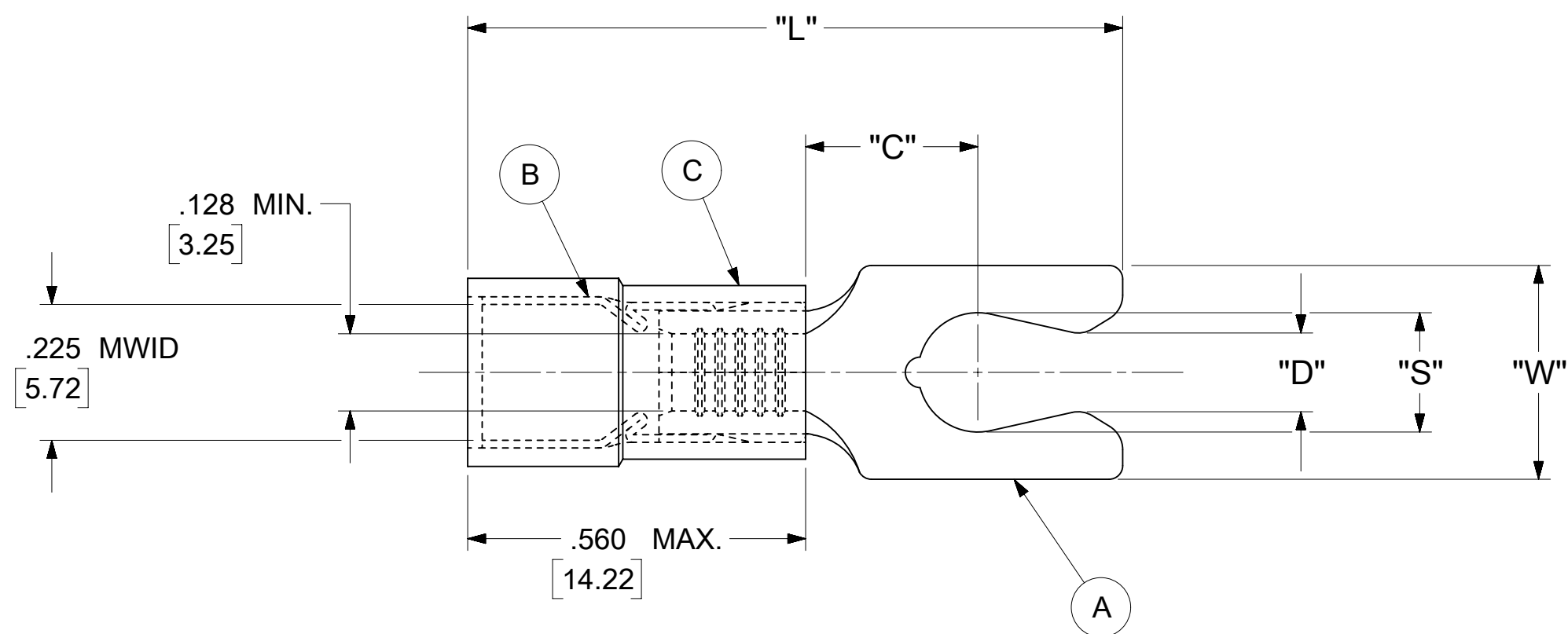


| LOOSE PIECE | | TAPE MOUNTED | | SPECIFICATIONS | | | | | | | |
|-----------------|--------------------|-----------------|--------------------|----------------|---------------------|---------------------|-------------|---------------|---------------------|--------------|----------------------------------|
| MATERIAL NUMBER | ENGINEERING NUMBER | MATERIAL NUMBER | ENGINEERING NUMBER | STUD SIZE | "S" ±.005 [0.13] | "W" ±.010 [0.25] | "C" MIN. | "L" MAX. | "D" ±.005 [0.13] | "H" | STOCK ±.001 [0.025] THICKNESS |
| 191150046 | C-8718-08 | 191150047 | C-8718-08T | 8 | .173 [4.39] | .310 [7.87] | .261 [6.63] | 1.031 [26.19] | .139 [3.53] | .980 [24.89] | .040 [1.02] |
| 191150048 | C-8719-10 | 191150049 | C-8719-10T | 10 | .198 [5.03] | .330 [8.38] | .261 [6.63] | 1.079 [27.41] | .156 [3.96] | .980 [24.89] | .040 [1.02] |



PARTS ON TAPE

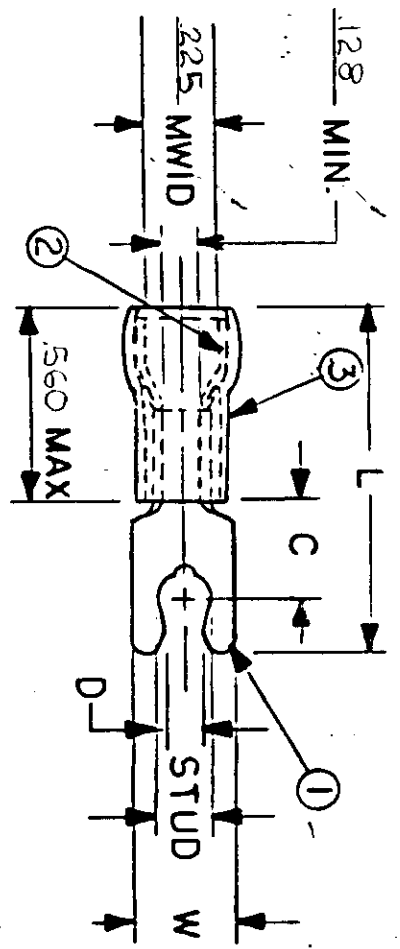
- NOTES:
- MATERIAL:
 - (A). TERMINAL: COPPER
 - PLATING: ELECTRO-TIN (.0003 MIN.)
 - (B). TIN-PLATED BRASS FUNNEL FERRULE
 - (C). INSULATION: NYLON (YELLOW)
 - MWID: MAXIMUM WIRE INSULATION DIAMETER
 - WIRE SIZE: 12 -10 AWG
4.0 -6.0 MM²
 - "UL" LISTING #E32244
"CSA" LISTING #18689
 - ALL DIMENSIONS IN INCHES/[MM].
 - PARTS ARE ROHS COMPLIANT.
 - DIMS. SHOWN ARE FOR REFERENCE ONLY.

| | | | | | | | | | | |
|---------|---|---|-------|---|---|--|--|--|--|--|
| SYMBOLS | THIS DRAWING CONTAINS INFORMATION THAT IS PROPRIETARY TO MOLEX ELECTRONIC TECHNOLOGIES, LLC AND SHOULD NOT BE USED WITHOUT WRITTEN PERMISSION | | | | | | | | | |
| | DIMENSION UNITS | | SCALE | | CURRENT REV DESC: MIGRATION TO ECTR/NX | | | | | |
| | INCH/MM | | NTS | | EC NO: 620952 DRWN: ABENJAMINLW 2019/06/27 CHK'D: GROJAS01 2019/07/19 APPR: JMACNEIL 2019/08/05 INITIAL REVISION: DRWN: GZ 1985/04/05 APPR: JMACNEIL 2019/08/05 | | | | | |
| | GENERAL TOLERANCES (UNLESS SPECIFIED) | | | | | | | | | |
| ∇ = 0 | 4 PLACES | ± | --- | ± | --- | PRODUCT CUSTOMER DRAWING DOCUMENT NUMBER: 191150046 DOC TYPE: PSD DOC PART: 000 REVISION: A | | | | |
| ∇ = 0 | 3 PLACES | ± | --- | ± | .005 | | | | | |
| ∇ = 0 | 2 PLACES | ± | 0.13 | ± | .01 | MATERIAL NUMBER: SEE TABLE CUSTOMER: GENERAL MARKET SHEET NUMBER: 1 OF 1 | | | | |
| ∇ = 0 | 1 PLACE | ± | 0.25 | ± | --- | | | | | |
| ∇ = 0 | 0 PLACES | ± | --- | ± | --- | DRAFT WHERE APPLICABLE MUST REMAIN WITHIN DIMENSIONS THIRD ANGLE PROJECTION DRAWING: C-SIZE SERIES: 19115 | | | | |
| ∇ = 0 | ANGULAR TOL | ± | 0.5° | | | | | | | |

NOTES:

- ① MAT'L: COPPER, STOCK TKN .040 ±.001
PLATING: ELECTRO-TIN (.0003 MIN)
- ② TIN-PLATED BRASS FUNNEL FERRULE
- ③ NYLON INSULATION (YELLOW)
- ④ "UL" LISTING #E32244
"CSA" LISTING 18689

FILE NO. C-CD-805-03



MWID = MAX. WIRE INSULATION DIA.

WIRE SIZE: 12-10 AWG.
4.0-6.0 MM²

| PART NUMBER | "W" ±.010 | "C" MIN. | "L" MAX. | "D" ±.005 | AVAILABLE STUD SIZES |
|-------------|-----------|----------|----------|-----------|----------------------|
| C-8718- | .310 | .261 | 1.031 | .139 | 08 (.173 ±.005) |
| C-8719- | .330 | .261 | 1.079 | .156 | 10 (.198 ±.005) |
| | | | | | |
| | | | | | |
| | | | | | |
| | | | | | |

| | | | | | |
|---|------|-----------|--------------|--------|----------------------------------|
| DIMENSIONAL TOLERANCES UNLESS OTHERWISE SPECIFIED | | REFERENCE | SCALE: NTS | DATE | TITLE: |
| FRAC. | DEC. | ANG. | DRWN. BY: G7 | 4.5.96 | SNAP SPADE SHORT TONGUE TERMINAL |
| ± | ± | ± | CHKD. BY: | | AVIKRIMP-800 SERIES |
| ± | ± | ± | APPRD. BY: | | |
| ± | ± | ± | | | |



DWG. NO. A CUSTOMER DWG.