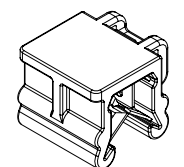
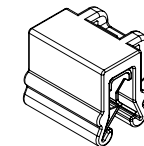
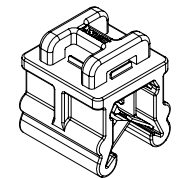
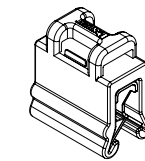
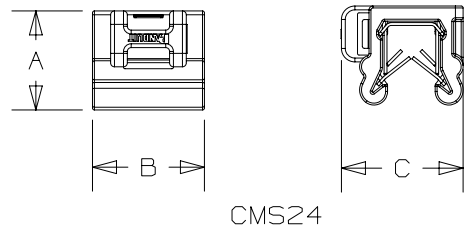
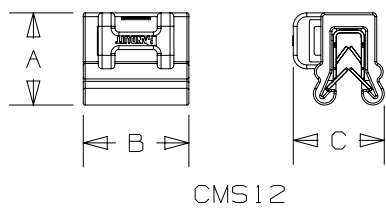
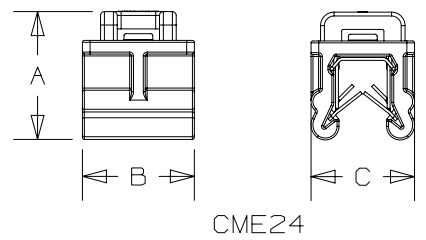
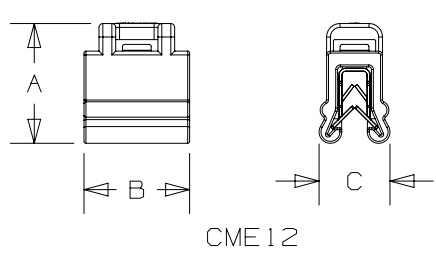


PART NUMBER	PANEL THICKNESS	USED WITH CABLE TIES	DIMENSIONS - IN (mm)			WEIGHT g/100 PIECES
			A	B	C	
CME12-M300	.028-.118 (.7mm-3mm)	M, I, S	.62 (15.7mm)	.55 (14.0mm)	.37 (9.4mm)	150
CMS12-M300			.48 (12.2mm)	.55 (14.0mm)	.47 (11.9mm)	140
CME24-M300	.118-.236 (3mm-6mm)		.67 (17.0mm)	.58 (14.7mm)	.54 (13.7mm)	199
CMS24-M300			.52 (13.2mm)	.58 (14.7mm)	.63 (16.0)	189

NOTES:

- MATERIAL:
  - EDGE CLIP (-300)
  - MOLDED BODY: HEAT STABILIZED WEATHER RESISTANT NYLON 6.6
  - METAL CLIP: STEEL, ZINC PLATED.
- NO INSTALLATION TOOL IS NEEDED TO AFFIX THE EDGE CLIP TO PANEL EDGE; USE PANDUIT GTS-E OR EQUIVALENT TOOL FOR TENSION AND CUT OF THE CABLE TIE.



REV	DATE	BY	CHK	APR	DESCRIPTION	ECN
00	7/13/20	JHNU	MDS	RMHI	DRAWING RELEASED	084624

TITLE <b>EDGE CLIP</b> (SEE PART NUMBERS IN TABLE) CUSTOMER DRAWING	
ITEM REVISION NAME 01688NCE/00	<b>PANDUIT</b>
DATASET FILE NAME 01688NCE-DC/00	
UNLESS OTHERWISE SPECIFIED, DIMENSIONAL TOLERANCES ARE: IN [ mm ]	
.x ± .1 [ 2.54 ]	.xxx ± .005 [ .127 ]
.xx ± .01 [ .25 ]	ANGLES ± 5 °
THIRD ANGLE PROJECTION	
DRAWN BY JHNU	DATE 7/13/20
CHK MDS	SCALE FULL
DRAWING NUMBER: 01688NCE-DC	
SHT 1 OF 1	
SIZE B	

D10100DB/17