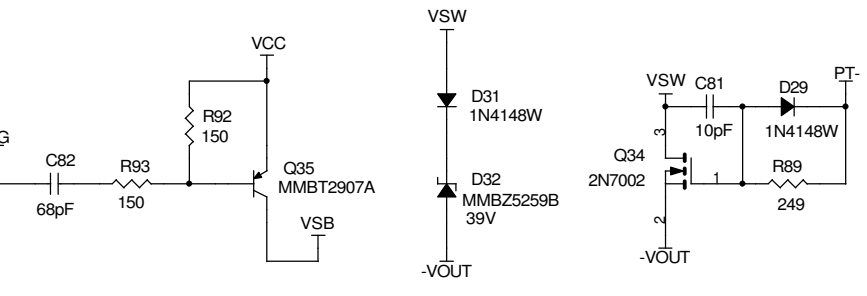


NOTE:
 1uF, 100V CER TDK C3225X7R2A105M(1210)
 22uF, 16V CER TDK C3225X5R1C226M(1210)
 39uF, 100V Sanyo 100ME39AX
 47uF, 10V Taiyo Yuden LMK325BJ476MM-B(1210)
 69uF, 16V Sanyo 6TQC68M
 L1 Vishay IHLP-2525CZER1R0M-01
 L2 PULSE PA1393.302
 Q26 FM7T618
 Q32 FM7T718
 T1 Pulse PA0801 (4:4:4)
 T2 Pulse PA0297 2(1.4mH):1:1



CUSTOMER NOTICE
 LINEAR TECHNOLOGY HAS MADE A BEST EFFORT TO DESIGN A CIRCUIT THAT MEETS CUSTOMER-SUPPLIED SPECIFICATIONS; HOWEVER, IT REMAINS THE CUSTOMER'S RESPONSIBILITY TO VERIFY PROPER AND RELIABLE OPERATION IN THE ACTUAL APPLICATION. COMPONENT SUBSTITUTION AND PRINTED CIRCUIT BOARD LAYOUT MAY SIGNIFICANTLY AFFECT CIRCUIT PERFORMANCE OR RELIABILITY. CONTACT LINEAR TECHNOLOGY APPLICATIONS ENGINEERING FOR ASSISTANCE.
 THIS CIRCUIT IS PROPRIETARY TO LINEAR TECHNOLOGY AND SUPPLIED FOR USE WITH LINEAR TECHNOLOGY PARTS.

CONTRACT NO.	
APPROVALS	DATE
DRAWN J. WU	11/1/06
CHECKED	
APPROVED	
ENGINEER K. Mathews	11/1/06
DESIGNER	
Monday, December 03, 2007	

		1630 McCarthy Blvd. Milpitas, CA 95035 Phone: (408)432-1500 Fax: (408)434-0507	
		TITLE LTC3725EMSE, LTC3726EGN 100W, 36V - 72Vin to 12V/12A Isolated Forward Converter	
SIZE	CAGE CODE	DWG NO	REV
		DC1032A	A
SCALE:	FILENAME:	SHEET	OF
		1	1