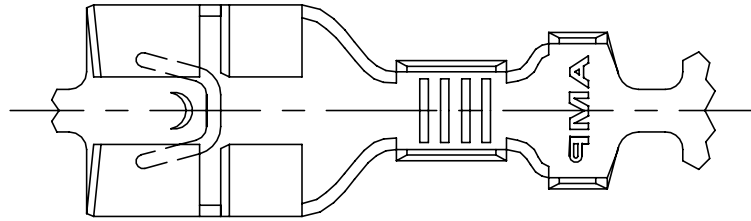
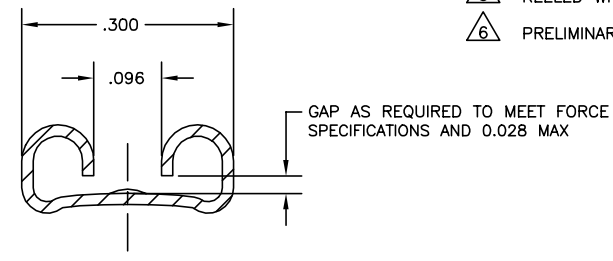


THIS DRAWING IS UNPUBLISHED. RELEASED FOR PUBLICATION  
 © COPYRIGHT - By - ALL RIGHTS RESERVED.

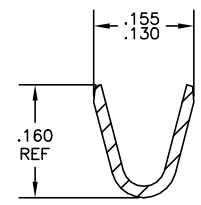
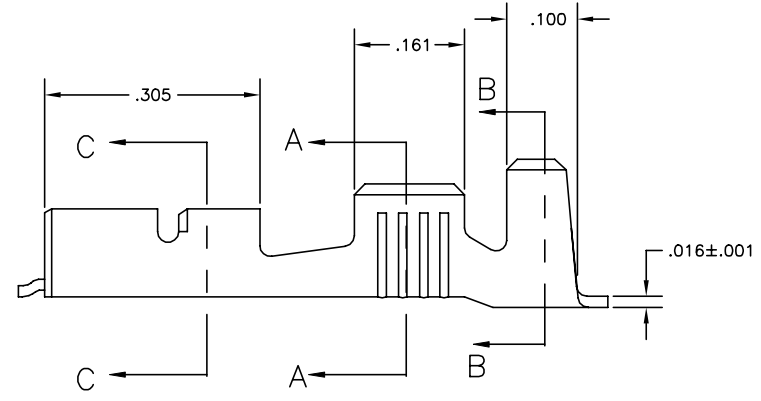
REVISIONS					
P	LTR	DESCRIPTION	DATE	DMN	APFD
R1		REVISED PER ECR-20-009164	14AUG2020	MK	DH



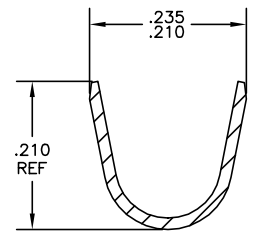
- 1 CONTINUOUS STRIP ON REELS
- △1 ACCEPTS #18-#14 AWG WIRE SIZE
- 3 INSULATION RANGE IS .120-.170 DIA
- 4 MATING TAB THK IS 0.033-0.030
- △5 REELED WITH INTERLEAVING PAPER
- △6 PRELIMINARY - NOT FOR PRODUCTION



SECTION C-C



SECTION A-A



SECTION B-B

△5	STANDARD	.000080 MIN TIN	△6	1-63306-0
OBSOLETE	REVERSE	-		63306-3
	STANDARD	TIN		63306-2
	STANDARD	-		63306-1
	REELING	FINISH		PART NO

THIS DRAWING IS A CONTROLLED DOCUMENT.

DMN	JR RUTH	20JUN02
CHK	P DESANTIS	20JUN02
APPD	P DESANTIS	20JUN02

TE Connectivity

RECEPTACLE, FASTON, .250 SERIES

MATERIAL	BRASS	FINISH	SEE TABLE
SIZE	A2	CAGE CODE	00779
DRAWING NO	C=63306		RESTRICTED TO
CUSTOMER DRAWING	SCALE	8:1	SHEET 1 of 1 REV R1