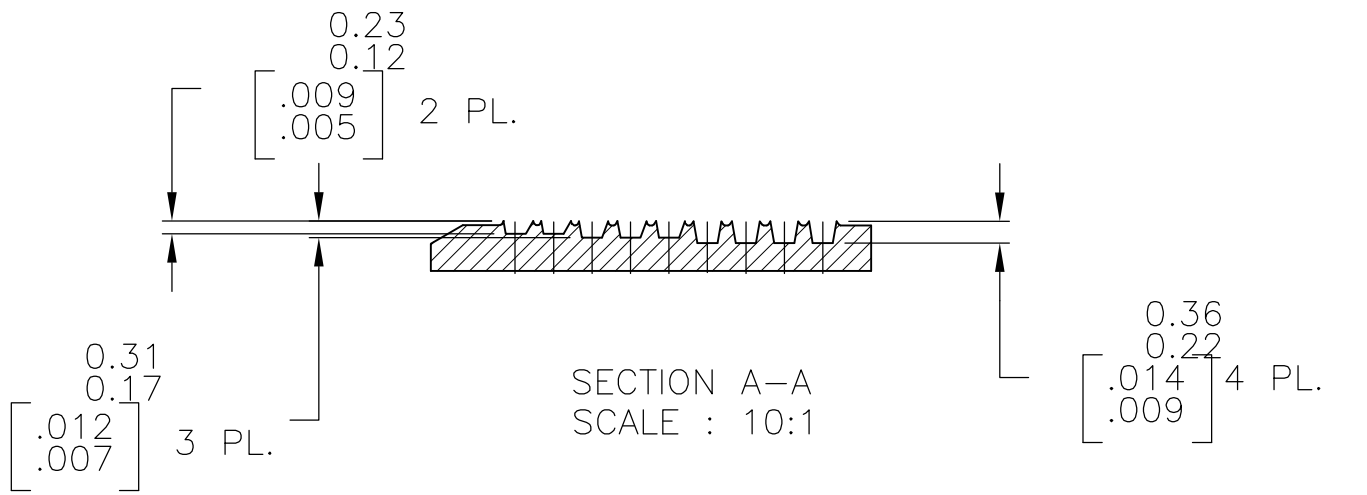
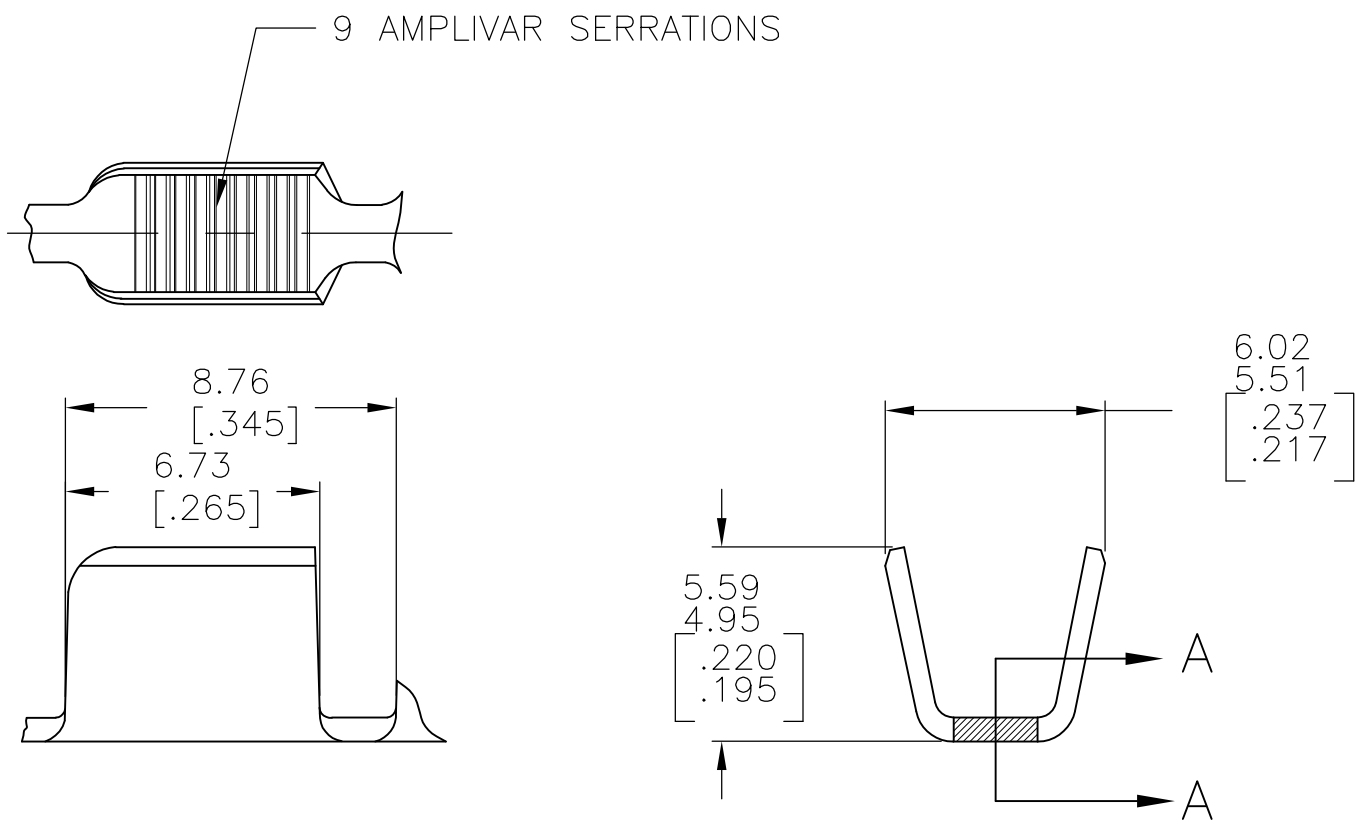


THIS DRAWING IS UNPUBLISHED. RELEASED FOR PUBLICATION
 © COPYRIGHT - By - ALL RIGHTS RESERVED.

LOC	DIST	REVISIONS			
P	LTR	DESCRIPTION	DATE	DWN	APVD
AF	50	D4	REVISE PER ECR-15-011170	07AUG2015	GRZ JL

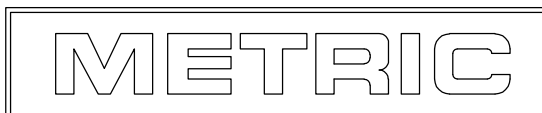


1. PRODUCT PROVIDED IN STRIP FORM ON REELS; BREAKS MAY BE PRESENT.
 2. DIMENSIONS IN BRACKETS ARE IN INCHES.
 3. CRIMP WIDTH: .180 F (AMPLIVAR TYPE)
 CRIMP HEIGHT (±.002)=(TOTAL CMA+20,600)/310,500

 CRIMP WIDTH: .220 F (AMPLIVAR TYPE)
 CRIMP HEIGHT (±.002)=(TOTAL CMA+24,000)/384,000
- GENERAL APPLICATION GUIDELINES MUST BE FOLLOWED AS SPECIFIED IN CATALOG #82221
 FOR APPLICATOR INFORMATION CALL : 1-800-722-1111
 FOR PRODUCT INFORMATION CALL : 1-800-522-6752

⚠ NOT FOR USE WITH ALUMINUM MAGNET WIRE.
 USE WITH COPPER MAGNET WIRE ONLY.

TIN	62309-2
-	⚠ 62309-1
Finish	PART NO.



THIS DRAWING IS A CONTROLLED DOCUMENT.		DWN RAGHAVENDRA 31JAN06	STE TE Connectivity	
DIMENSIONS: mm [INCHES]		CHK G.D.PORTA		
TOLERANCES UNLESS OTHERWISE SPECIFIED:		APVD G.D.PORTA	NAME SPLICE, AMPLIVAR 5000-10000 CMA	
0 PLC ± -		PRODUCT SPEC -	APPLICATION SPEC 114-2003	
1 PLC ± -		APPLICATOR SPEC -	SIZE A3	CAGE CODE 00779
2 PLC ± 0.38[.015]		FINISH TIN PL.	DRAWING NO C-62309	RESTRICTED TO -
3 PLC ± -		MATERIAL REF 0.64±0.03 [.025±.001] BRASS	SCALE 5:1	SHEET 1 OF 1
4 PLC ± -			REV D4	
ANGLES ± 1°				
CUSTOMER DRAWING				