

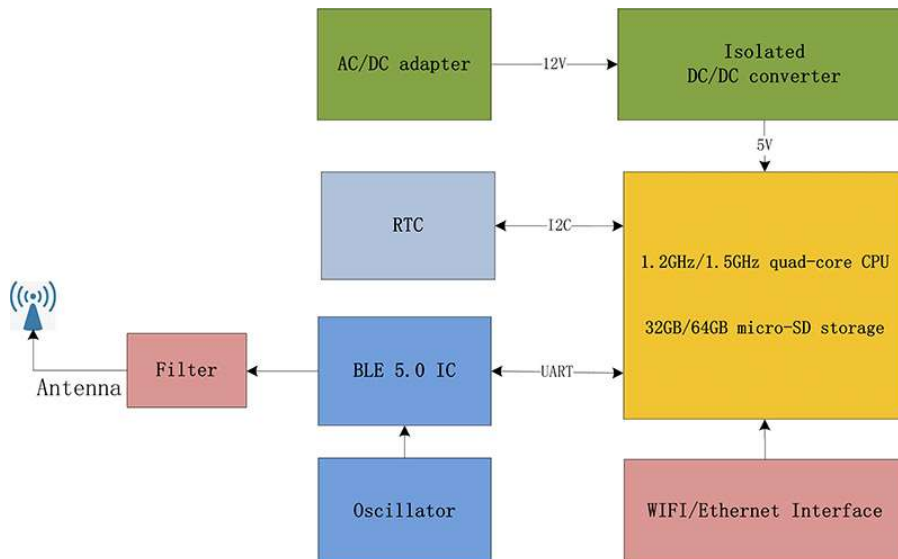


Wireless gateway GU200 connects multiple wireless low power sensors such as SVT100-A and SVT100-T to user's servers and clouds. GU200 includes a powerful microcontroller for real-time data visualization. It integrates a time-series database InfluxDB for data review and analysis. Data can be further transferred to user's private clouds or servers via MQTT protocol. GU200 can be accessed with a web browser, so there is no software installation required and it is ready to use immediately.



Wireless gateway GU200

Models	GU200	GU200s
Microcontroller	ARM Cortex-A53 1.2Ghz 64 bit	ARM Cortex-A72 1.5Ghz 64 bit
Operating system	Linux Debian	
RAM	1GB	2GB
Data storage	32GB	64GB
Network interface	WIFI/Ethernet	WIFI/Gigabit Ethernet
Sensor interface	2.4GHz ultra low power protocol (FCC approved)	
Number of wireless sensors	Up to 256 (8 temperature sensors, 248 vibration temperature sensors). Recommended usage: Up to 8 temperature sensors, up to five zones, with three sensors at each zone for the maximum performance	
Power supply	9-18 VDC	
Power consumption	10W	15W
Weight	700g	
Size (L*W*H)	141*126.5*30.5mm	
Working environment	Temperature: -30°C~60°C; humidity: 10%~90%RH	
Additional features	Real-time hardware clock; Over-the-Air update, USB interface	

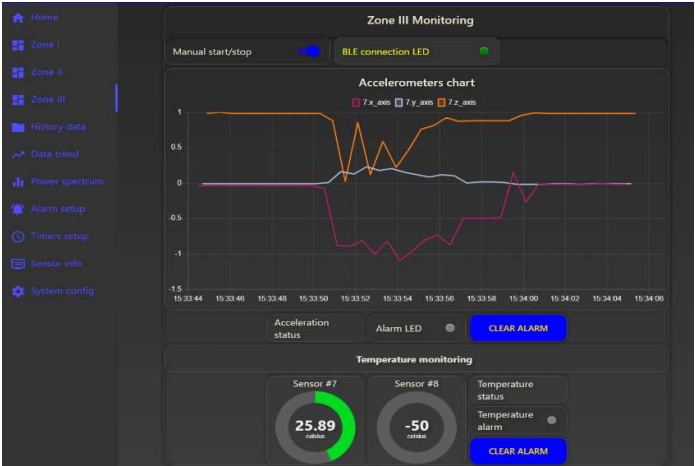


Features	GU200	Competitors
• Plug & Play	✓	✗
• Sensor grouping	✓	✗
• Large storage	✓	✗
• Data visualization	✓	✗
• Data analysis	✓	✗
• Easy upgrade	✓	✗
• Web interface	✓	✗



Software Interface

GU200 software interface is based on Node-RED, which is easy to expand and adjust. InfluxDB database is used for data storage



- Software Advantages**
- Data visualization
 - Real time monitoring
 - Alarm setup
 - Threshold adjustment
 - Monitoring timer
 - Data replay
 - Data trend analysis
 - Power spectrum analysis
 - Parameter adjustment
 - Firmware update
 - Secure data

“Broadsens, sense the broader world”

Website: www.broadsens.com
Sales: sales@broadsens.com
Support: support@broadsens.com

USA Headquarter
 . 1601 McCarthy Blvd, Milpitas, CA, 95035
China Offices
 . 1707-A066, No.9 North Fourth Ring West Rd, Beijing
 . Rm 803, No.152, Huixin Rd, Nanhu District, Jiaxing