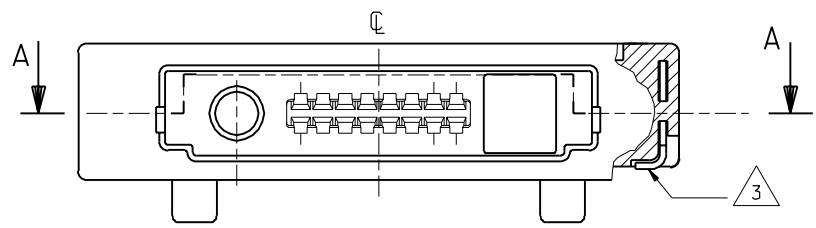
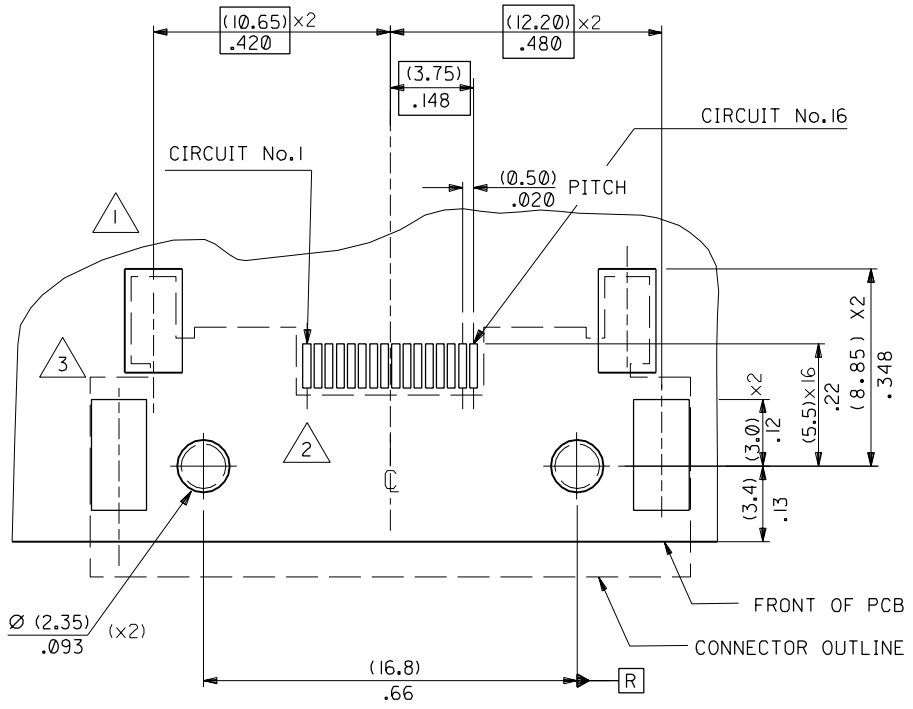
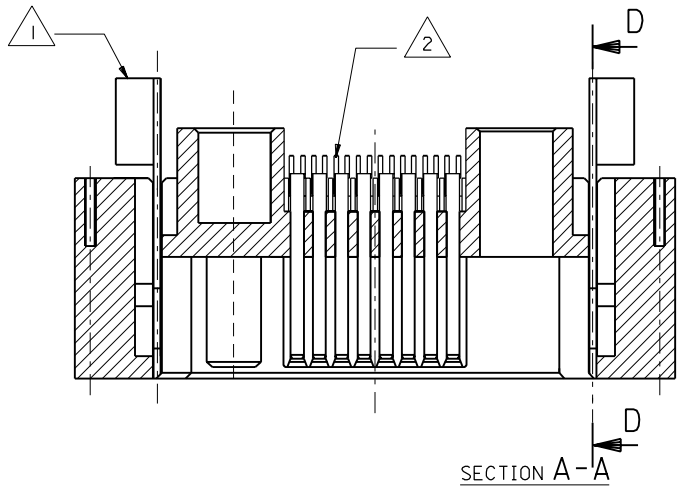


PART NO. SDA-90811-0107  
 DWG. NO. 90811-0107



FOR MISSING DIMENSIONS SEE DRAWING SDA-90811-0109

COMPONENT	PCB PAD DIMENSION	QTY
LOCKING LATCHES <span style="border: 1px solid black; padding: 0 2px;">1</span>	(2.60)/.102 x (4.65)/.183	$\text{⌀} (0.10) / .004 \text{ R} (x2)$
SIGNAL CONTACTS <span style="border: 1px solid black; padding: 0 2px;">2</span>	$(0.35 \pm 0.05) / .014 \pm 0.002 \times (2.0) / .08$	$\text{⌀} (0.10) / .004 \text{ R} (x16)$
SMT RETENTION PADS <span style="border: 1px solid black; padding: 0 2px;">3</span>	(2.50)/.098 x (5.0)/.197	$\text{⌀} (0.10) / .004 \text{ R} (x2)$

FOR PREVIOUS DRAWING ISSUES SEE MRI.

ORIGINAL RELEASE ECN E50434 95.03.29 HDU	DIMENSIONS SHOWN ( METRIC ) INCH UNLESS OTHERWISE SPECIFIED TOLERANCES: ANGULAR $\pm \frac{1}{2}^\circ$	DRWG BY <b>HDU</b>
LTR REVISIONS	INCH ( METRIC )	CHK'D BY
	3 PLACE $\pm .002$	APP'D BY
	2 PLACE $\pm .004$ $\pm 0.05$	SCALE
	1 PLACE $\pm 0.10$	5:1
	DRAFT WHERE APPLICABLE MUST REMAIN WITHIN DIMENSIONS	
	DESIGN DIMENSION (PRIMARY) <input checked="" type="checkbox"/> (MM) <input type="checkbox"/> IN.	
	EQUIVALENT DIMENSION (SECONDARY) <input type="checkbox"/> (MM) <input checked="" type="checkbox"/> IN.	

REVISE ONLY ON CAD SYSTEM		SH.	REV.
CAD/CAM FILENAME S908117 DGN	THIS DRAWING CONTAINS INFORMATION THAT IS PROPRIETARY TO MOLEX INC. & SHOULD NOT BE USED WITHOUT WRITTEN PERMISSION		
TITLE <b>I/O CONNECTOR FOR MOBILE PHONE</b>			
<b>MOLEX EUROPE</b>		SHEET NO. DATE 10F 1 95/03/29	
PART NO. <b>90811-0107</b>	DWG. NO. <b>SDA-90811-0107</b>	SIZE <b>B</b>	