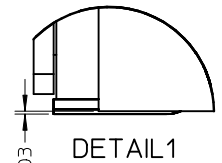
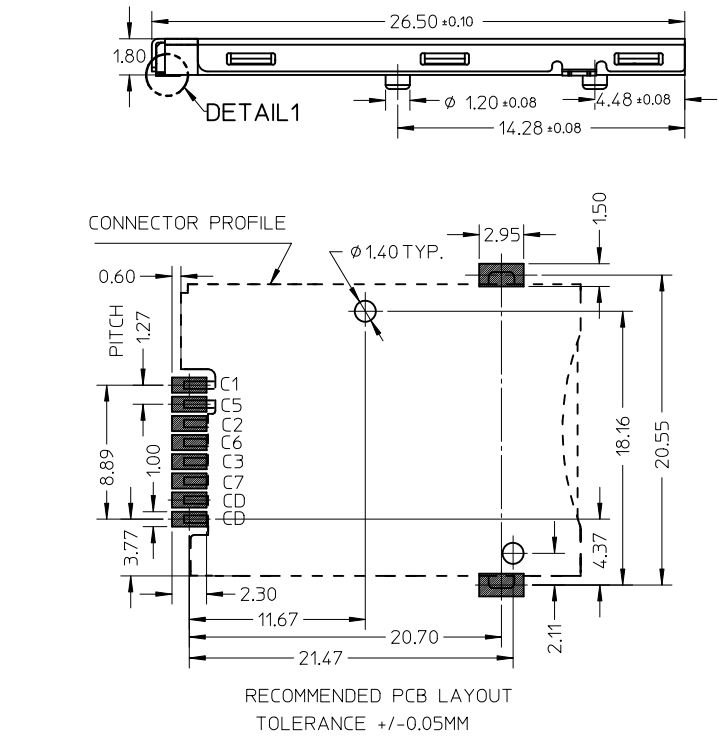


- NOTES:
- 1 FINISH:
- 1-1 TERMINAL :
 - 50-200μ NICKEL UNDER PLATED
 - 30μ MIN GOLD PLATING ON CONTACT AREA
 - 3μ MIN GOLD FLASH ON SOLDERING AREA
 - 1-2 SHELL :
 - 50-200μ NICKEL UNDER PLATED
 - 3μ MIN GOLD FLASH ON SOLDERING AREA
 - 1-3 DETECT PIN :
 - 50-200μ NICKEL UNDER PLATED
 - 3μ MIN GOLD PLATING ON CONTACT AREA
 - 3μ MIN GOLD FLASH ON SOLDERING AREA
 - 1-4 HOUSING:G/F 45%.UL94V-0.BLACK
 - 1-5 HEART CAM :G/F 30%.UL94V-0.BLACK
 - 2 SOLDER TAIL COPLANARITY:0.08MM MAX.
 - 3 TERMINAL TIP MUST SINK INTO HOUSING
 - 4 PRODUCT COMPLIANT TO ROHS DIRECTIVE 2002/95/EC AND ELV DIRECTIVE 2000/53/EC
 - 5 DETECT SWITCH: INSERT CARD=ON (NORMAL=OPEN)
 - 6 SPRING RISE UP DURING PUSH-PUSH PERIOD



NO.	DESCRIPTION	Q'TY	MATERIAL
1	HOUSING	1	HIGH TEMPERATURE THERMOPLASTIC
2	TERMINAL	6	COPPER ALLOY
3	DETECT PIN LOWER	1	COPPER ALLOY
4	DETECT PIN UPPER	1	COPPER ALLOY
5	SHELL	1	STAINLESS STEEL
6	COIL SPRING	1	PIANO WIRE
7	HEART CAM	1	NYLON
8	CAM PIN	1	STAINLESS STEEL

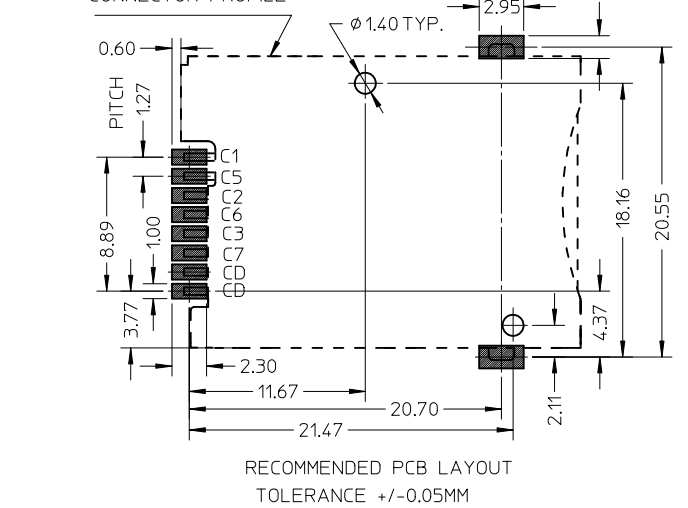
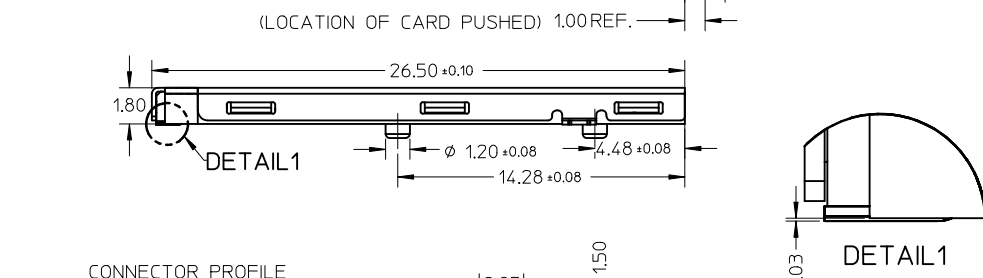
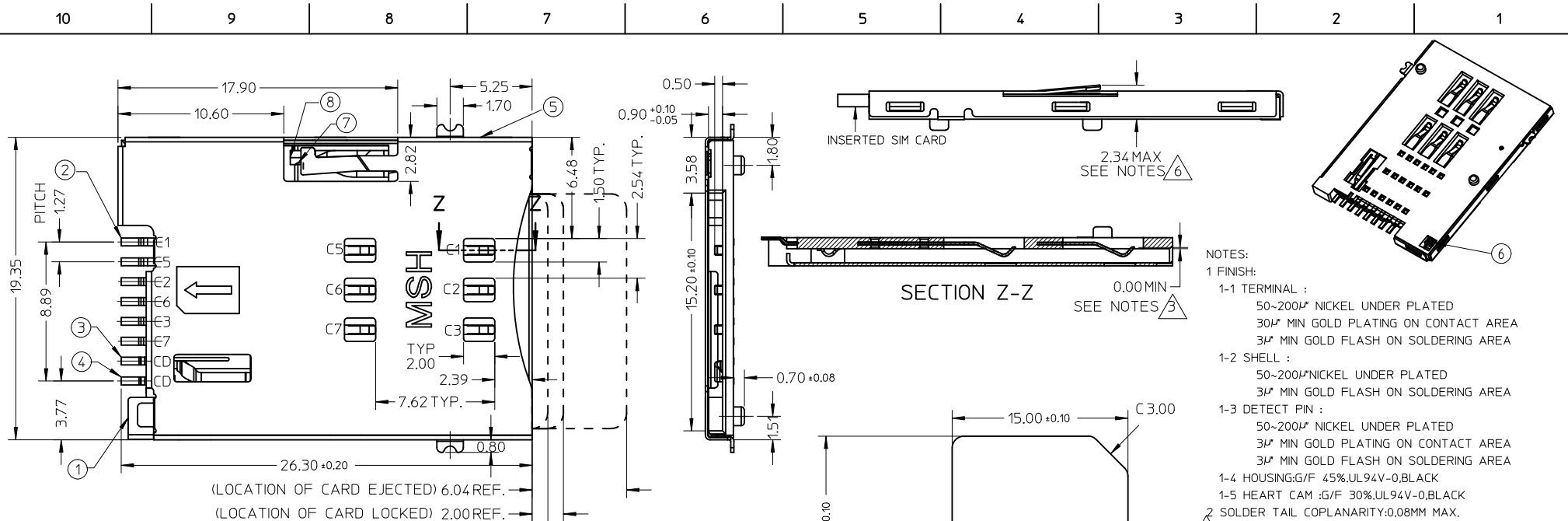


NEW DIM TOL CTRL	EC NO: S2011-0880	2011/04/13	DRW:KHLIM	2011/04/15	CHKD:JIAN02	2011/05/27	APPR:SKTOH
REV	DESCRIPTION	QUALITY SYMBOLS					
T1		F _A =0 F _C =0 F _P =0					

GENERAL TOLERANCES (UNLESS SPECIFIED)	mm	INCH
	4 PLACES ± ---	± ---
	3 PLACES ± ---	± ---
	2 PLACES ± 0.15	± ---
	1 PLACE ± ---	± ---
	ANGULAR ± ---°	
DRAFT WHERE APPLICABLE MUST REMAIN WITHIN DIMENSIONS		

DIMENSION STYLE		SCALE	DESIGN UNITS	THIRD ANGLE PROJECTION
MM ONLY		NTS	METRIC	
DRAWN BY	DATE	TITLE		
LHSHEN	2007/07/09	PUSH PUSH 6 PINS SIM WITH DETECT PIN&POST SALES DRAWING		
CHECKED BY	DATE			
XUXIANG	2007/08/30			
APPROVED BY	DATE			
HWWANG	2007/08/30			
MATERIAL NO.	DOCUMENT NO.			
475531001	SD-47553-101			
SIZE	THIS DRAWING CONTAINS INFORMATION THAT IS PROPRIETARY TO MOLEX INCORPORATED AND SHOULD NOT BE USED WITHOUT WRITTEN PERMISSION			
A3				

MOLEX INCORPORATED		SHEET NO.
		1 OF 1



- NOTES:**
- 1 FINISH:**
 1-1 TERMINAL :
 50-200µ NICKEL UNDER PLATED
 30µ MIN GOLD PLATING ON CONTACT AREA
 3µ MIN GOLD FLASH ON SOLDERING AREA
 1-2 SHELL :
 50-200µ NICKEL UNDER PLATED
 3µ MIN GOLD FLASH ON SOLDERING AREA
 1-3 DETECT PIN :
 50-200µ NICKEL UNDER PLATED
 3µ MIN GOLD PLATING ON CONTACT AREA
 3µ MIN GOLD FLASH ON SOLDERING AREA
 1-4 HOUSING:G/F 45%.UL94V-0.BLACK
 1-5 HEART CAM :G/F 30%.UL94V-0.BLACK
 2 SOLDER TAIL COPLANARITY:0.08MM MAX.
 3 TERMINAL TIP MUST SINK INTO HOUSING
 4 PRODUCT COMPLIANT TO ROHS DIRECTIVE 2002/95/EC AND ELV DIRECTIVE 2000/53/EC
 5 DETECT SWITCH: INSERT CARD=ON (NORMAL=OPEN)
 6 SPRING RISE UP DURING PUSH-PUSH PERIOD
-

NO.	DESCRIPTION	Q'TY	MATERIAL
1	HOUSING	1	HIGH TEMPERATURE THERMOPLASTIC
2	TERMINAL	6	COPPER ALLOY
3	DETECT PIN LOWER	1	COPPER ALLOY
4	DETECT PIN UPPER	1	COPPER ALLOY
5	SHELLL	1	STAINLESS STEEL
6	COIL SPRING	1	PIANO WIRE
7	HEART CAM	1	NYLON
8	CAM PIN	1	STAINLESS STEEL

NEW DIM TOL CTRL EC NO: S2011-0880 DRW:KHLIM 2011/04/13 CHK:D:ITAN02 2011/04/15 APPR:SKTOH 2011/05/27 REV 1	QUALITY SYMBOLS $\nabla_{\delta} = 0$ $\nabla_{\sigma} = 0$ $\nabla_{\beta} = 0$	GENERAL TOLERANCES (UNLESS SPECIFIED)		DIMENSION STYLE MM ONLY		SCALE	DESIGN UNITS	THIRD ANGLE PROJECTION		
		4 PLACES	± ---	± ---	DRAWN BY	DATE	NTS	METRIC	TITLE	
		3 PLACES	± ---	± ---	CHECKED BY	DATE			PUSH PUSH 6 PINS SIM WITH DETECT PIN&POST SALES DRAWING	
		2 PLACES	± 0.15	± ---	APPROVED BY	DATE			MOLEX INCORPORATED	
1 PLACE	± ---	± ---	ANGULAR ± ---°		MATERIAL NO.	DOCUMENT NO.		SHEET NO.		
DRAFT WHERE APPLICABLE MUST REMAIN WITHIN DIMENSIONS			SIZE A3		475531001		SD-47553-101		1 OF 1	
THIS DRAWING CONTAINS INFORMATION THAT IS PROPRIETARY TO MOLEX INCORPORATED AND SHOULD NOT BE USED WITHOUT WRITTEN PERMISSION										