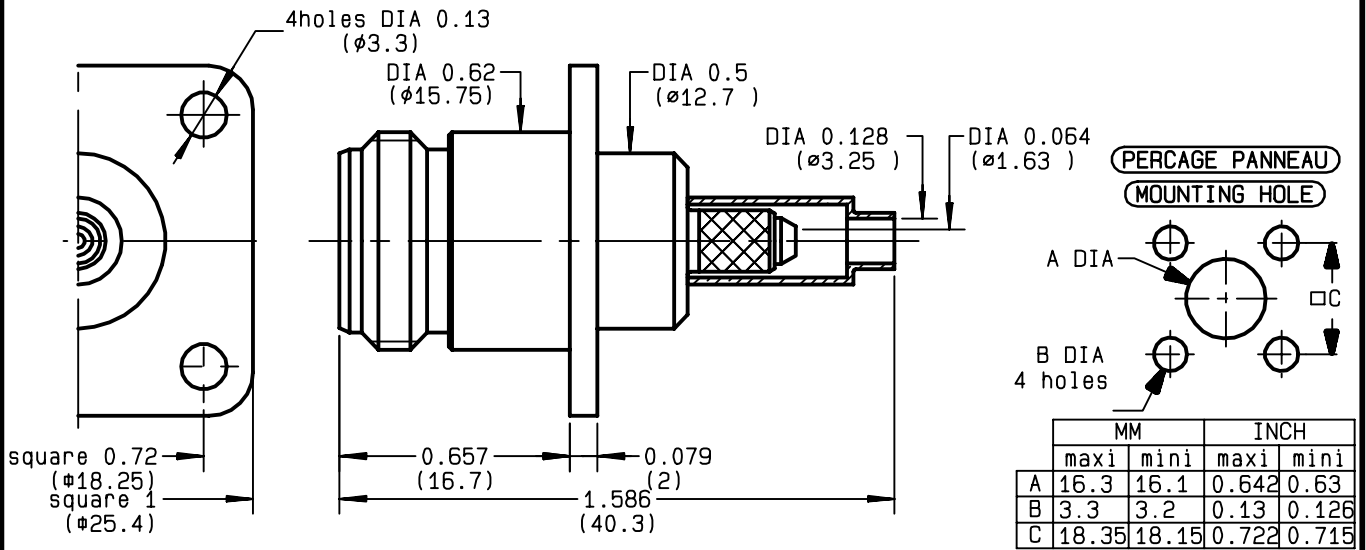


**STRAIGHT SQUARE FLANGE JACK**  
**FULL CRIMP-TYPE - CABLE 2.6/50 S+D**

**R161.281.300**  
**SERIES N**



NOMINAL IMPEDANCE	<b>50</b> Ω
FREQUENCY RANGE	<b>0-11</b> GHz
TEMPERATURE RATING	<b>-55/+155</b> °C
V.S.W.R	<b>1.20*</b> + x F(GHz)Maxi
RF INSERTION LOSS	<b>0.048</b> √F(GHz) dB Maxi
VOLTAGE RATING	<b>250</b> Veff Maxi
DIELECTRIC WITHSTANDING VOLTAGE	<b>750</b> Veff Mini
INSULATION RESISTANCE	<b>5000</b> MΩMini
HERMETIC SEAL	<b>NA</b> Atm.cm <sup>3</sup> /s
LEAKAGE (pressurized only)	<b>NA</b>
MECHANICAL DURABILITY	<b>500</b> Cycles
WEIGHT	<b>36.5</b> gr
SPECIFICATION	<b>* 0-3 GHz</b>

CABLES :	<b>K02252D</b>
	<b>KX 22A</b>
	<b>RD 316</b>
	<b>RG 188</b>
	<b>RG 316</b>
OTHERS CHARACTERISTICS	
CABLE RETENTION	<b>40</b> N Mini
CENTER CONTACT RETENTION	
Axial force - mating end	<b>68</b> N Mini
Axial force - opposite end	<b>68</b> N Mini
Torque	<b>NA</b> cm.N Mini
RECOMMENDED TORQUES	
Mating	<b>NA</b> cm.N
Panel nut	<b>NA</b> cm.N
Clamp nut	<b>NA</b> cm.N

CONNECTOR PARTS:	MATERIALS	FINISH	(all values are given in micrometers)
BODY	BRASS	BBR 2	
OUTER CONTACT	BRASS	BBR 2	
CENTER CONTACT	BERYLLIUM COPPER	GOLD 0.5 OVER NICKEL 2	
INSULATOR	PTFE	-	
GASKET	-	-	
OTHERS PIECES	BRASS	BBR 2	

ISSUE	CREATION DATE	FILE PART-NUMBER
<b>9827B00</b>	<b>09/04/1997</b>	<b>EPC 96-07</b>



QUERIN

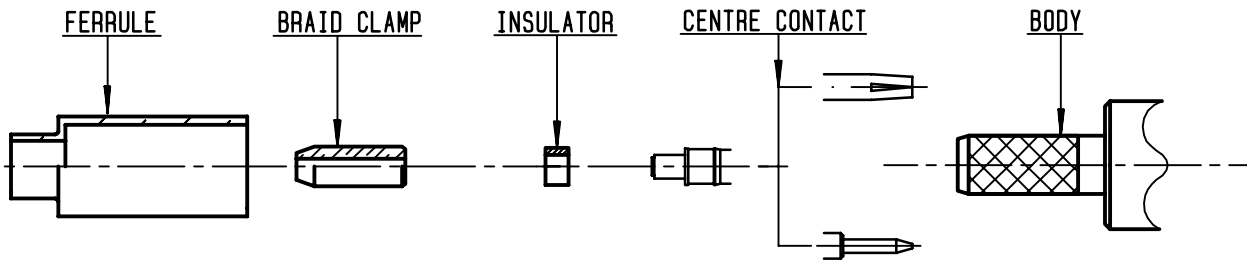
The information given here is subject to change without notice. Design changes may be in order to improve the product.

Connect to the future



**R161.281.300**

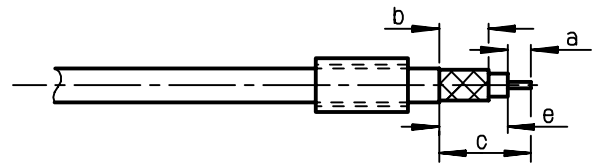
ISSUE 9827B00 SERIES N



①

Slide onto the cable the ferrule  
Strip the cable .

-  
-



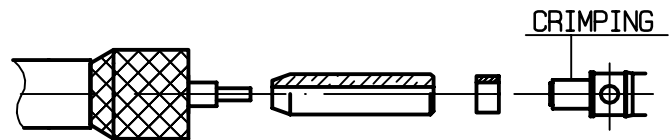
Stripping	a	b	c	d	e
inch	0.118	0.256	0.472	0	0.354
mm	3	6.5	12		9

②

Fan the braid .  
Slide the braid clamp and insulator  
between the dielectrique and the braid .  
Slide on centre contact until it  
bottoms against cable dielectrique .

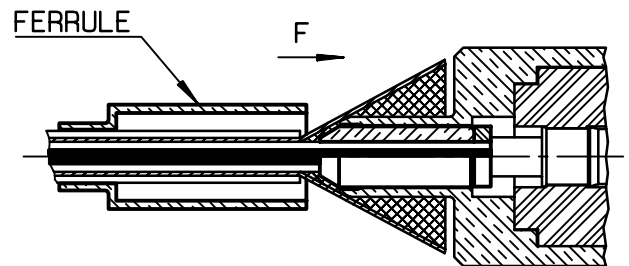
Crimp centre contact .

Crimping tool : R282 223 000 ( Hex. : 0.068 )  
or crimping tool R282 293 000 ( M22520/5-01 )  
+ dies R282 235 011 ( M22520/5-11 )



③

Slide cable dielectric into the body  
while gently grinding the braid over the knurl  
Push until the dielectric clicks into  
position .  
Slide ferrule over braid in direction F .



④

Crimp the ferrule with crimping tool  
R 282 223 000 ( Hex. : 0.213 ) or  
crimping tool R282 293 000 ( M22520/5-01 )  
+ dies R282 235 011 ( M22520/5-11 )  
Cut the excess of braid .

-  
-

