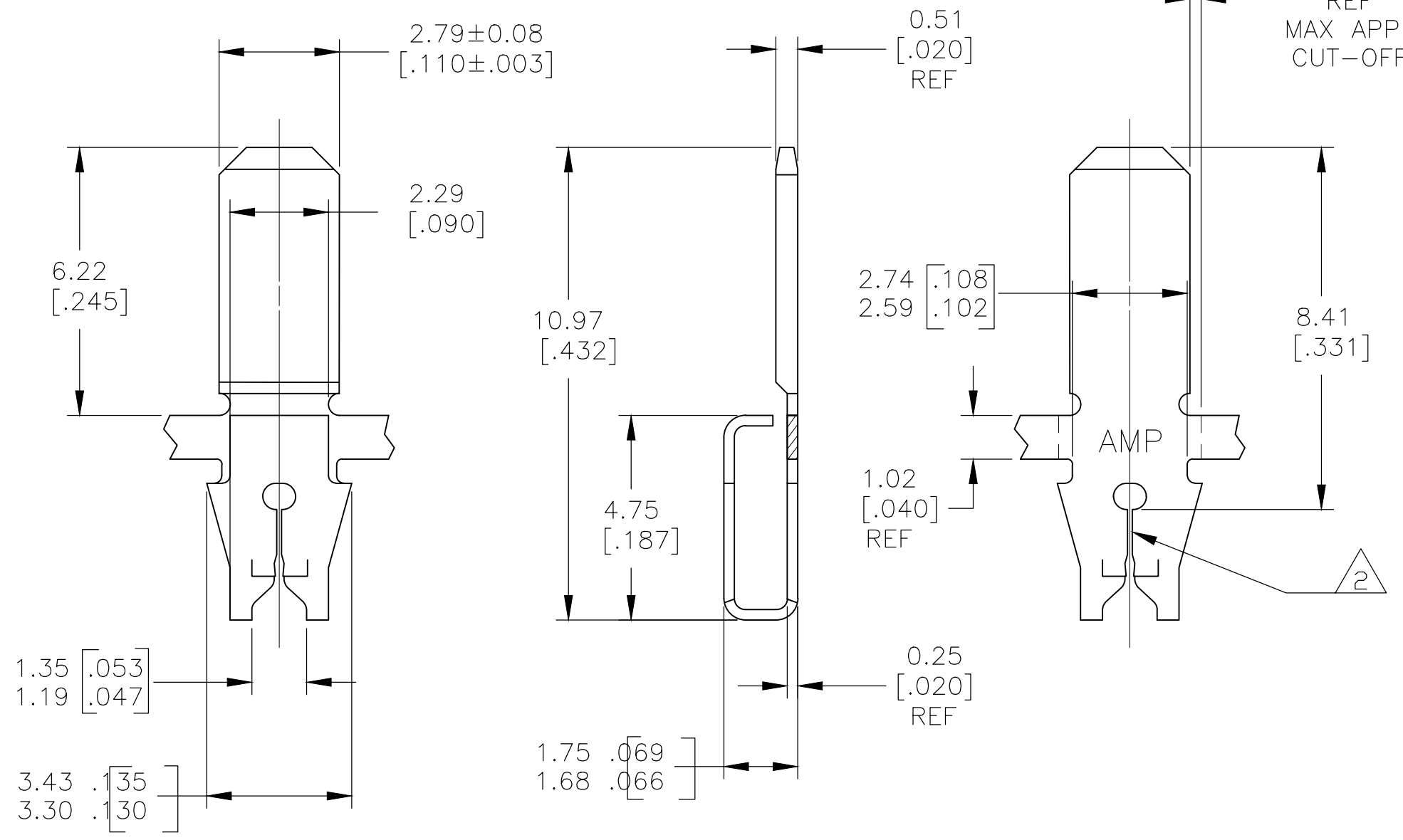


THIS DRAWING IS UNPUBLISHED. RELEASED FOR PUBLICATION  
 © COPYRIGHT - By - ALL RIGHTS RESERVED.

REVISIONS				
P	LTR	DESCRIPTION	DATE	APVD
	A	REVISED PER ECR-18-014190	11SEP2018	BDA KR



- 1 CONTINUOUS STRIP ON REELS AT 5.08±0.08 [.200±.003] CENTERS.
- 2 SLOTTED ACCEPTS A SINGLE OR DOUBLE WIRE OF SAME SIZE AND TYPE.  
 COPPER MAGNET WIRE:  
 DIA 0.23-0.32mm [#31-#28] AWG  
 ALUMINUM MAGNET WIRE:  
 DIA 0.29-0.36mm [#29-#27] AWG



2238089-1  
 PART NO.

THIS DRAWING IS A CONTROLLED DOCUMENT.		DWN B WAYNE 25FEB2015	<b>STE</b> TE Connectivity	
DIMENSIONS: MM [ INCHES ]		CHK KURT RANDOLPH 25FEB15		
TOLERANCES UNLESS OTHERWISE SPECIFIED:		APVD KURT RANDOLPH 25FEB15	NAME	
0 PLC ± -		PRODUCT SPEC	TAB, FASTON, .110 SERIES	
1 PLC ± -		108-2012	187 SERIES MAG-MATE	
2 PLC ± 0.25 [.010]		APPLICATION SPEC	SIZE	CAGE CODE
3 PLC ± -		114-2069	A3	00779
4 PLC ± -		WEIGHT	DRAWING NO	RESTRICTED TO
ANGLES ± -		-	C-2238089	-
MATERIAL	FINISH	CUSTOMER DRAWING		
BRASS	TIN	SCALE	SHEET	REV
		8:1	1 OF 1	A