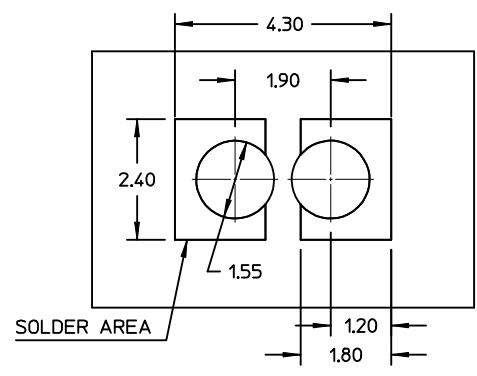


PROPOSED P.C.BOARD LAYOUT



MTL NO	PACKAGING
94125-5102	TAPE & REEL
94125-6102	LOOSE IN BOX

MATERIALS:

TERMINAL - PhBz CuSn8 (C 521)
 TIN PRE-PLATED STOCK (0.15 mm THICK)
 HOUSING-LCP 30% G.F. V0 BLACK COLOR

NOTES:

PCB THICKNESS 0.6-1.2 mm
 PIN ROUND OR SQUARE,
 DIAMETRAL/DIAGONAL DIM 0.40-0.60 mm
 PIN LENGTH - 2.8 mm MIN WITH
 PCB THICKNESS 1.2 mm.
 COPLANARITY OF THE SOLDER TAILS - 0.1 mm
 PACKAGING - SEE SHEET NO. 2/2
 PRODUCT CHARACTERISTICS - ACCORDING TO
 PS-94125-001

Std. Descr.: *MIC SOCKET SMT 1.9 PITCH 2 CKT*

EC NO: Z2003-0023 DRWN: GZUIN 2002/08/19 CHKD: MTESTAGU002/09/04 APPR: RMARTUCC002/09/04	QUALITY SYMBOLS	GENERAL TOLERANCES (UNLESS SPECIFIED)	SCALE 10:1	DESIGN UNITS METRIC	FIRST ANGLE PROJECTION	REVISE ON CAD ONLY															
	-0 C-0	<table border="1"> <thead> <tr> <th></th> <th>mm</th> <th>INCH</th> </tr> </thead> <tbody> <tr> <td>4 PLACES</td> <td>± ---</td> <td>± ---</td> </tr> <tr> <td>3 PLACES</td> <td>± ---</td> <td>± ---</td> </tr> <tr> <td>2 PLACES</td> <td>± 0.05</td> <td>± ---</td> </tr> <tr> <td>1 PLACE</td> <td>± 0.10</td> <td>± ---</td> </tr> </tbody> </table>		mm	INCH	4 PLACES	± ---	± ---	3 PLACES	± ---	± ---	2 PLACES	± 0.05	± ---	1 PLACE	± 0.10	± ---	DIMENSION STYLE MM ONLY	TITLE SMT BOTTOM ENTRY SOCKET 2 CKT - 1.9 PITCH		
			mm	INCH																	
	4 PLACES	± ---	± ---																		
3 PLACES	± ---	± ---																			
2 PLACES	± 0.05	± ---																			
1 PLACE	± 0.10	± ---																			
DESCRIPTION	ANGULAR ± 2 °	DRAWN BY DATE GZUIN 1999/03/15	MOLEX INCORPORATED																		
REV	DRAFT WHERE APPLICABLE MUST REMAIN WITHIN DIMENSIONS	CHECKED BY DATE MTESTAGU 1999/03/15	APPROVED BY DATE RMARTUCC 1999/03/15	MATERIAL NO. SEE TAB	DOCUMENT NO. SD-94125-005	SHEET NO. 1 OF 2															

10 9 8 7 6 5 4 3 2 1

F

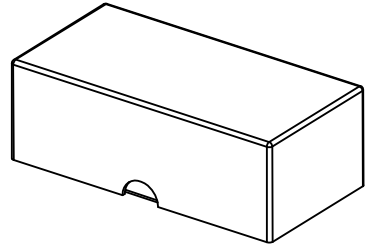
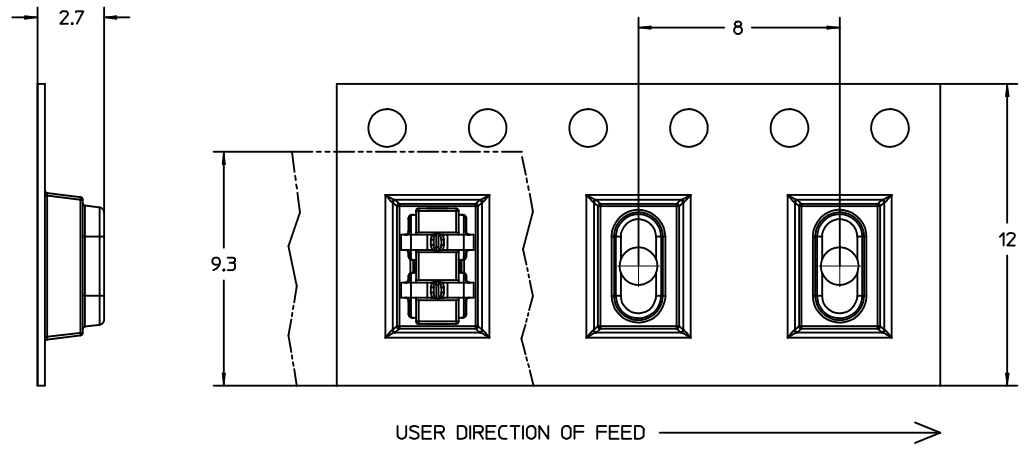
E

D

C

B

A



PACKAGING CONFIGURATION
TAPE & REEL PER EIA 481

EMBOSSED CARRIER 12 mm
(BLACK CONDUCTIVE POLYCARBONATE)
COVER TAPE 9.1 mm
(ANTI-STATIC POLYESTER FILM)
REEL DIA 330 mm (13")
(NOT CONDUCTIVE POLYSTYRENE)
EXTERNAL BOX DIM = 360X360X200
N. OF PCS/REEL = 3K
N. OF REEL/BOX = 8
N. OF PCS/BOX = 24K
S.P.Q. = 24K PCS

MTL NO	PACKAGING
94125-5102	TAPE & REEL
94125-6102	LOOSE IN BOX

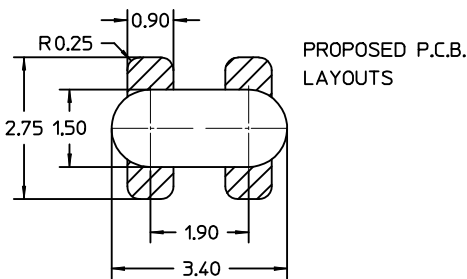
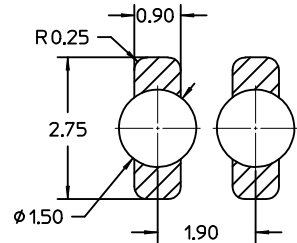
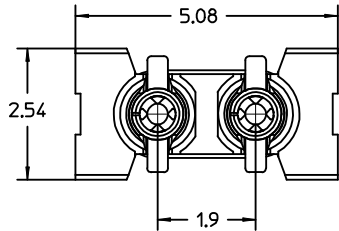
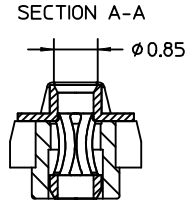
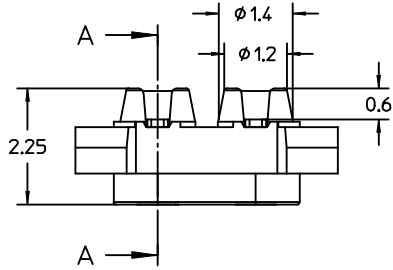
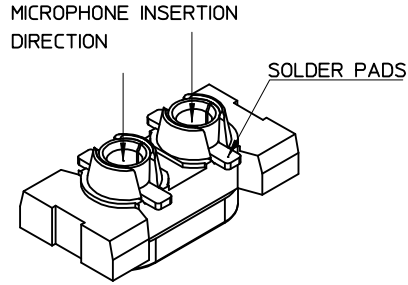
PACKAGING CONFIGURATION
LOOSE IN BOX

NOTES:
POLYESTER BAG
DIM = 130X170+20 mm
PRIMARY CARTON BOX
DIM = 175X83X54 mm
SHIPPING CARTON UNIT
DIM = 184X184X184 mm
N° OF PCS/BAG = 3 K
N° OF BAGS/BOX = 4
N° OF PCS/BOX = 12 K
S.P.Q. = 12 K

EC NO: Z2003-0023 DRWN: GZUIN 2002/08/19 CHKD: MTESTAG 2002/09/04 APPR: RMARTUCC 2002/09/04	QUALITY SYMBOLS ▽ -0 ▽ -0	GENERAL TOLERANCES (UNLESS SPECIFIED)		SCALE 1:1	DESIGN UNITS METRIC	FIRST ANGLE PROJECTION	REVISE ON CAD ONLY		
			mm	INCH	DIMENSION STYLE MM ONLY		TITLE SMT BOTTOM ENTRY SOCKET 2 CKT - 1.9 PITCH		
		4 PLACES	± ---	± ---	DRAWN BY GZUIN	DATE 1999/03/15	MOLEX INCORPORATED MATERIAL NO. SEE TAB DOCUMENT NO. SD-94125-005 SHEET NO. 2 OF 2		
		3 PLACES	± ---	± ---	CHECKED BY MTESTAGU	DATE 1999/03/15			
2 PLACES	± ---	± ---	DRAFT WHERE APPLICABLE		THIS DRAWING CONTAINS INFORMATION THAT IS PROPRIETARY TO MOLEX INCORPORATED AND SHOULD NOT BE USED WITHOUT WRITTEN PERMISSION				
1 PLACE	± ---	± ---	MUST REMAIN WITHIN DIMENSIONS		A3				

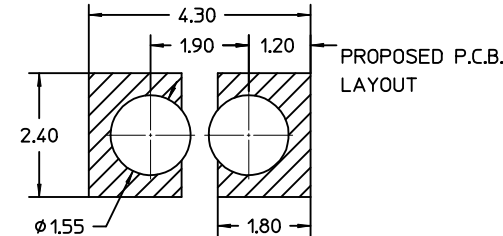
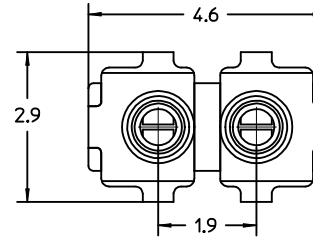
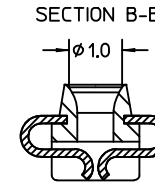
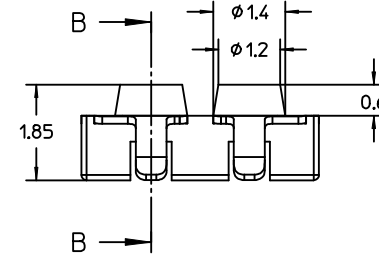
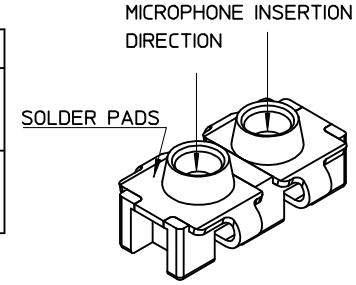
9 8 7 6 5 4 3 2 1

MTL. NO.	PACKAGING
94123-1002	TAPE & REEL
94123-6002	LOOSE IN BOX



NOTES:
 PIN DIA 0.45±0.01 mm
 PCB THICKNESS 0.8/1.2 mm
 COPLANARITY OF THE SOLDER TAILS 0.1 mm
 PRODUCT CHARACTERISTICS ACCORDING TO:
 DWG NO. SD-94123-003
 PROD. SPEC. NO. PS-94123-007

MTL. NO.	PACKAGING
94125-5102	TAPE & REEL
94125-6102	LOOSE IN BOX



NOTES:
 PIN ROUND OR SQUARE,
 DIAMETRAL/DIAGONAL DIM 0.40-0.60 mm
 PIN LENGTH 2.8 mm MIN
 PCB THICKNESS 0.6-1.2 mm
 COPLANARITY OF THE SOLDER TAILS 0.1 mm
 PRODUCT CHARACTERISTICS ACCORDING TO:
 DWG NO. SD-94125-005
 PROD. SPEC. NO. PS-94125-001

Std. Descr.: "MIC SOCKET SMT 1.9 PITCH 2 CKT"

EC NO. Z2000-0128 DRWN: G. ZUIN 01/02/00 CHK: M. TESTAGUZZA 01/02/00 APPR: R. MARTUCCI 01/02/00	QUALITY SYMBOLS MAJOR M SIGNIF. S CRITICAL C	GENERAL TOLERANCES: (UNLESS SPECIFIED) mm inch 4 PLACES ±0. ±. 3 PLACES ±0. ±. 2 PLACES ±0. ±. 1 PLACE ±0. ±. ANGULAR: ± °	SCALE 10:1 DESIGN BY & DATE G. ZUIN 21/09/99 CHECKED BY & DATE M. TESTAGUZZA 21/09/99 APPROVED BY & DATE R. MARTUCCI 21/09/99 CAD FILENAME SD-94125-020	DIMENSIONS: <input type="checkbox"/> mm <input type="checkbox"/> INCH <input checked="" type="checkbox"/> mm ONLY <input type="checkbox"/> INCH <input type="checkbox"/> mm	SHT REV REVISE ON CAD ONLY	
	DESCRIPTION 2	TITLE: MICROPHONE SOCKET SMT 1.9 mm PITCH 2 CKT (DRAWING FOR MOTOROLA)	MOLEX INCORPORATED	MATERIAL NO. SEE TABLES	DRAWING NO. SD-94125-011	SHEET NO. 1/1
	DRAFT WHERE APPLICABLE MUST REMAIN WITHIN DIMENSIONS	THIS DRAWING CONTAINS INFORMATION THAT IS PROPRIETARY TO MOLEX INCORPORATED AND SHOULD NOT BE USED WITHOUT WRITTEN PERMISSION.	SIZE A3			