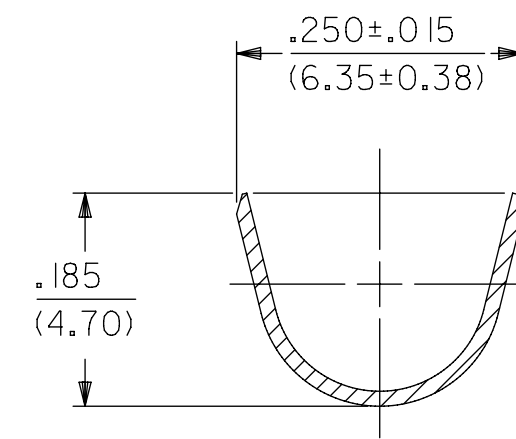
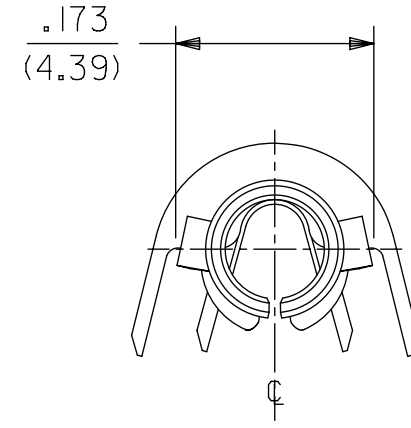
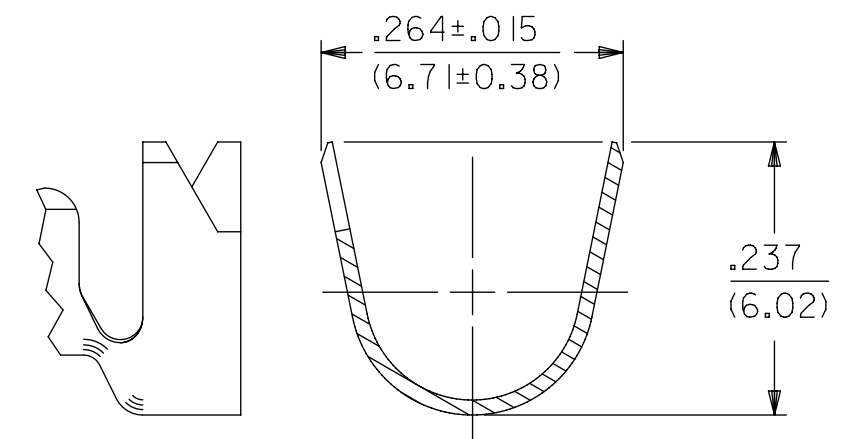


| PART NO. | ENG. NO. |
|------------|--------------|
| 02-09-1153 | 41483-(P901) |
| 02-09-1155 | 41483-(P901) |
| | |
| | |



SECT. "A-A"
FOR CRIMP STYLE "A"



SECT. "A-A"
FOR CRIMP STYLE "B"

ENG. NO. LEGEND

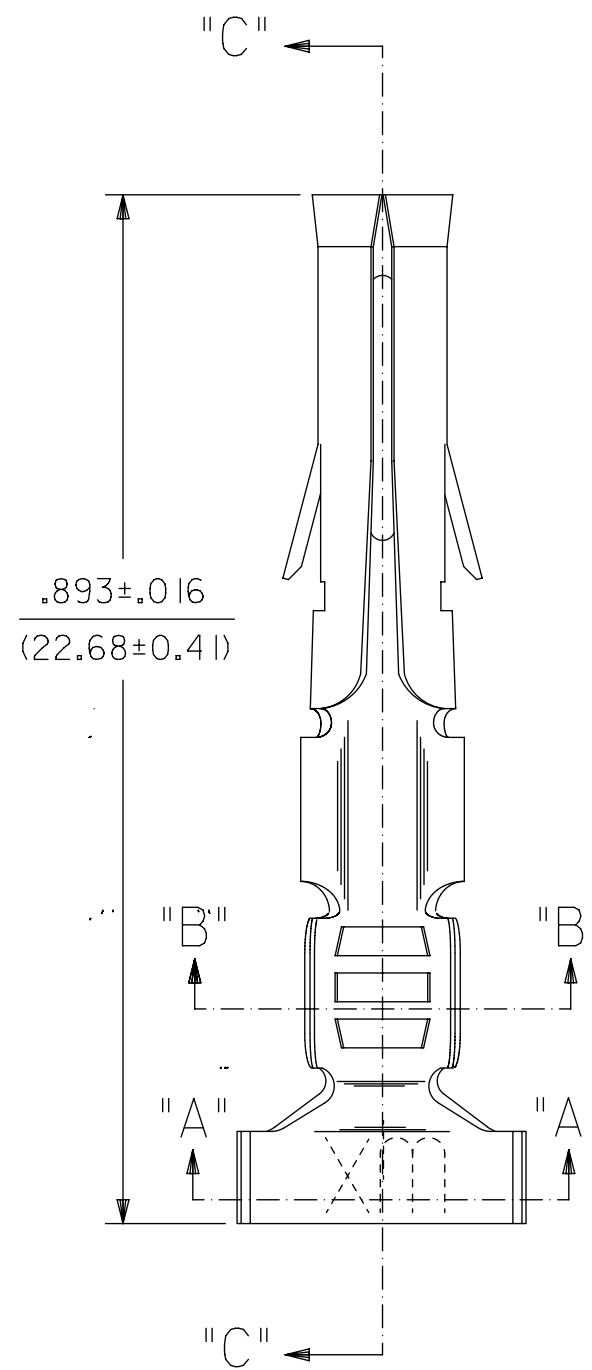
41483-*(****)*

CRIMP STYLE: BLANK=STYLE "A", I=STYLE "B"

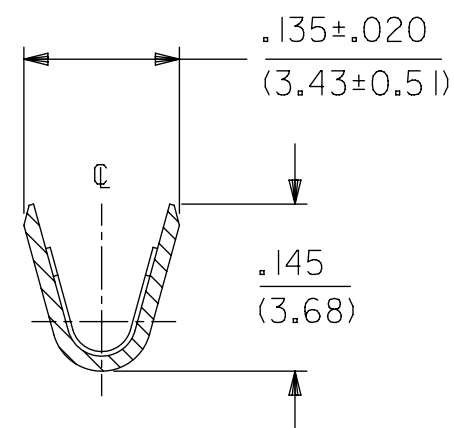
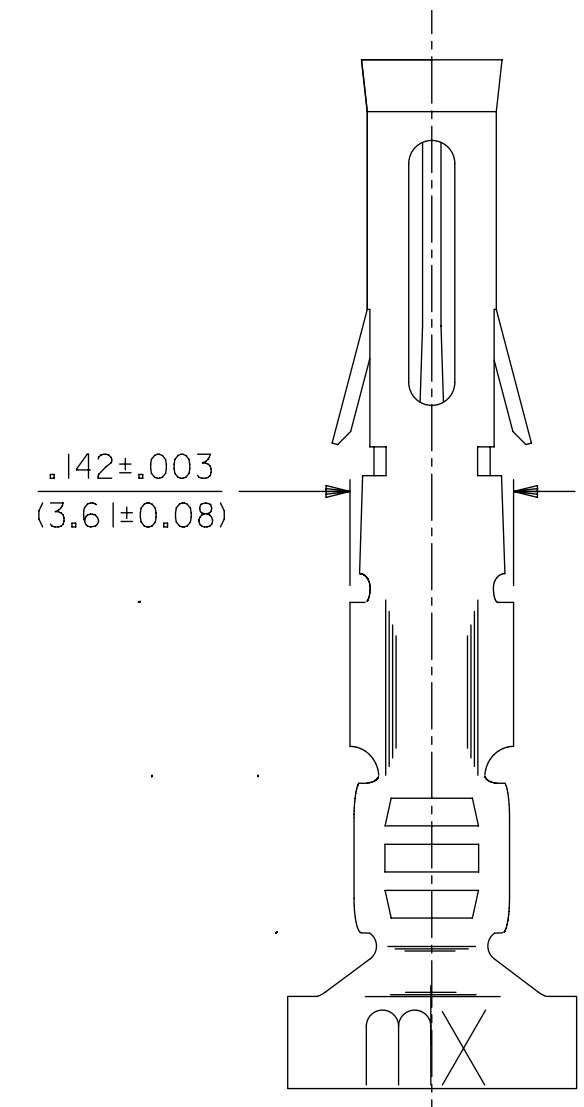
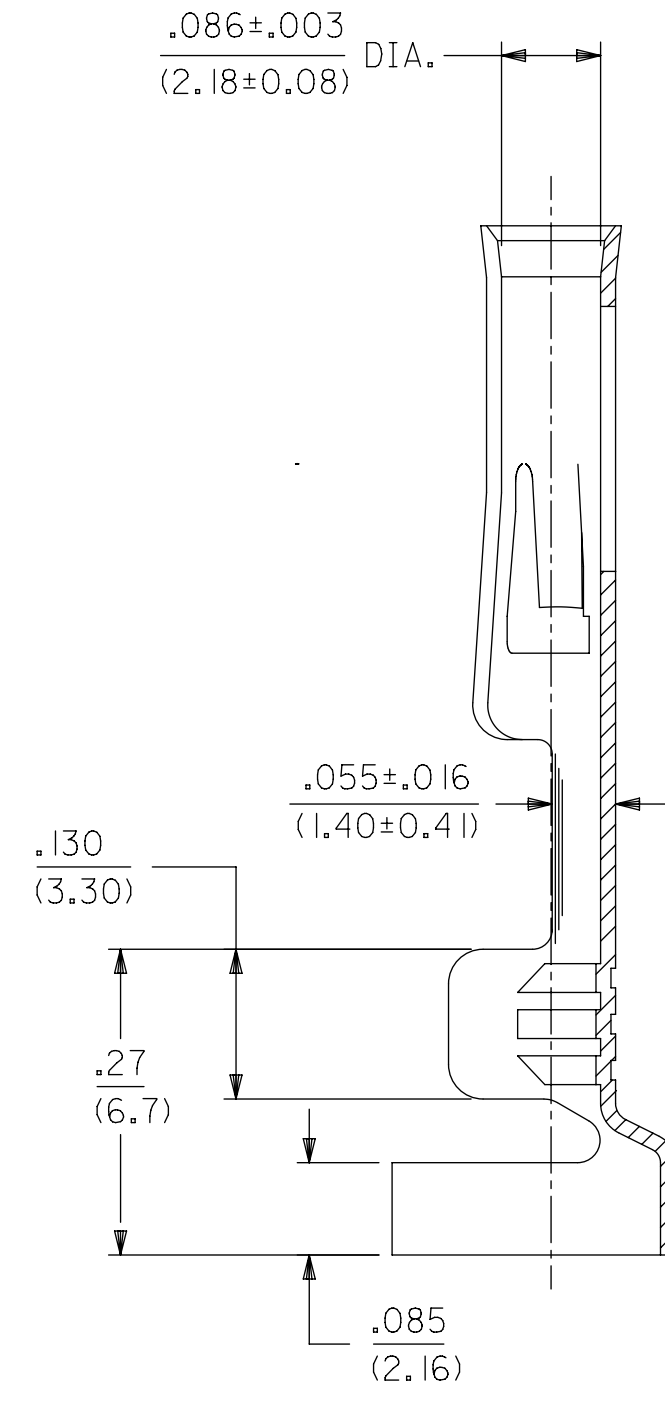
FORM: BLANK=CHAIN, L=LOOSE

FINISH CODE (SEE NOTE 2): P=PREPLATED FINISH, BLANK=POSTPLATED FINISH

- NOTES:
- MATERIAL: BRASS
 - FINISH: SEE LEGEND
901 HOT TIN DIP .000020/(0.00051) MIN.
 - THIS PART CONFORMS TO PROD. SPEC. PSX-41483.
 - TERMINAL FOR USE WITH .093/(2.36) SERIES HOUSINGS AND WILL ACCEPT 14 THRU 18 AWG WIRE.
CRIMP STYLE "A" ACCEPTS .180/(4.57) MAX. INSULATION DIA. OR 18 AWG SPT-3 CORD WHEN INSULATION IS CUT OR MANUFACTURED WITHIN THIS DIAMETER. FOR SPT-3 WIRE, IT IS RECOMMENDED THE WIRE BE ORIENTED SO THAT THE INSULATION RADIUS IS FACING THE TOP OF THE CRIMP AFTER CRIMPING.
CRIMP STYLE "B" INTENDED FOR DOUBLE CRIMPING OF TWO 18 AWG WIRES; ONE HAVING A MAXIMUM INSULATION DIA. OF .170/(4.32) & ONE HAVING A MAX. INSULATION DIA. OF .110/(2.79).

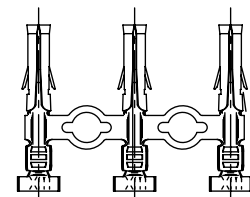


SECT. "C-C"



SECT. "B-B"

CHAIN FORM
FULL SCALE



| THIS DRAWING CONTAINS INFORMATION THAT IS PROPRIETARY TO MOLEX ELECTRONIC TECHNOLOGIES, LLC AND SHOULD NOT BE USED WITHOUT WRITTEN PERMISSION | | | | | | | | | | |
|---|-------|--|------|------------------------|-------------------|--|--|--|--|------------|
| SYMBOLS | | DIMENSION UNITS | | SCALE | | CURRENT REV DESC: ADD/REMOVE PART #S | | | | |
| ∇ = 0 | ∇ = 0 | IN/MM | | 6:1 | | molex CRIMP TERMINAL, FEMALE .093 DIA. FOR 14-18 AWG WIRE, CLOSED SLOT VERSION PRODUCT CUSTOMER DRAWING | | | | |
| ∇ = 0 | ∇ = 0 | GENERAL TOLERANCES (UNLESS SPECIFIED) | | | | | | | | |
| ∇ = 0 | ∇ = 0 | MM | INCH | EC NO: 609663 | 2018/12/26 | | | | | |
| ∇ = 0 | ∇ = 0 | 4 PLACES | ± | ± | DRWN: SALHAMY | 2019/01/15 | DOCUMENT NUMBER: SD-41483-X DOC TYPE: PSD DOC PART: 001 REVISION: J1 | | | |
| ∇ = 0 | ∇ = 0 | 3 PLACES | ± | ± 0.01 | CHK'D: MKIPPER | 2019/01/17 | | | | |
| ∇ = 0 | ∇ = 0 | 2 PLACES | ± | ± 0.014 | APPR: FSMITH | 2019/01/17 | | | | |
| ∇ = 0 | ∇ = 0 | 1 PLACE | ± | ± 0.36 | INITIAL REVISION: | MATERIAL NUMBER: SEE CHART CUSTOMER: GENERAL MARKET SHEET NUMBER: 1 OF 1 | | | | |
| ∇ = 0 | ∇ = 0 | 0 PLACES | ± | ± | DRWN: GC | | | | | 1990/05/12 |
| ∇ = 0 | ∇ = 0 | ANGULAR TOL | ± | ± 0.5° | APPR: GWF | | | | | 1990/05/12 |
| ∇ = 0 | ∇ = 0 | DRAFT WHERE APPLICABLE MUST REMAIN WITHIN DIMENSIONS | | THIRD ANGLE PROJECTION | | DRAWING: C-SIZE | SERIES: 41483 | | | |