

PART NUMBER	REV	FIRST USED	POWER UNIT	FEED TYPE
1855653-1	B	122500-1	LEADMAKER/BENCH MODEL G (1-5/8")	AIRFEED
1855653-2	B	565435-5	BENCH MODEL K (1-1/8")	AIRFEED
1855653-3	B	KOMAX	KOMAX (1-5/8")	AIRFEED

TERMINAL NAME: .187 ULTRA-POD FASTON RECEPTACLE					
AMP TERMINAL - AMP CRIMP SPECS					
521293	-				
521586	-				
521995	-	PAD LTR	CRIMP HEIGHT	WIRE SIZE	
-	-	A3	.071±.002	14	
-	-	B2	.066±.002	(2)18	
-	-	C0	.062±.002	16	
-	-	C5	.059±.002	(2)20	
-	-	D1	.057±.002	18	
		CRIMP	SIZE	TYPE	RANGE
-	-	WIRE	.110	F	18-14
-	-	INSUL	.190	F	∅.090-.130 OR (2) .105 MAX

WIRE STRIP LENGTH	TERM APPL SPEC	FEED	APPL INSTRUCTIONS	SET UP GAGE	LAYOUT
.156-.172	114-2124	.770	A1 408-8095 & 8098	-	-

**\*WARNING:** ON INSTALLATION, SET WIRE DISC TO LARGEST WIRE SIZE SETTING. USE OF SETTINGS BELOW MIN REQUIRED CRIMP HEIGHT SETTING WILL CAUSE DAMAGE TO CRIMP TOOLING

- △ RECOMMENDED SPARE PARTS.
- △ ITEM NOT SHOWN. (SEE A.1. SHEET 8095)
- △ CUTTING TOLERANCE ±.25
- 4. SPRING LOADED TONKER (P/N 354853-1) MUST BE USED WHEN RUNNING THE APPLICATOR ON A CLS.
- △ CAN NOT RUN (2) 18 AWG OR (2) 20 WIRE ON CLS.

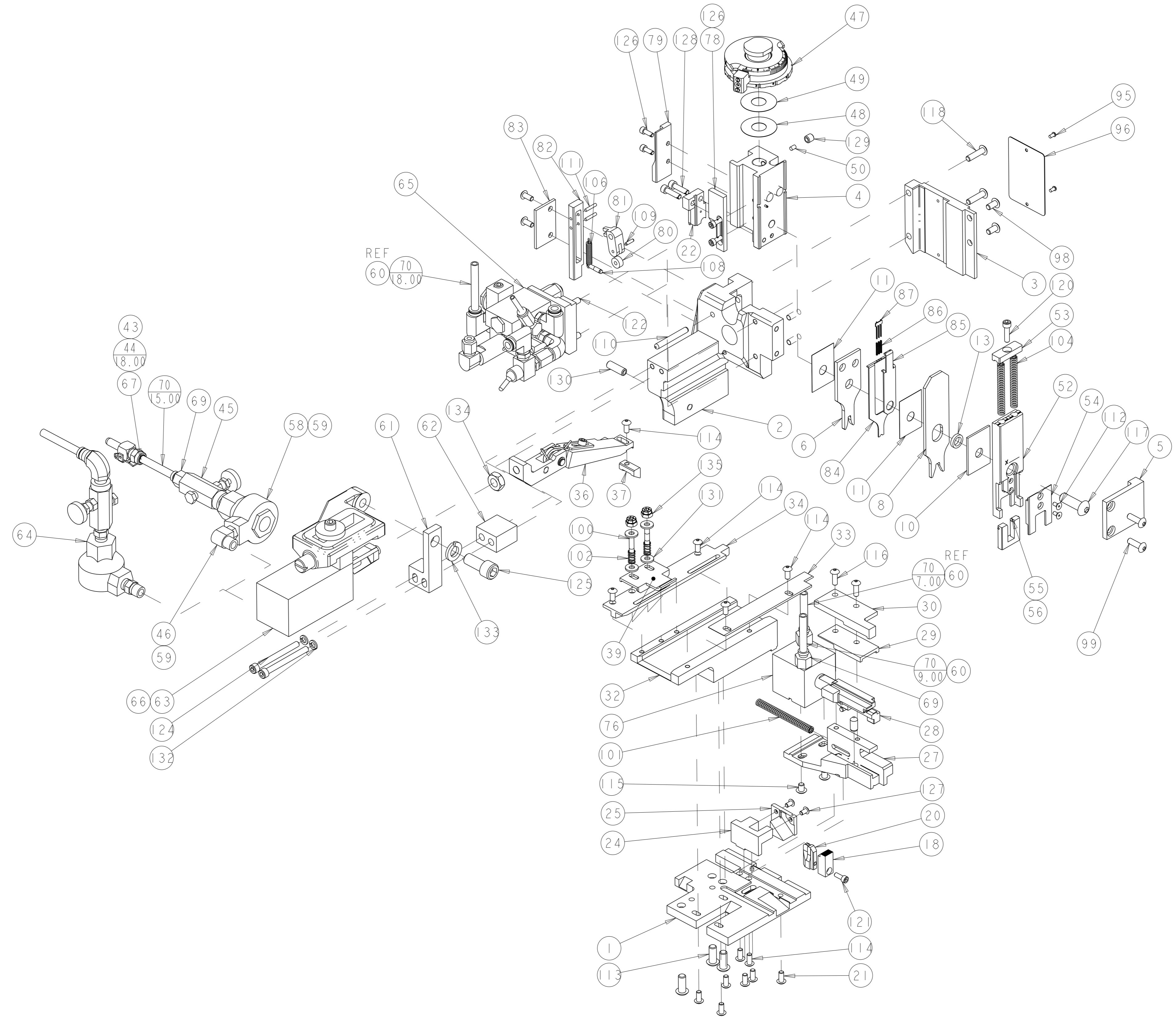
2	2	2	-	21021-3	NUT, HEX, SELF-LOCKING, 8-32	135
1	1	1	-	1-21018-6	NUT, HEX, REG 5/16-24	134
1	1	1	-	21024-8	WASHER, SPRG LOCK, REG 3/8	133
2	2	2	-	21024-5	WASHER, SPRG LOCK, REG NO 10	132
4	4	4	-	1-21899-3	WASHER, FLAT	131
1	1	1	-	21009-8	SCR, SET, SELF LOCKING 1/4-20 X .250	130
1	1	1	-	21009-2	SCR, SET, SELF LOCKING 1/4-20 X .250	129
2	2	2	-	1-23030-1	SCR, SKT HD CAP, S-LOCK, 8-32 X .625	128
2	2	2	-	22733-3	SCR, BHSC, SELF-LOCKING, 6-32 X .250	127
4	4	4	-	23030-2	SCR, SKT HD CAP, S-LOCK, 6-32 X .375	126
1	1	1	-	3-21001-4	SCR, SKT HD CAP 3/8-16 X .875	125
2	2	2	-	4-21000-3	SCR, SKT HD CAP 10-32 X 2.000	124
2	2	2	-	3-21000-7	SCR, SKT HD CAP 10-32 X .750	122
-	1	1	-	1-21000-9	SCR, SKT HD CAP 6-32 X .375	121
-	1	1	-	2-21000-8	SCR, SKT HD CAP 8-32 X .625	120
4	2	2	-	2-21002-9	SCR, BTN SKT HD CAP 10-32 X .750	118
1	1	1	-	7-21002-9	SCR, BTN SKT HD CAP 5/16-24 X 1.00	117
2	2	2	-	2-21002-2	SCR, BTN SKT HD CAP 8-32 X .500	116
2	2	2	-	6-21002-1	SCR, BTN SKT HD CAP 10-24 X .250	115
14	14	14	-	2-21002-1	SCR, BTN SKT HD CAP 8-32 X .375	114
3	3	3	-	2-22733-8	SCR, BHSC, SELF-LOCKING, 1/4-20 X .625	113
-	2	2	-	1-21003-3	SCR, FLT SKT HD CAP 4-40 X .250	112
2	2	2	-	852521-1	PIN, MODIFIED DOWEL	111
1	1	1	-	1-21030-7	PIN, DOWEL .1875 X 1.500	110
1	1	1	-	1-21919-1	PIN, DOWEL .0938 X .375	109
1	1	1	-	1-22183-7	PIN, GROOVED, TYPE 67	108
1	1	1	-	2-22286-2	SPRING, EXTENSION	106
-	4	4	-	7-22280-3	SPRING, COMPRESSION	104
2	2	2	-	22280-2	SPRING, COMPRESSION	102
1	1	1	-	1-23470-7	SPRING, COMPRESSION	101
2	2	2	-	22354-6	STUD, THREADED	100
-	2	2	-	2-21002-8	SCR, BTN SKT HD CAP 10-32 X .625	99
-	2	2	-	2-21002-6	SCR, BTN SKT HD CAP 10-32 X .375	98
1	1	1	-	461264-5	PLATE, IDENTIFICATION	96
2	2	2	-	21017-2	SCREW, DRIVE	95
-	-	REF	...	679532-1	INSERT, GUARD	93
-	1	-	-	455755-8	ASSEMBLY, GUARD	92
1	-	-	-	1633303-1	HOLDER, STABILIZER	91
1	-	-	-	3-238009-7	BLOCK, FL CRIMPER SPACER	90
1	-	-	-	1633289-2	STABILIZER	89
1	-	-	-	1-21002-3	SCR, BTN SKT HD CAP 4-40 X .250	88
1	1	1	-	1424350-1	HOLDER, PIN, WIRED	87
3	3	3	-	2-23147-2	SPRING, COMPRESSION	86
1	1	1	-	1490524-2	DEPRESSOR, SPACER	85
1	1	1	-	1490525-2	DEPRESSOR, WIRE	84
1	1	1	-	852287-1	PLATE, RETAINER	83
1	1	1	-	852286-1	LATCH, INSERT	82
1	1	1	-	852284-1	ARM, LATCH	81
1	1	1	-	852281-2	ROLLER	80
1	1	1	-	852245-2	CAM, INSERT	79
1	1	1	-	852246-1	CAM, VALVE	78
1	1	1	-	354993-1	CYLINDER, MODIFIED, .187	76
-	1	-	-	26108-1	BODY, QUICK CONNECT	75

LOC	DIST	REVISIONS			
A	66	#	DATE	BY	APPV
		A	RELEASED	25AUG2011	RK GB
		B	ECR-20-011175	06AUG2020	JWC GB

-	1	-	-	23791-2	TEE, FEMALE BRANCH	74
-	2	-	-	22311-2	NIPPLE	73
-	1	-	-	28580-1	FILTER, MINITURE	72
-	1	-	-	28582-1	LUBRICATOR	71
80	68	68	1N	27319-4	TUBING, POLY-FLO, NATURAL	70
3	2	2	-	980282-3	CONNECTOR MALE	69
-	1	-	-	22307-1	BUSHING, PIPE FITTING	68
2	1	2	-	23238-1	INSERT, COUPLING	67
-	-	1	-	980285-2	ELBOW, MALE SWIVEL 1/8NPT x .25	66
1	1	1	-	354385-4	PNEUM ASSEMBLY	65
-	1	-	-	692655-5	AIR FEED VALVE ASSEMBLY	64
1	1	1	-	852289-1	AIR FEED ASS'Y	63
1	1	1	-	461690-1	SPACER, AIR FEED	62
1	1	1	-	459610-3	MOUNT, FEED BRACKET	61
1	1	1	-	19832-1	TIE WIRE	60
2	-	1	-	22304-1	NIPPLE, HEX, PIPE FITTING	59
1	-	1	-	22374-7	VALVE, QUICK EXHAUST	58
-	1	-	-	1-1338042-1	DEPRESSOR, WIRE	56
-	-	1	-	1-1338042-0	DEPRESSOR, WIRE	55
-	1	1	-	1338045-1	PLATE, DEPRESSOR	54
-	1	1	-	1338043-1	CAP, DEPRESSOR	53
-	1	1	-	1338044-1	DEPRESSOR, WIRE	52
1	1	1	-	690191-1	PLUG, NYLON	50
1	1	1	-	690125-1	SHIM SUB-ASSY	49
1	1	1	-	469367-1	SHIM	48
1	1	1	-	879103-3	FINE ADJUST HEAD SUBASSY	47
1	-	-	-	22306-1	ELBOW, STREET, 90° 1/8 NPT	46
1	-	-	-	23054-1	VALVE, FLOW CONTROL	45
18	-	-	-	27319-8	TUBING, POLY-FLOW .156 O.D.	44
1	-	-	-	1424324-1	AIR LINE KIT, .250 TO 4mm	43
1	1	1	-	852251-2	- DRAG	39
1	1	1	-	853521-1	PAWL, FEED	37
1	1	1	-	461062-6	FEED FINGER ASSEMBLY	36
1	1	1	-	679158-1	GUIDE, REAR STRIP	34
1	1	1	-	679157-1	GUIDE, FRONT STRIP	33
1	1	1	-	1338060-1	PLATE, STRIP GUIDE	32
1	1	1	-	1338955-1	HOLDDOWN, FIXED	30
1	1	1	-	90777-1	GIB, HOUSING	29
1	1	1	-	318197-3	INSERTOR, POD	28
1	1	1	-	90775-1	HOUSING, INSERT SLIDE	27
1	1	1	-	853515-1	SHEAR, RIGHT	25
1	1	1	-	314864-1	SHEAR, LEFT	24
1	1	1	-	853516-1	BLADE, SLUG	22
1	1	1	-	22733-8	SCR, BHSC, SELF-LOCKING, 8-32 X .375	21
1	1	1	-	1-1338056-4	ANVIL, COMBINATION	20
-	1	1	-	1338041-6	SUPPORT, WIRE, LOWER	18
1	1	1	-	238011-4	BLOCK, CRIMPER SPACER	13
2	2	2	-	455888-1	SPACER, CRIMPER	11
1	1	1	-	1-455888-5	SPACER, CRIMPER	10
1	-	-	...	454220-1	CAP, RAM	9
1	1	1	-	3-679440-8	CRIMPER, INSULATION F	8
1	-	-	...	852221-2	HOUSING, APPLICATOR	7
1	1	1	-	6-1490019-7	CRIMPER, WIRE PREMIUM	6
-	1	1	-	1673936-2	RAM CAP PLATE	5
1	1	1	-	856287-3	RAM, 250 STRAIGHT	4
-	1	1	-	1424388-2	CAP, RAM	3
-	1	1	-	1424387-1	HOUSING, APPLICATOR	2
1	1	1	-	1424368-1	PLATE, BASE	1

THIS DRAWING IS A CONTROLLED DOCUMENT.		OWN	R. KNEPPER	25AUG2011
DIMENSIONS:		CHK	G. BAILEY	25AUG2011
IN		APV	M. CLIFFORD	25AUG2011
TOLERANCES UNLESS OTHERWISE SPECIFIED:		NAME		
0 PLC ±		FINE ADJUST .187 STRAIGHT ULTRA-POD APPLICATOR		
1 PLC ±		PRODUCT SPEC		
2 PLC ±		APPLICATION SPEC		
3 PLC ±		SIZE		
4 PLC ±		CAGE CODE		
ANGLES		DRAWING NO		
FINISH		RESTRICTED TO		
MATERIAL		WEIGHT		
		A100779C=1855653		
		CUSTOMER ACCESSIBLE PRODUCTION DRAWING		
		SCALE 1:2 SHEET 1 OF 3 REV B		

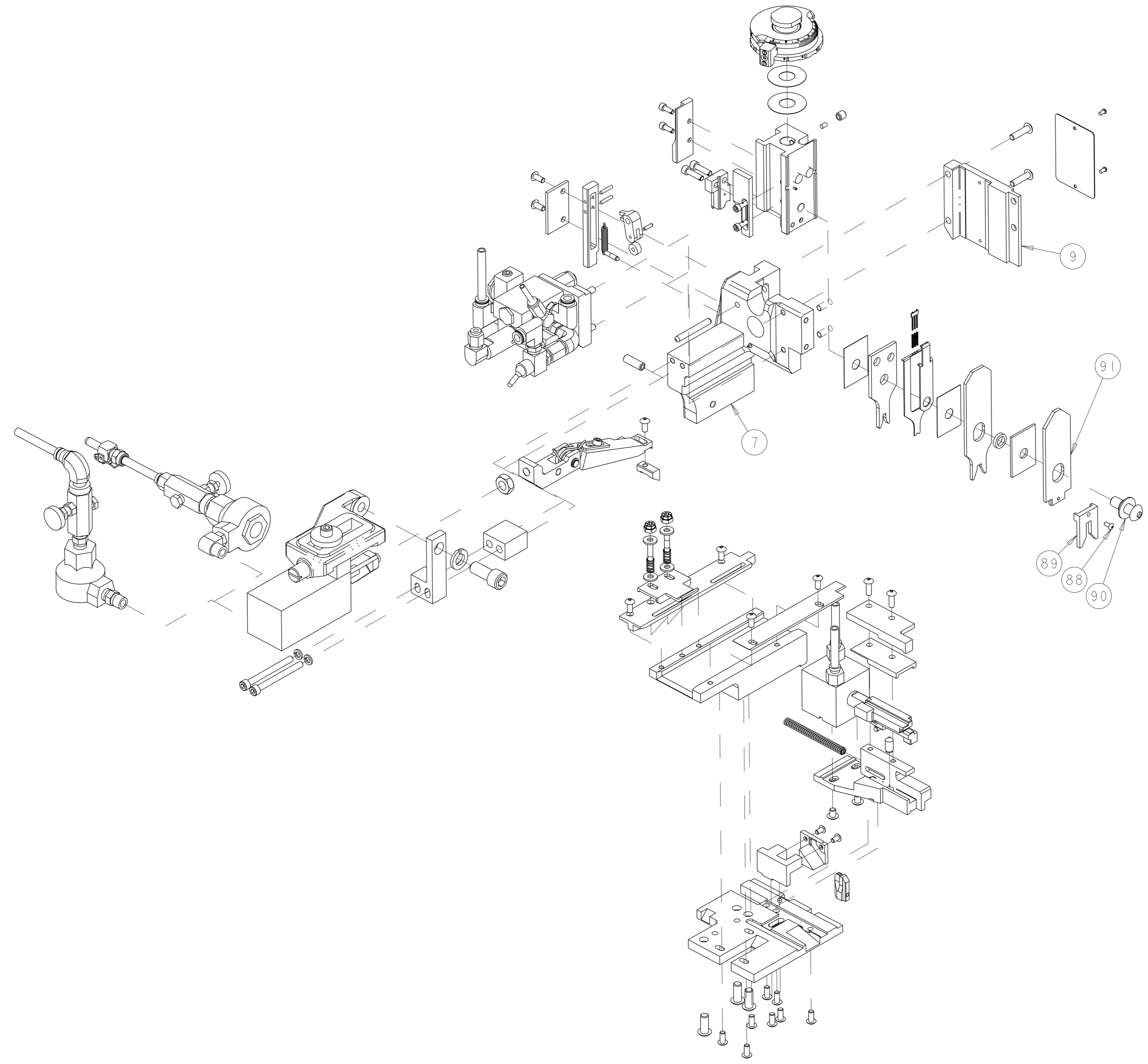
LOC	DIST	REVISIONS			
		REV	DATE	BY	APPV
A	66	-	-	-	-
		SEE SHEET 1			



THIS DRAWING IS A CONTROLLED DOCUMENT.		OWN R. KNEPPER	25AUG2011	TE Connectivity														
DIMENSIONS: IN		CHK G. BAILEY	25AUG2011															
TOLERANCES UNLESS OTHERWISE SPECIFIED:		APVD M. CLIFFORD	25AUG2011	NAME FINE ADJUST .187 STRAIGHT ULTRA-POD APPLICATOR														
<table border="1"> <tr><td>0 PLC</td><td>±</td></tr> <tr><td>1 PLC</td><td>±</td></tr> <tr><td>2 PLC</td><td>±</td></tr> <tr><td>3 PLC</td><td>±</td></tr> <tr><td>4 PLC</td><td>±</td></tr> <tr><td>ANGLES</td><td>±</td></tr> <tr><td>FINISH</td><td>*</td></tr> </table>		0 PLC	±	1 PLC	±	2 PLC	±	3 PLC	±	4 PLC	±	ANGLES	±	FINISH	*	PRODUCT SPEC	APPLICATION SPEC	RESTRICTED TO
0 PLC	±																	
1 PLC	±																	
2 PLC	±																	
3 PLC	±																	
4 PLC	±																	
ANGLES	±																	
FINISH	*																	
MATERIAL		WEIGHT	SIZE A100779	CAGE CODE 1855653														
CUSTOMER ACCESSIBLE PRODUCTION DRAWING		SCALE 1:2	SHEET 2	OF 3														
			REV B															

THIS DRAWING IS UNPUBLISHED. RELEASED FOR PUBLICATION 2007  
 © COPYRIGHT 2007 BY - ALL RIGHTS RESERVED.

LOC		DIST		REVISIONS			
A	66	P	LYR	DESCRIPTION	DATE	OWN	APVD
		-		SEE SHEET 1	-	-	-



# -3 ASSEMBLY ONLY

THIS DRAWING IS A CONTROLLED DOCUMENT.		OWN R. KNEPPER	25AUG2011	TE Connectivity
DIMENSIONS: IN		CHK G. BAILEY	25AUG2011	
TOLERANCES UNLESS OTHERWISE SPECIFIED:		APVD M. CLIFFORD	25AUG2011	NAME FINE ADJUST .187 STRAIGHT ULTRA-POD APPLICATOR
0 PLC ± 1 PLC ± 2 PLC ± 3 PLC ± 4 PLC ± ANGLES ±* FINISH -		PRODUCT SPEC	APPLICATION SPEC	RESTRICTED TO
MATERIAL		WEIGHT	SIZE A100779	CAGE CODE C=1855653
CUSTOMER ACCESSIBLE PRODUCTION DRAWING		SCALE	1:2	SHEET 3 OF 3 REV B