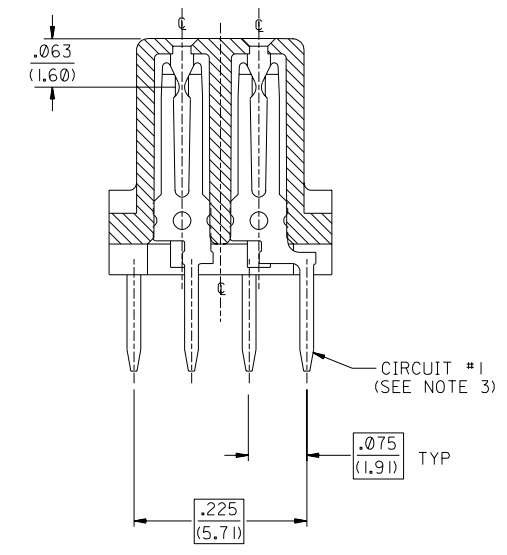
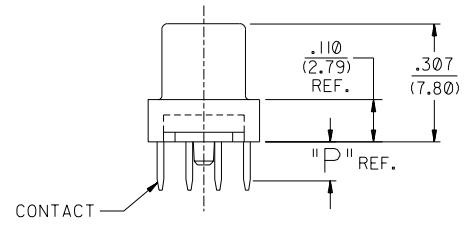
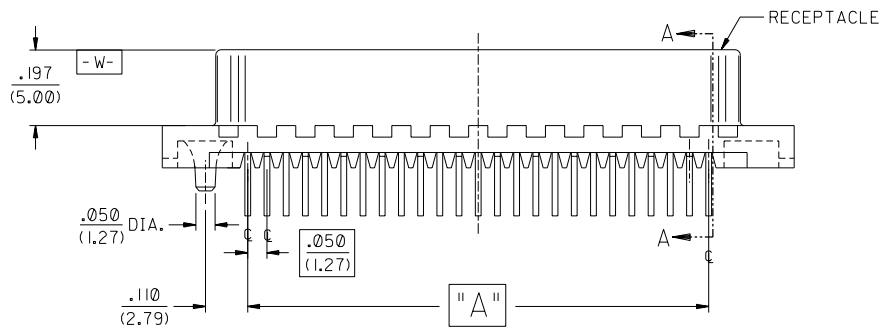
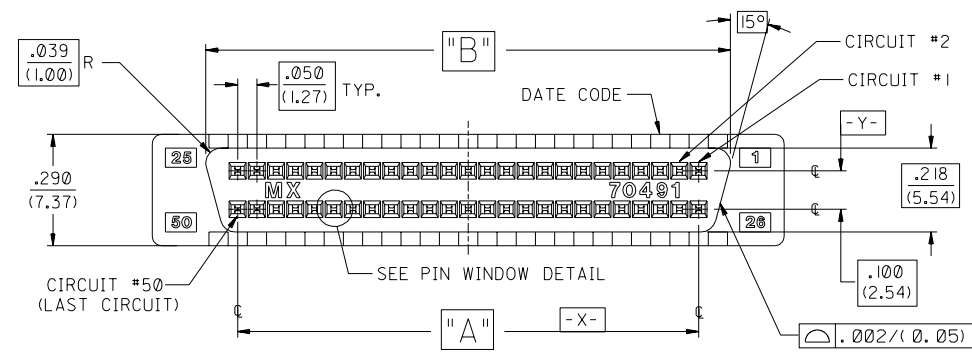
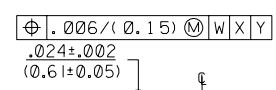
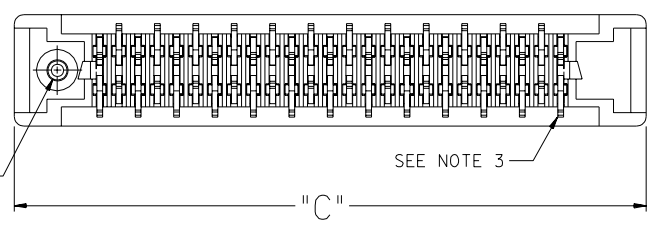


50 CIRCUIT SHOWN



SECTION "A-A"
SCALE 8:1



PIN WINDOW DETAIL
SCALE 10:1

NOTES:

1. SEE SHEET 2 FOR PART NO.S AND CHARTED DIMENSIONS AND P.C. BOARD LAYOUT.
2. 50 CIRCUIT SHOWN FOR ILLUSTRATION PURPOSES ONLY.
3. TAIL PATTERN FIXED AT CIRCUIT NO. (1) POSITION FOR ALL CIRCUIT SIZES SHOWN.

DIMENSIONS SHOWN (METRIC) INCH UNLESS OTHERWISE SPECIFIED TOLERANCES: ANGULAR ± 1/2° 3 PLACE ± .010 2 PLACE ± --- ± 0.25 1 PLACE --- ± --- DRAFT WHERE APPLICABLE MUST REMAIN WITHIN DIMENSIONS DRWG. BY: J. Long APP'D. BY: J. D.		REVISIONS I ADD LEADFREE NOTE ECR# UCP2004-1925 DMORGAN 04/04/02 H ADDED 70491-2014 EDP#015870314 PER EC #UDT1999-0247 J. LONG 98/11/04 G ADDED PART NUMBER A-70491-2013 PER EC #UDT1998-0019 J. LONG 98/03/02		FILE NAME: S7049121.DGN TITLE: SALES SCSI ALL-PLASTIC VERTICAL RECEPTACLE ASSEMBLY WITH PEG SHEET NO. 1 of 2 DATE: 06/17/92 MOLEX INCORPORATED LITTLE ROCK, AR 60532 U.S.A. PART NO. SDA-70491-2*** DRWG. NO.	
LTR. REVISIONS LTR. REVISIONS LTR. REVISIONS LTR. REVISIONS		DIMENSIONS SHOWN (METRIC) INCH UNLESS OTHERWISE SPECIFIED TOLERANCES: ANGULAR ± 1/2°		REVISIONS ONLY ON CAD SYSTEM	

70491

2	1
1	1
MFG.	SH. REV.

ITEM NO.	ENG NO.	CKT. SIZE	PLATING	DIM. A		DIM. B		DIM. C		DIM. P TAIL LENGTH	RECOMMENDED PCB		
				INCH	MM	INCH	MM	INCH	MM		INCH	MM	
	015-87-0301	70491-2001	50	GOLD 30	1.200	30.48	1.366	34.70	1.645	41.78	.125	.062 OR .093	1.57 OR 2.36
X	015-87-0302	70491-2002										OR	OR
	015-87-0303	70491-2003	50	GOLD 30	1.200	30.48	1.366	34.70	1.645	41.78	.165	.125	3.18
X	015-87-0304	70491-2004											
	015-87-0305	70491-2005	68	GOLD 30	1.650	41.91	1.816	46.13	2.095	53.21	.125	.062 OR .093	1.57 OR 2.36
X	015-87-0306	70491-2006										OR	OR
	015-87-0307	70491-2007	68	GOLD 30	1.650	41.91	1.816	46.13	2.095	53.21	.165	.125	3.18
X	015-87-0308	70491-2008											
	015-87-0309	70491-2009	50	GOLD 30	1.200	30.48	1.366	34.70	1.645	41.78	.080	.062	1.57
X	015-87-0310	70491-2010											
	015-87-0311	70491-2011	68	GOLD 30	1.650	41.91	1.816	46.13	2.095	53.21	.080	.062	1.57
X	015-87-0312	70491-2012											
	015-87-0313	70491-2013	68	GOLD 15	1.650	41.91	1.816	46.13	2.095	53.21	.125	.062 OR .093	1.57 OR 2.36
X	015-87-0314	70491-2014	68	GOLD 15	1.650	41.91	1.816	46.13	2.095	53.21	.080	.062	1.57

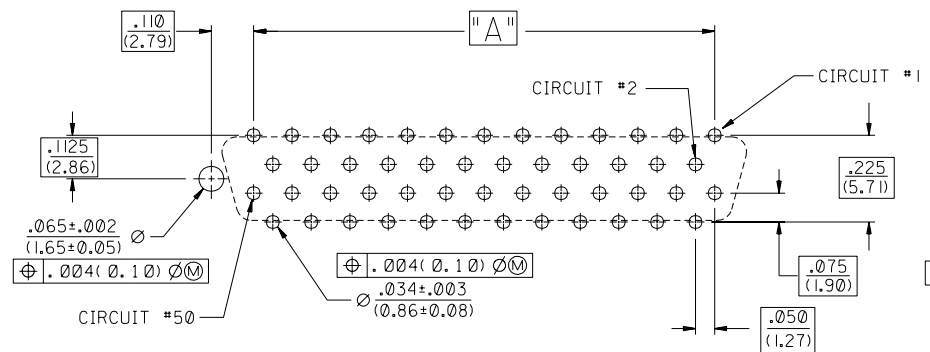
ASSEMBLY NO. LEGEND:

A-70491-2 ***

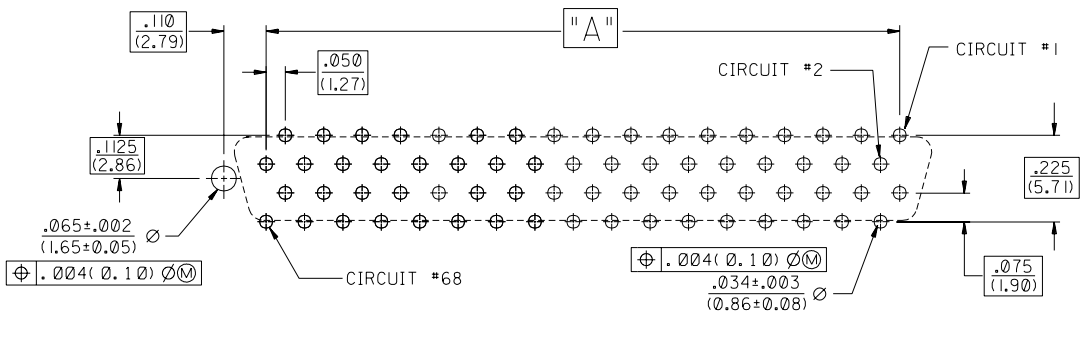
CIRCUIT SIZE, PLATING, AND TAIL LENGTH

LEFT PEG OPTION

X = INDICATED "NOT TOOLED"



RECOMMENDED 50 CKT. P.C. BOARD LAYOUT
CONNECTOR SIDE



RECOMMENDED 68 CKT. P.C. BOARD LAYOUT
CONNECTOR SIDE

NOTES:

- REFER TO PS-79058 PRODUCT SPEC. FOR ELECTRICAL, MECHANICAL AND ENVIROMENTAL SPECIFICATIONS.
- MATERIAL:
RECEPTACLE HOUSING: GLASS FILLED LIQUID CRYSTAL POLYMER (LCP);
COLOR: BLACK; UL 94V-0
CONTACTS: PHOSPHOR BRONZE
- PACKAGING:
PARTS PACKAGED IN TUBES PER PK-70873-0427.
- FINISHES: TERMINALS:
(GOLD 15)
SELECTIVE GOLD: THICKNESS= 15 MICROINCHES/(0.38 MICROMETERS) MINIMUM.
SELECTIVE TIN: THICKNESS= 75 MICROINCHES/(1.90 MICROMETERS) MINIMUM.
NICKEL UNDERPLATE OVERALL.
(GOLD 30)
SELECTIVE GOLD: THICKNESS= 30 MICROINCHES/(0.76 MICROMETERS) MINIMUM.
SELECTIVE TIN: THICKNESS= 75 MICROINCHES/(1.90 MICROMETERS) MINIMUM.
NICKEL UNDERPLATE OVERALL.

NOTE FOR LEAD FREE CONVERSION:

THE PRIMARY SHIPPING CARTON WILL BE LABELED "COMPLIANT TO ROHS DIRECTIVE 2002/95/EC AND ELV ANNEX II OF DIRECTIVE 2000/53/EC". CARTONS WITHOUT THIS LABEL MAY CONTAIN PRODUCT WITH LEAD.

LTR.	REVISIONS	LTR.	REVISIONS

DIMENSIONS SHOWN (METRIC) INCH	
UNLESS OTHERWISE SPECIFIED TOLERANCES: ANGULAR 1/2°	
5 PLACE ± .010	---
2 PLACE ± ---	± 0.25
1 PLACE ---	± ---
DRAFT WHERE APPLICABLE MUST REMAIN WITHIN DIMENSIONS	
DRG. BY: J. Long	CHK'D. BY: DCB
APP'D. BY: J D	SCALE: :

▽ = 0	▼ = 0	REVISE ONLY ON CAD SYSTEM
TITLE: SALES SCSI ALL-PLASTIC VERTICAL RECEPTACLE ASSEMBLY WITH PEG		
MOLEX INCORPORATED	SHEET NO. 2	DATE 06/17/92
U.S.A.	DRWG. NO. SDA-70491-2***	
FILE NAME: 51049122.DGN	DIV. TC	

70491