

4

3

2

1


THIS DRAWING IS UNPUBLISHED. RELEASED FOR PUBLICATION
© COPYRIGHT ALL RIGHTS RESERVED.

LOC	DIST	REVISIONS			
P	LTR	DESCRIPTION	DATE	DWN	APVD
	B2	ECR-16-011296	03OCT2016	GK	SD

REPLACED BY OCEAN STYLE APPLICATOR PART NUMBER 2836281-1

FOR REPLACEMENT PARTS FOR APPLICATOR 1528476
REFER TO ADDITIONAL PAGE(S). SPARE PARTS KIT (IF LISTED)
WILL REMAIN AVAILABLE.

THE REPLACEMENT OCEAN STYLE APPLICATOR HAS THE
SAME TERMINATOR/PRESS INTERFACE AS APPLICATOR
1528476

THIS DRAWING IS A CONTROLLED DOCUMENT.		DWN	GOPALAKRISHNA HV		 TE Connectivity
DIMENSIONS:		CHK	GOPALAKRISHNA HV		
TOLERANCES UNLESS OTHERWISE SPECIFIED:		APVD	STOUGH DALE		NAME FINE ADJ SIDE FD HD-I APPL
0 PLC ±		PRODUCT SPEC			
1 PLC ±		APPLICATION SPEC			SIZE A3
2 PLC ±		WEIGHT	CAGE CODE	DRAWING NO	
3 PLC ±				©- 1528476	
4 PLC ±				SCALE	SHEET 1 OF 2 REV B2
ANGLES ±				CUSTOMER DRAWING	
MATERIAL	FINISH				

PART NUMBER	REV	FIRST USED	TERMINATOR	FEED TYPE	DESCRIPTION
1528476-1	B	-	LEADMAKER	MECH POST FEED	CUTS CARRIER
1528476-2	B	-	BENCH	MECH PRE FEED	CUTS CARRIER
1528476-6	B	-	LEADMAKER	MECH POST FEED	CONTINUOUS CARRIER
7-1528476-1	B	-	LEADMAKER	MECH POST FEED	-1 AND SPARE PARTS
7-1528476-2	B	-	BENCH	MECH PRE FEED	-2 AND SPARE PARTS
7-1528476-6	B	-	LEADMAKER	MECH POST FEED	-6 AND SPARE PARTS
7-1528476-7	A	-	-	-	SPARE PARTS KIT

CRIMP	SIZE	TYPE	RANGE
WIRE	2.79 [.110 IN]	F	1.50mm ² -3.00mm ²
INSUL	3.94 [.155 IN]	F	2x 3.4 MAX [2 X .134 IN MAX]
WIRE STRIP LENGTH	APPL INSTRUCTION		
REFER TO APPL SPEC	408-8322 & 408-8490		

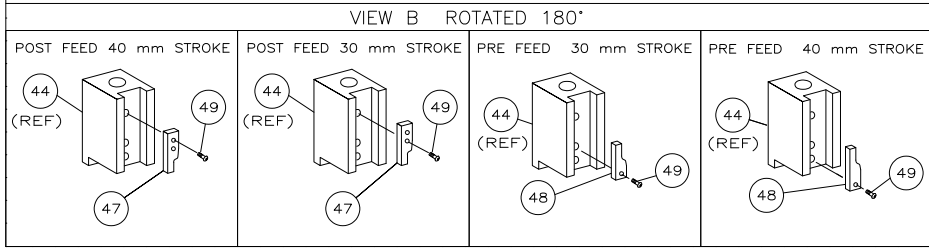
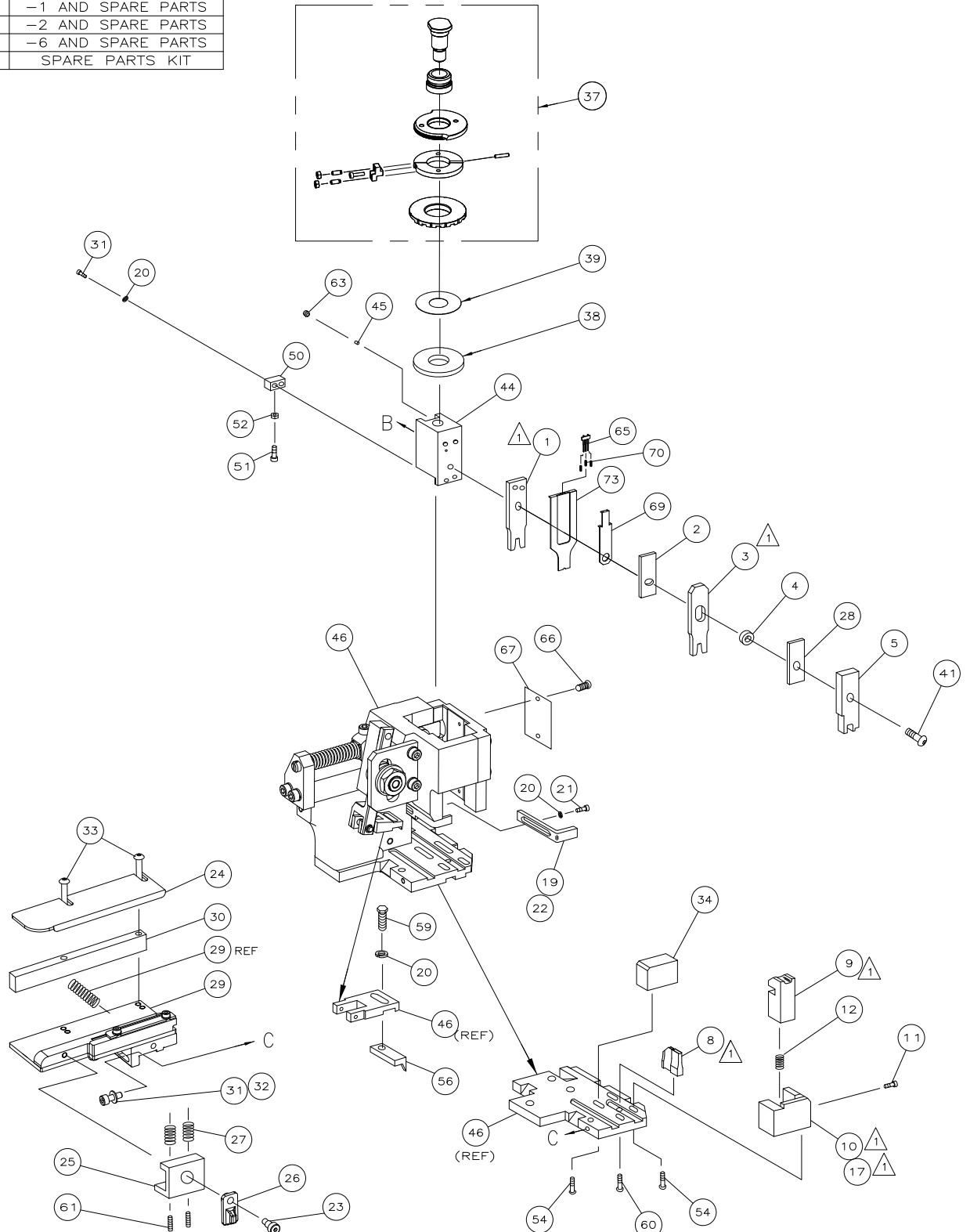
TERMINAL	FEED
APPL SPEC 114-18037	16.00 [.630 IN]

TERMINALS APPLIED				
964204	-	-	-	-
964052	-	-	-	-
1241174	-	-	-	-
-	-	-	-	-
-	-	-	-	-
-	-	-	-	-
-	-	-	-	-
-	-	-	-	-

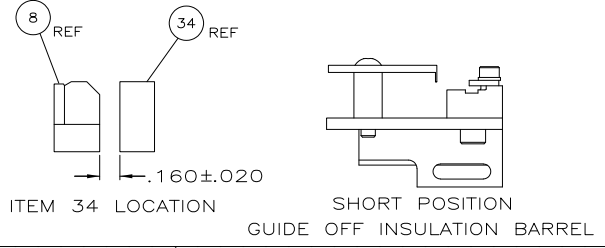
WIRE SIZE mm ² AWG	CRIMP HEIGHT *	REF SETTING
3.00mm ²	2.20 ±0.05 [.087 ±0.002 IN]	B 1
14 AWG+20 AWG	2.08 ±0.05 [.082 ±0.002 IN]	C 0
2.50mm ²	2.07 ±0.05 [.081 ±0.002 IN]	C 2
2.25mm ²	2.01 ±0.05 [.079 ±0.002 IN]	C 5
14 AWG	1.96 ±0.05 [.077 ±0.002 IN]	C 8
2.00mm ²	1.94 ±0.05 [.076 ±0.002 IN]	C 9
1.50mm ²	1.81 ±0.05 [.071 ±0.002 IN]	D 8
16 AWG	1.76 ±0.05 [.069 ±0.002 IN]	E 4
-	-	-
-	-	-
-	-	-
-	-	-
-	-	-
-	-	-
-	-	-

SET UP GAGE	LAYOUT
458637-3	L1528476

- 1. RECOMMENDED SPARE PARTS.
- 2. GREASE RAM, CAM, CAM FOLLOWER AND FEED ROD LIGHTLY.
- 3. LUBRICATE DAILY PER THE APPLICATOR INSTRUCTION SHEET SUPPLIED WITH THE APPLICATOR.
- 4. THIS APPLICATOR IS DESIGNED FOR DOUBLE WIRE APPLICATION. DOUBLE WIRE INSULATION SIZES CANNOT EXCEED 2 X 3.40MM MAX.



*** WARNING:**
 ON INSTALLATION, SET WIRE DISC TO LARGEST WIRE SIZE SETTING. USE OF SETTINGS BELOW MIN REQUIRED CRIMP HEIGHT SETTING WILL CAUSE DAMAGE TO CRIMP TOOLING.



QTY	REQD	PER	ASSY	PART NO	DESCRIPTION	ITEM NO
-	1	1	1	1490525-1	DEPRESSOR, WIRE	73
-	1	1	1	1528476	PRINT, APPLICATOR LOG SHEET	72
-	1	1	1	1338705-3	DOCUMENTATION PACKAGE	71
-	3	3	3	2-23147-2	SPRING, DEPRESSOR	70
-	1	1	1	1490524-2	SPACER, DEPRESSOR	69
-	1	1	1	461264-5	PLATE, IDENTIFICATION	68
-	2	2	2	21017-2	SCR_DRIVE(#2x.19)ID PLATE	67
-	1	1	1	1424350-1	HOLDER, PIN, WIRED	65
-	1	1	1	3-18031-0	SCR_SKT_SET(M6X6)RAM	64
-	2	2	2	2-18032-5	SCR_SET_FLT_POINT(M5X20)	61
-	1	1	1	18024-7	SCR_BHC(M4X10)ANVIL	60
-	1	1	1	5-18022-2	SCR_HEX(M4X8)FEED FINGER	59
-	1	1	1	1338685-1	PAWL, FEED	58
-	4	4	4	18024-8	SCR_BHC(M4x12)SHEAR HOLDER	54
-	1	1	1	18030-1	NUT_HEX(M3)HOLD DOWN	52
-	1	1	1	811242-6	BUMPER, HOLDDOWN	51
-	1	1	1	690753-2	SPACER, TONKER	50
-	1	1	1	18024-3	SCR_BHC(M3X10)CAM	49
-	1	1	1	1338675-1	CAM, PRE FEED 30 & 40 mm ST	48
-	1	1	1	1338676-1	CAM, POST FEED 30 & 40 mm ST	47
-	1	1	1	1320999-3	APPLICATOR BASIC SUBASSY	46
-	1	1	1	690191-1	PLUG, NYLON	45
-	1	1	1	1333257-1	RAM	44
-	1	1	1	2-18024-6	SCR_BHC(M8X25)RAM	41
-	1	1	1	690125-1	SHIM SUBASSY	39
-	1	1	1	1-469367-0	SPACER, FINE ADJUST	38
-	1	1	1	879103-2	FINE ADJUST HEAD SUBASSY	37
-	1	1	1	1-1320934-3	SUPPORT, TERMINAL	34
-	2	2	2	1-18024-0	SCR_BHC(M4X20)STRIP GUIDE	33
-	1	1	1	18027-2	WASHER, FLAT(M4)	32
-	3	3	3	1-18023-2	SCR_SKT_CAP(M4X12)MOUNT BLOCK	31
-	1	1	1	1320908-3	SPACER, STRIP GUIDE	30
-	1	1	1	1633073-2	STRIP GUIDE PLATE ASSY	29
-	1	1	1	1-455888-0	SPACER, FRONT SHEAR DEP	28
-	2	2	2	1-22284-0	SPRING, DRAG	27
-	1	1	1	356835-1	LEVER, DRAG RELEASE	26
-	1	1	1	240792-1	DRAG, TERMINAL	25
-	1	1	1	1320928-1	PLATE, STRIP GUIDE	24
-	1	1	1	980371-4	SCR_SHC_SHLD	23
-	1	1	1	690472-2	STRIPPER	22
-	1	1	1	1-18023-1	SCR_SHC(M4X10)STRIPPER	21
-	4	4	4	18025-2	WASHER_LOCK(M4)STRIPPER	20
-	1	1	1	690472-1	STRIPPER	19
-	1	1	1	1338684-1	HOLDER, SHEAR, FRONT (NO-CUT)	17
-	1	1	1	3-22280-3	SPRING, SHEAR	12
-	1	1	1	356885-4	STOP, SHEAR	11
-	1	1	1	1320921-1	HOLDER, SHEAR, FRONT (CUT)	10
-	1	1	1	454276-1	SHEAR, FLOAT (FRONT)	9
-	1	2	2	4-1333207-7	ANVIL	8
-	1	1	1	2-455889-1	DEPRESSOR, SHEAR (FRONT)	5
-	1	1	1	238011-4	SPACER, BLOCK CRIMPER	4
-	1	2	2	3-1424909-3	CRIMPER, INSULATION	3
-	1	1	1	455888-1	SPACER, CRIMPER	2
-	1	2	2	2-456408-8	CRIMPER, WIRE	1

THIS DRAWING IS A CONTROLLED DOCUMENT. DWN L/LOFHOUSE 25NOV04
 DIMENSIONS: INCHES 0 PLC ±.0005, 1 PLC ±.0010, 2 PLC ±.0015, 3 PLC ±.0020, 4 PLC ±.0025
 TOLERANCES UNLESS OTHERWISE SPECIFIED: FINISH -

APVD F BACKHURST 25NOV04 NAME Tyco Electronics Tyco Electronics Corporation Harrisburg, PA 17105-3608

PRODUCT SPEC FINE ADJ SIDE FD HD-1 APPL

APPLICATION SPEC

SIZE CAGE CODE DRAWING NO A1 00779 C=1528476

RESTRICTED TO

CUSTOMER DRAWING SCALE SHEET 1 OF 1 REV B1