

AHML Series

Low-frequency Dual-stage Medical-grade EMI Filter



These series range of double stage filters with low leakage give superior performance when used in applications with low Impedance loads controlling pulsed, continuous and intermittent interference noise and where high levels Of mains borne interference are present.

Filter with additional differential mode rejection in low frequency. For use with switched mode power supplies to reduce noise from power supply back into the mains. Filter also provides good attenuation of incoming interference.



FEATURES

- Double stage filter
- Low Leakage
- Superior Performance
- Chassis mounting
- High conducted attenuation performance

APPLICATIONS

- Medical Equipment
- Diagnostic Equipment
- Low Leakage Applications
- X ray Machines
- MRI

SERIES SPECIFICATIONS

Standard Part No.	Rated current @40°C	Termination Tab	Screw	Weight (g)
AHM-L01	1A	6.3 x 0.8		125
AHM-L02	2A	6.3 x 0.8		125
AHM-L03	3A	6.3 x 0.8		165
AHM-L06	6A	6.3 x 0.8		165
AHM-L10	10A	6.3 x 0.8		165
AHM-L15	15A	6.3 x 0.8		260
AHM-L20	20A		M5	600
AHM-L25	25A		M5	600
AHM-L30	30A		M5	600
AHM-L35	35A		M5	600
AHM-L40	40A		M5	600
AHM-L50	50A		M6	600

CHARACTERISTICS

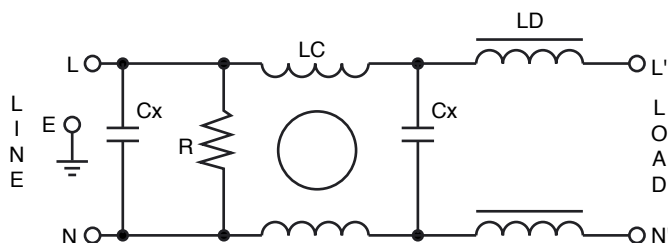
Max. Cont. Oper. Voltage	250VAC
Operating Frequency	50/60Hz
Current ratings	1A to 50A @40°C
High Potential test voltage	L to G 2120Vdc for 1 Minute; L to L 1414Vdc for 1 Minute
Design	corresponding to UL 60939-3, CSA 22.2 No.8-13 and IEC 60939
Overload Capability	135% of Rated current for 15 min.
Flammability	corresponding to UL 94 V-0
Temperature range	-25°C to +85°C
Climatic Category	25/85/21
Recommended Torque (Nm)	M5: 1.0-2.0; M6: 1.25 – 2.5; M8: 2.5-5; M10: 3.5-7

(continued)

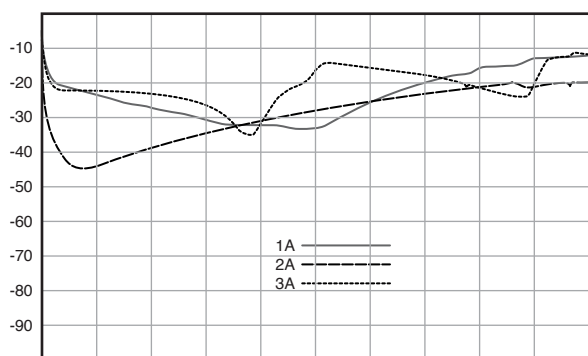
AHML Series

Low-frequency Dual-stage Medical-grade EMI Filter

CIRCUIT DIAGRAM

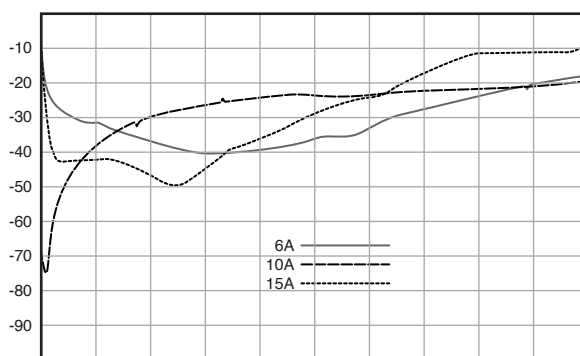


INSERTION LOSS



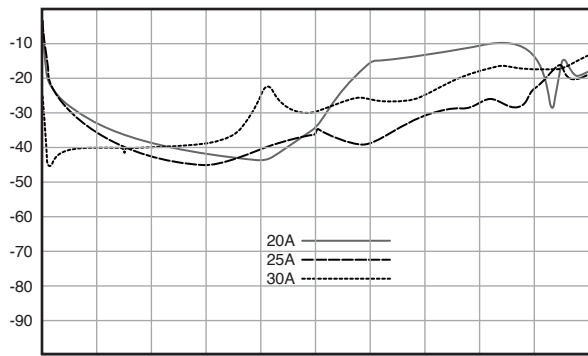
Start 30.00kHz

Stop 30.00MHz



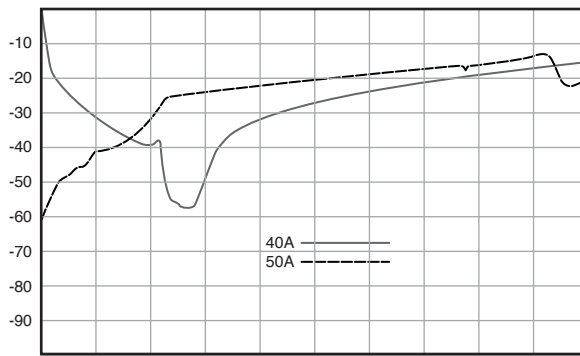
Start 30.00kHz

Stop 30.00MHz



Start 30.00kHz

Stop 30.00MHz



Start 30.00kHz

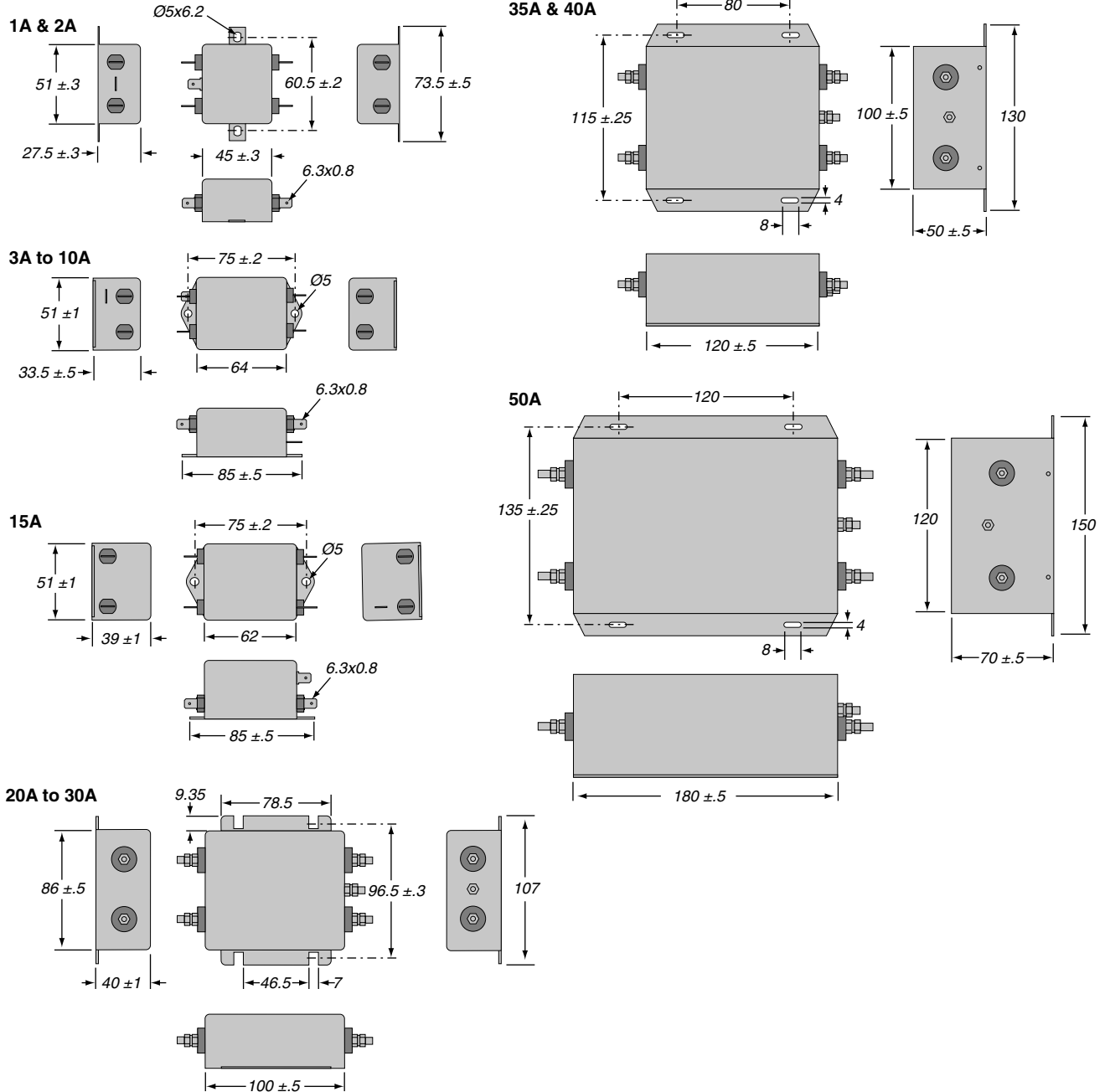
Stop 30.00MHz

AHML Series

Low-frequency Dual-stage Medical-grade EMI Filter

DIMENSIONS

All dimensions in mm; Tolerances according to ISO2768-m



ORDERING INFORMATION

A H M - L 0 2
 Series Medical Low Current
 Grade frequency rating

Standard part numbers

AHM-L01	AHM-L20
AHM-L02	AHM-L25
AHM-L03	AHM-L30
AHM-L06	AHM-L35
AHM-L10	AHM-L40
AHM-L15	AHM-L50