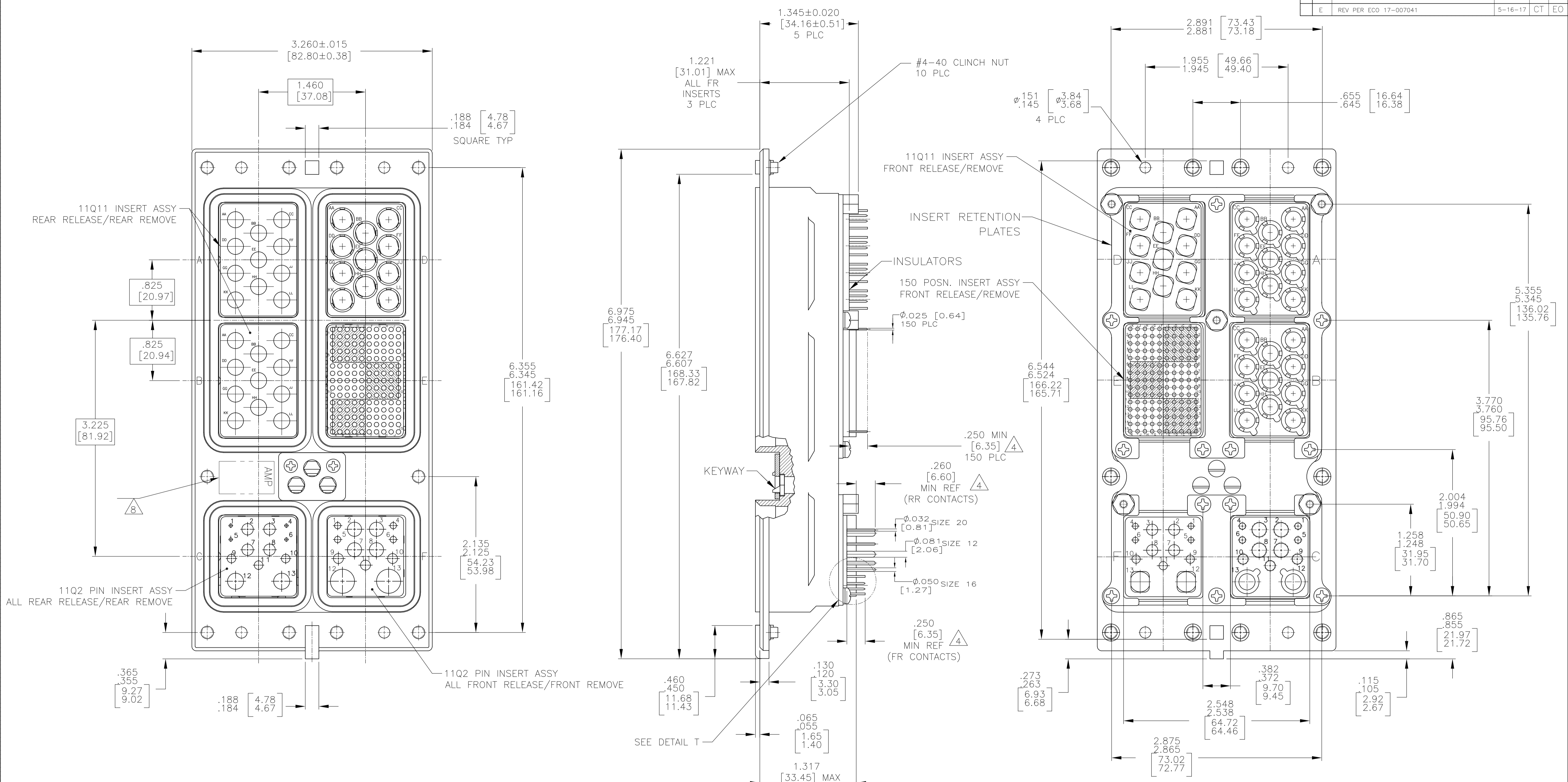
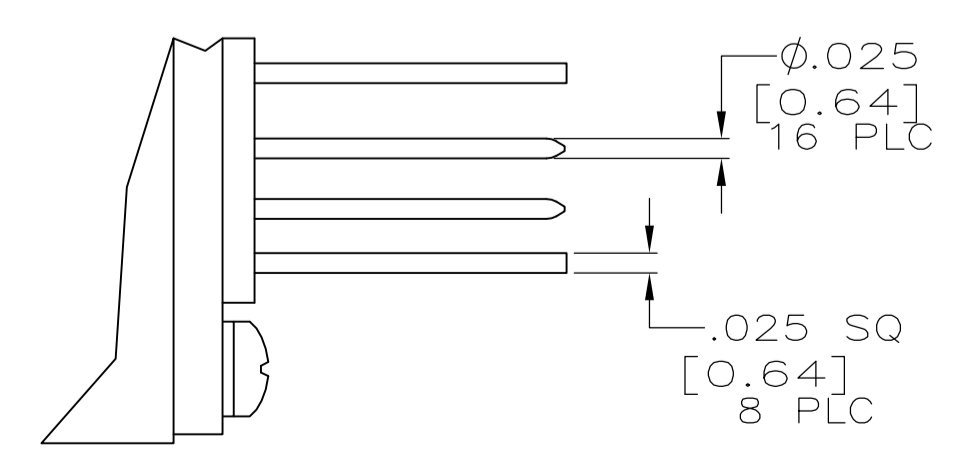


REVISIONS				
REV	DATE	BY	APPV	DESCRIPTION
E	5-16-17	CT	EO	REV PER ECO 17-007041



- CONNECTOR DIMENSIONS ARE PER ARINC 600 SPECIFICATION.
- CONNECTOR IS SUPPLIED WITH CONTACTS (PER TABLE) ASSEMBLED AS SHOWN.
- KEYING SHOWN IN POSITION "01" FOR ILLUSTRATION ONLY. CONNECTORS SHIPPED WITH KEYING INSTALLED IN POSITION PER TABLE. FOR POSITION "00" KEYING HARDWARE SHIPPED UNASSEMBLED.
- WITH CONTACT FULLY SEATED IN CAVITY.
- CONTACTS NOT SHOWN IN FRONT & REAR VIEWS FOR CLARITY.
- DUST COVERS ARE INSTALLED FOR SHIPPING. (NOT SHOWN)
- TE LOGO APPEARS IN THIS APPROXIMATE LOCATION ON MACHINED FROM BILLET SHELLS.
- ASSEMBLY SHOWN WITH DIE CAST SHELL. ASSEMBLIES WITH MACHINED SHELLS MAY VARY SLIGHTLY IN APPEARANCE.



COMPONENT	MATERIAL	FINISH
SHELL	DIE CAST ALUMINUM PER ASTM-B-85 OR ASTM B211 6061-T6 OR ASTM B209 2024-T4	CHEMICAL COVERAGE COATING PER MIL-C-5541, CLASS 1A
RETENTION PLATES	ALUMINUM ALLOY PER ASTM-B-209	CHEMICAL COVERAGE COATING PER MIL-C-5541, CLASS 1A
SCREWS AND LOCKWASHERS	STEEL OR STAINLESS STEEL	CHROMATE OVER ZINC OR PASSIVATED
POLARIZING KEYS	ZINC ALLOY PER ASTM-B-86	-
150 & 11Q2 INSERTS	THERMOSET OR PPS	-
11Q11 INSERTS	ALUMINUM ALLOY	ELECTROLESS NICKEL
POLARIZING KEY RETAINING PLATE	ALUMINUM ALLOY PER ASTM-B-209	BLUE ANODIZED PER MIL-A-8625
STANDOFFS & LOCKWASHERS	STAINLESS STEEL	PASSIVATED

03	MODULE A & B NO CONTACTS SUPPLIED	1757542-1
	MODULE C 1663129-5 (RR SIZE 12 POSTED, QTY=4) 1663128-8 (RR SIZE 16 POSTED, QTY=3) 1663533-2 (RR SIZE 20 POSTED, QTY=4)	
03	MODULE D 1445626-4 (SIZE 8 QUADRAX POSTED, QTY=11)	1757542-1
	MODULE E 211431-4 (SIZE 22, QTY=150)	
03	MODULE F 448140-3 (SIZE 12 POSTED, QTY=4) 1-448138-5 (SIZE 20 POSTED, QTY=4) 1-448139-1 (SIZE 16 POSTED, QTY=3) 1445626-4 (SIZE 8 QUADRAX POSTED, QTY=2)	1757542-1
	CONTACTS INCLUDED AND INSTALLED	
THIS DRAWING IS A CONTROLLED DOCUMENT.		TE Connectivity RCPT ASSY, SIZE 3, ARINC 600 (11Q11/11Q11/11Q2/11Q11/150/11Q2)
DIMENSIONS: INCHES TOLERANCES UNLESS OTHERWISE SPECIFIED: 0 PLC ± .0005 1 PLC ± .0005 2 PLC ± .0005 3 PLC ± .0005 4 PLC ± .0005 ANGLES ± .0005		
MATERIAL SEE TABLE		APVD: K. HOGAN 1/3/05 PRODUCT SPEC APPLICATION SPEC WEIGHT: 0.000000 CUSTOMER DRAWING: A1 00779 ©=1757542
SCALE: 1:1		SHEET 1 OF 1 REV E