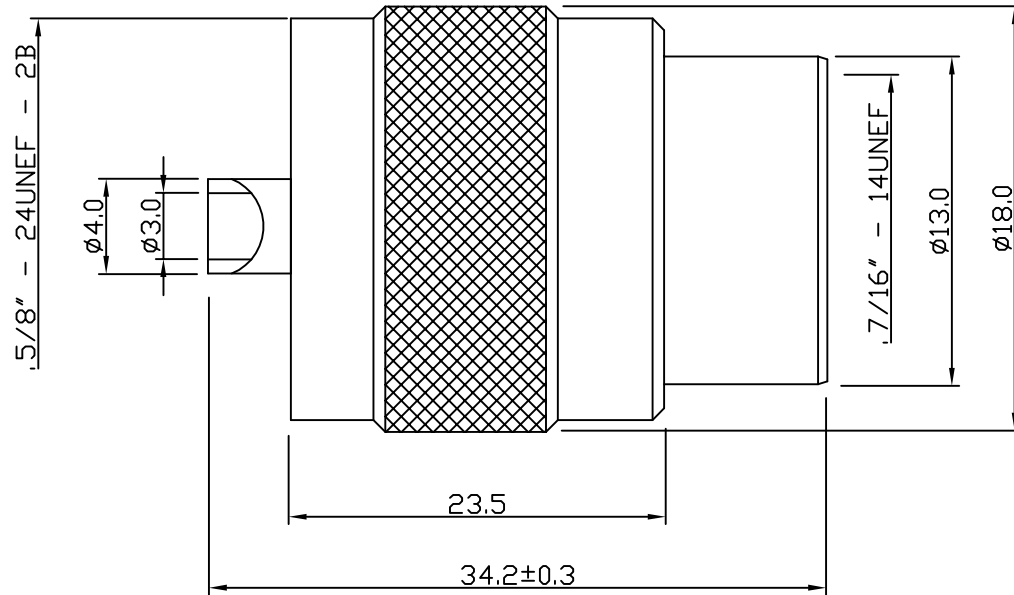


RoHS COMPLIANT



**Electrical Characteristics**

Nominal Impedance:	Non Constant
Frequency Range:	DC to 300 Mhz
Operating Voltage (rms):	500 V maximum at sea level
Dielectric Withstand Voltage (rms):	1500 V maximum at sea level
Contact Resistance:	1.5 milliohms maximum
Insulation Resistance:	5000 megohms minimum

**Mechanical Characteristics**

Mating Cycles:	500 cycles minimum
Interface Dimensions:	Conform to MIL-C-39012

	PART	DESCRIPTION
1	Body	Brass, nickel plated
2	Pin	Brass, nickel plated
3	Shell	Brass, nickel plated
4	Insulator	Bakerlite

First Issue	MT	1	27 July 06
DESCRIPTION OF REVISION	APPVD	ISS	DATE



Cinch Connectivity Solutions  
7-13 Russell Way,  
Widford Industrial Estate,  
Chelmsford,  
Essex, CM1 3AA, UK  
Tel: +44 (0) 1245 359515  
Fax: +44 (0) 1245 358938

SCALE: Not To Scale	DRAWN BY:	M Terry
DIMENSIONS: mm	CHECKED BY:	J Williams
TOLERANCES: $\pm 0.2\text{mm}$ unless otherwise stated	APPROVED BY:	A Tusi
	DATE:	22 Jun 06

TITLE:	PART NUMBER:
<b>Twist On UHF Male For RG213</b>	<b>TO259-213</b>
	PAGE: 1 of 1