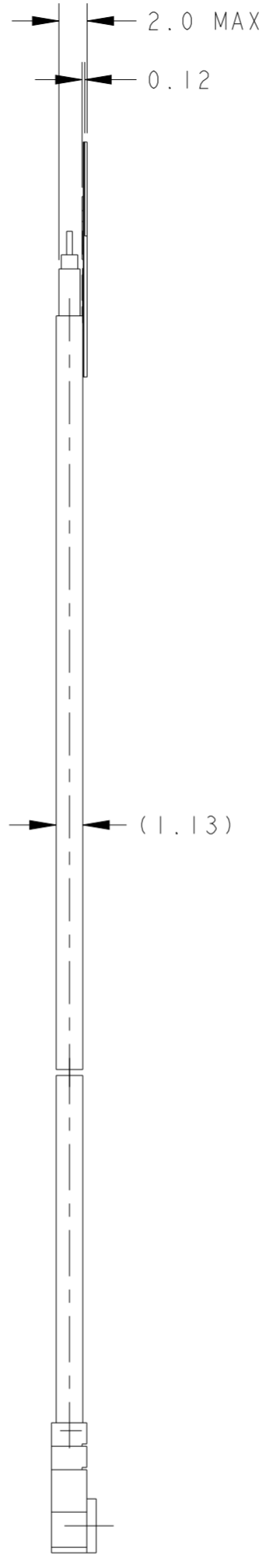
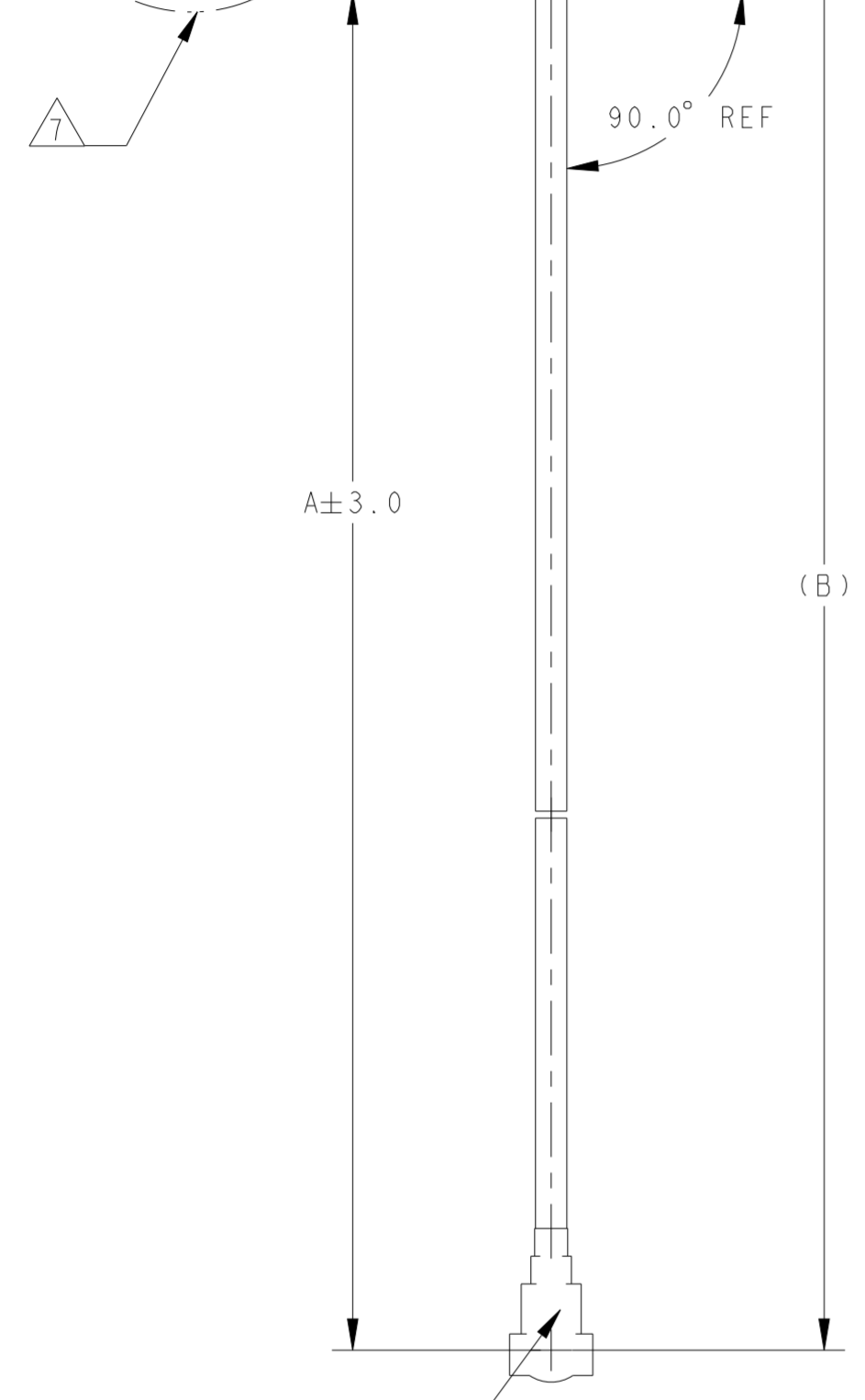
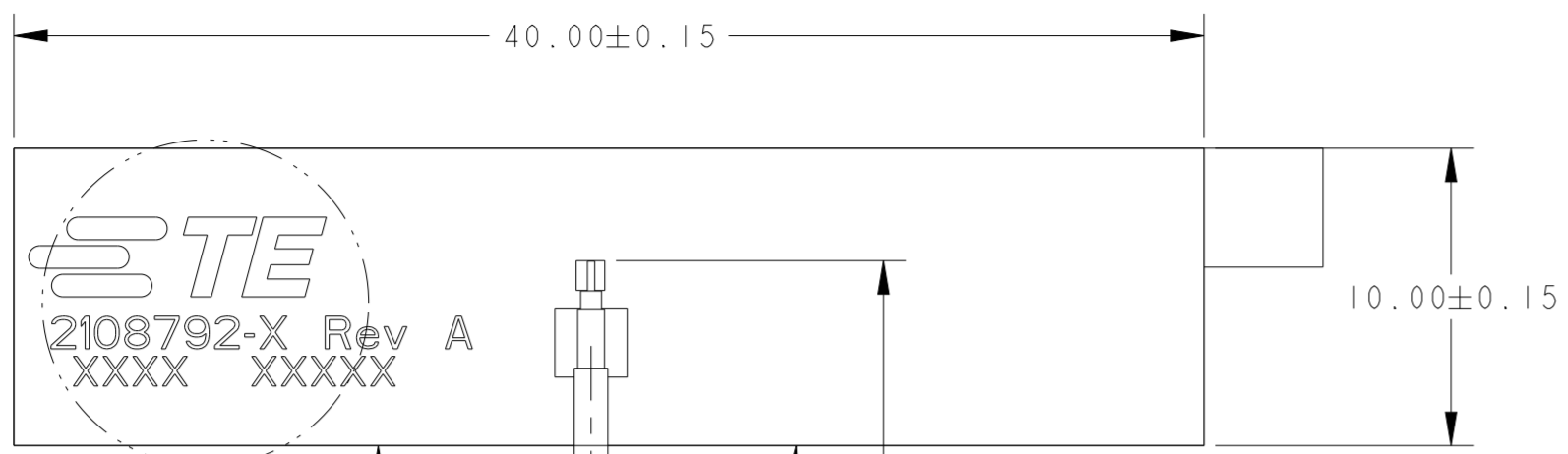


P	LTR	DESCRIPTION	DATE	DWN	APVD
A		REVISED PER ECO-20-009276	02JUL2020	SJ	JH
B		REVISED PER ECO-20-014801	20OCT2020	SJ	JH
BI		REVISED PER ECN-21-117423	14SEP2021	SJ	CY



CONNECTOR MATING FACE DOWN IN THIS VIEW "C"

NOTES: UNLESS OTHERWISE SPECIFIED.

- FABRICATE TO MEET IPC - 6013, CLASS 2. INSPECT TO MEET IPC - A - 600, CLASS 2.
- MATERIAL :
A. PI FILM + VHB DOUBLE SIDED ADHESIVE.
B. CABLE : COAX CABLE DIA 1.13, CONN:I-PEX or TE APPROVED EQUIVALENT.
- FINISH:
A: SOLDERMASK BOTH SIDES: ORANGE.
- GENERAL TOLERANCE : ±0.2.
- PACKAGING: SINGULATED PARTS TO BE SECURELY BAG WRAPPED, BAGGED OR VACUUM PACKED IN BULK.
- CONSULT TE CONNECTIVITY DATA SHEET DS2108792.
- SILKSCREEN; WHITE EPOXY INK
A. TE LOGO, TE P/N
B. WORD REV., FOLLOWED BY THE LATEST REVISION LETTER, AS SHOWN.
C. 4 DIGIT DATE CODE: FIRST 2 DIGITS FOR THE WEEK CODE AND THE 2ND TWO DIGITS FOR THE YEAR CODE.
OTHERS: SPECIFIC TE SOURCE CODE NUMBER DIGITS AS REQUIRED.

MHF 4L or COMPALTBLE	(206.2)	200.0	2108792-9
	(156.2)	150.0	2108792-8
	(106.2)	100.0	2108792-7
MHF or COMPALTBLE	(56.2)	50.0	2108792-6
	(206.2)	200.0	2108792-5
	(156.2)	150.0	2108792-4
	(106.2)	100.0	2108792-3
"C" CONNECTOR TYPE	(56.2)	50.0	2108792-2
	(120.0)	113.80	2108792-1
	(B)	A	PART NUMBER

THIS DRAWING IS A CONTROLLED DOCUMENT.		DWN S.J. NOH 27APR2020	STE TE Connectivity	
DIMENSIONS: mm		CHK H. SHIN 27APR2020		
TOLERANCES UNLESS OTHERWISE SPECIFIED:		APVD JH. KIM 27APR2020	NAME FPC ANT, MHF/MHF4L, Wi-Fi 6E TRIPLE	
0 PLC ± 1 PLC ± 2 PLC ± 3 PLC ± 4 PLC ± ANGLES ±		PRODUCT SPEC -	SIZE A2	
MATERIAL -		APPLICATION SPEC -	CAGE CODE 00779	DRAWING NO C-C-2108792
FINISH finish_spec_2		WEIGHT -	RESTRICTED TO	SCALE 4:1
CUSTOMER DRAWING			SHEET 1	REV BI