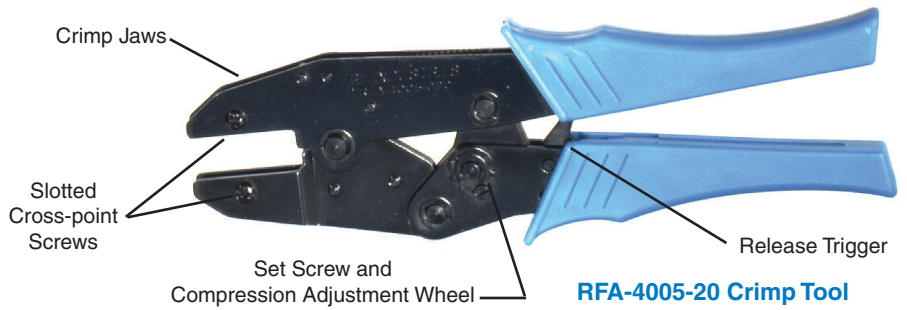




Division of RF Industries

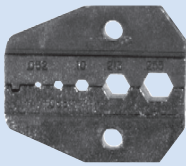
RFA-4005 and RFA-4006 Crimp Tool Kits

WARNING: This tool is not insulated against electrical shock and should be used with electrically insulated gloves. This tool is not to be used for purposes other than intended.

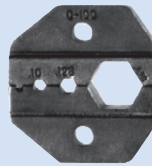


RFA-4005-20 Crimp Tool

Standard Die Sets



The **RFA-4005-01** die set is used to crimp RG-58/U, RG-59/U, RG-142/U, RG-8X, Proflex and various video cables. Cavity dimensions: .052", .068", .100", .213", & .255".



The **RFA-4005-02** die set is used to crimp RG-8/U, RG-213/U, RG-214/U, and Belden 9913 cables. Cavity dimensions: .100", .128", and .429".

See additional die sets on back.

Crimp Tool Description:

The crimp jaws hold the interchangeable crimp die sets in place and when the handles of the tool are squeezed the dies are clamped together. The dies are secured into the jaws by two screws. The screws may be easily removed with either a straight or cross-point screwdriver. A release trigger is provided to release the internal ratchet in case the tool cannot be completely compressed. After much use the tool may require readjustment of its jaws. This is done with the jaws fully opened by first removing the set screw. Then adjust the compression adjustment wheel counter-clockwise (to the +) in 1-indent steps or until proper adjustment is obtained. Then replace the set screw. The tool should be set so that when fully compressed the dies clamp firmly together.

Die Set Installation:

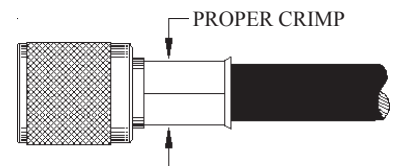
To install and change dies, insert the dies into the crimp tool jaws with the larger hex cavity towards the handles and loosely tighten the screws. Then close the jaws to properly align the dies and tighten the screws.

Crimping Instructions:

See applicable RF Industries cable assembly instructions for correct crimp sizes and crimping location(s) on connectors.

Center Contacts: Install proper die set into tool. With center contact positioned on center conductor, place contact into correct die cavity and completely compress handles together until handles release themselves.

Ferrules: Position ferrule over braid and/or jacket and crimp in place as outlined in the assembly instructions by compressing handles together until handles release themselves.



Note: If your crimp looks like the example on the right, you have either an oversized ferrule or an undersized crimp die cavity.



Ratchet Crimp System

Same handle works for coax and terminals

RFA-4006-500 •

Master Crimp Kit with Interchangeable Dies

Our **RFA-4006-500** kit contains two **RFA-4005-20** crimp handles and seventeen interchangeable die sets in one convenient, foam-lined plastic case. With one kit you can crimp terminals, modular plugs and coaxial cable from RG-174/U to LMR®-400. This is the most complete crimp kit we offer, and is sure to be a popular one for installers, field technicians and production floor use.

LMR® is a registered trademark of Times Microwave Systems.



RFA-4005-500 •

Terminal Crimp Tool Kit

This kit gives you everything you need to cut and crimp all types of insulated and non-insulated strip terminals. It contains the **RFA-4215** wire cutter and stripper, the **RFA-4005-20** crimp handle and seven crimp dies in a foam-lined plastic case.



RFA-4005-520 •

Coaxial Crimp and Strip Kit

This kit contains the **RFA-4005-20** crimp handle, the **RFA-4087** coaxial stripper and ten interchangeable die sets with hex cavities ranging from 0.042" to 0.429" across the flats. This assortment will crimp most coaxial connectors and contacts. All are contained in a rugged, foam-lined case.

Die Specifications

Replacement dies may be bought separately.



RFA-4005-01 •••

For RG-58/U, RG-59/U, RG-142/U, RG-223/U, RG-400/U, RG-8X, Proflex and various video cables, cavity dimensions: .052", .068", .100", .213" and .255".



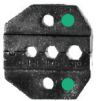
RFA-4005-02 •••

For RG-8/U, RG-213/U, RG-214/U, and Belden 9913 cables, cavity dimensions: .100", .128" & .429". The .128" cavity crimps the center pin on Belden 9913 cable.



RFA-4005-04 •••

.228", .068", .305", for RG-58/U, RG-59/U, RG-62/U and Cambridge Connectors Series CP-88 & CP-89



RFA-4005-05 •••

.155", .184", .215"



RFA-4005-06 •••

.255", .324", .354" for RG-59/U, RG-6/U, and F-Type (CATV) Coax Connectors



RFA-4005-07 •••

.213", .178", .068", .042", for RG-58/U, RG-174/U, RG-316/U Coax Connectors (RFI Cable Groups B and C)



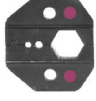
RFA-4005-08 •••

.324", .255", .068", .042", for RG-59/U and Belden 8281 Coax Cable (RFI Cable Groups D and G)



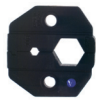
RFA-4005-09 •••

.178", .128", .068", for RG-174/U, RG-188/U, RG-316/U and Mini 59/U Coax Connectors (RFI Cable Group B)



RFA-4005-10 •••

.080", .100", .429" for RG-8/U, RG-11/U and RG-213/U (RFI Cable Group E)



RFA-4005-14 •••

Crimps coaxial connectors on Belden 9913, LMR®-400, WBC-400 (RFI Cable Group I); .429", .118" hex cavities



RFA-4005-21 •••

For non-insulated terminals AWG 22-8



RFA-4005-22 •••

For non-insulated flag terminals from 0.5 to 2.5 sq.mm. AWG 22-18, 16-14



RFA-4005-23 •••

For cord end terminals from 0.5 to 10 sq.mm. AWG 22-8



RFA-4005-24 •••

For insulated terminals from 0.5 to 6 sq.mm. AWG 22-18, 16-14, 12-10



RFA-4005-25 •••

For non-insulated open barrel terminal from 0.5 to 6 sq.mm. AWG 22-18, 16-14, 12-10



RFA-4005-26 •••

For non-insulated terminals and cable lugs from 1.5 to 6 sq.mm. AWG 22-18, 16-14, 12-10



RFA-4005-27 •••

For non-insulated terminals DIN 46234 from 0.5 to 10 sq.mm. AWG 22-18, 16-14, 12-10, & 8

LMR® is a registered trademark of Times Microwave Systems.