

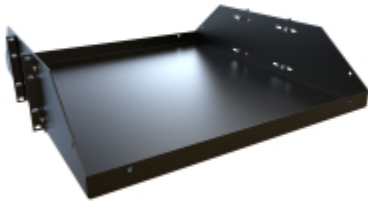


Quality Products. Service Excellence.

Two Post Heavy Duty Battery Shelf *BRS Series*

550 lbs (250 kg) Weight Capacity

Features

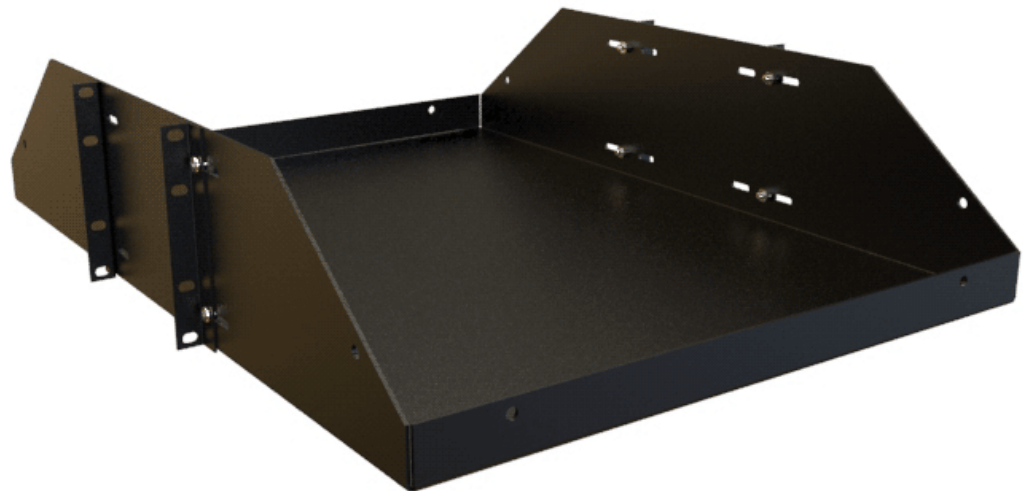


- Designed for use with our heavy-duty **DNRR** and **DRZ4** double-tapped two (2) post racks
- Constructed of heavy-duty 12-gauge steel.
- Use to support heavy chassis or batteries for DC battery array.
- Choice of 19-inch or 24-inch deep.
- The front and rear lips are folded and welded for extra strength and liquid retainer.
 - For a similar design that is light-duty and vented, see the **DNRM Series**.
- Finished in textured RAL9005 black powder paint.
- 550 lbs (250 kg) **load rating**.
- TAA-compliant for GSA Schedule purchases.
- RoHS and REACH compliant.
- Manufactured in North America.



Accessories

- Rack Equipment Installation Tool



19 Inch Rack Mounting Shelf

Part No.	Rack Units	Mounting Dimensions		
		Height	Width	Depth
BRS2P1919BK	3U	5.25	19.00	19.00
BRS2P1924BK	3U	5.25	19.00	24.00

23 Inch Rack Mounting Shelf

Part No.	Rack Units	Mounting Dimensions		
		Height	Width	Depth
BRS2P2319BK	3U	5.25	23.00	19.00
BRS2P2324BK	3U	5.25	23.00	24.00

What's Inside the Box

Qty Included	Description	Replacement Part No.
1	Rack Shelf	
4	Rack mounting brackets	
1	Assembly Instructions	
8	10-32 Keps nut	
16	10-32 x 0.5in Assembly screws	
8	12-24 x 0.5in Screws	

Data subject to change without notice

© 2023. Hammond Manufacturing Ltd. All rights reserved.