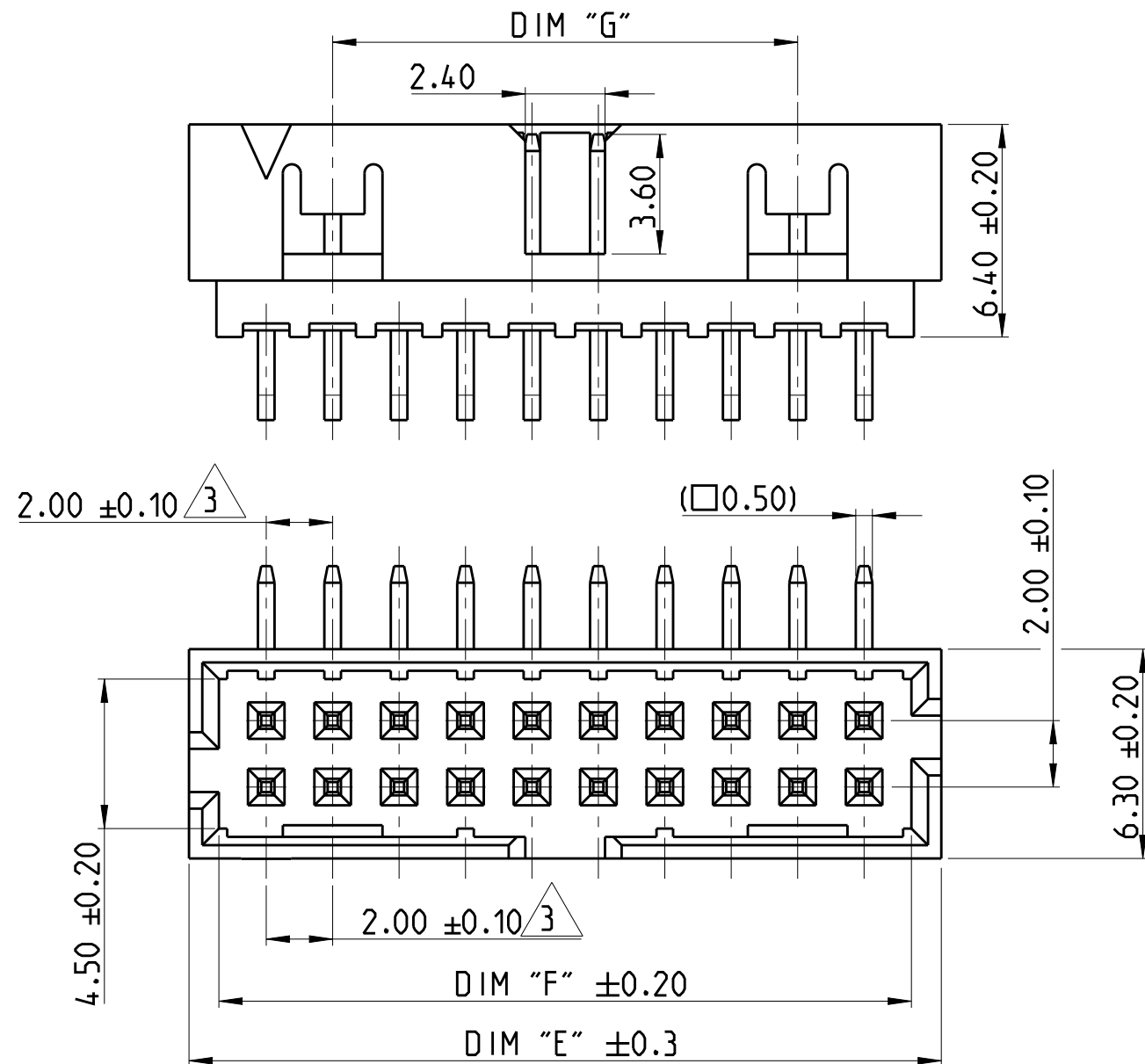


P	LTR	DESCRIPTION	DATE	DWN	APVD
A		RELEASE TO PRODUCTION	29NOV2019	AY	PS

NOTES:

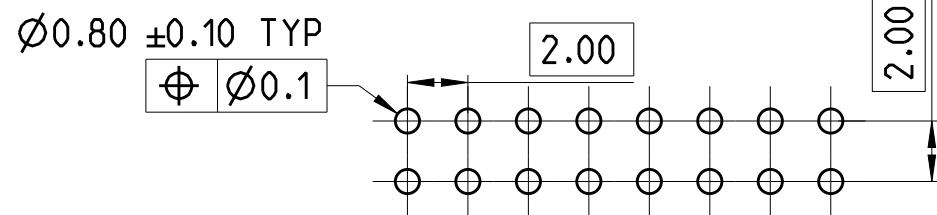
- MATERIAL
HOUSING : HIGH TEMPERATURE THERMOPLASTIC, UL94-V0; COLOR- BLACK
CONTACT PIN : COPPER ALLOY
FINISH : MIN. 2.0 μm TIN OVER NICKEL UNDER PLATING.
- PACKAGING: TUBE.
- TOLERANCE NOT CUMULATIVE.



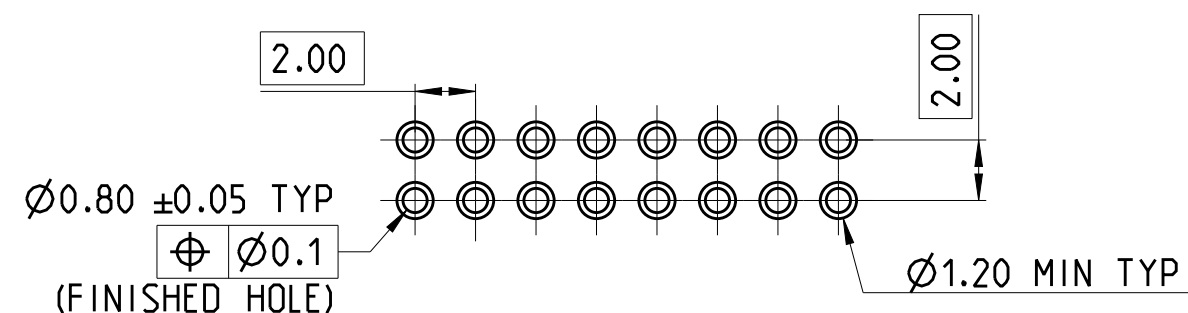
2-2842247-0 AS SHOWN

CONTACT PIN	ITEM NO.
2	1
DESCRIPTION	ITEM NO.

DIM "G"	DIM "F"	DIM "E"	POS.	TE PN
44	50.85	52.65	50	5-2842247-0
38	44.85	46.65	44	4-2842247-4
34	40.85	42.65	40	4-2842247-0
28	34.85	36.65	34	3-2842247-4
24	30.85	32.65	30	3-2842247-0
20	26.85	28.65	26	2-2842247-6
18	24.85	26.65	24	2-2842247-4
14	20.85	22.65	20	2-2842247-0
10	16.85	18.65	16	1-2842247-6
8	14.85	16.65	14	1-2842247-4



RECOMMENDED PCB HOLE PATTERN FOR THROUGH HOLE WAVE



RECOMMENDED PCB HOLE PATTERN FOR THROUGH HOLE REFLOW/PIN-IN-PASTE

THIS DRAWING IS A CONTROLLED DOCUMENT.		DWN ANKIT YADAV 09SEP2019
		CHK KARTHIK JK 12SEP2019
		APVD PRASHANTH S 13SEP2019
DIMENSIONS: mm		PRODUCT SPEC 108-64040
TOLERANCES UNLESS OTHERWISE SPECIFIED:		APPLICATION SPEC 114-32259
0 PLC ±	1 PLC ±	WEIGHT -
2 PLC ±0.25	3 PLC ±	CUSTOMER DRAWING
4 PLC ±	ANGLES ±2°	SCALE 5:1
MATERIAL SEE NOTES	FINISH SEE NOTES	SHEET 1 OF 1

		NAME	
		AMPMODU 2mm SHROUDED HEADER, DUAL ROW, RIGHT ANGLE, Sn, TUBE	
SIZE A3	CAGE CODE 00779	DRAWING NO C-2842247	RESTRICTED TO -
CUSTOMER DRAWING		SCALE 5:1	SHEET 1 OF 1 REV A