

Features

- Low Loss
- Excellent High Side rejection
- Excellent Return Loss

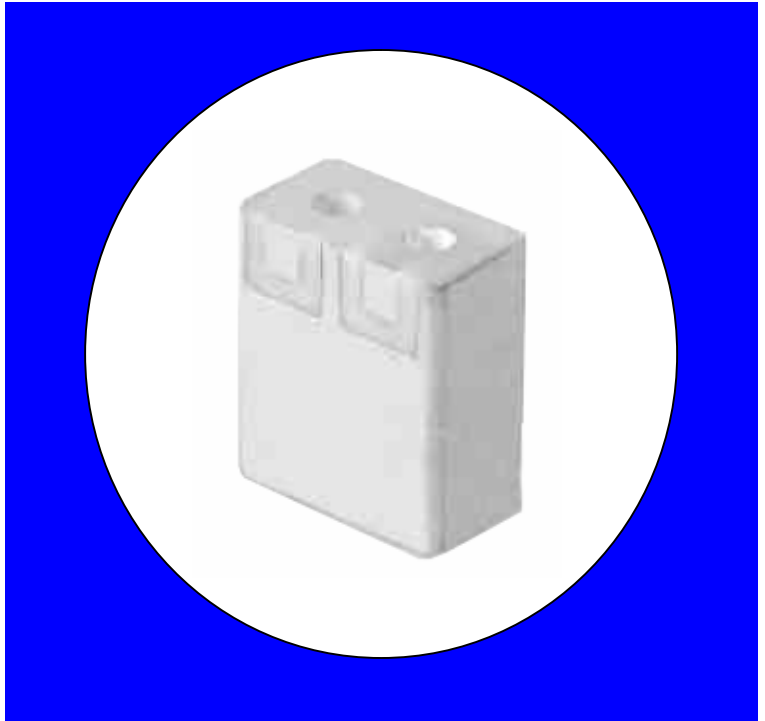
Description

Surface mount, silver (Ag) coated ceramic filter.

Weight: 1.7 grams typical

Material: Filter is composed of a ceramic block plated with Ag.

Filter complies with RoHS standards.



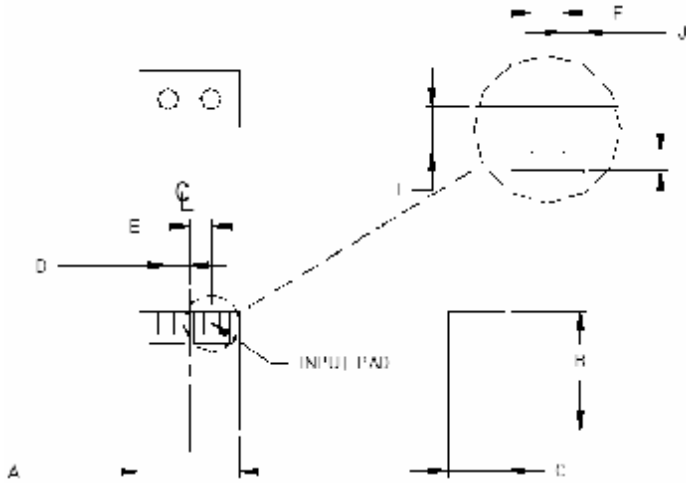
Electrical Specifications

| Parameter | Frequency (MHz) | Typical @ 25°C | Spec. @ 25°C | Spec @ -40°C to -85°C |
|-------------------------|-----------------|----------------|--------------|-----------------------|
| Passband Insertion Loss | 1565.4 – 1585.4 | -0.99 | -1.5 | -1.8 |
| Passband Ripple | 1664.4 – 1585.4 | 0.25 | 0.5 | 0.8 |
| Passband Return Loss | 1565.4 – 1585.4 | -19.6 | -10 | -10 |
| Attenuation: | 1500.4 | -14.8 | -12 | -10 |
| | 1525.4 | -9 | -7 | -5 |
| | 1625.4 | -16 | -15 | -13 |
| | 1650.4 | -36 | -30 | -28 |
| Power into any port | | 1 Watt max | | |

Note: Supplier shall test each filter to the critical electrical specifications of the above table. Any subsequent audits may deviate from in value due to measurement repeatability among different test systems. Such deviations shall not exceed the following limits:

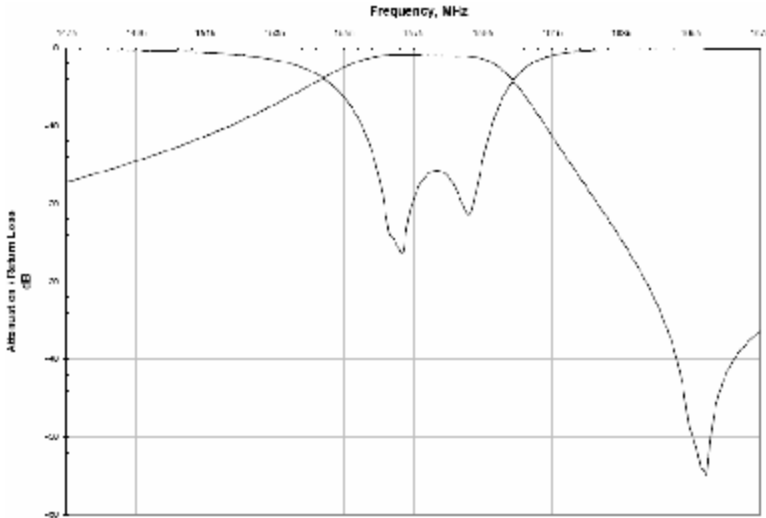
| Specification Allowance | |
|-------------------------|--------|
| Insertion Loss | 0.1 dB |
| Return Loss | 1.0 dB |
| Stopbands | 1.0 dB |

Mechanical Drawing

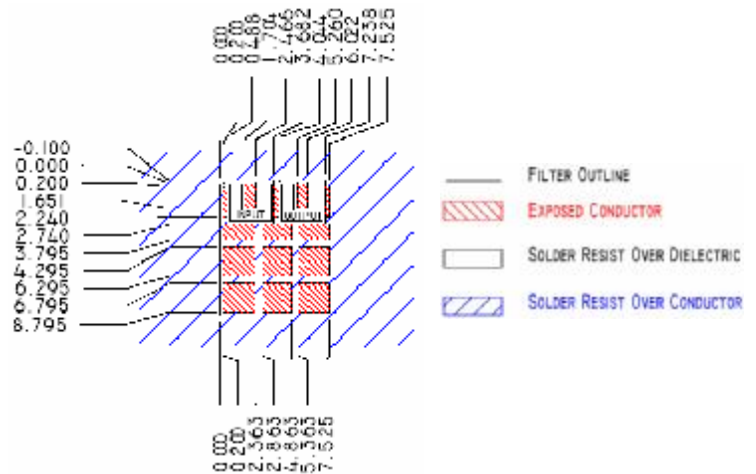


| Dim | Nominal (mm) | Tolerance (mm) +/- or max |
|-----|--------------|------------------------------|
| A | 7.899 | Max |
| B | 9.271 | Max |
| C | 4.496 | Max |
| D | 1.778 | 0.127 |
| E | 1.778 | 0.127 |
| F | 1.27 | 0.127 |
| G | 0.762 | 0.127 |
| I | 1.778 | 0.127 |
| J | 0.762 | 0.127 |

Electrical response



PCB Layout



Packaging and Marking

| DIMENSION | UNITS | SPECIFICATION |
|---------------|-------|---------------|
| REEL DIAMETER | mm | 330 |
| REEL WEIGHT | kg | 1.7 |
| REEL QUANTITY | ea. | 1000 Max |

