

4

3

2

1

THIS DRAWING IS UNPUBLISHED.

RELEASED FOR PUBLICATION

© COPYRIGHT

ALL RIGHTS RESERVED.

LOC DIST


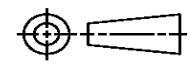
REVISIONS

P	LTR	DESCRIPTION	DATE	DWN	APVD

REPLACED BY OCEAN STYLE APPLICATOR PART NUMBER

FOR REPLACEMENT PARTS FOR APPLICATOR REFER TO ADDITIONAL PAGE(S). SPARE PARTS KIT (IF LISTED) WILL REMAIN AVAILABLE.

THE REPLACEMENT OCEAN STYLE APPLICATOR HAS THE SAME TERMINATOR/PRESS INTERFACE AS APPLICATOR

THIS DRAWING IS A CONTROLLED DOCUMENT.		DWN	 TE Connectivity			
DIMENSIONS:		CHK				
		APVD	NAME			
TOLERANCES UNLESS OTHERWISE SPECIFIED:		PRODUCT SPEC	APPLICATION SPEC			
0 PLC ± 1 PLC ± 2 PLC ± 3 PLC ± 4 PLC ± ANGLES ±		WEIGHT	SIZE	CAGE CODE	DRAWING NO	RESTRICTED TO
MATERIAL	FINISH		A3		C-	
		SCALE	SHEET	OF	REV	

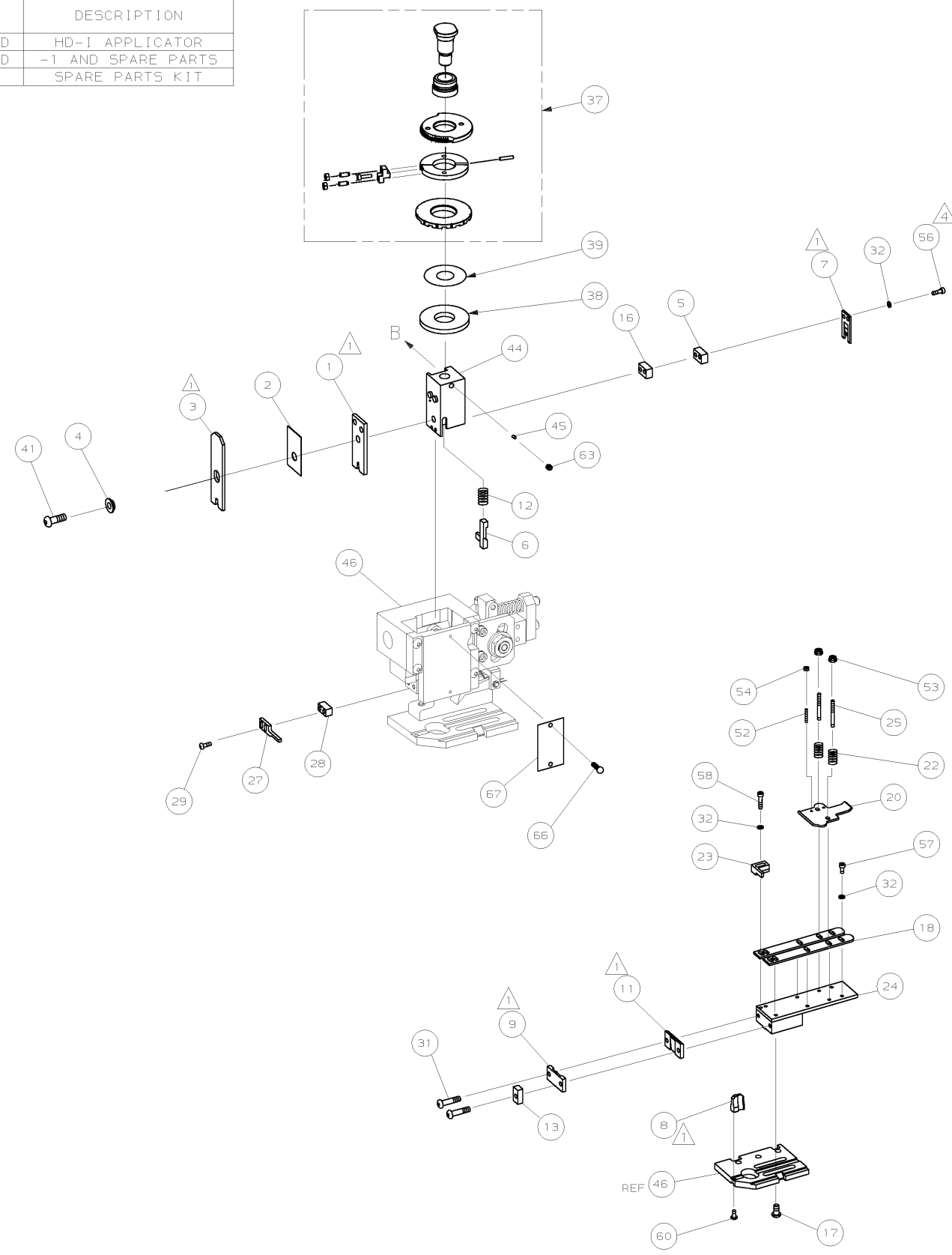
DRAWING MADE IN THIRD ANGLE PROJECTION

1529086 1529086

/home/eb003420/edmod

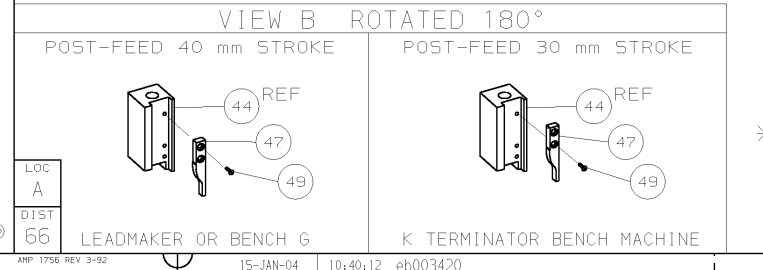
PART NUMBER	REV	FIRST USED	TERMINATOR	FEED TYPE	DESCRIPTION
1529086-1	A	-	BENCH & LEADMAKER	MECH POST FEED	HD-1 APPLICATOR
7-1529086-1	A	-	BENCH & LEADMAKER	MECH POST FEED	-1 AND SPARE PARTS
7-1529086-7	A	-	-	-	SPARE PARTS KIT

CRIMP DATA AMP TERMINAL AMP CRIMP SPECS			
TERMINAL NAME: .110 SRS MINIATURE FASTON RECEPTACLE			
CRIMP	SIZE	TYPE	RANGE
WIRE	1.78 [.070 IN]	F	24 - 20 AWG
INSUL	2.79 [.110 IN]	F	2.03-3.05 [.080-.120 IN]
WIRE STRIP LENGTH		APPL INSTRUCTION	
3.90-4.70 [.154-.185 IN]		408-8323 & 408-8490	
TERMINAL		FEED	
APPL SPEC 114-3118		16.89 [.665 IN]	
TERMINALS APPLIED			
150500	153213	-	-
150501	150568	-	-
150517	-	-	-
150545	-	-	-
150577	-	-	-
150587	-	-	-
150651	-	-	-
151304	-	-	-
WIRE SIZE	CRIMP HEIGHT	REF SETTING	
mm ² AWG	*	*	
20 AWG	0.89 ±0.05 [.035 ±.002 IN]	B5	
22 AWG	0.79 ±0.05 [.031 ±.002 IN]	C2	
24 AWG	0.74 ±0.05 [.029 ±.002 IN]	C6	



QTY	REQD	PER ASSY	PART NO	DESCRIPTION	ITEM NO
-	1	1	1529086	PRINT, APPLICATOR LOG SHEET	73
-	1	1	1338705-4	DOCUMENTATION PACKAGE	72
-	-	-	-	-	71
-	-	-	-	-	70
-	-	-	-	-	69
-	-	-	-	-	68
-	1	1	461264-5	PLATE, IDENTIFICATION	67
-	2	2	21017-2	SCR,DRIVE (#2X.19) ID PLATE	66
-	-	-	-	-	65
-	-	-	-	-	64
-	1	1	3-18031-0	SCR,SKT SET (M6X6) RAM	63
-	-	-	-	-	62
-	-	-	-	-	61
-	1	1	18024-7	SCR,BHC (M4X10) ANVIL	60
-	-	-	-	-	59
-	2	2	1-18023-3	SCR,SHC (M4X16) HOLD DOWN	58
-	5	5	18023-9	SCR,SHC (M4X6) STRIP GUIDE	57
-	2	2	1-18023-2	SCR,SHC (M4X12) SLUG BLADE	56
-	-	-	-	-	55
-	2	2	18029-1	NUT,HEX (M3) DRAG	54
-	2	2	986965-1	NUT,HEX SL (M4) DRAG STUD	53
-	2	2	2-18032-2	SCR,SKT SET (M3X10) DRAG	52
-	-	-	-	-	51
-	-	-	-	-	50
-	1	1	18024-3	SCR,BHC (M3X10) CAM	49
-	-	-	-	-	48
-	1	1	1338676-1	CAM, POST-FEED 30 & 40 mm ST	47
-	1	1	1338662-1	APPLICATOR, BASIC (SUBASSY)	46
-	1	1	690191-1	PLUG, NYLON	45
-	1	1	1320998-1	RAM	44
-	-	-	-	-	43
-	-	-	-	-	42
-	1	1	2-18024-6	SCREW,BHC (M8X25) CRIMPER	41
-	-	-	-	-	40
-	1	1	690125-1	SHIM SUBASSY	39
-	1	1	469367-7	SPACER, FINE ADJUST	38
-	1	1	879103-2	FINE ADJUST HEAD SUBASSY	37
-	-	-	-	-	36
-	-	-	-	-	35
-	-	-	-	-	34
-	-	-	-	-	33
-	9	9	18025-2	WASHER, LOCK (M4) SHEAR BL	32
-	2	2	1-18024-0	SCR,BHC (M4X20) SHEAR PL	31
-	-	-	-	-	30
-	2	2	18024-8	SCR,BHC (M4X12) STRIPPER	29
-	1	1	3-690451-2	SPACER, STRIPPER	28
-	1	1	240639-1	STRIPPER	27
-	-	-	-	-	26
-	2	2	1320906-1	DRAG, STUD	25
-	1	1	1320995-1	STRIP GUIDE	24
-	1	1	240825-4	PLATE, STRIP HOLD DOWN	23
-	2	2	4-22281-1	SPRING, DRAG	22
-	-	-	-	-	21
-	1	1	1338665-1	DRAG, STOCK	20
-	-	-	-	-	19
-	2	2	1338663-3	GUIDE, LOWER STRIP	18
-	4	4	1-18024-8	SCR,BHC (M6X12) STRIP GD PL	17
-	1	1	1338708-1	SPACER, SLUG BLADE	16
-	-	-	-	-	15
-	-	-	-	-	14
-	1	1	1-690481-5	SPACER, HOLD DOWN	13
-	1	1	23846-1	SPRING, HOLD DOWN	12
-	1	1	240644-1	PLATE, REAR SHEAR	11
-	-	-	-	-	10
-	1	1	1-690495-2	PLATE, FRONT SHEAR	9
-	1	2	1333215-5	ANVIL	8
-	1	1	690474-6	BLADE, SLUG	7
-	1	1	455892-7	HOLD DOWN, TERMINAL	6
-	1	1	3-240641-3	SPACER, SLUG BLADE	5
-	1	1	238009-1	SPACER, BLOCK CRIMPER	4
-	1	2	1-456134-5	CRIMPER, INSULATION	3
-	1	1	455888-7	SPACER, CRIMPER	2
-	1	2	1-456404-8	CRIMPER, WIRE	1

- 1. RECOMMENDED SPARE PARTS.
- 2. GREASE RAM, CAM, CAM FOLLOWER AND FEED ROD LIGHTLY.
- 3. LUBRICATE DAILY PER THE APPLICATOR INSTRUCTION SHEET SUPPLIED WITH THE APPLICATOR.
- 4. CUT TO LENGTH AT ASSEMBLY.



* WARNING:
ON INSTALLATION, SET WIRE DISC TO LARGEST WIRE SIZE SETTING.
USE OF SETTINGS BELOW MIN REQ'D CRIMP HEIGHT SETTING WILL
CAUSE DAMAGE TO CRIMP TOOLING.

QTY REQD PER ASSY		PARTS LIST	
MATL	HT TR	FIN	
DR L.LOFTHOUSE	01DEC03	APP F.BACKHURST	01DEC03
CHK -	REL 15-01-04	M.CLIFFORD	
NAME FINE ADJ END FD HD-1 APPL		MACHINE REF HD-1 APPL	
SCALE -	DWG NO 1529086	SHEET 1 of 1	REV A
CASE CODE 00779	CUSTOMER AND ASSEMBLY DRAWING		RESTRICTED TO

THIS DRAWING IS A CONTROLLED DOCUMENT

LAYOUT L1339521

SET UP GAGE 458638-3

20

RELEASED FOR PUBLICATION BY AMP INCORPORATED. ALL RIGHTS RESERVED.

THIS DRAWING IS UNRELEASABLE

AMP 1756 REV 3-92

1529086

A

B

C

D