



### Electrical Specifications

- Center Frequency: 640 MHz
- 3 dB Bandwidth: 140 MHz
- 1 dB Passband: 580-700 MHz
- Passband: 349.5-375.5 MHz
- Insertion Loss at Center: 0.5 dB Max
- Phase Linearity:  $\leq \pm 7.0^\circ$
- Ripple:  $\leq \pm 0.3$  dB
- VSWR at 1dB Passband: 1.5:1 Max
- Rejection: 30 dB @ DC-500 MHz  
30 dB @ 800-1000 MHz
- Power Handling: 15 Watts Max

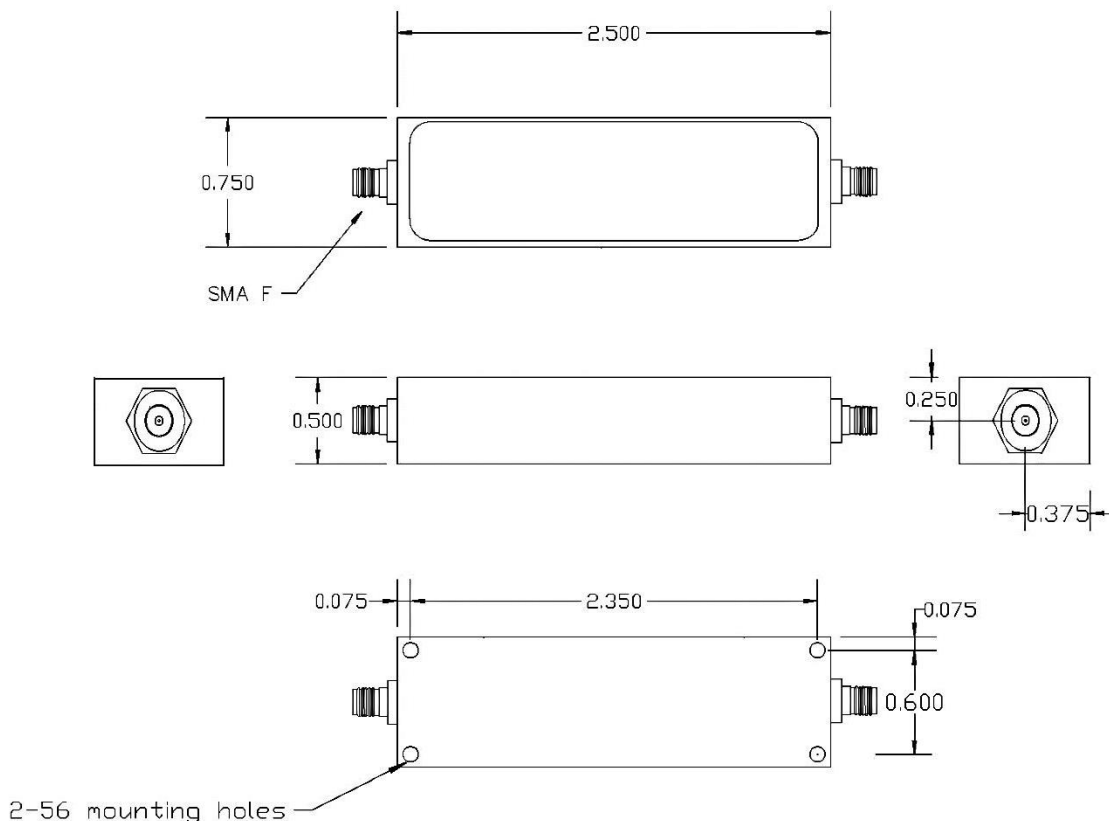
### Mechanical

- Connector Type: SMA (F)
- Dimensions: 2.5 x 0.75 x 0.50 Inches

### Environmental

- Operating Temperature: -45 to +85° C
- Storage Temperature: -65 to +95° C

### Outline Drawing:





# 640 MHz Cavity Band Pass Filter



**ANATECH ELECTRONICS INC**  
RF & Microwave Filters & Products

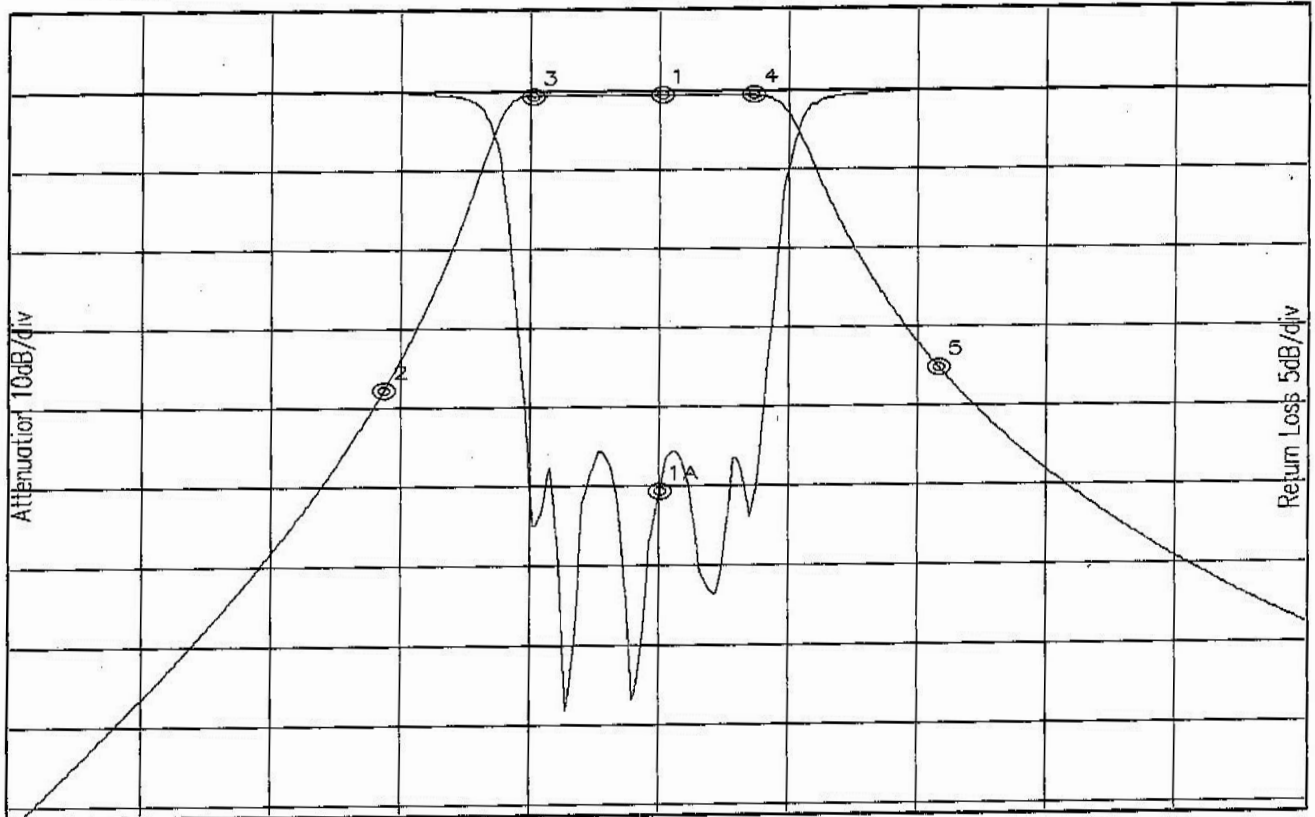
**Part Number: AE640B10908**

## Response Plot:

A2/2.lad

SEP 12, 2011

Attenuation/Return Loss



Attenuation Start: 300.0MHz Stop: 1000.0MHz

Return Loss Start: 300.0MHz Stop: 1000.0MHz

Marker 1 Freq 650.56MHz Atten -0.395dB  
 Marker 2 Freq 500.16MHz Atten -37.510dB  
 Marker 3 Freq 580.45MHz Atten -0.594dB  
 Marker 4 Freq 700.32MHz Atten -0.527dB  
 Marker 5 Freq 800.96MHz Atten -35.052dB

Marker 1A Freq 649.43MHz Ret Loss -25.243dB



# 640 MHz Cavity Band Pass Filter



**ANATECH ELECTRONICS INC**  
RF & Microwave Filters & Products

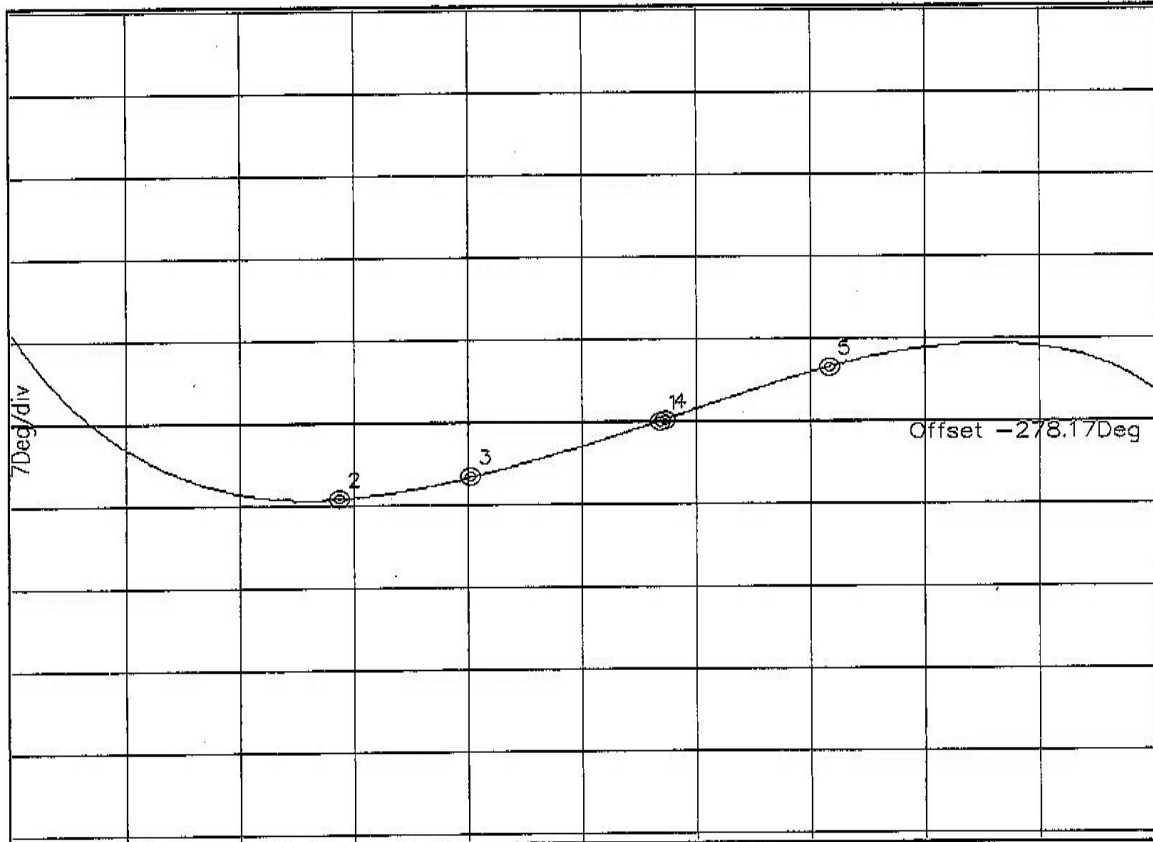
**Part Number: AE640B10908**

## Phase:

A2/2.lad

SEP 12, 2011

Phase



Phase Start: 580.0MHz Stop: 700.0MHz

- Marker 1 Freq 648.04MHz Phase 0.049Deg
- Marker 2 Freq 614.31MHz Phase -6.410Deg
- Marker 3 Freq 628.07MHz Phase -4.616Deg
- Marker 4 Freq 648.62MHz Phase 0.206Deg
- Marker 5 Freq 665.88MHz Phase 4.611Deg