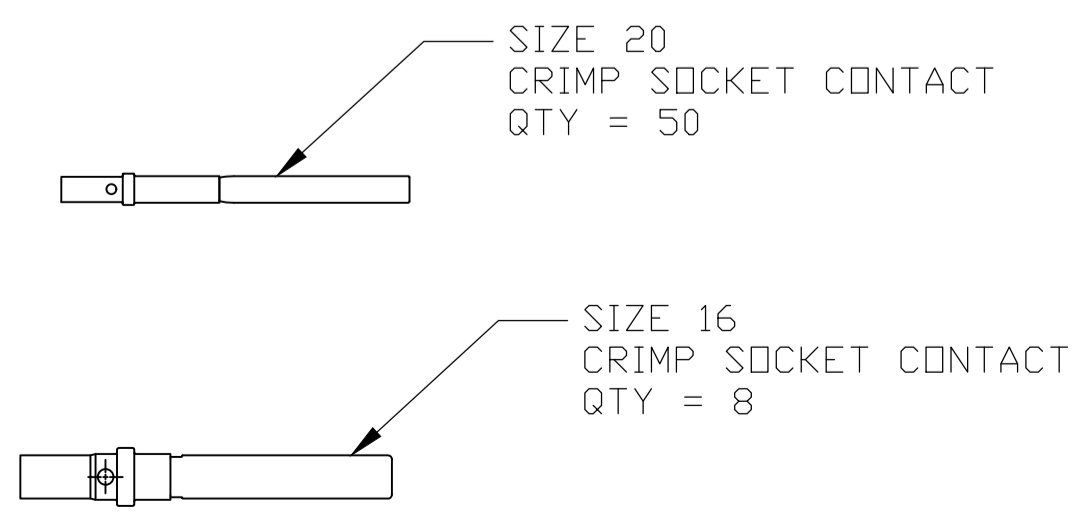
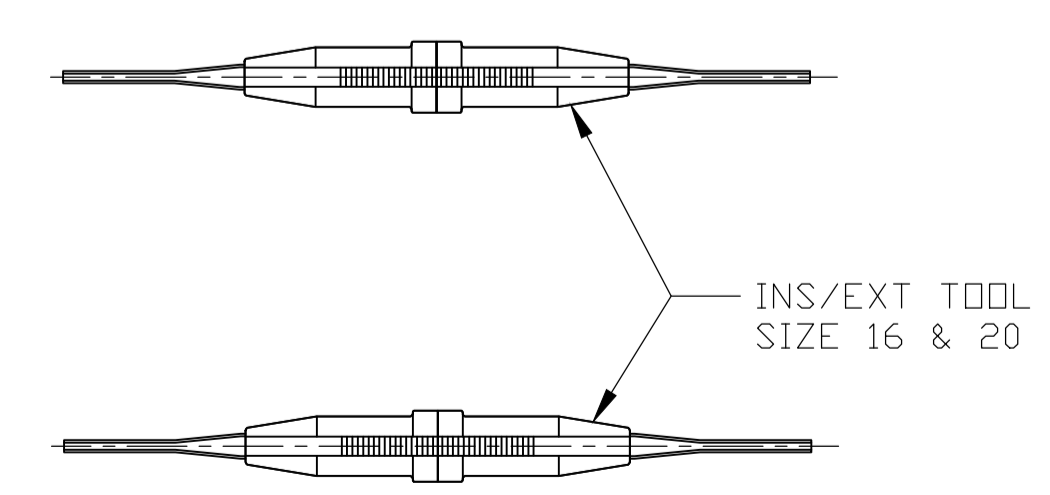
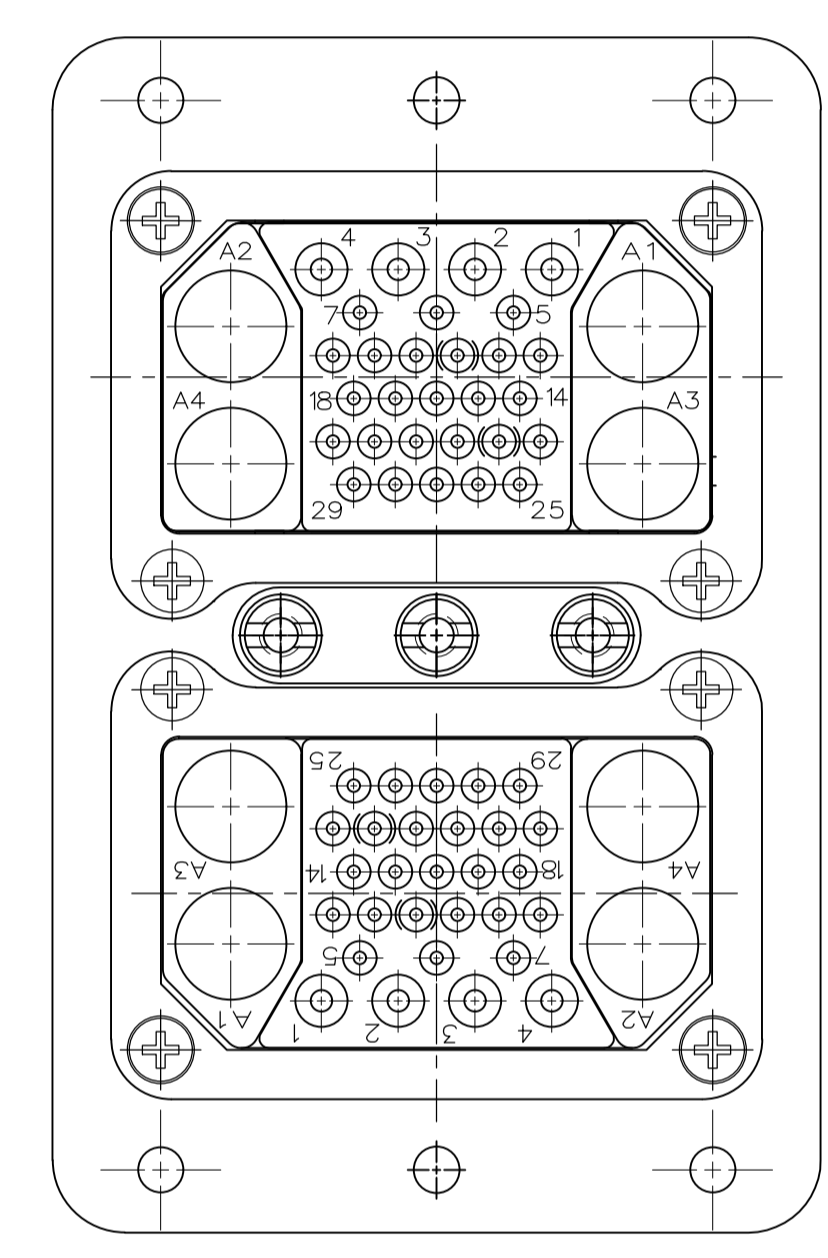
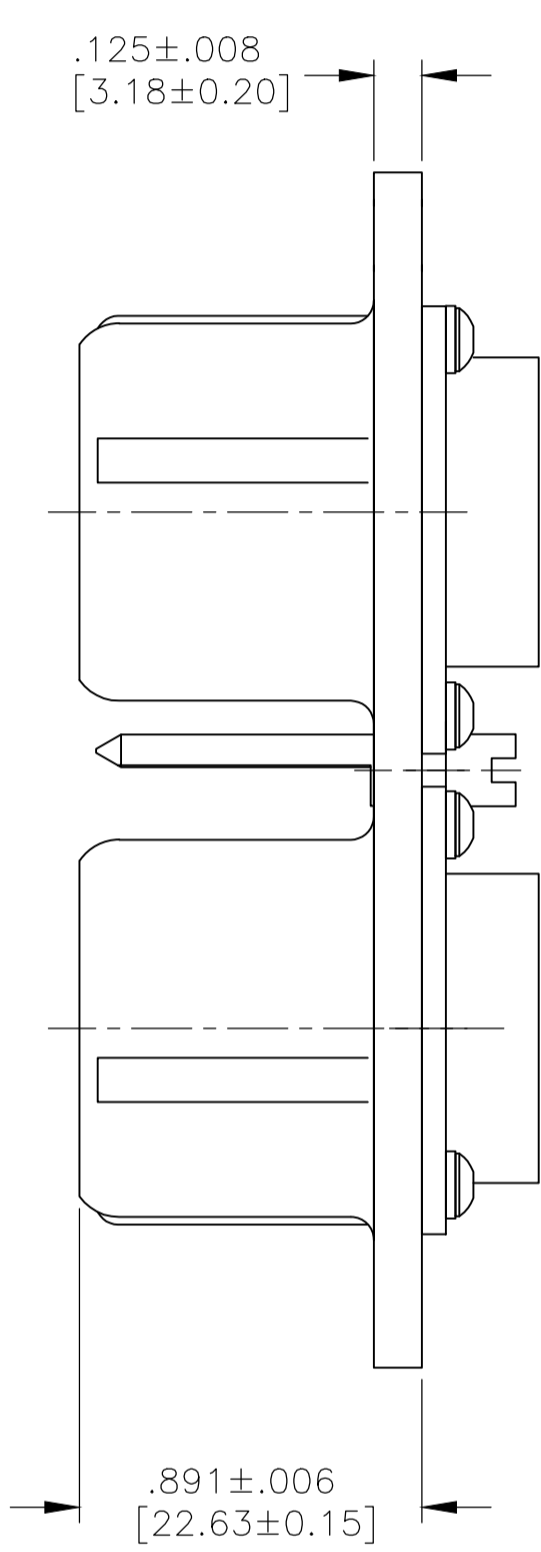
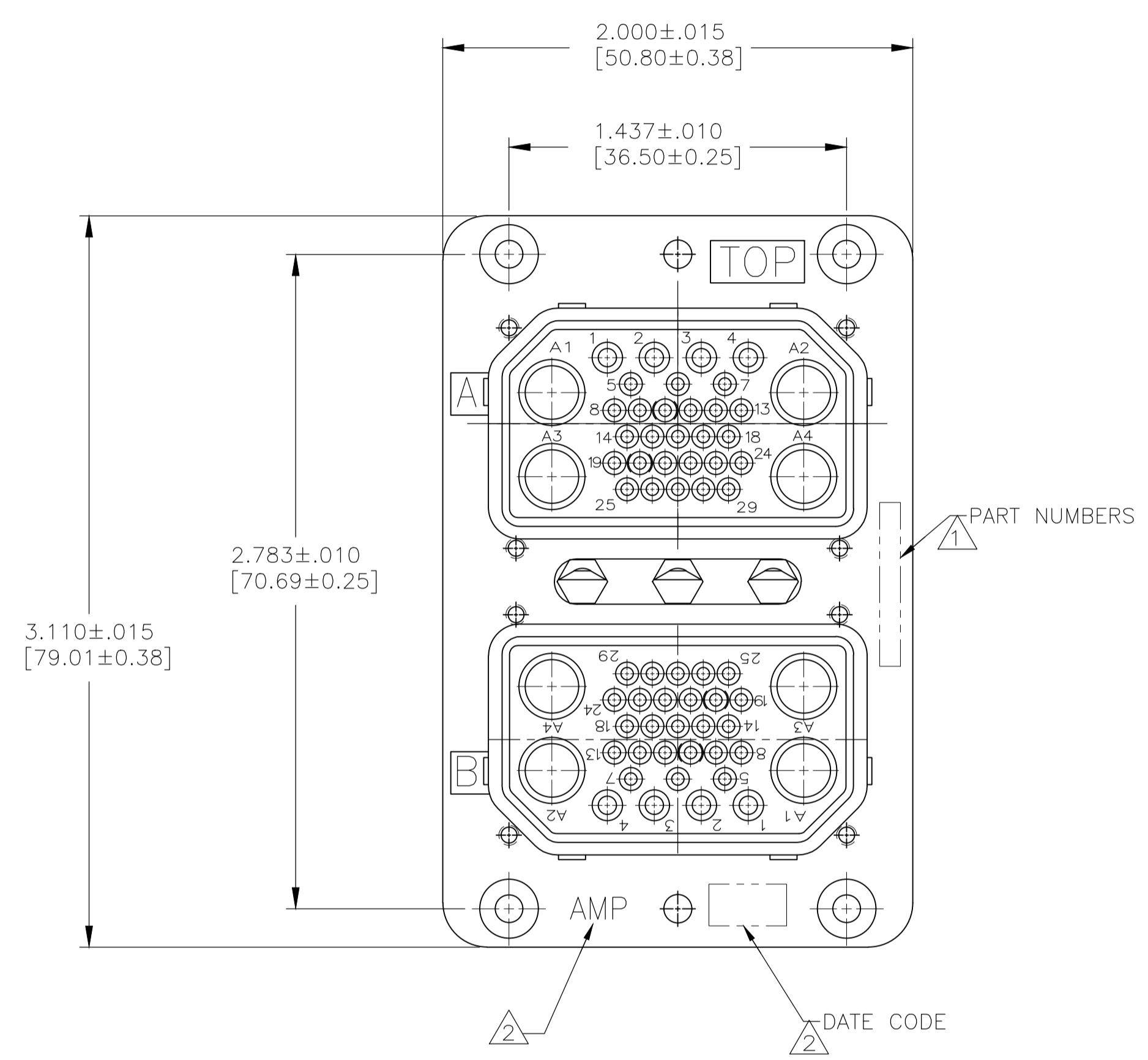


REVISIONS					
P	LTR	DESCRIPTION	DATE	OWN	APPRO
A1	REV PER ECO	20-012433	9-3-20	CT	RL

- 1. TE PART NO. AND DESCRIPTIVE PART NO. MARKED IS THESE AREAS.
- 2. "AMP" AND DATE CODE MARKED IN THIS AREA.
- 3. KEYING ASSEMBLED IN THE "01" POSITION.
- 4. MATERIAL AND FINISH:  
SHELL: DIE CAST ALUMINUM ALLOY PER SPEC QQ-A-591.  
STANDARD FINISH: CADMIUM PLATE PER QQ-P-416, TYPE I,  
CLASS 2 YELLOW CHROMATE CONVERSION.  
INSERT RETENTION PLATE: ALUMINUM ALLOY, BLUE ANODIZE  
PER MIL-A-8625.  
SCREWS AND WASHERS: STAINLESS STEEL, PASSIVATED.  
POLARIZING POSTS: STAINLESS STEEL, PASSIVATED.  
POLARIZING NUTS: BRASS, CADMIUM PLATED.



1218528-1  
PART NUMBER

THIS DRAWING IS A CONTROLLED DOCUMENT.		DIN C.C.THOMAS 3-13-14		D.FABRY 3-13-14		D.FABRY 3-13-14		D.FABRY 3-13-14		D.FABRY 3-13-14		D.FABRY 3-13-14		D.FABRY 3-13-14	
DIMENSIONS: INCHES		TOLERANCES UNLESS OTHERWISE SPECIFIED:		0. PLC ± -		1. PLC ± -		2. PLC ± -		3. PLC ± .005 [0.13]		4. PLC ± -		ANGLES ± -	
MATERIAL		FINISH		WEIGHT		0.000000		A1 00779		C=1218528		SCALE		2:1	
CUSTOMER DRAWING		SCALE		SHEET		1 OF 1		REV		A1		RESTRICTED TO		-	