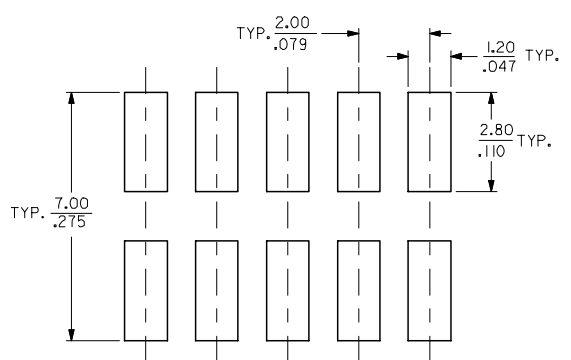
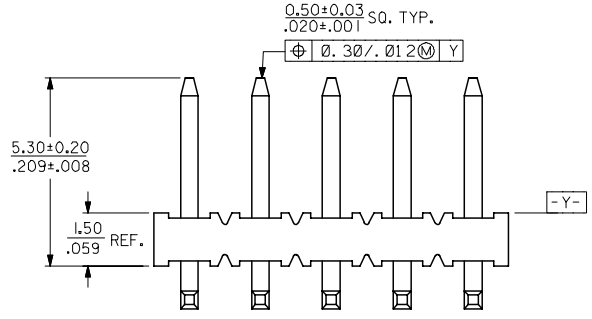
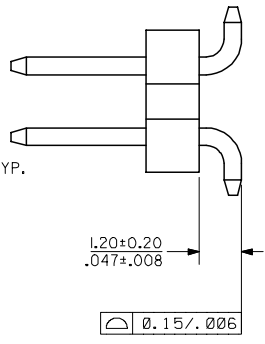
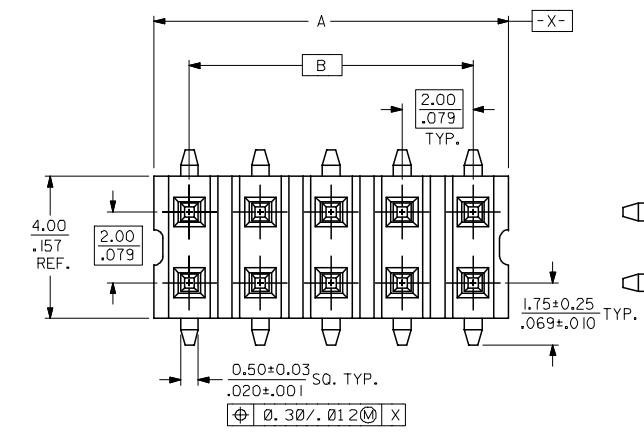


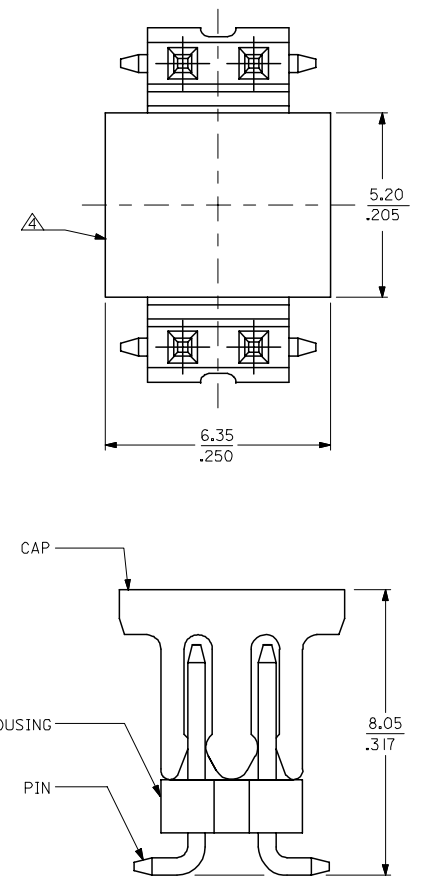
10 9 8 7 6 5 4 3 2 1

F
E
D
C
B
A



RECOMMENDED SOLDER PAD DESIGN

| CKT SIZE | DIM A | | DIM B | |
|----------|-------|-------|-------|-------|
| | MM | INCH | MM | INCH |
| 4 | 3.90 | .154 | 2.00 | .079 |
| 6 | 5.90 | .232 | 4.00 | .157 |
| 8 | 7.90 | .311 | 6.00 | .236 |
| 10 | 9.90 | .390 | 8.00 | .315 |
| 12 | 11.90 | .468 | 10.00 | .394 |
| 14 | 13.90 | .547 | 12.00 | .472 |
| 16 | 15.90 | .626 | 14.00 | .551 |
| 18 | 17.90 | .705 | 16.00 | .630 |
| 20 | 19.90 | .783 | 18.00 | .709 |
| 22 | 21.90 | .862 | 20.00 | .787 |
| 24 | 23.90 | .941 | 22.00 | .866 |
| 26 | 25.90 | 1.020 | 24.00 | .945 |
| 28 | 27.90 | 1.098 | 26.00 | 1.024 |
| 30 | 29.90 | 1.177 | 28.00 | 1.102 |
| 32 | 31.90 | 1.256 | 30.00 | 1.181 |
| 34 | 33.90 | 1.334 | 32.00 | 1.260 |
| 36 | 35.90 | 1.413 | 34.00 | 1.338 |
| 38 | 37.90 | 1.492 | 36.00 | 1.417 |
| 40 | 39.90 | 1.571 | 38.00 | 1.496 |
| 42 | 41.90 | 1.650 | 40.00 | 1.575 |
| 44 | 43.90 | 1.728 | 42.00 | 1.653 |
| 46 | 45.90 | 1.807 | 44.00 | 1.732 |
| 48 | 47.90 | 1.886 | 46.00 | 1.811 |
| 50 | 49.90 | 1.965 | 48.00 | 1.890 |



- NOTES :
- FOR ILLUSTRATION PURPOSES, DRAWING SHOWS PART WITH IO CIRCUIT SIZE.
 - MATERIAL: HOUSING & CAP: NYLON 4/6 GLASS FILLED UL 94V-0, SUITABLE FOR SURFACE-MOUNT SOLDERING PROCESS. COLOR BLACK
PINS: 0.50MM SQ. PHOSPHOR BRONZE
 - PLATING: 076um/30uin MIN. GOLD PLATE AT CONTACT AREA AND 1.90um/75uin MIN. TIN/LEAD PLATE AT SOLDER TAIL, BOTH OVER 1.27um/50uin MIN. NICKEL UNDERPLATE.
- ⚠ POSITION OF CAP TO BE LOCATED AT CENTER OF DIMENSION 'A' REGARDLESS OF CIRCUIT SIZE.
- TOP SURFACE OF CAP TO BE FLAT FOR THE PURPOSE OF PICK-&-PLACE BY VACUUM SUCTION NOZZLE.
 - ASSEMBLY PART TO BE PACKAGED IN TUBE OR TAPE & REEL, SEE SHEET 2, 3 & 4 FOR PART NUMBERS AND PACKAGING DETAILS.
 - PRODUCT SPECIFICATION PS-87049 APPLIES.
- ⚠ PART TO BE PACKED IN TRAY ONLY.

| | | | | | | | | | | |
|---|-------------------------------|--|--------------------------------|--------------------------|---|--------------|------------------------|------------------------|---|--|
| UPDATE REVISION EC NO: S2005-0714 2005/10/19 DRWN:KSEE CHKD:BLW 2005/10/19 APPR:PTLIM 2005/11/05 | QUALITY SYMBOLS ▽=0 ▽=0 | GENERAL TOLERANCES (UNLESS SPECIFIED) | | DIMENSION STYLE MM/IN | | SCALE NTS | DESIGN UNITS METRIC | THIRD ANGLE PROJECTION | | |
| | | 4 PLACES ± --- ± --- 3 PLACES ± --- ± .008 2 PLACES ± 0.2 ± --- 1 PLACE ± --- ± --- ANGULAR ± ---° | DRAWN BY JWAN 1994/04/24 | DATE 1994/04/24 | TITLE SALES DRAWING MGRID, 2MM DUAL ROW HDR. SMT | | MOLEX INCORPORATED | | SHEET NO. 1 OF 4 | |
| | | DRAFT WHERE APPLICABLE MUST REMAIN WITHIN DIMENSIONS | SEE TABLE | | DOCUMENT NO. SD-87267-***5 | | MATERIAL NO. | | THIS DRAWING CONTAINS INFORMATION THAT IS PROPRIETARY TO MOLEX INCORPORATED AND SHOULD NOT BE USED WITHOUT WRITTEN PERMISSION | |
| | | A6 | SIZE A3 | | MOLEX | | MOLEX INCORPORATED | | MOLEX INCORPORATED | |

9 8 7 6 5 4 3 2 1

| | 10 | 9 | 8 | 7 | 6 | 5 | 4 | 3 | 2 | 1 | |
|----------|----------|-------------|-------------|---|-------------|----------|---------|----------|---------|---------------|-----------------------|
| CKT SIZE | ASSY No. | | ASSY No. | | ASSY No. | DIM "Bo" | DIM "F" | DIM "So" | DIM "W" | EMBOSSED TYPE | T&R QUANTITY PER REEL |
| F | 4 | 87267-04 I5 | 87267-04 65 | | 87267-04 75 | 5.40 | 11.50 | - | 24.00 | C | 500 |
| | 6 | 87267-06 I5 | 87267-06 65 | | NA | NA | NA | NA | NA | NA | NA |
| | 8 | 87267-08 I5 | 87267-08 65 | | 87267-08 75 | NA | NA | NA | NA | NA | NA |
| | 10 | 87267-10 I5 | 87267-10 65 | | 87267-10 75 | 10.20 | 11.50 | - | 24.00 | A | 500 |
| | 12 | 87267-12 I5 | 87267-12 65 | | 87267-12 75 | NA | NA | - | NA | NA | NA |
| | 14 | 87267-14 I5 | 87267-14 65 | | 87267-14 75 | 14.20 | 11.50 | - | 24.00 | A | 600 |
| | 16 | 87267-16 I5 | 87267-16 65 | | 87267-16 75 | 16.20 | 14.20 | 28.40 | 32.00 | B | 550 |
| | 18 | 87267-18 I5 | 87267-18 65 | | 87267-18 75 | NA | NA | NA | NA | NA | NA |
| | 20 | 87267-20 I5 | 87267-20 65 | | 87267-20 75 | 20.20 | 14.20 | 28.40 | 32.00 | B | 500 |
| E | 22 | 87267-22 I5 | 87267-22 65 | | 87267-22 75 | NA | NA | NA | NA | NA | NA |
| | 24 | 87267-24 I5 | 87267-24 65 | | 87267-24 75 | 24.20 | 20.20 | 40.40 | 44.00 | B | 600 |
| | 26 | 87267-26 I5 | 87267-26 65 | | 87267-26 75 | NA | NA | NA | NA | NA | NA |
| | 28 | 87267-28 I5 | 87267-28 65 | | 87267-28 75 | NA | NA | NA | NA | NA | NA |
| | 30 | 87267-30 I5 | 87267-30 65 | | 87267-30 75 | 30.20 | 20.20 | 40.40 | 44.00 | B | 600 |
| | 32 | 87267-32 I5 | 87267-32 65 | | 87267-32 75 | NA | NA | NA | NA | NA | NA |
| | 34 | 87267-34 I5 | 87267-34 65 | | 87267-34 75 | NA | NA | NA | NA | NA | NA |
| | 36 | 87267-36 I5 | 87267-36 65 | | 87267-36 75 | NA | NA | NA | NA | NA | NA |
| | 38 | 87267-38 I5 | 87267-38 65 | | 87267-38 75 | NA | NA | NA | NA | NA | NA |
| | 40 | 87267-40 I5 | 87267-40 65 | | 87267-40 75 | 40.20 | 26.20 | 52.40 | 56.00 | B | 600 |
| D | 42 | 87267-42 I5 | 87267-42 65 | | NA | NA | NA | NA | NA | NA | NA |
| | 44 | 87267-44 I5 | 87267-44 65 | | NA | NA | NA | NA | NA | NA | NA |
| | 46 | 87267-46 I5 | 87267-46 65 | | NA | NA | NA | NA | NA | NA | NA |
| | 48 | 87267-48 I5 | 87267-48 65 | | NA | NA | NA | NA | NA | NA | NA |
| | 50 | 87267-50 I5 | 87267-50 65 | | NA | NA | NA | NA | NA | NA | NA |

ASSY PART NUMBER LEGEND :

87267 - * * * 5
 CKT SIZE

— CAP & PACKAGING OPTION

- 1 -- WITHOUT CAP WITH TUBE PACKAGING (EXCEPT FOR 4 CKT, SEE NOTE 8)
- 6 -- WITH CAP WITH TUBE PACKAGING
- 7 -- WITH CAP WITH TAPE & REEL PACKAGING

| UPDATE REVISION EC NO: S2005-0714 DRWN:KSEE CHKD:BLW APPR:PTLIM | 2005/10/19 2005/10/19 2005/11/05 | DESCRIPTION REV | QUALITY SYMBOLS = 0 = 0 | GENERAL TOLERANCES (UNLESS SPECIFIED) <table border="1"> <tr> <th></th> <th>MM</th> <th>INCH</th> </tr> <tr> <td>4 PLACES</td> <td>± ---</td> <td>± ---</td> </tr> <tr> <td>3 PLACES</td> <td>± ---</td> <td>± .008</td> </tr> <tr> <td>2 PLACES</td> <td>± 0.2</td> <td>± ---</td> </tr> <tr> <td>1 PLACE</td> <td>± ---</td> <td>± ---</td> </tr> <tr> <td colspan="3">ANGULAR ± ---°</td> </tr> </table> | | MM | INCH | 4 PLACES | ± --- | ± --- | 3 PLACES | ± --- | ± .008 | 2 PLACES | ± 0.2 | ± --- | 1 PLACE | ± --- | ± --- | ANGULAR ± ---° | | | DIMENSION STYLE MM/IN DRAWN BY DATE JWAN 1995/04/24 CHECKED BY DATE SKTOH 1995/04/26 APPROVED BY DATE ROY 1995/04/27 | SCALE NTS DESIGN UNITS METRIC THIRD ANGLE PROJECTION | TITLE SALES DRAWING MGRID, 2MM DUAL ROW HDR. SMT | MATERIAL NO. SEE TABLE DOCUMENT NO. SD-87267-***5 SHEET NO. 2 OF 4 |
|--|--|--------------------|-------------------------------|--|--------|----|------|----------|-------|-------|----------|-------|--------|----------|-------|-------|---------|-------|-------|----------------|--|--|---|--|---|---|
| | | | | MM | INCH | | | | | | | | | | | | | | | | | | | | | |
| | | | 4 PLACES | ± --- | ± --- | | | | | | | | | | | | | | | | | | | | | |
| | | | 3 PLACES | ± --- | ± .008 | | | | | | | | | | | | | | | | | | | | | |
| 2 PLACES | ± 0.2 | ± --- | | | | | | | | | | | | | | | | | | | | | | | | |
| 1 PLACE | ± --- | ± --- | | | | | | | | | | | | | | | | | | | | | | | | |
| ANGULAR ± ---° | | | | | | | | | | | | | | | | | | | | | | | | | | |
| DRAFT WHERE APPLICABLE MUST REMAIN WITHIN DIMENSIONS | | | | MOLEX INCORPORATED | | | | | | | | | | | | | | | | | | | | | | |
| THIS DRAWING CONTAINS INFORMATION THAT IS PROPRIETARY TO MOLEX INCORPORATED AND SHOULD NOT BE USED WITHOUT WRITTEN PERMISSION | | | | | | | | | | | | | | | | | | | | | | | | | | |
| A6 | | | | | | | | | | | | | | | | | | | | | | | | | | |

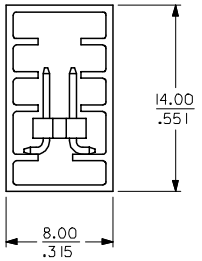
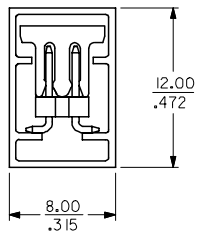
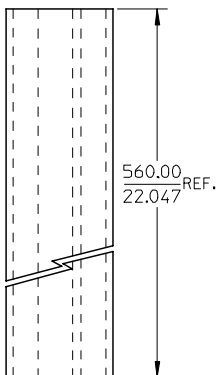
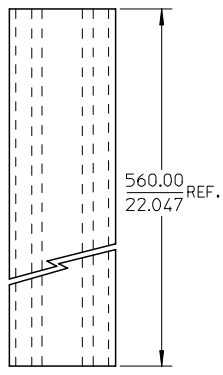
10 9 8 7 6 5 4 3 2 1

F
E
D
C
B
A

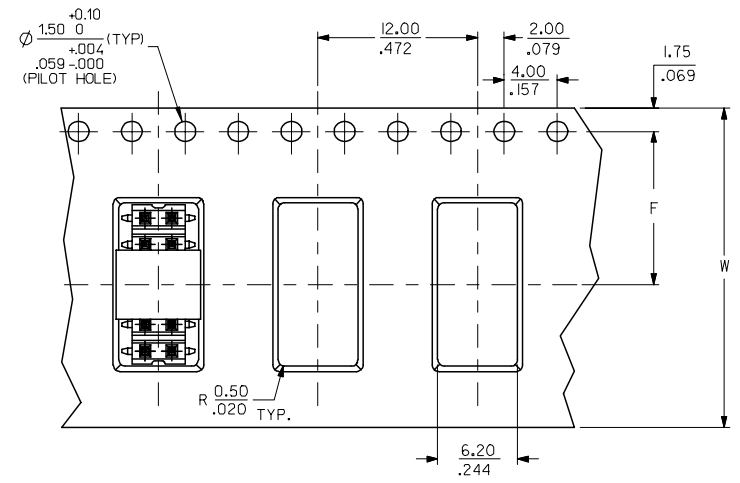
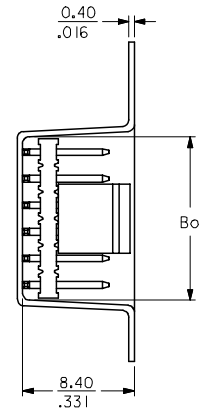
F
E
D
C
B
A

WITH CAP
TUBE PACKAGING

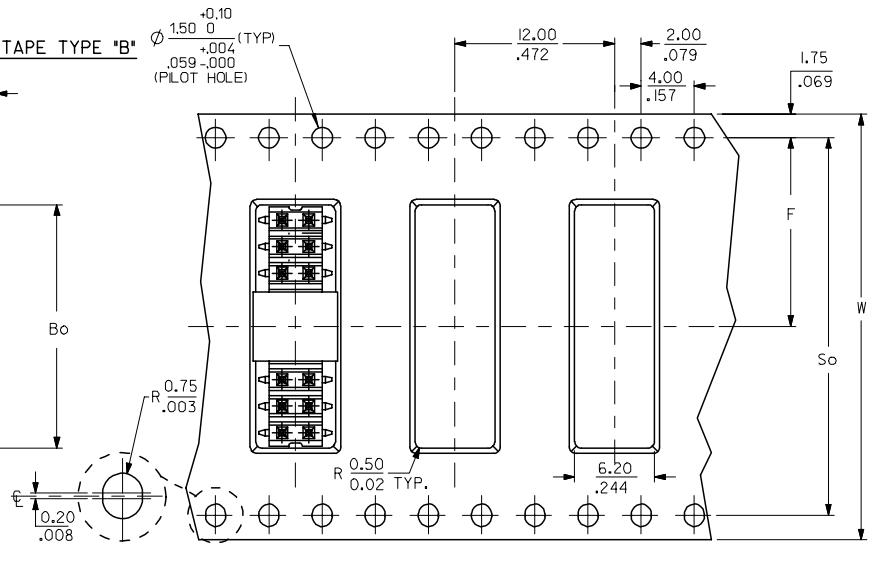
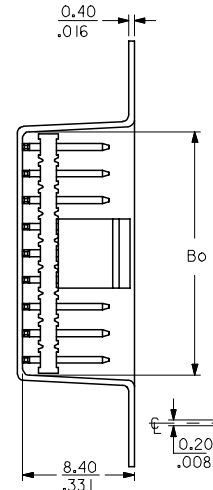
WITHOUT CAP
TUBE PACKAGING



EMBOSSED CARRIER TAPE TYPE "A"



EMBOSSED CARRIER TAPE TYPE "B"



| | | |
|-------------------|-------------|------------|
| UPDATE REVISION | 2005/10/19 | 2005/11/05 |
| EC NO: S2005-0714 | 2005/10/19 | 2005/11/05 |
| DRWN:KSEE | 2005/10/19 | |
| CHKD:BLW | | |
| APPR:PTLIM | | |
| REV | DESCRIPTION | |
| A6 | | |

| | |
|-----------------|-----|
| QUALITY SYMBOLS | ▽=0 |
| | ∇=0 |

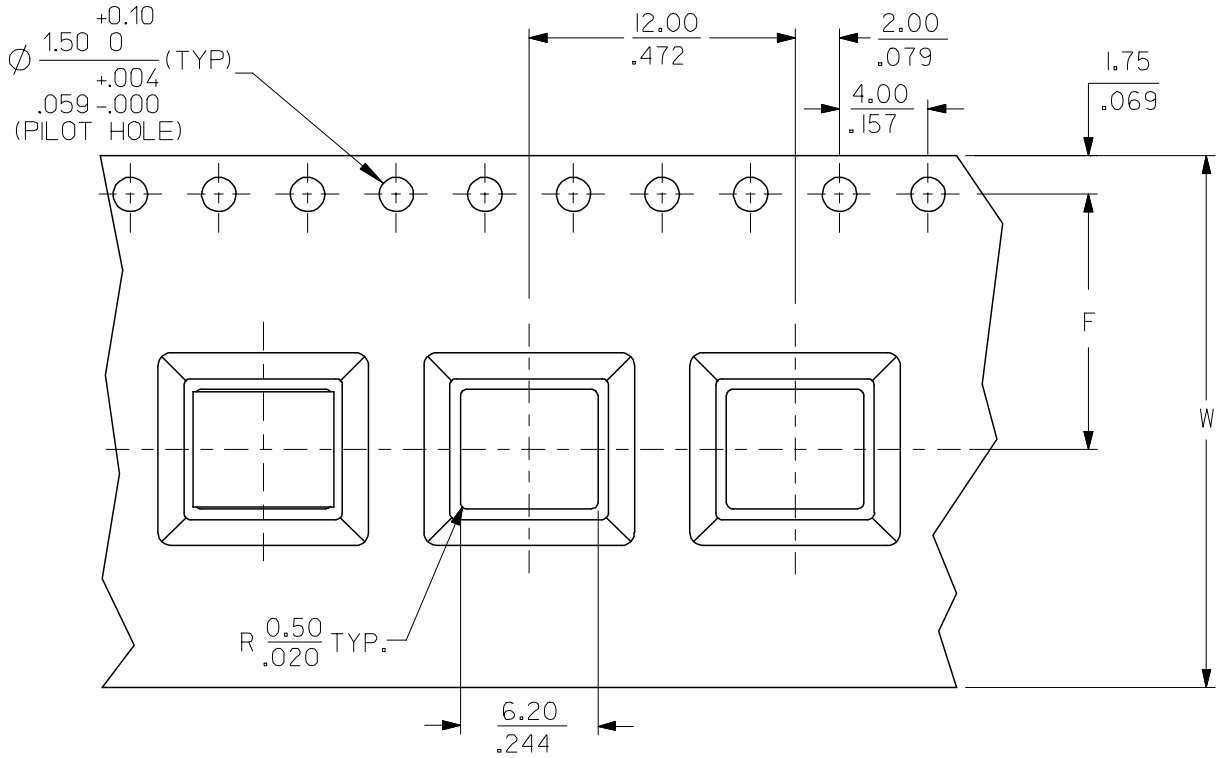
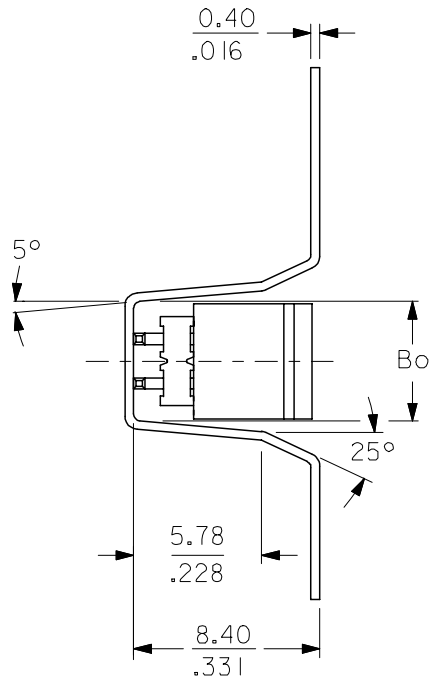
| | | |
|--|--------|--------|
| GENERAL TOLERANCES (UNLESS SPECIFIED) | mm | INCH |
| 4 PLACES | ± --- | ± --- |
| 3 PLACES | ± --- | ± .008 |
| 2 PLACES | ± 0.2 | ± --- |
| 1 PLACE | ± --- | ± --- |
| ANGULAR | ± ---° | |
| DRAFT WHERE APPLICABLE MUST REMAIN WITHIN DIMENSIONS | | |

| | | | | |
|-----------------|---|------------------------------|--------------|------------------------|
| DIMENSION STYLE | | SCALE | DESIGN UNITS | THIRD ANGLE PROJECTION |
| MM/IN | | NTS | METRIC | |
| DRAWN BY | DATE | TITLE | | |
| JWAN | 1995/04/24 | SALES DRAWING | | |
| CHECKED BY | DATE | MGRID, 2MM DUAL ROW HDR. SMT | | |
| SKTOH | 1995/04/26 | | | |
| APPROVED BY | DATE | MOLEX INCORPORATED | | |
| ROY | 1995/04/27 | | | |
| MATERIAL NO. | DOCUMENT NO. | SHEET NO. | | |
| | SD-87267-***5 | 3 OF 4 | | |
| SIZE | THIS DRAWING CONTAINS INFORMATION THAT IS PROPRIETARY TO MOLEX INCORPORATED AND SHOULD NOT BE USED WITHOUT WRITTEN PERMISSION | | | |
| A3 | | | | |

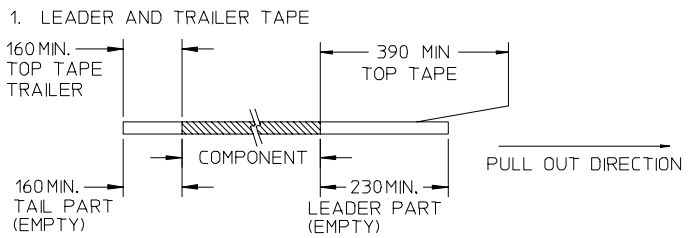
| | | | |
|--------------------|--|------------------------------|--|
| SALES DRAWING | | MGRID, 2MM DUAL ROW HDR. SMT | |
| MOLEX INCORPORATED | | | |
| SD-87267-***5 | | 3 OF 4 | |

9 8 7 6 5 4 3 2 1

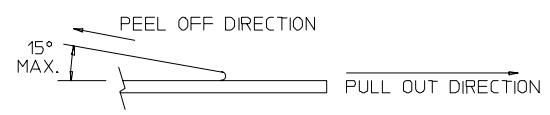
EMBOSSED CARRIER TAPE TYPE "C"



NOTES:



2. PEELING OFF FORCE OF THE TOP TAPE: 20-80gf.
(PEELING DIRECTION AS SHOWN IN FOLLOWING FIGURE)



3. PACKAGING STANDARD IS AS PER EIA-481.
4. TAPE & REEL QUANTITY = SEE TABLE

THIS TYPE OF CARRIER IS FOR CKT SIZE 8 AND BELOW.

| | | | | | | | | |
|---|-------------------------------|---------------------------------------|--|-----------------|-------|--|------------------------|--|
| ADD LEADER & TRAILER EC NO: S2005-0714 DRWN:KSEE CHKD:BLW APPR:PTLIM 2005/10/19 2005/10/19 2005/11/05 | QUALITY SYMBOLS ▽=0 ▽=0 | GENERAL TOLERANCES (UNLESS SPECIFIED) | | DIMENSION STYLE | SCALE | DESIGN UNITS | THIRD ANGLE PROJECTION | |
| | | | | MM/IN | NTS | METRIC | | |
| | | | | mm | INCH | | | |
| | | | | ANGULAR ±---° | | | | |
| DRAFT WHERE APPLICABLE MUST REMAIN WITHIN DIMENSIONS | | DRAWN BY | | DATE | | SALES DRAWING MGRID, 2MM DUAL ROW HDR. SMT | | |
| | | JWAN | | 1994/04/24 | | | | |
| A6 | | CHECKED BY | | DATE | | MOLEX INCORPORATED | | |
| | | SKTOH | | 1994/04/26 | | | | |
| REV | | APPROVED BY | | DATE | | MOLEX INCORPORATED DOCUMENT NO. SD-87267-***5 SHEET NO. 4 OF 4 | | |
| | | ROY | | 1994/04/2 | | | | |
| SIZE A3 | | MATERIAL NO. | | DOCUMENT NO. | | SHEET NO. | | |
| | | SEE TABLE | | SD-87267-***5 | | 4 OF 4 | | |
| THIS DRAWING CONTAINS INFORMATION THAT IS PROPRIETARY TO MOLEX INCORPORATED AND SHOULD NOT BE USED WITHOUT WRITTEN PERMISSION | | | | | | | | |