

DIMENSIONS ARE IN INCHES		TOLERANCES ARE:	
ONE PLACE DECIMALS ± .1 [2.5mm]	THREE PLACE DECIMALS ± .005 [0.13mm]	ANGLES	± 2°
TWO PLACE DECIMALS ± .01 [0.25mm]	FOUR PLACE DECIMALS ± .0020 [0.05mm]		

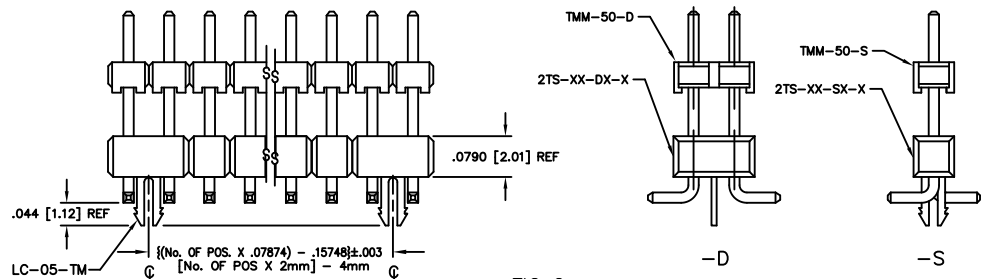


FIG 2
 (-LC OPTION)
 SAME AS FIG 1 EXCEPT WHERE NOTED.

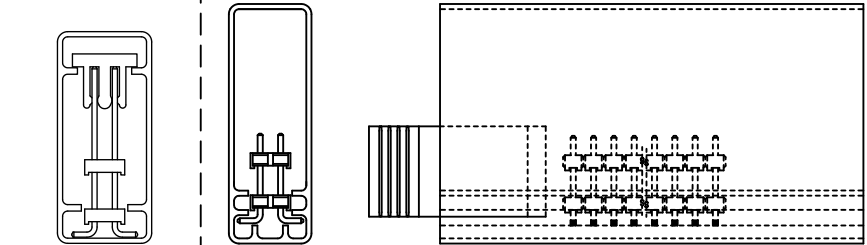


FIG 7
 PT-1-24-16-29
 TP-38

PAGING VIEW
 SCALE: .5X
 PT-1-TW001-D-SM
 TP-38

ORIENT PLUG SQUARE AT BOTTOM OF TUBE,
 PINS CANNOT CONTACT THE PLUG.

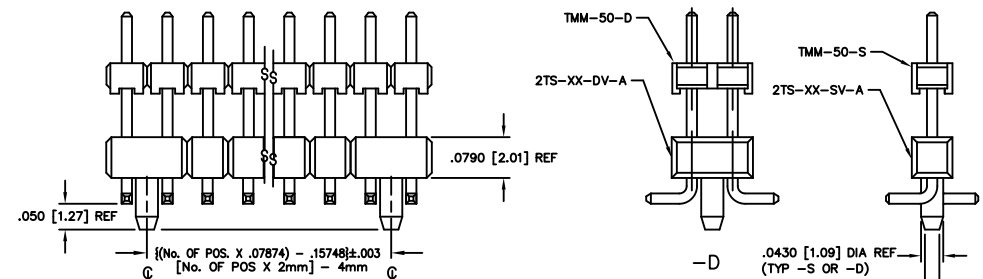


FIG 3
 (-A MOLDED ALIGNMENT PIN OPTION)
 SAME AS FIG 1 EXCEPT WHERE NOTED.

* -S
 (*=SEE NOTE 12)

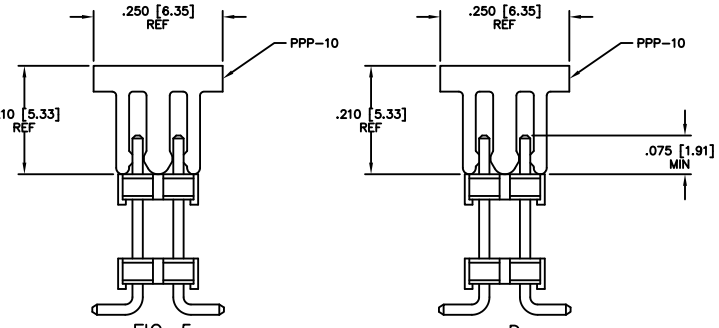


FIG 5
 (-M OPTION)
 (SEE NOTE 10)

FIG 6
 (-P OPTION)
 (SEE NOTE 10)

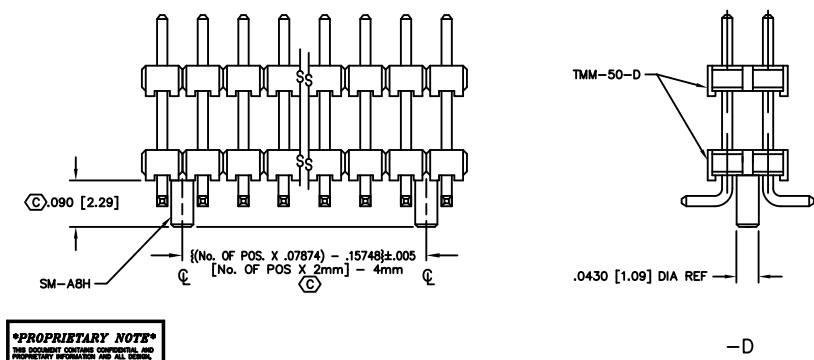
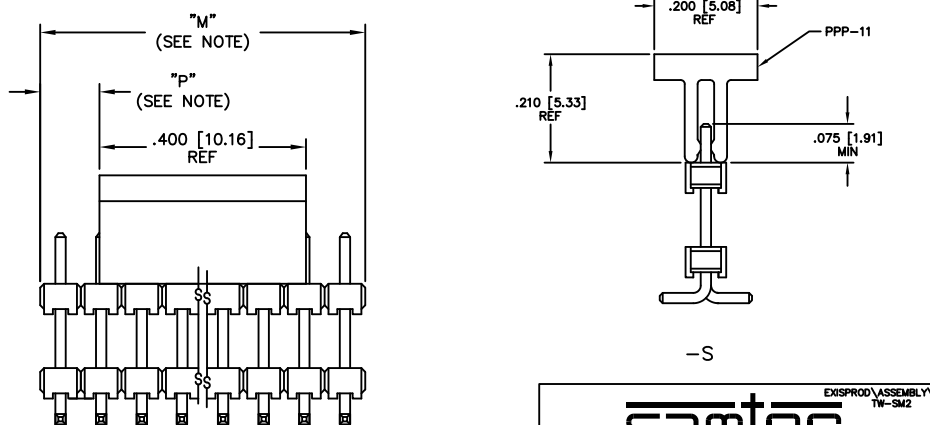


FIG 4
 (-A STAKED ALIGNMENT PIN OPTION)
 SAME AS FIG 1 EXCEPT WHERE NOTED.



NOTE: "M" = USED MEASURED DIMENSION (REF)
 "P" = {("M" - .400) / 2 } ± .020 [0.51]
 -APPLIES TO BOTH SINGLE & DOUBLE-

PROPRIETARY NOTE
 THIS DOCUMENT CONTAINS CONFIDENTIAL AND PROPRIETARY INFORMATION AND ALL RIGHTS ARE RESERVED. REPRODUCTION, USE, PASTOR, SALE, OR DISSEMINATION OF THIS DOCUMENT OR ANY INFORMATION CONTAINED HEREIN, WITHOUT THE WRITTEN PERMISSION OF SAMTEC, IS PROHIBITED. SAMTEC IS NOT RESPONSIBLE FOR ANY DAMAGE, LOSS, OR INJURY RESULTING FROM THE USE OF THIS DOCUMENT OR ANY INFORMATION CONTAINED HEREIN. SAMTEC'S POLICY IS TO PROVIDE THE LATEST REVISIONS OF THIS DOCUMENT.

samtec
 EXISPROD\ASSEMBLY\2MM
 TW-SM2

520 PARK EAST BLVD. NEW ALBANY, INDIANA 47150
 PHONE (812) 944-6733 P.O. BOX 1147
 CODE 55322

MADE BY:
 BRYANT 3-8-93 TW-XX-XX-XXX-X-XXX-SM-XXX-XX