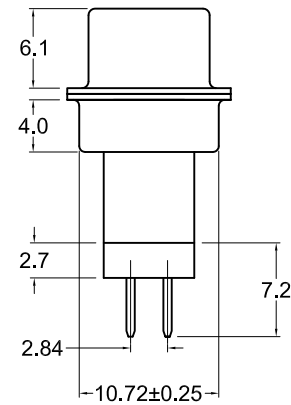
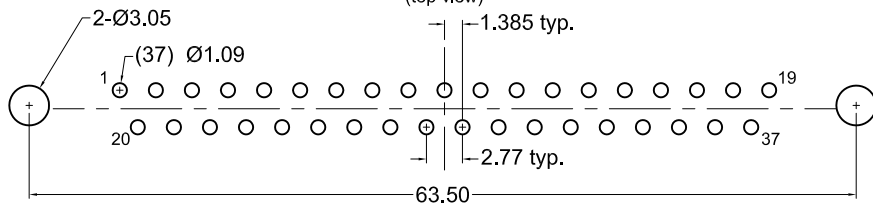


boardlocks not shown in this view



Recommended PCB Layout (top view)



Ferrite Specifications

Test Frequency	Edge Hole	Inner Hole
30 Mhz	17-27 Ohms	22-30 Ohms
50 Mhz	22-30 Ohms	29-37 Ohms
100 Mhz	29-34 Ohms	35-40 Ohms

Material and Finish

Shell: steel, Nickel Plated
 Insulator: PBT with glass-fiber reinforcement, UL 94V-0 rated, color - black
 Plug: brass
 Contact Plating Options:
 Standard: gold flash on both contact area and soldertails with entire contact nickel underplated

Electrical Specifications

Rated Current: 2A
 Rated Voltage: 30V RMS
 Dielectric Withstanding Voltage: 1000V AC (rms) min.
 Insulation Resistance: more than 1000 Megohm at 500V DC
 Contact Resistance: 13 milliohm max.
 Operating Temperature: -55°C to +105°C

RoHS COMPLIANT



Tolerances
X.X ± 0.25
X.XX ± 0.15
Unless Stated Otherwise

REV.	DATE	DESCRIPTION	REV. BY	CHK. BY	DRAWN BY	DATE
A1	10/23/06	New Drawing	R. Aguirre	H. MA	R. Aguirre	06/20/06
A2	1/21/08	ECO# 07-052	WILL H.	H. MA		
A3	02/22/10	ECO# 10-010	S. Vien	H. MA	UNITS	mm
A4	12/31/17	ECO# 17-035	H. MA	C. Furumasu		

KF88X-CC-37P-BR

Vertical PCB mount D-Sub, RoHS Compliant

37 Pin Male w/ Boardlock, Machined pins

