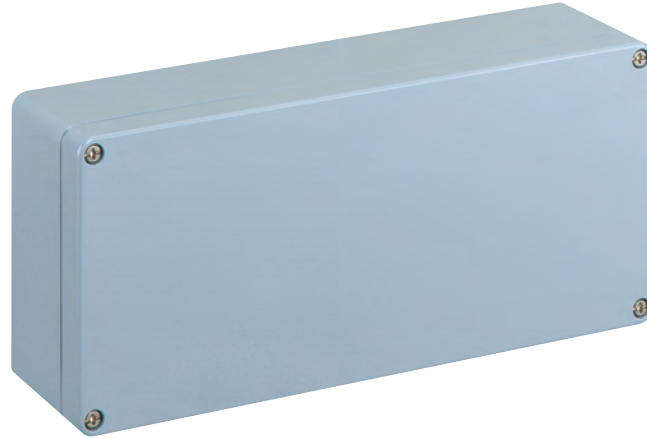


# AL 3616-9 – Aluminum – 360 x160 mm (14.17 x 6.30 in.)

## Standard Features

- **Protection Level:** IP66
- **Technical:** Smooth Sidewalls
- **Enclosure Material:** Cast Aluminum, Al Si 12
- **Gasket Material:** Polyurethane
- **Temperature Range:** -35°C to 80°C (-31°F to 176°F)
- **Color:** Silver Gray, RAL 7001
- **Accessories:** See section below



## Aluminum

| Ordering Information | Cat. No. | Type      | Length            | Dimensions mm (in) |                 | Std. Pk. |
|----------------------|----------|-----------|-------------------|--------------------|-----------------|----------|
|                      |          |           |                   | Width              | Height          |          |
| Enclosure            | 150-013  | AL 3616-9 | 360 mm (14.17 in) | 160 mm (6.30 in)   | 90 mm (3.54 in) | 1        |

## Accessories

| Ordering Information        | Cat. No. | Type       | Std. Pk. |
|-----------------------------|----------|------------|----------|
| Mounting Plate              | 155-013  | ALMPS-3616 | 1        |
| Hinge Kit Set               | 154-210  | HK-AL      | 1        |
| DIN Rail TS 35 - 35 x 345mm | 162-013  | TS35/345   | 1        |
| Mounting Tab Kit - large    | 154-006  | MT-AL2     | 1        |

Please refer to pages 149-152 for additional accessories and detailed information.

