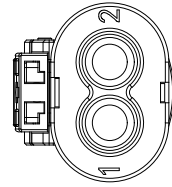
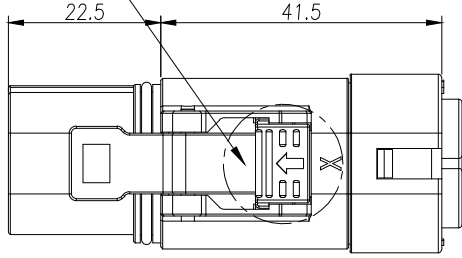
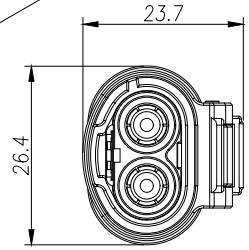
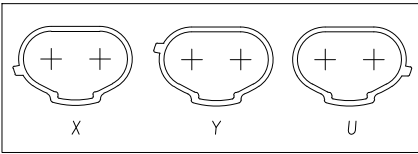


THIS DRAWING IS SUPPLIED FOR INFORMATION ONLY. DESIGN FEATURES, SPECIFICATIONS AND PERFORMANCE DATA SHOWN HEREON ARE THE PROPERTY OF THE AMPHENOL CORPORATION. NO RIGHTS OF REPRODUCTION ARE IMPLIED. ALL DIMENSIONS ARE SUBJECT TO NORMAL MANUFACTURING VARIATIONS.

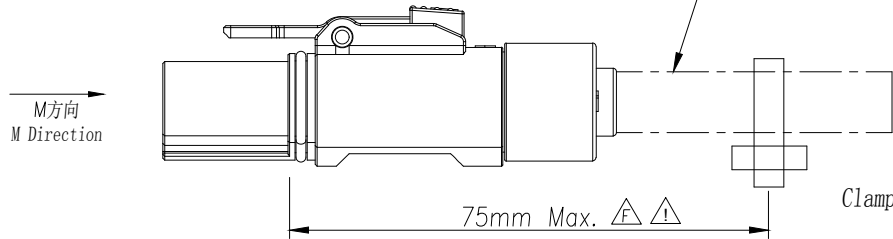
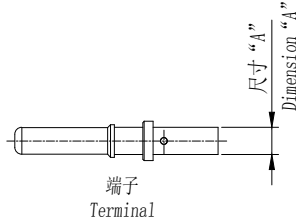
**Customer Drawing**



按键颜色见“订购信息”  
The color of press key see “Ordering Information”



M方向键位示意图  
Key Abridged General View of M Direction



**!**  
**Note:**  
Mechanical loads applied to the connector must be controlled by appropriate strain relief of the cable. No bend/twist/flex is allowed on cable prior to securement. Cable must be fixed to a point structurally contiguous with the receptacle connector within 75mm Max. from the mating interface of the plug and receptacle. No relative movement between receptacle and first cable securing device is permissible. Strain relief distance should be minimized for all applications

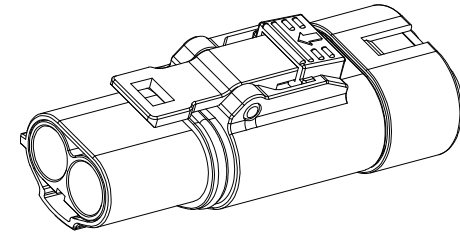
- 规格参数 (Spec.):
1. 工作温度 Operating temperature: -40° C~+125° C.
  2. 额定电流 Current rating (connector only):  
2.5mm<sup>2</sup>: 25A, 4mm<sup>2</sup>: 40A **!**

3. 额定电压 Operating voltage: 1000 VDC.
4. 耐电压 Dielectric withstanding voltage: 5000 VDC.
5. 防护等级 Protection class: IP67 & IP2X. **!**
6. 电磁屏蔽 Shielding.
7. 机械寿命 Mating cycle: 100 Min. **!**
8. 带自动二次锁扣 Automatic secondary lock.
9. 带高压互锁 Electrical interlock (HVIL).
10. 对配插座见图纸 Mating receptacle see drawing: “PL082-60”.

**订购信息 Ordering Information**

|                    |                  |                                    |
|--------------------|------------------|------------------------------------|
| PL18 2 X - 6 1 - 4 |                  |                                    |
| 键位及颜色 Key & Color  | 高压互锁 HVIL        | 线缆大小 Cable Size                    |
| "X", 橙色 Orange     | 0, 不带互锁 No HVIL  | "4"=4mm <sup>2</sup> shielding     |
| "Y", 黑色 Black      | 1, 带互锁 With HVIL | "2.5"=2.5mm <sup>2</sup> shielding |
| "U", 黄色 Yellow     |                  |                                    |

| REVISIONS |      |     |   |          |      |      |
|-----------|------|-----|---|----------|------|------|
| REV       | ZONE | ECO | DESCRIPTION   | DATE     | BY   | APPR |
| 1         | --   | --  | INITIAL RELEASE                                     | 11/21/13 | RW   | EC   |
| A1        | --   | --  | Updated Spec.                                       | 07/17/14 | RW   | EC   |
| A2        | --   | --  | Updated Back Cover                                  | 11/21/14 | RW   | EC   |
| B         | --   | --  | Change The Color of Press Key & Recommended Wire OD | 03/04/15 | RW   | EC   |
| B1        | --   | --  | Add dimension of terminal                           | 04/28/15 | RW   | EC   |
| C         | --   | --  | Add key abridged general view                       | 09/17/15 | RW   | TS   |
| D         | --   | --  | Change pin for 4mm2 wire                            | 11/03/15 | RW   | TS   |
| E         | --   | --  | Updated Spec.                                       | 11/08/16 | SW   | TS   |
| F         | --   | --  | Add Suggestion For Mounting and Installation        | 06/28/17 | JL   | JG   |
| G         | --   | --  | Add rating current                                  | 02/07/18 | YM   | JG   |
| H         | --   | --  | Updated Spec.                                       | 08/24/18 | Fred | JL   |



**Standard Part List (With HVIL) 带高压互锁**

| P/N         | Model NO.     | Recommended Wire OD | Dimension "A" | Mating Rcpt Model NO. |
|-------------|---------------|---------------------|---------------|-----------------------|
| AC-HA000743 | PL182X-61-2.5 | 5.0~5.4mm           | Ø4.00mm       | PL082X-61-2.5         |
| AC-HA000744 | PL182Y-61-2.5 |                     |               | PL082Y-61-2.5         |
| AC-HA000745 | PL182U-61-2.5 |                     |               | PL082U-61-2.5         |
| AC-HA000919 | PL182X-61-4   | 5.6~6.0mm           | △ Ø4.57mm     | PL082X-61-4           |
| AC-HA000920 | PL182Y-61-4   |                     |               | PL082Y-61-4           |
| AC-HA000921 | PL182U-61-4   |                     |               | PL082U-61-4           |

**Standard Part List (Without HVIL) 不带高压互锁**

| P/N         | Model NO.     | Recommended Wire OD | Dimension "A" | Mating Rcpt Model NO. |
|-------------|---------------|---------------------|---------------|-----------------------|
| AC-HA000746 | PL182X-60-2.5 | 5.0~5.4mm           | Ø4.00mm       | PL082X-60-2.5         |
| AC-HA000747 | PL182Y-60-2.5 |                     |               | PL082Y-60-2.5         |
| AC-HA000748 | PL182U-60-2.5 |                     |               | PL082U-60-2.5         |
| AC-HA000922 | PL182X-60-4   | 5.6~6.0mm           | △ Ø4.57mm     | PL082X-60-4           |
| AC-HA000923 | PL182Y-60-4   |                     |               | PL082Y-60-4           |
| AC-HA000924 | PL182U-60-4   |                     |               | PL082U-60-4           |

|                      |  |  |                       |   |                 |   |                     |
|----------------------|--|--|-----------------------|---|-----------------|---|---------------------|
|                      |  | <b>Amphenol Technical Products International Asia.</b> |                       |   |                 | PART NAME:<br>PwrLok 4mm 2POS Plug Conn |                     |
|                      |  | 第三角投影<br>THIRD ANGLE<br>PROJECTION                     | 页面<br>SHEET<br>1 OF 2 | 幅面<br>SIZE<br>A3  | 版次<br>REV.<br>H | 比例<br>SCALE                             | DWG NO:<br>PL182-60 |
| 签名 SIGNATURE<br>Fred |  | 日期 DATE<br>08/24/18                                    |                       | UNLESS OTHERWISE SPECIFIED<br>1) All dimensions are in metric(mm).<br>2) Tolerances are as follows:<br>Ø PL DEC ±1.00<br>1 PL DEC ±0.50<br>2 PL DEC ±0.20 |                 | CUST PART #:<br>N/A                     |                     |
| 制图 DRAWN<br>Fred     |  | 审核 CHECKED   |                       | 批准 APPROVAL   |                 | CUST REV.<br>-                          |                     |