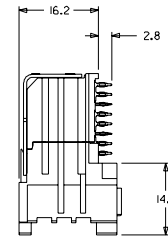
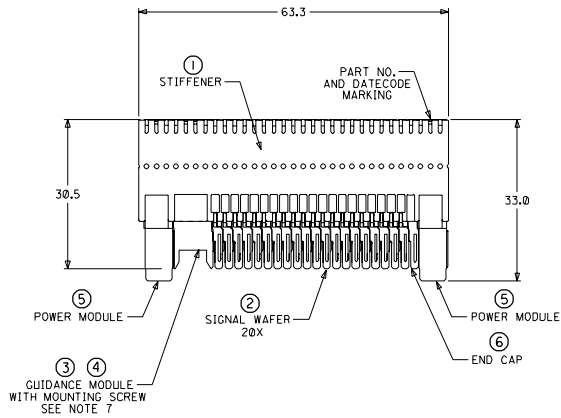
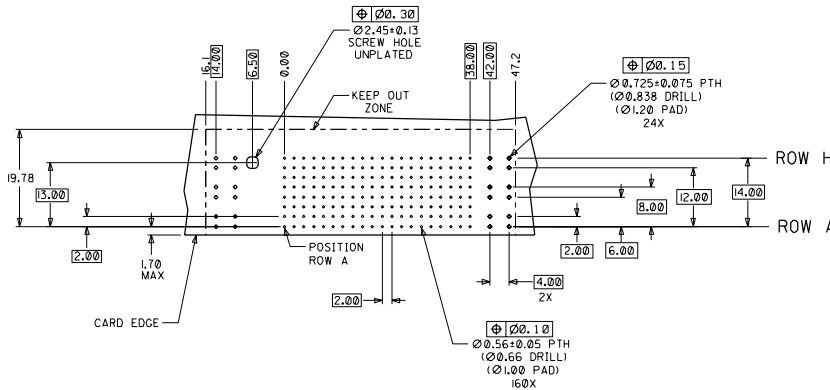
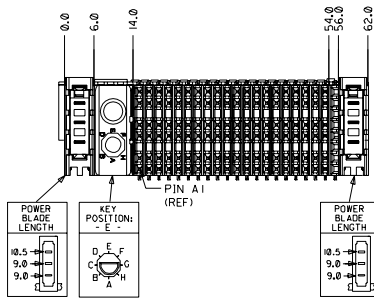


CUSTOMER: NISHAN



- NOTES: (UNLESS OTHERWISE SPECIFIED)
- MATERIALS: HOUSING - LIQUID CRYSTAL POLYMER (LCP), GLASS-FILLED, UL94V-0, BLACK.  
TERMINALS - HIGH PERFORMANCE COPPER ALLOY.  
STIFFENER - STAINLESS STEEL.
  - FINISH: SELECTIVE GOLD (Au) IN CONTACT AREA, 0.00076mm MINIMUM THICKNESS; SELECTIVE TIN/LEAD (Sn/Pb) ON PCB TAILS, NICKEL (Ni) OVERALL.
  - REFER TO MOLEX PRODUCT SPECIFICATION PS-74031-999 FOR PERFORMANCE SPECIFICATIONS.
  - REFER TO MOLEX DOCUMENT SD-74681-002 FOR ADDITIONAL DETAIL ON THE HSD SIGNAL WAFER.
  - REFER TO MOLEX DOCUMENT SD-74037-006 FOR ADDITIONAL DETAIL ON THE GUIDANCE MODULE.
  - REFER TO MOLEX DOCUMENT SD-74026-002 FOR ADDITIONAL DETAIL ON THE POWER MODULE.
  - MOUNTING SCREWS WILL BE BAGGED WITH EACH CONNECTOR.
  - PARTS ARE PACKAGED IN TUBES PER PK-70873-5041.



DAUGHTERCARD HOLE PATTERN (CONNECTOR SIDE)

ITEM	PART NUMBER	DESCRIPTION	QTY
1	74046-0063	STIFFENER	1
2	74681-0001	HSD8 WAFER	20
3	74037-8005	POLARIZING/GUIDE MODULE	1
4	73726-0000	GUIDE MODULE MNTG SCREW	1
5	74026-8223	POWER MODULE	2
6	74038-1001	END CAP	1

INITIAL RELEASE EC NO. UDT2002-0345 DRAWN: ATP 01/08/27 CHK: LAURX 01/08/27 APPR: BIXLER 01/08/27	QUALITY SYMBOLS MAJOR = 0 CRITICAL = 0	GENERAL TOLERANCES (UNLESS SPECIFIED) mm    INCH	SCALE 2 : 1	DESIGN UNITS mm    INCH	DIMENSIONS: mm    INCH    mm    mm	SHT 2	REV 1	
		DRAWN BY & DATE ATP 01/08/27	CHECKED BY & DATE LAURX 01/08/27	TITLE 8 ROW HSD DAUGHTERCARD ASSEMBLY SALES DRAWING	MOLEX INCORPORATED			
		APPROVED BY & DATE BIXLER 01/08/27	CAD FILENAME SD-74680-049	MATERIAL NO. 746800049	DRAWING NO. SD-74680-049	SHEET NO. 1 OF 1	SIZE D	
		DRAFT WHERE APPLICABLE MUST REMAIN WITHIN DIMENSIONS		THIS DRAWING CONTAINS INFORMATION THAT IS PROPRIETARY TO MOLEX INCORPORATED AND SHOULD NOT BE USED WITHOUT WRITTEN PERMISSION.				