

## PATCHBOX® Plus+ Cassettes STP / UTP

The PATCHBOX® is the most modern cabling system for network cabinets. It makes conventional cable guides and patch cables simply look old. Thousands of satisfied customers worldwide rely on this patented innovation to make their IT more efficient, faster and more economical.

### Technical Specification

#### STP Cable

Flat Cat.6a U/FTP, ISO/IEC 11801 Channel Class Ea, ANSI/EIA/TIA-568 Cat 6A Channel, 500MHz, AWG36, 100% stranded copper, PVC jacket, PoE (802.3af), RoHS compliant

#### UTP Cable

Flat Cat.6a U/UTP, ISO/IEC 11801 Channel Class Ea, ANSI/EIA/TIA-568 Cat 6A Channel, 500MHz, AWG30, 100% stranded copper, PVC jacket, PoE++ (802.3bt, Type 3 (60 W)), RoHS compliant

#### Connector

RJ45 shielded plug, pins gold plated, snagless booted

#### Cable length

1.8m covers 30RU

#### Cassette Profiles

Stainless steel, laser-welded

#### Plastic Parts

Polyoxymethylene POM

#### Operating Temperature Range

-20°C – 60°C

#### Ambient Humidity Non-Condensing

10% -90%

#### Gross Weight

0.40kg

#### Packaging Dimensions

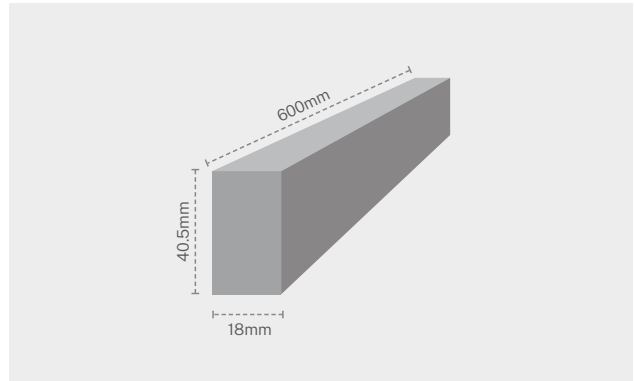
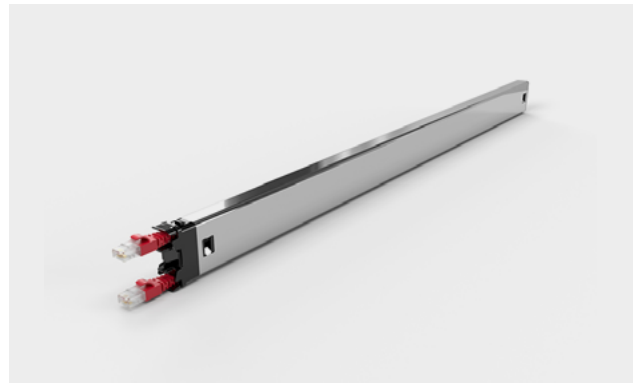
690mm x 50mm x 50mm WxDxH

#### HS-Code

8544 4210

#### For Customers in Australia & New Zealand

STP patch cords are compliant with AS/CA S008:2010 A1:2014



### Items included

1 x PATCHBOX Plus+ STP / UTP Cassette with Cat.6a cable

### Shielded Twisted Pair (STP) Variants

Product Code	Cable Color
C60STPXC6AXX1K	Black
C60STPXC6AXX1B	Blue
C60STPXC6AXX1G	Green
C60STPXC6AXX1R	Red
C60STPXC6AXX1W	White
C60STPXC6AXX1Y	Yellow
C60STPXC6AXX1GY	Grey
C60STPXC6AXX1V	Violet

### Unshielded Twisted Pair (UTP) Variants

Product Code	Cable Color
C60UTPXC6AXX1K	Black
C60UTPXC6AXX1B	Blue
C60UTPXC6AXX1G	Green
C60UTPXC6AXX1R	Red
C60UTPXC6AXX1W	White
C60UTPXC6AXX1Y	Yellow
P60UTPXC6AXX24V	Violet

