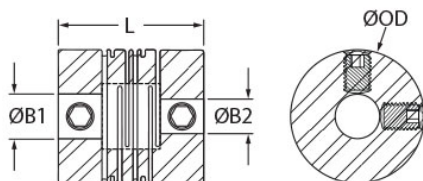




## MRLS6-3-1.5-A

Ruland MRLS6-3-1.5-A, 3mm x 1.5mm Long Slit Coupling, Aluminum, Set Screw Style, 6.0mm OD, 12.5mm length



### Description

Ruland MRLS6-3-1.5-A is a set screw style slit coupling with 3mm x 1.5mm bores, 6.0mm OD, and 12.5mm length. It is manufactured from a single piece of material and has two sets of intermittent slit cuts allowing for a maintenance-free coupling with high torsional stiffness in relation to comparable couplings, such as beam type. MRLS6-3-1.5-A has small dimensions and is designed to mate with micro motors, ball screws, and lead screws in high precision medical and scientific equipment. This long style slit coupling has added torque and misalignment capabilities compared to the short style. MRLS6-3-1.5-A is zero-backlash, has a balanced design for reduced vibration at speeds up to 32,000 RPM, and can accommodate all forms of misalignment with light bearing loads. It is manufactured by Reliance Precision Ltd. in their County Cork, Ireland factory from 7075 aluminum for lightweight and low inertia. MRLS6-3-1.5-A is inventoried by Ruland and RoHS3 and REACH compliant.

### Product Specifications

<b>Bore (B1)</b>	3 mm	<b>Small Bore (B2)</b>	1.5 mm
<b>B1 Max Shaft Penetration</b>	4.8 mm	<b>B2 Max Shaft Penetration</b>	4.8 mm
<b>Outer Diameter (OD)</b>	6 mm	<b>Bore Tolerance</b>	+0.010 mm / -0.000 mm
<b>Length (L)</b>	12.5 mm	<b>Slotted Set Screw</b>	M1.2
<b>Screw Material</b>	18-8 300 Series Stainless Steel	<b>Screw Finish</b>	Bright
<b>Number of Screws</b>	4	<b>Dynamic Torque Reversing</b>	0.10 Nm
<b>Angular Misalignment</b>	1.7°	<b>Dynamic Torque Non-Reversing</b>	0.15 Nm
<b>Parallel Misalignment</b>	0.04 mm	<b>Peak Torque</b>	0.25 Nm
<b>Axial Motion</b>	0.06 mm	<b>Torsional Stiffness</b>	0.1 Nm/Deg
<b>Moment of Inertia</b>	0.00001318 lb-in <sup>2</sup>	<b>Maximum Speed</b>	32,000 RPM
<b>Full Bearing Support Required?</b>	Yes	<b>Zero-Backlash?</b>	Yes
<b>Balanced Design</b>	Yes	<b>Material Specification</b>	7075-T651 Extruded and Drawn Aluminum Bar
<b>Temperature</b>	-110°F to 175°F (-80°C to 80°C)	<b>Finish Specification</b>	SurTec 650
<b>Manufacturer</b>	Reliance Precision Limited	<b>Country of Origin</b>	Ireland
<b>Weight (lbs)</b>	0.001500	<b>UPC</b>	634529296387
<b>Tariff Code</b>	8483.60.8000	<b>UNSPC</b>	31163003
<b>Note 1</b>	Performance ratings are for guidance only. The user must determine suitability for a particular application.		

Prop 65

**⚠WARNING** This product can expose you to the chemical Nickel (metallic), known to the State of California to cause cancer. For more information go to [www.P65Warnings.ca.gov](http://www.P65Warnings.ca.gov).