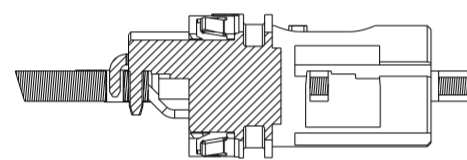
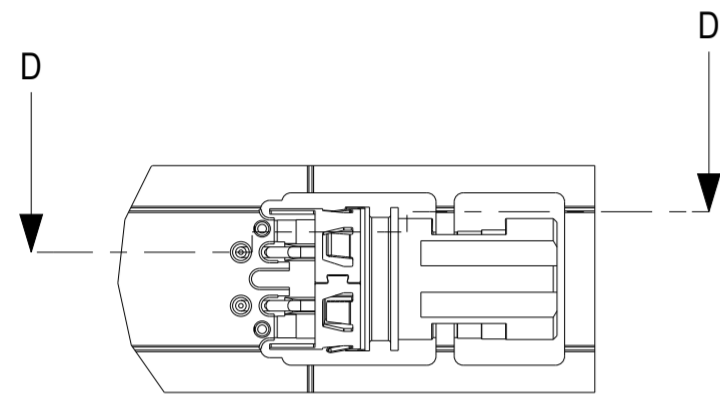
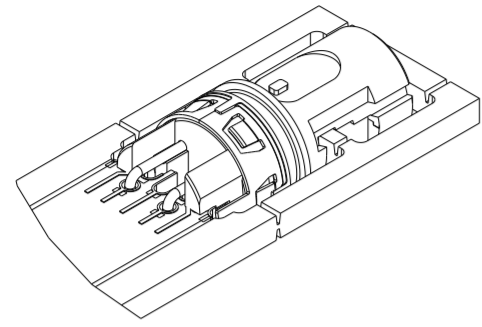


Leiterplatten Optionen / PCB options

Leiterplattendicke 2 mm  
Layoutempfehlung siehe 225321

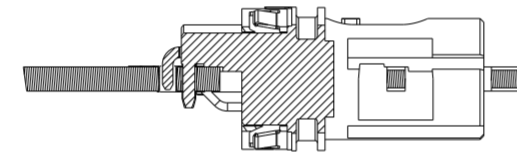
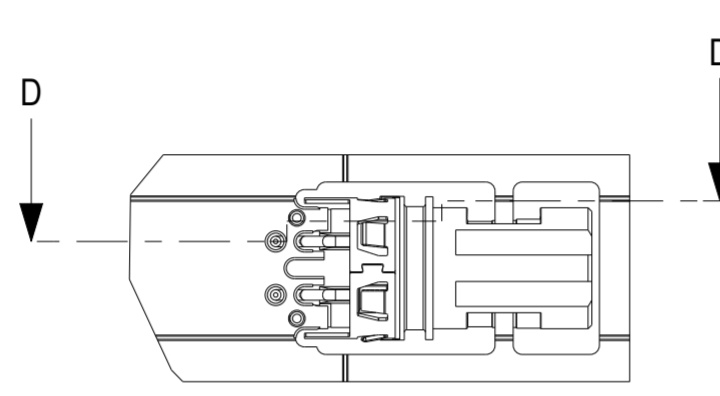
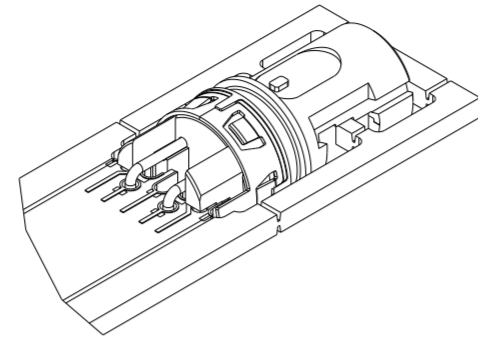
PCB thickness 2 mm  
For recommended dims see 225321



SCHNITT D-D  
SECTION D-D

Leiterplattendicke 1,6 mm  
Layoutempfehlung siehe 225321

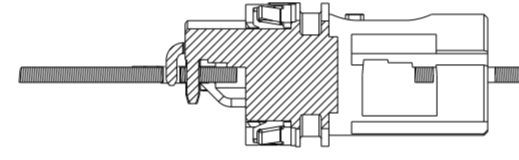
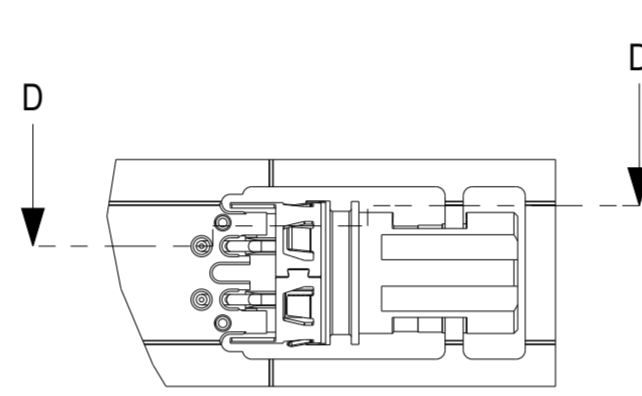
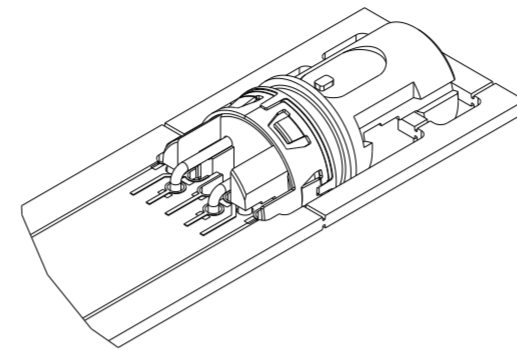
PCB thickness 1,6 mm  
For recommended dims see 225321



SCHNITT D-D  
SECTION D-D

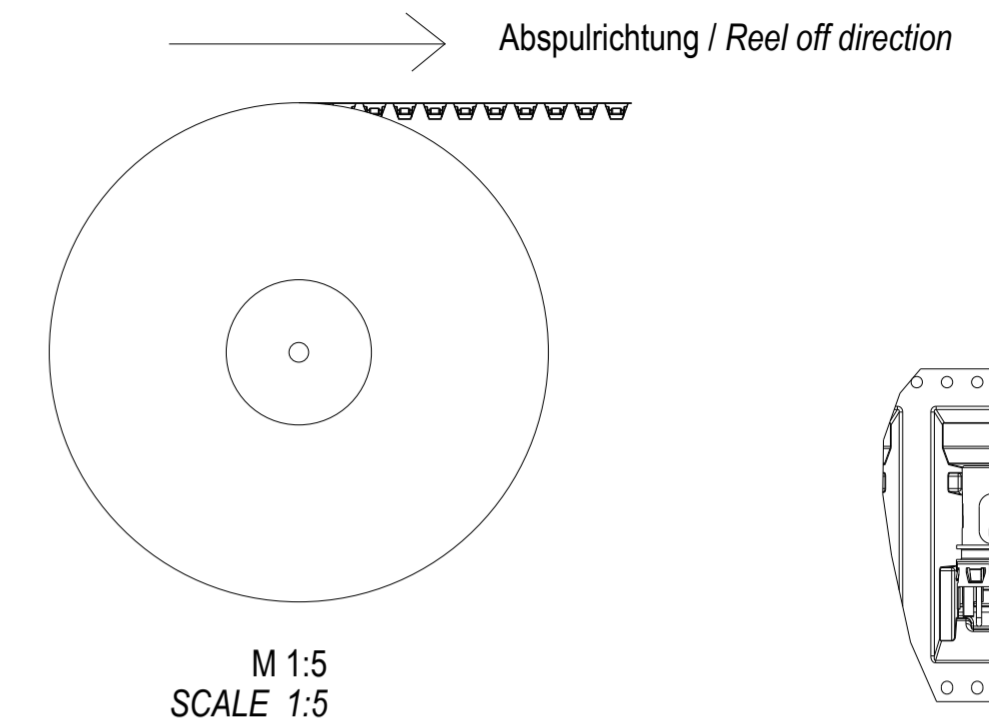
Leiterplattendicke 1 mm  
Layoutempfehlung siehe 225321

PCB thickness 1 mm  
For recommended dims see 225321

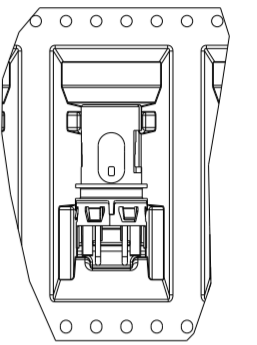


SCHNITT D-D  
SECTION D-D

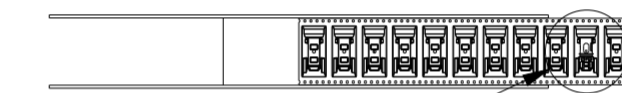
Verpackung / Packaging tape and reel (T&R)



M 1:5  
SCALE 1:5



ANSICHT A  
M 1:1  
DETAIL A  
SCALE 1:1

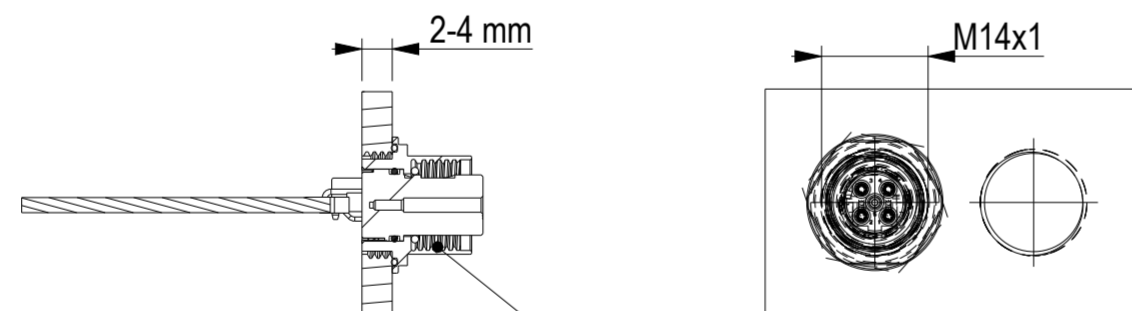
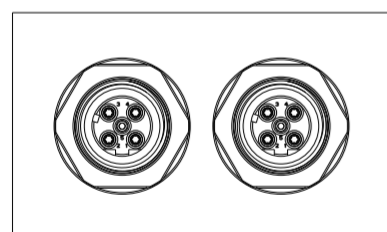


SIEHE ANSICHT A  
SEE DETAIL A

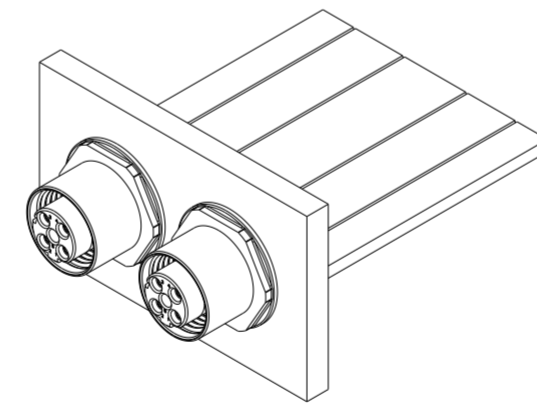
VPE: 250 Stück  
PU: 250 pcs.

Anwendungsbeispiel / Application example

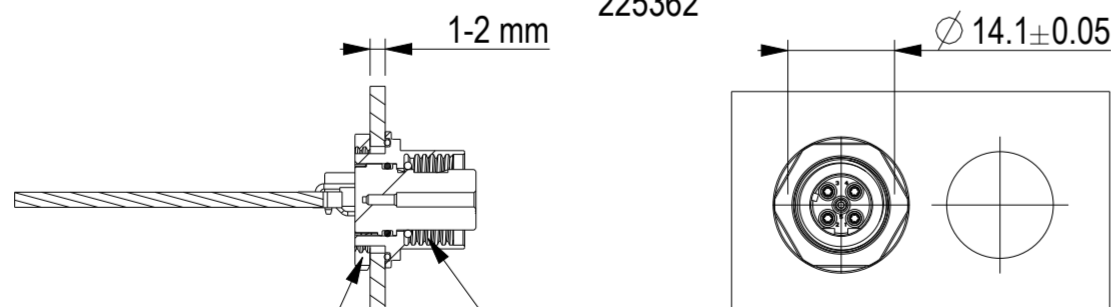
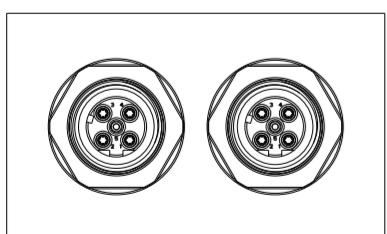
Gewinde-Löcher / Thread holes



Verriegelung schraube  
Locking screw  
225362



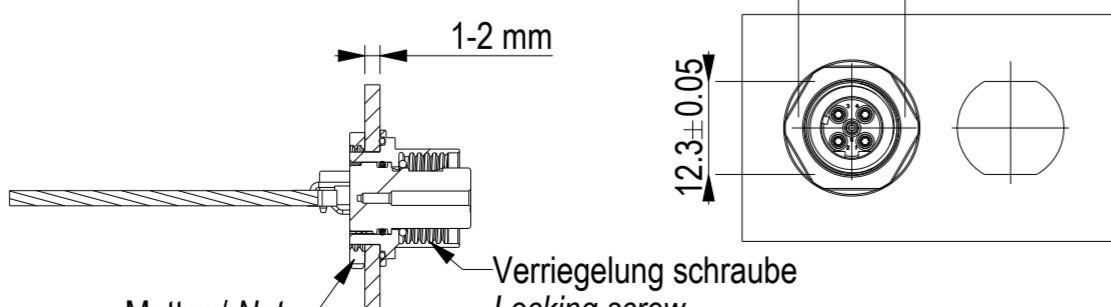
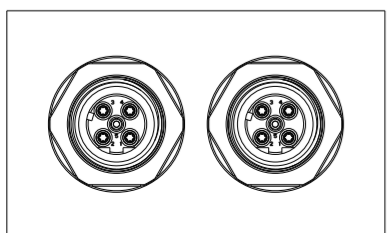
Standard-Löcher / Standard holes



Mutter / Nut  
354003

Verriegelung schraube  
Locking screw  
225362

Montageloch für Verdreherschutz / Assembly hole for twist protection



Mutter / Nut  
354003

Verriegelung schraube  
Locking screw  
225362

Hinweise:  
Für den O-Ring ist eine Einführschräge vorzusehen! Zur Verringerung der Montagekräfte den O-Ring oder das Gehäuse ggf. befeuchten. Je nach Lötverfahren oder Lötanlage kann es notwendig sein den O-Ring erst nach dem Löten zu montieren.  
Note:  
For the O-ring there has to be a smooth chamfer at the housing! For reduction of assembly force grease for O-ring or housing can be used if applicable. Dependent on soldering process or solder machines there can be a need to attach the O-ring after soldering.

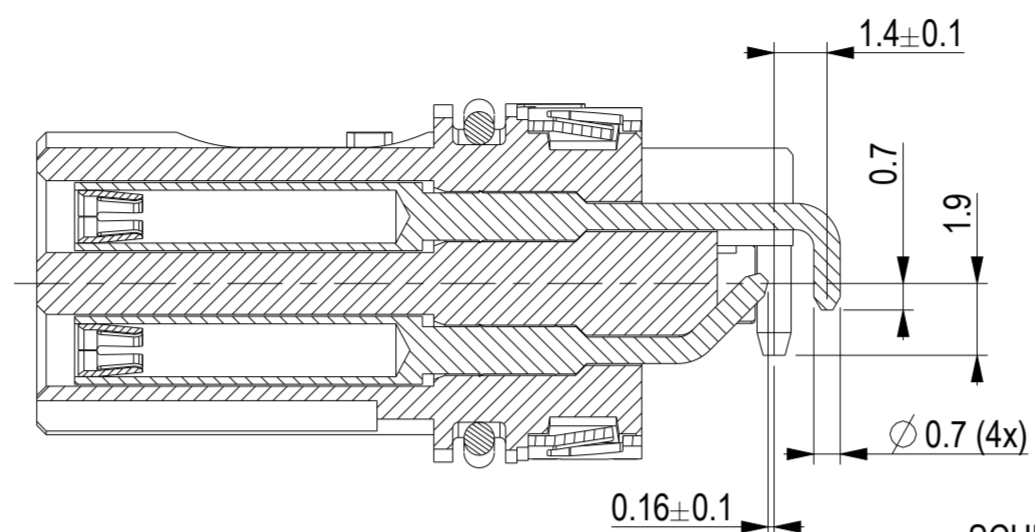
Maßempfehlung für Gehäuseintegration siehe 225406  
Recommended dimensions for integration in housing see 225406

Technische Daten siehe Document 225407  
Technical data see document 225407

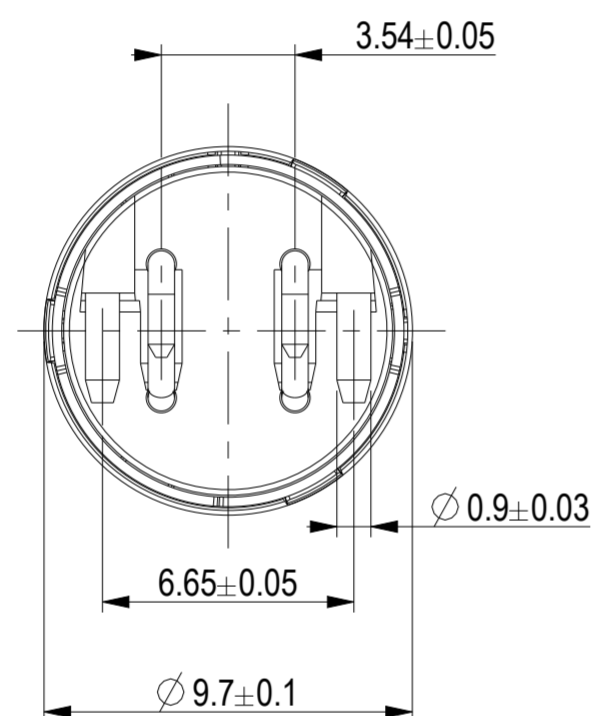
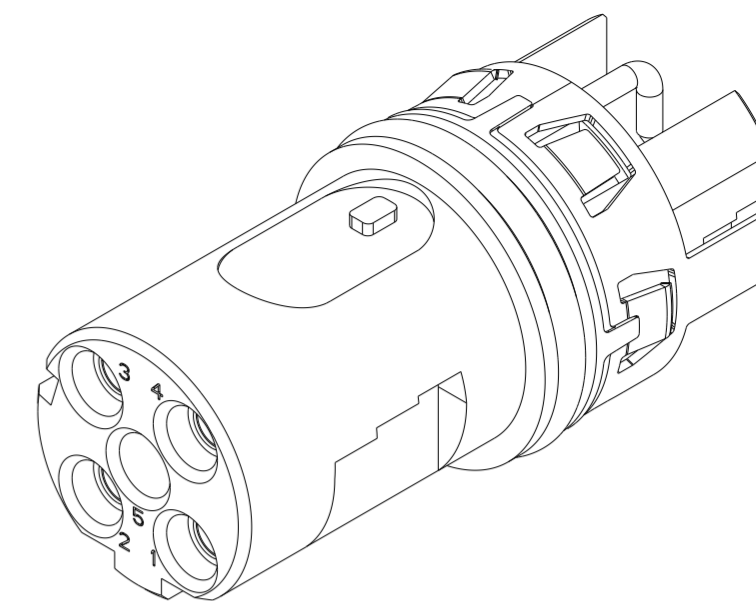
| 225283   | 2                           | no   | no               | 4   | 1,2,3,4                    | T&R                          |                      |
|--|-----------------------------|--|------------------|---|----------------------------|------------------------------|----------------------|
| 225284   | 2                           | yes  | no               | 4   | 1,2,3,4                    | T&R                          |                      |
| 235190   | 2                           | yes  | yes              | 4   | 1,2,3,4                    | T&R                          |                      |
| Ident-Nr.<br>Ident-No.   | Zeichn. Blatt<br>Drw. sheet | Schirm<br>Shield   | O-ring<br>O-ring | Polzahl<br>No. pins                                       | Kontakt Nr.<br>Contact No. | Verpackung<br>Packaging      | Bemerkung<br>Remarks |
| Information  |                             | Tolerances   |                  | Scale 1:4   |                            |                              |                      |
| All rights reserved. Only for information. To ensure that this is the latest version of this drawing, please contact one of the ERNI companies before using. |                             | Subject to modification without prior notice. Drawing will not be updated. |                  | Designation   |                            | Alle Varianten / all version |                      |
|  |                             | ERNI www.ERNI.com  |                  | M12 90° F D THR Rückmontage<br>M12 90° F D THR rear mount |                            |                              |                      |
| D  | 06.10.17                    |  |                  | 225285  |                            | I<br>(1 / 2)<br>A2           |                      |
| Index  | Date                        |  |                  | Class   |                            | M12                          |                      |

| Ident-Nr.<br>Ident-No. | O-ring<br>O-ring | Schirm<br>Shield | Verguß<br>Potting |
|------------------------|------------------|------------------|-------------------|
| 225283                 | no               | no               | recommended       |
| 225284                 | no               | yes              | not needed        |
| 256190                 | yes              | yes              | not needed        |

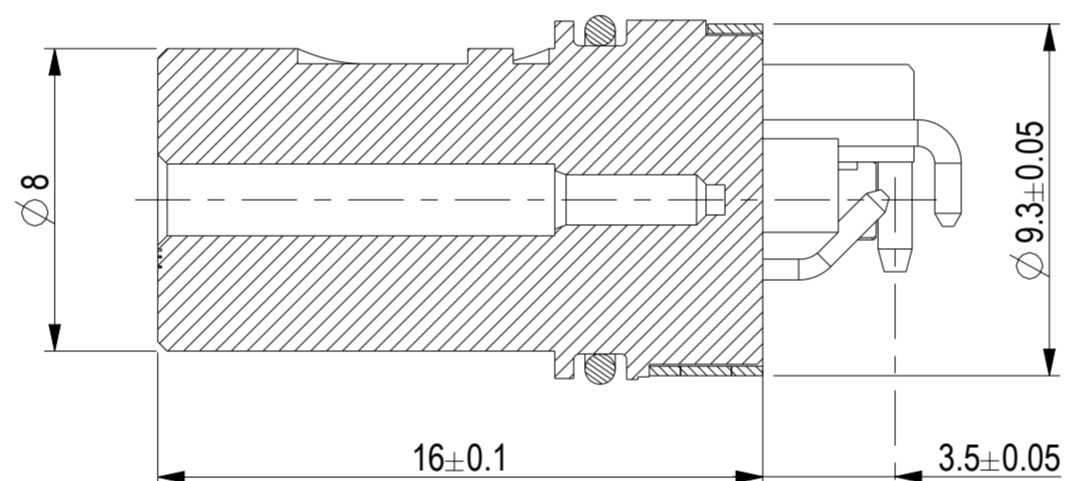
Darstellung mit Schirm und O-Ring  
Drawn with shield and O-ring



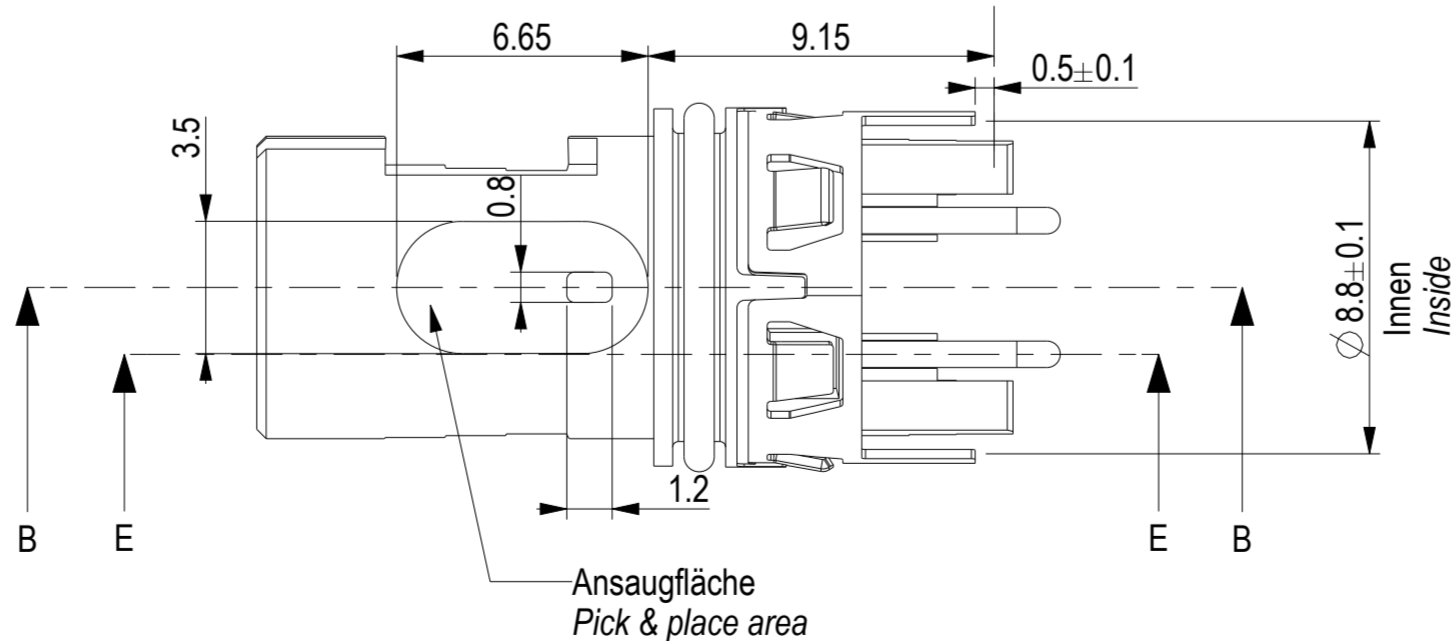
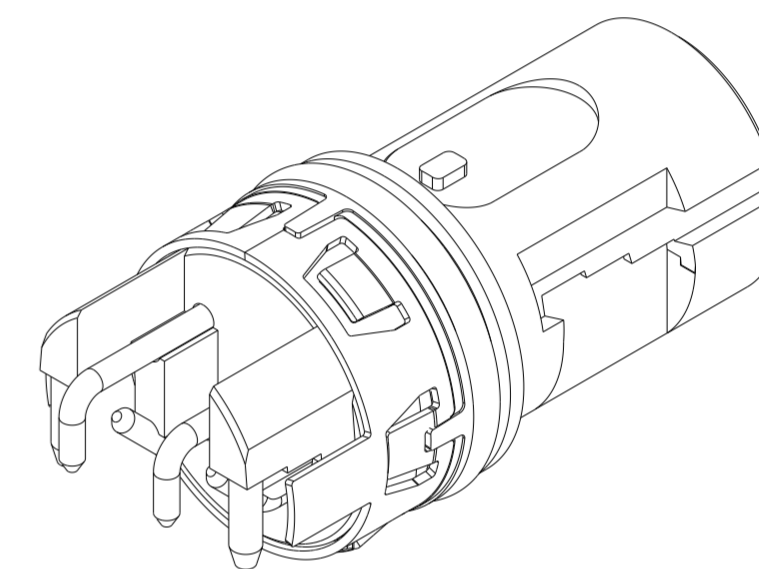
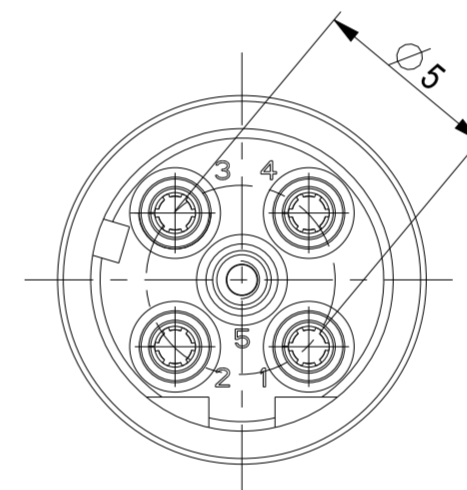
SCHNITT E-E  
SECTION E-E



Gemessen über Schirmkontakte  
Measured over shield contacts



SCHNITT B-B  
SECTION B-B



Steckgesicht nach IEC 61076-2-101  
Mating face acc. IEC 61076-2-101

Copyright by ERNI GmbH  
Proprietary notice pursuant to BSC 18016 to be observed.

| Information  |          | Tolerances               | Scale   | 5:1                |
|--|----------|--------------------------|---|--------------------|
| All rights reserved.<br>Only for information.<br>To ensure that this is the latest version of this drawing, please contact one of the ERNI companies before using. |          | <br>All Dimensions in mm | Designation   |                    |
| Subject to modification without prior notice.<br>Drawing will not be updated.  |          |                          | 4 polige Version / 4 pin version<br><b>M12 90° F D THR Rückmontage</b><br><b>M12 90° F D THR rear mount</b> |                    |
| www.ERNI.com   |          | <b>225285</b>            |   | 1<br>(2 / 2)<br>A2 |
| D  | 06.10.17 | Class                    |   | M12                |
| Index  | Date     |                          |   |                    |