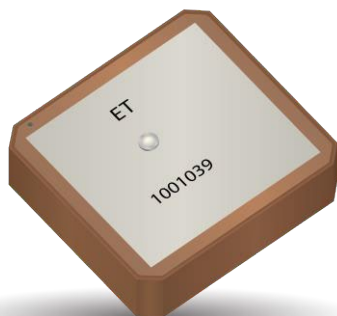


# Part No. 1001039 GPS Ceramic Patch Antenna

**1.575 GHz**

Supports: Tracking, Smart Home, Agriculture, Automotive, Healthcare, Digital Signage, Wearables, Industrial Devices



## GPS Ceramic Patch Antenna

1.575 GHz

### KEY BENEFITS

#### Reduced Costs and Time-to-Market

Standard antenna eliminates design fees and cycle time associated with a custom solution; getting products to market faster.

#### Quicker Time-to-Market

By optimizing antenna size, performance and emissions, customer and regulatory specifications are more easily met.

#### Reliability

Products are the latest RoHS version compliant.

### APPLICATIONS

- Embedded design
- POS, Headsets, Tablets
- Gateway, Access Point
- Handheld
- Telematics
- Tracking
- Healthcare
- M2M, Industrial devices
- Smart Grid
- OBD-II

KYOCERA AVX antennas deliver on the key needs of device designers for higher functionality and performance in smaller/thinner designs. These innovative antennas provide compelling advantages for GPS enabled handheld devices, media players and other mobile devices.

### Electrical Specifications

Typical Characteristics, on 70 x 70 mm ground plane

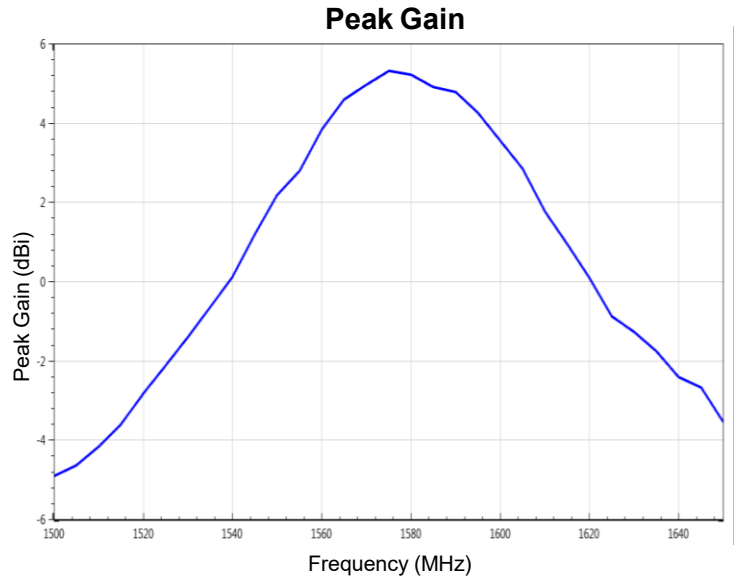
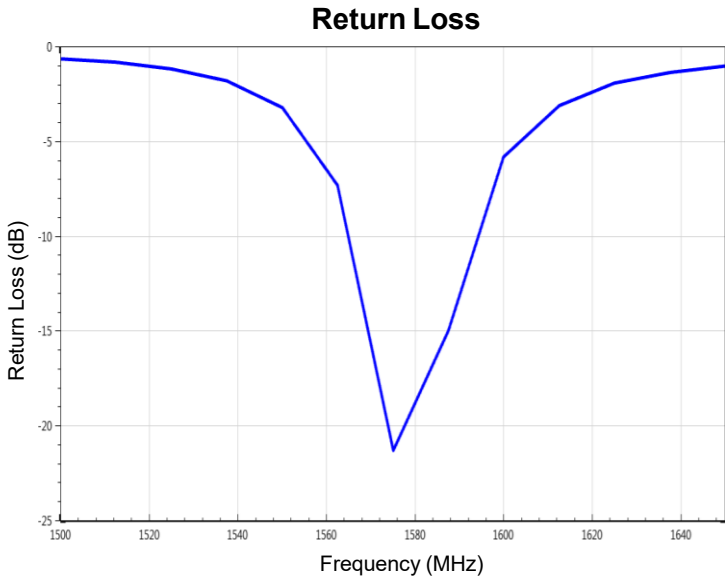
Frequency	1.575 GHz
Center Frequency $f_0$	1575 $\pm$ 3.0 MHz
Return Loss	< -20 dB
Gain 0° XZ-Plane	5.3 dBic
Polarization	R.H.C.P
Impedance	50 ohm
Axial Ratio	1.8 dB

### Mechanical Specifications & Ordering Part Number

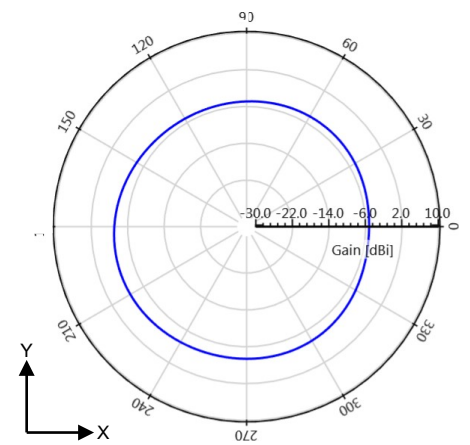
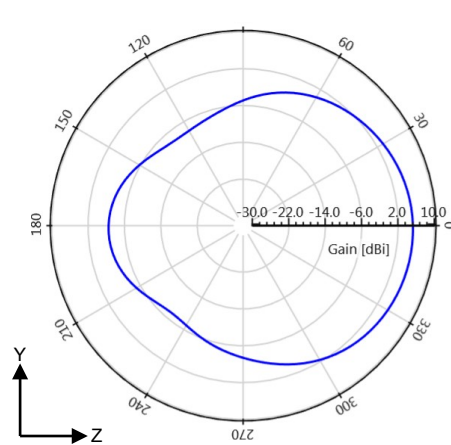
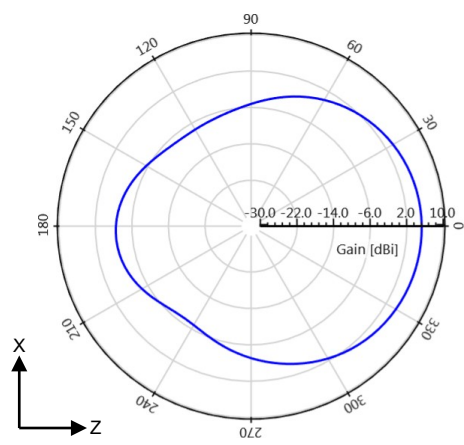
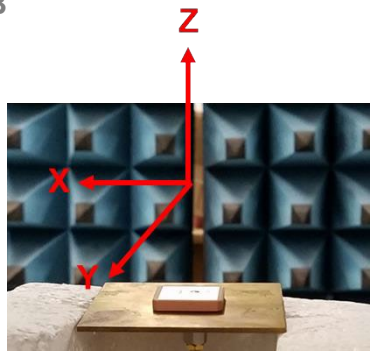
Ordering Part Number	1001039
Size (mm)	25.0 x 25.0 x 4.5
Mounting (mm)	Adhesive (Nitto 5000NS 22 x 22 x 0.16) & 1 through-hole Soldered Pin
Weight (grams)	9.4
Packaging	Plastic Tray

1.575 GHz KYOCERA AVX Embedded Antenna Specifications.  
 KYOCERA AVX produces a wide variety of standard and custom antennas to meet user needs.

**VSWR and Peak Gain Plots**  
 Typical performance on 70 x 70 mm PCB



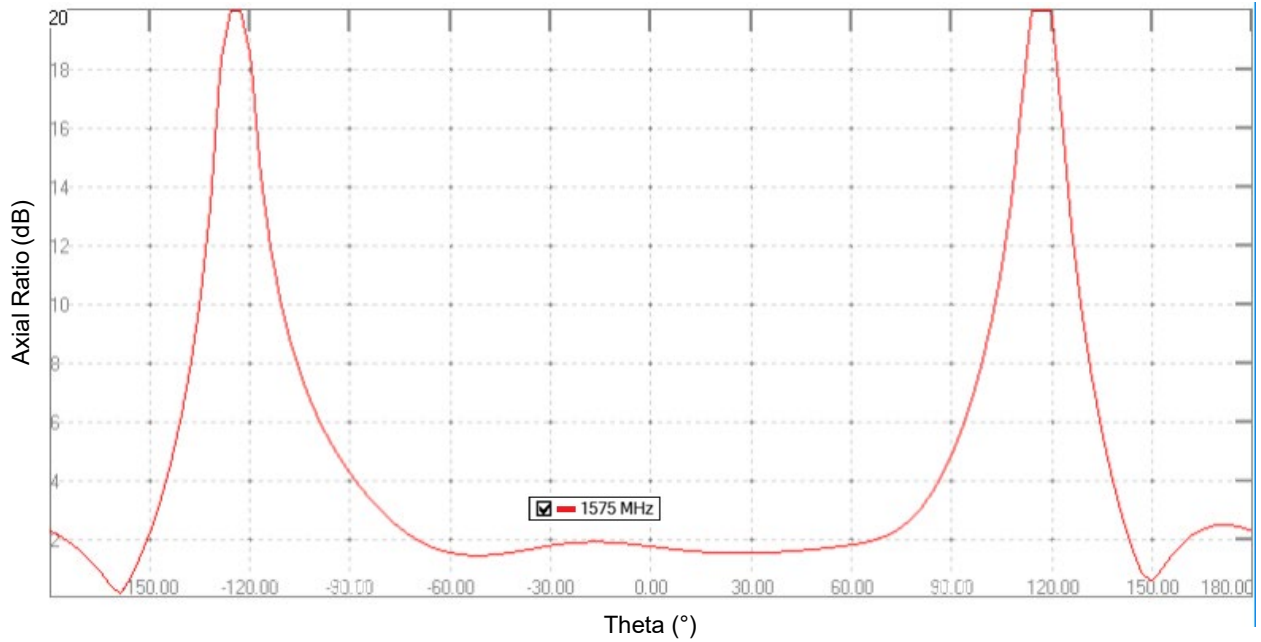
**Antenna Radiation Patterns**  
 Typical performance on 70 x 70 mm PCB  
 Measured @ 1575 MHz



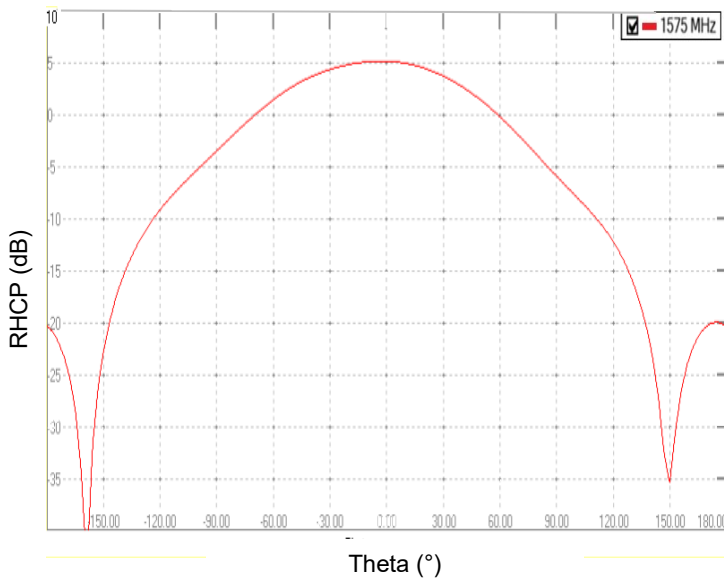
1.575 GHz KYOCERA AVX Embedded Antenna Specifications.  
 KYOCERA AVX produces a wide variety of standard and custom antennas to meet user needs.

**Axial Ratio, RHCP, LHCP Plots**  
 Typical performance on 70 x 70 mm PCB  
 Measured @ 1575 MHz

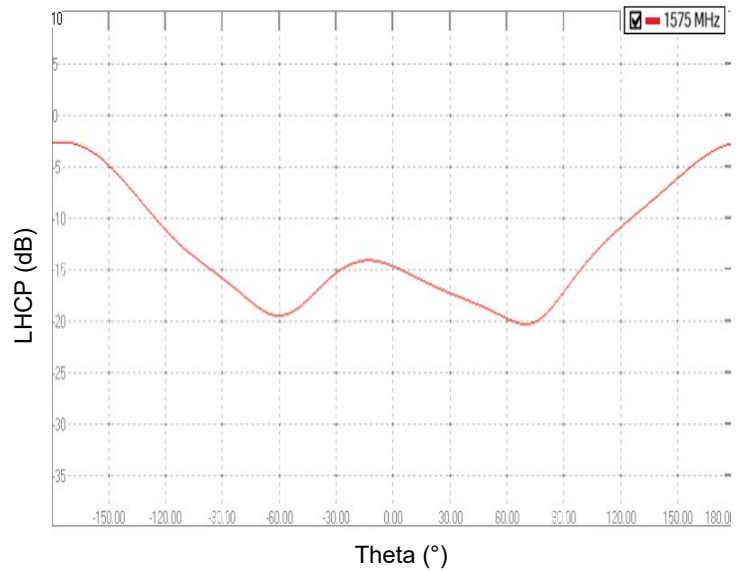
Phi = 0



RHCP



LHCP

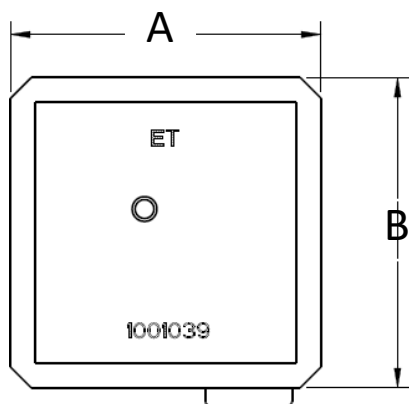


1.575 GHz KYOCERA AVX Embedded Antenna Specifications.  
 KYOCERA AVX produces a wide variety of standard and custom antennas to meet user needs.

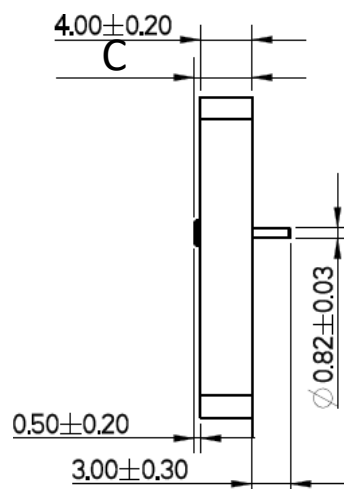
### Mechanical Dimensions

Typical antenna dimensions, in mm.

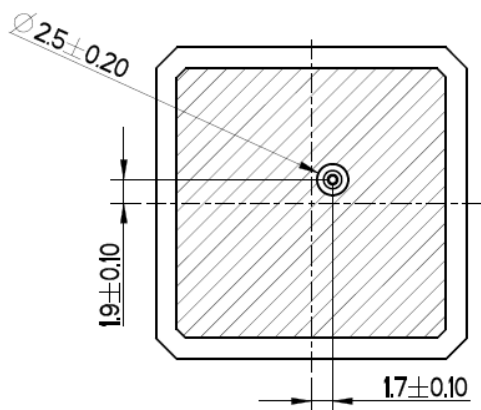
Part Number	A (mm)	B (mm)	C (mm)
1001039	25.0 ± 0.2	25.0 ± 0.2	4.5 ± 0.4



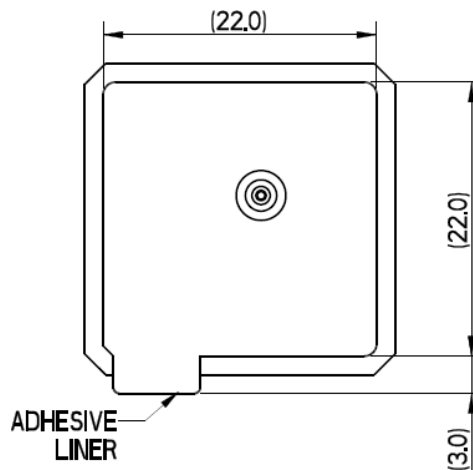
**Top View**



**Side View**



**Bottom View**



**Adhesive Liner View (Bottom)**