

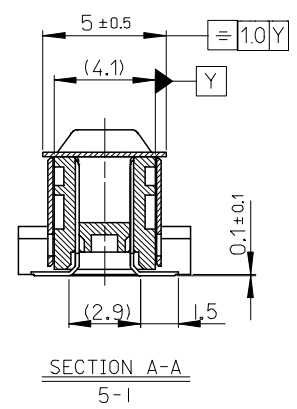
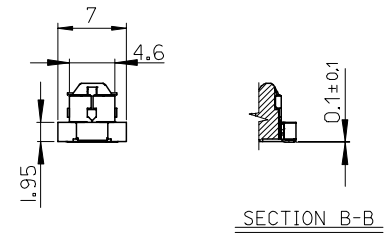
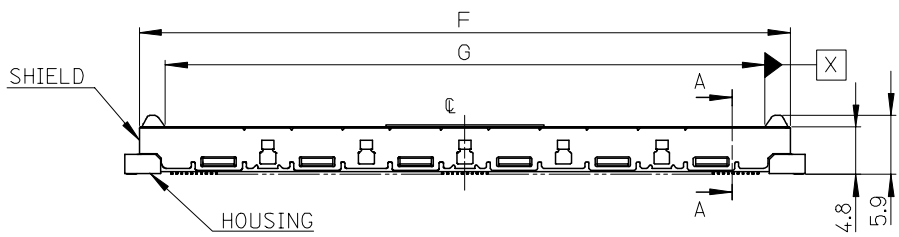
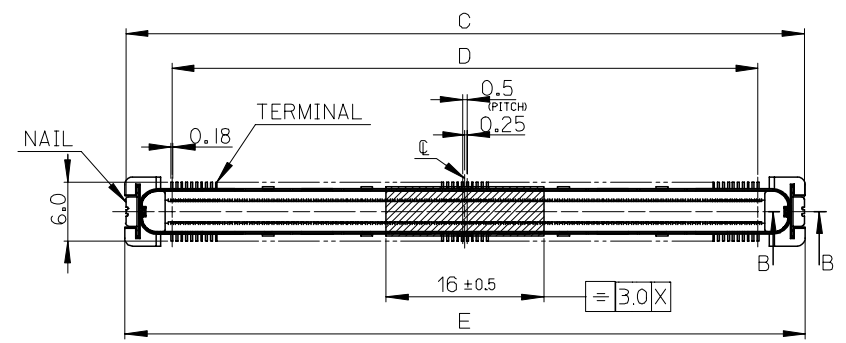
NOTES

1. 材質
MATERIAL
ハウジング : ガラス入りLCP、黒色、UL94V-0
HOUSING : GLASS FILLED LIQUID CRYSTAL POLYMER, BLACK, UL94V-0
ターミナル : 銅合金
TERMINAL : COPPER ALLOY
シールド : ステンレス鋼
SHIELD : STAINLESS STEEL
ネイル : 銅合金
NAIL : COPPER ALLOY
吸着テープ : 耐熱樹脂
VACUUM TAPE : HEAT RESISTING RESIN

2. めっき仕様
PLATING
ターミナル
TERMINAL
接点部 : 金めっき
CONTACT AREA : GOLD
半田付け部 : 錫めっき
SOLDER TAIL AREA : TIN
下地めっき : ニッケルめっき
UNDER-PLATING : NICKEL

ネイル
NAIL
ニッケル下地錫めっき
TIN OVER NICKEL PLATING

3. テールとネイルの平坦度 : 0.1MAX
COPLANARITY : 0.1 MAXIMUM



48.9	39.5	49.1	46.1	40.88	501493-1610	501493-1600	160
58.9	49.5	59.1	56.1	50.88	501493-2010	501493-2000	200
68.9	59.5	69.1	66.1	60.88	501493-2410	501493-2400	240
C	D	E	F	G	TRAY PACKAGE	CONNECTOR	CIRCUIT

REVISED EC NO: J2007-0487 DRWN: AYOYAGI 2006/09/07 CHKD: THARUYAMA 2006/11/01 APPR: NUKITA 2006/11/02	GENERAL TOLERANCES (UNLESS SPECIFIED)		DIMENSION STYLE MM ONLY		SCALE 2:1	DESIGN UNITS METRIC	THIRD ANGLE PROJECTION
	10 UNDER	± 0.2	DRAWN BY YKOBAYASHI		DATE 2004/10/27	TITLE 0.5 B TO B CONN. SHIELD TYPE PLUG ASSY H=6	
	10 OVER 30 UNDER	± 0.25	CHECKED BY HIRATA		DATE 2004/10/27	MOLEX INCORPORATED	
	30 OVER	± 0.3	APPROVED BY MSASAO		DATE 2004/10/27	MATERIAL NO. SEE CHART	
	ANGULAR	± 1 °	MATERIAL NO.		DOCUMENT NO. SD-501493-001	SHEET NO. 1 OF 2	
DRAFT WHERE APPLICABLE MUST REMAIN WITHIN DIMENSIONS		SIZE A3		THIS DRAWING CONTAINS INFORMATION THAT IS PROPRIETARY TO MOLEX INCORPORATED AND SHOULD NOT BE USED WITHOUT WRITTEN PERMISSION			

10 9 8 7 6 5 4 3 2 1

F

E

D

C

B

A

F

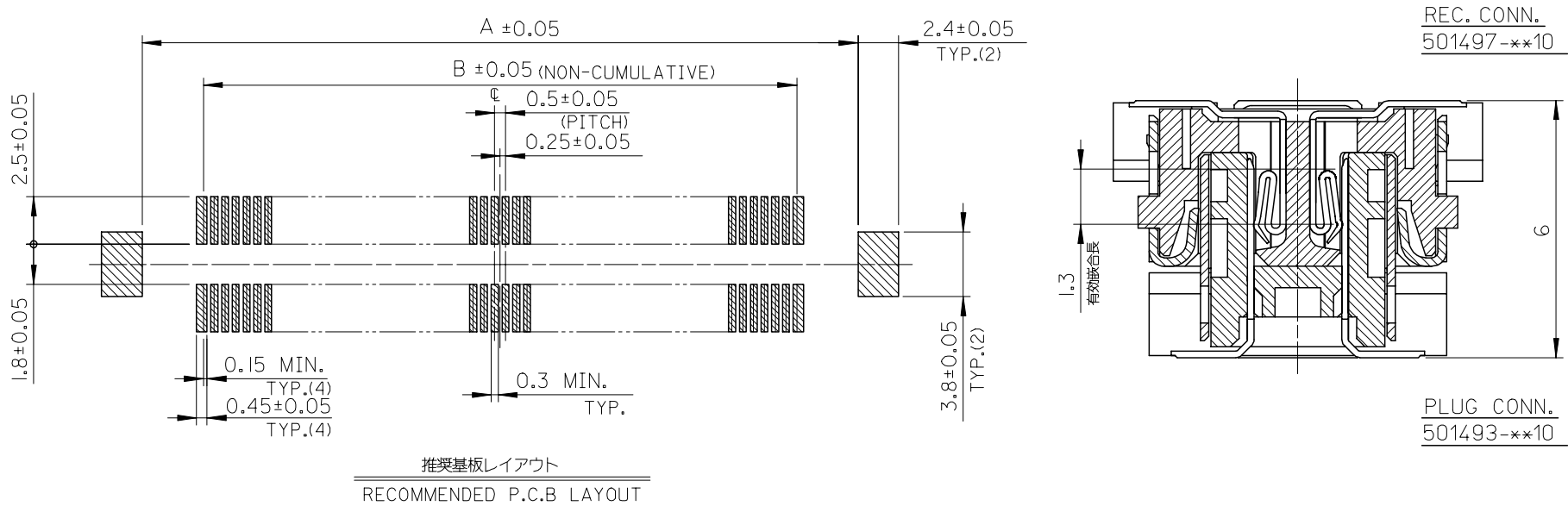
E

D

C

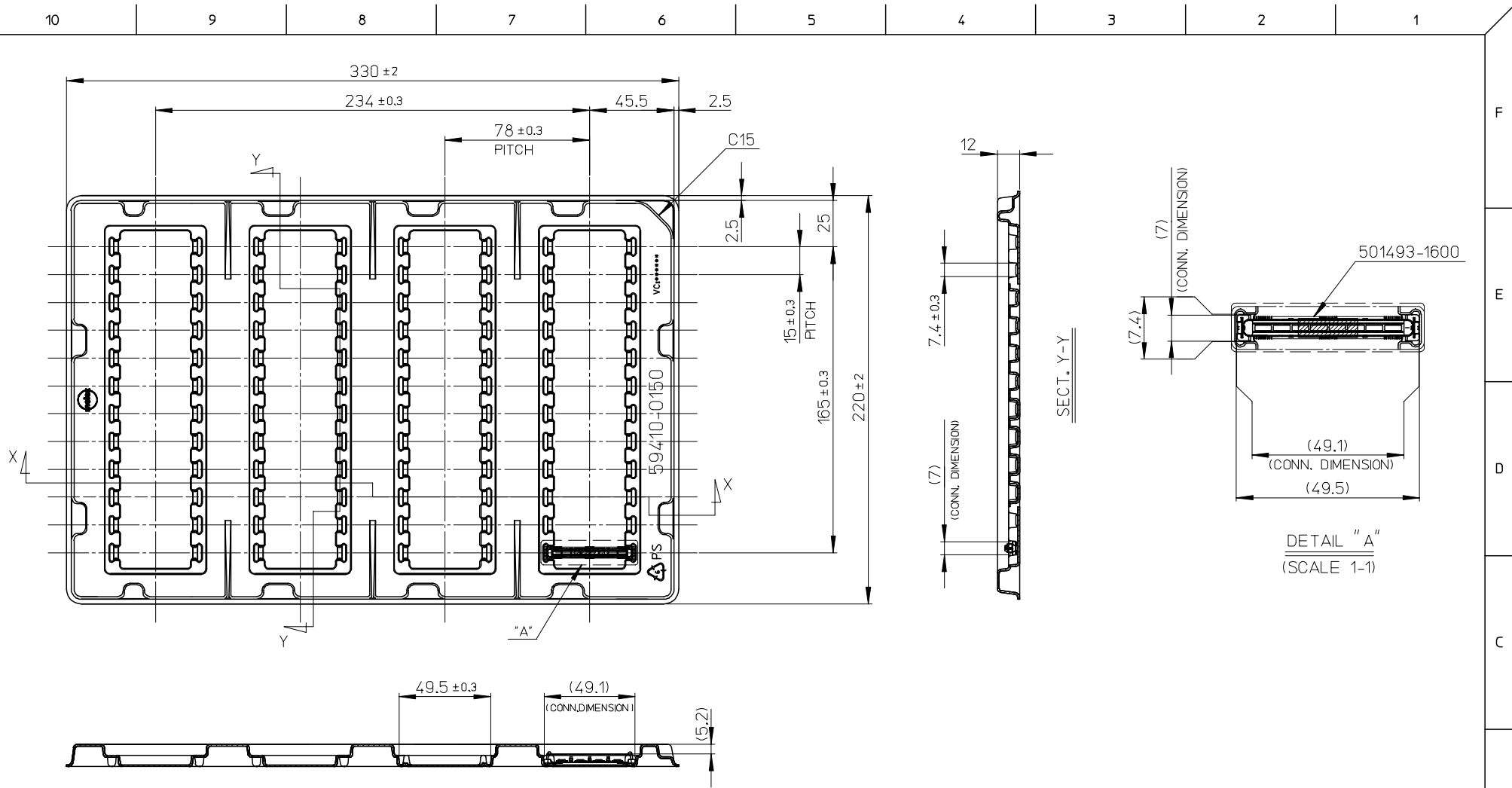
B

A



45.4	39.5	501493-1610	160
55.4	49.5	501493-2010	200
65.4	59.5	501493-2410	240
A	B	TRAY PACKAGE	CIRCUIT

REVISED EC NO: J2007-0487 DRWN: AYOYAGI 2006/09/07 CHKD: THARUYAMA 2006/11/01 APPR: NUKITA 2006/11/02	GENERAL TOLERANCES (UNLESS SPECIFIED)		DIMENSION STYLE MM ONLY		SCALE ---	DESIGN UNITS METRIC	THIRD ANGLE PROJECTION	
	10 UNDER	±0.2	DRAWN BY YKOBAYASHI	DATE 2004/10/27	TITLE 0.5 B TO B CONN. SHIELD TYPE PLUG ASSY H=6			
	10 OVER 30 UNDER	±0.25	CHECKED BY HIRATA	DATE 2004/10/27	MOLEX INCORPORATED			
	30 OVER	±0.3	APPROVED BY MSASAO	DATE 2004/10/27	DOCUMENT NO. SD-501493-001			
ANGULAR ±--- °		DRAFT WHERE APPLICABLE MUST REMAIN WITHIN DIMENSIONS		MATERIAL NO. SEE CHART		SHEET NO. 2 OF 2		
SIZE A3		THIS DRAWING CONTAINS INFORMATION THAT IS PROPRIETARY TO MOLEX INCORPORATED AND SHOULD NOT BE USED WITHOUT WRITTEN PERMISSION						



注記

1. 一般公差: ±0.5
GENERAL TOLERANCES: ±0.5
2. 各部の反りは1.5MAX.
WARP: 1.5MAX.
3. 梱包数: 48個
PACKAGING QUANTITY: 48PCS.
4. 標準梱包数: 720個
STANDARD PACKAGING QUANTITY: 720PCS.
5. トレイは180°反転させて重ねる。
180 DEGREES IS REVERSED AND A TRAY IS PILED UP.

SECT. X-X

501493-1610
適用製品番号
APPLICABLE PART No.

RELEASED EC NO: J2007-1260 DRWN: OTANI 2006/11/01 CHKDM: SOGAYA 2006/11/01 APPR: NUKITA 2006/11/01	GENERAL TOLERANCES (UNLESS SPECIFIED)		DIMENSION STYLE MM ONLY	SCALE 1:2	DESIGN UNITS METRIC	THIRD ANGLE PROJECTION	
	10 UNDER ±0.2 10 OVER 30 UNDER ±0.25 30 OVER ±0.3	ANGULAR ±1°	DRAFT WHERE APPLICABLE MUST REMAIN WITHIN DIMENSIONS	DRAWN BY Y. OTANI DATE 2006/10/30	TITLE TRAY FOR 501493-1610 (0.5 B TO B CONN. SHIELD TYPE PLUG ASSY 160P H=6)	MOLEX INCORPORATED	
	MATERIAL NO. 594100150			APPROVED BY N. UKITA DATE 2006/10/30	DOCUMENT NO. SD-501493-004	SHEET NO. 1 OF 1	
	THIS DRAWING CONTAINS INFORMATION THAT IS PROPRIETARY TO MOLEX INCORPORATED AND SHOULD NOT BE USED WITHOUT WRITTEN PERMISSION						