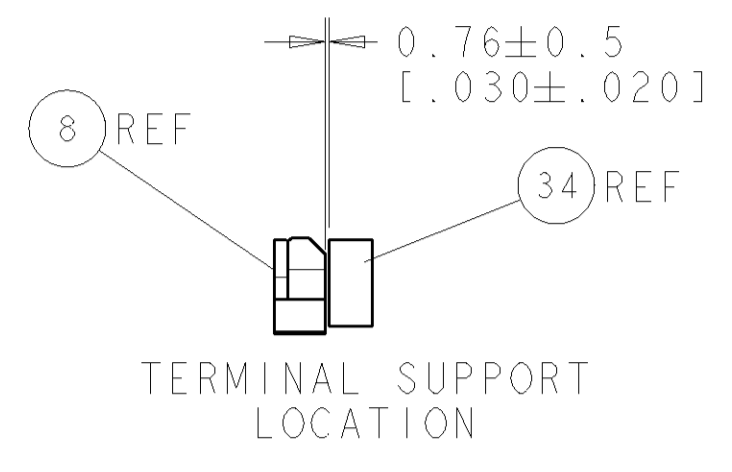
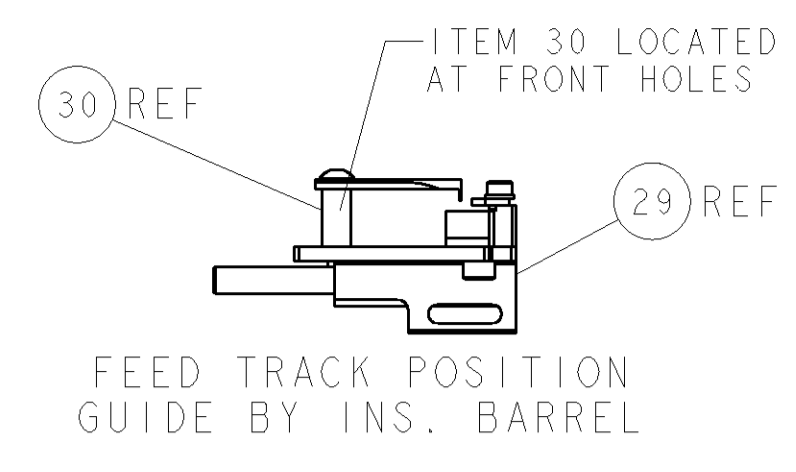
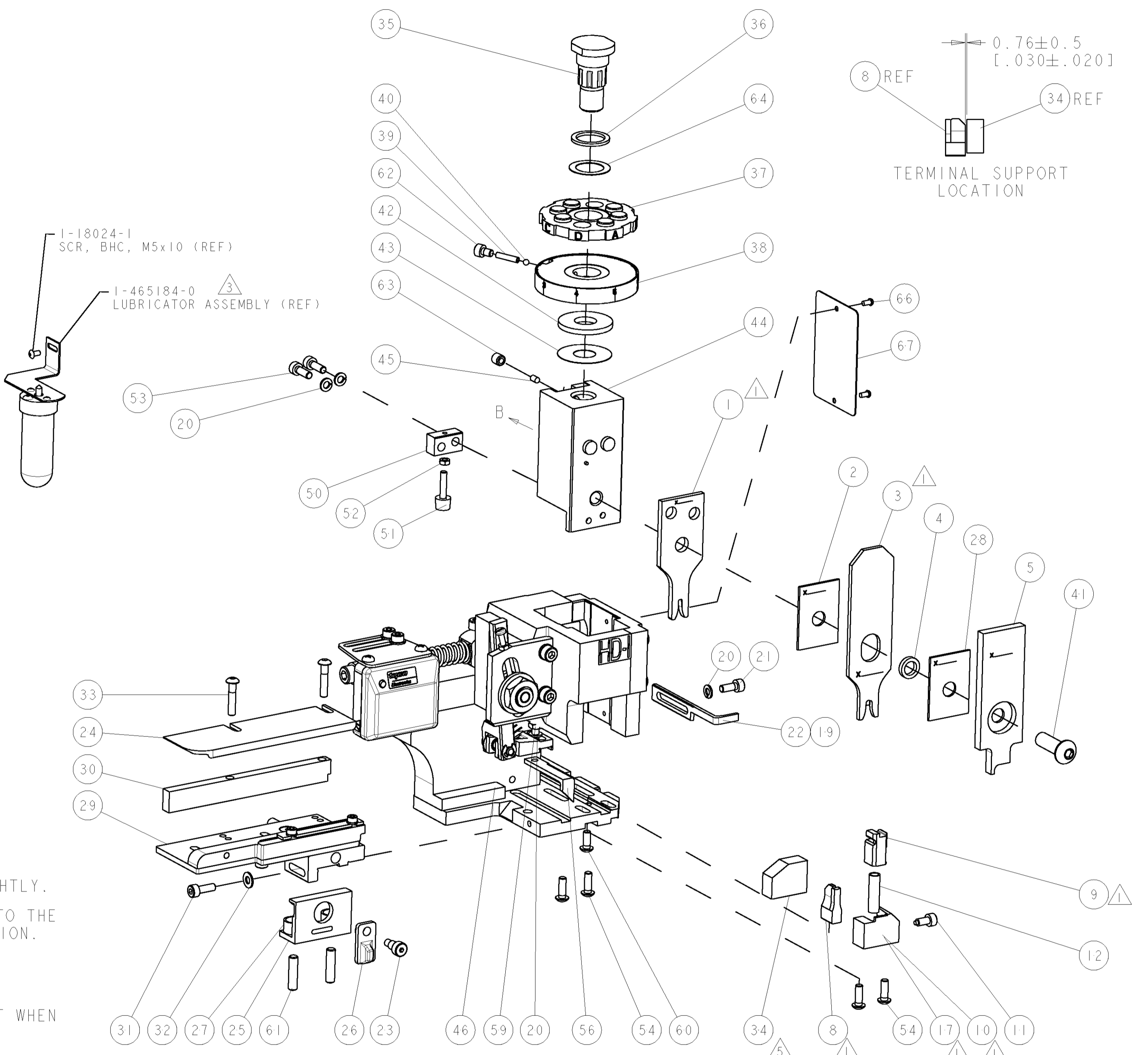
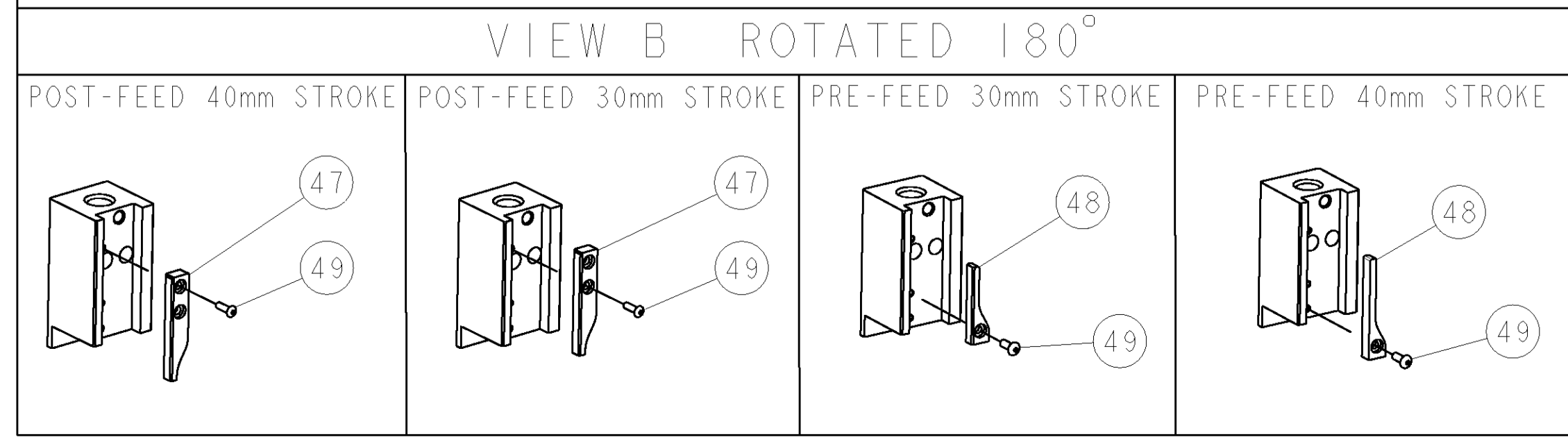


PART NUMBER	REV	TERMINATOR	FEED TYPE	DESCRIPTION
1426651-1	B	LEADMAKER	MECH POST FEED	CUTS CARRIER
1426651-2	B	BENCH	MECH PRE FEED	CUTS CARRIER
1426651-6	B	LEADMAKER	MECH POST FEED	CONTINUOUS CARRIER
7-1426651-1	B	LEADMAKER	MECH POST FEED	-1 AND SPARE PARTS
7-1426651-2	B	BENCH	MECH PRE FEED	-2 AND SPARE PARTS
7-1426651-6	B	LEADMAKER	MECH POST FEED	-6 AND SPARE PARTS
7-1426651-7	A	-	-	SPARE PARTS KIT

CRIMP DATA		JST TERMINAL	TE CRIMP SPECS
TERMINAL NAME: PIN CONTACT, VL CONNECTOR			
CRIMP	SIZE	TYPE	RANGE
WIRE	2.03 [1.080 IN]	F	0.30-1.25mm <sup>2</sup> or 22-16 AWG
INSUL	4.06 [1.160 IN]	OV	1.70-3.20 [1.067-1.126 IN]
WIRE STRIP LENGTH		APPL INSTRUCTIONS	
4.80-5.60 [1.189-.220 IN]		408-8322	
TERMINAL APPL SPEC		FEED [14.00 [1.551 IN]]	
TERMINALS APPLIED			
TE TERM PN	MANUF TERM PN		
1949586-1	SVM-42T-P2.0	5	-
1949587-1	SVF-42T-P2.0	5	-
-	-	-	-
-	-	-	-
WIRE SIZE	CRIMP HEIGHT	PINPN & LENGTH [IN]	
1.00mm <sup>2</sup>	1.27 ± 0.05 [1.050 ± .002 IN]	2-354779-5 [1.3115]	
0.50mm <sup>2</sup>	1.12 ± 0.05 [1.044 ± .002 IN]	3-354779-8 [1.3180]	
0.35mm <sup>2</sup>	1.07 ± 0.05 [1.042 ± .002 IN]	4-354779-2 [1.3200]	

- △ RECOMMENDED SPARE PARTS.
- 2. GREASE RAM, CAM, CAM FOLLOWER AND FEED ROD LIGHTLY.
- △ CERTAIN TERMINALS REQUIRE LUBRICATION. REFER TO THE APPLICATOR INSTRUCTION SHEET FOR MORE INFORMATION.
- 4. LUBRICATE DAILY PER THE APPLICATOR INSTRUCTION SHEET SUPPLIED WITH THE APPLICATOR.
- △ TERMINAL SUPPORT ITEM 34 MAY REQUIRE ADJUSTMENT WHEN CHANGING BETWEEN PIN AND SOCKET.
- △ WIRE AND INSULATION RANGES SHOWN ARE THAT OF THE TERMINAL.
- △ ALL CRIMP DATA CALCULATED BY TYCO ELECTRONICS UK LTD.
- △ 0.35mm<sup>2</sup> WIRE SIZE NOT RECOMMENDED FOR USE BY TYCO ELECTRONICS UK LTD., BUT CAN BE USED AT CUSTOMERS DISCRETION.



SET UP GAGE  
458637-3

REV	DATE	BY	CHK	DESCRIPTION
A	17JAN2008	LJL	MC	SEE ECO-08-001334
B	17JUL2008	MY	TE	ECR-08-017999

REV	DATE	BY	CHK	DESCRIPTION	ITEM NO				
-	-	-	-	-	73				
-	-	-	-	-	72				
-	-	-	-	-	71				
-	-	-	-	-	70				
-	-	-	-	-	69				
-	-	-	-	-	68				
-	-	-	-	-	67				
-	-	-	-	-	66				
-	-	-	-	-	65				
-	-	-	-	-	64				
-	-	-	-	-	63				
-	-	-	-	-	62				
-	-	-	-	-	61				
-	-	-	-	-	60				
-	-	-	-	-	59				
-	-	-	-	-	58				
-	-	-	-	-	57				
-	-	-	-	-	56				
-	-	-	-	-	55				
-	-	-	-	-	54				
-	-	-	-	-	53				
-	-	-	-	-	52				
-	-	-	-	-	51				
-	-	-	-	-	50				
-	-	-	-	-	49				
-	-	-	-	-	48				
-	-	-	-	-	47				
-	-	-	-	-	46				
-	-	-	-	-	45				
-	-	-	-	-	44				
-	-	-	-	-	43				
-	-	-	-	-	42				
-	-	-	-	-	41				
-	-	-	-	-	40				
-	-	-	-	-	39				
-	-	-	-	-	38				
-	-	-	-	-	37				
-	-	-	-	-	36				
-	-	-	-	-	35				
-	-	-	-	-	34				
-	-	-	-	-	33				
-	-	-	-	-	32				
-	-	-	-	-	31				
-	-	-	-	-	30				
-	-	-	-	-	29				
-	-	-	-	-	28				
-	-	-	-	-	27				
-	-	-	-	-	26				
-	-	-	-	-	25				
-	-	-	-	-	24				
-	-	-	-	-	23				
-	-	-	-	-	22				
-	-	-	-	-	21				
-	-	-	-	-	20				
-	-	-	-	-	19				
-	-	-	-	-	18				
-	-	-	-	-	17				
-	-	-	-	-	16				
-	-	-	-	-	15				
-	-	-	-	-	14				
-	-	-	-	-	13				
-	-	-	-	-	12				
-	-	-	-	-	11				
-	-	-	-	-	10				
-	-	-	-	-	9				
-	-	-	-	-	8				
-	-	-	-	-	7				
-	-	-	-	-	6				
-	-	-	-	-	5				
-	-	-	-	-	4				
-	-	-	-	-	3				
-	-	-	-	-	2				
-	-	-	-	-	1				
-77	-76	-72	-71	-6	-2	-1	PART NO	DESCRIPTION	ITEM NO
-	-	-	-	-	-	-	-	-	84
-	-	-	-	-	-	-	-	-	83
-	-	-	-	-	-	-	-	-	82
-	-	-	-	-	-	-	-	-	81
-	-	-	-	-	-	-	-	-	80
-	-	-	-	-	-	-	-	-	79
-	-	-	-	-	-	-	-	-	78
-	-	-	-	-	-	-	-	-	77
-	-	-	-	-	-	-	-	-	76
-	-	-	-	-	-	-	-	-	75
-	-	-	-	-	-	-	-	-	74

DIMENSIONS: mm [IN]		TOLERANCES UNLESS OTHERWISE SPECIFIED:	
9 PLC	±	9 PLC	±
1 PLC	±	1 PLC	±
3 PLC	±	3 PLC	±
4 PLC	±	4 PLC	±
ANGLES	±	ANGLES	±
MATERIAL	FINISH	WEIGHT	SCALE
-	-	-	3:5

DATE	04DEC2007	BY	LOTHOUSE
DATE	04DEC2007	BY	CLIFFORD
PRODUCT SPEC	SIDE FEED HDI APPLICATOR		
APPLICATION SPEC	See Table		
SIZE	CAGE CODE	DRAWING NO	RESTRICTED TO
A1	00779	1426651	-
CUSTOMER DRAWING	SCALE	SHEET	REV
-	3:5	1	B