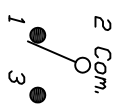
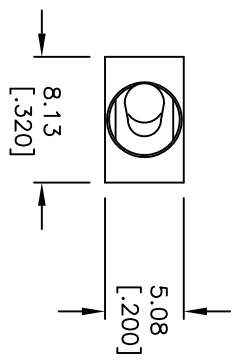


RECOMMENDED PCB LAYOUT



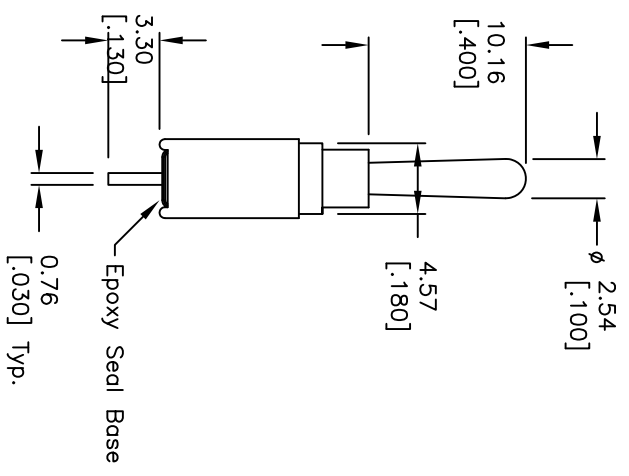
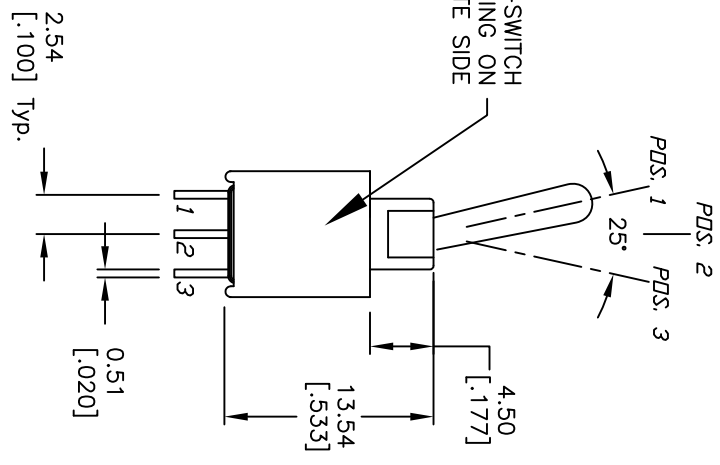
CIRCUIT: SPDT
CONTACT CONFIGURATION

SWITCH FUNCTION			
PDS. 1	PDS. 2	PDS. 3	
DN	NONE	DN	
2-3	OPEN	2-1	

NOTES:

1. ALL DIMENSIONS IN MM [INCH]
2. GENERAL TOLERANCE: X.X=±0.4
X.XX=±0.25
3. TERMINAL NUMBERS FOR REF ONLY
4. RATING: 3A @120V AC or 28VDC;
1A @250VAC.
5. FIXED TERM. & MOVING CONTACT:
Copper Alloy w/Silver plate.
at full load.
6. ELECTRIC LIFE: 50,000 make-and-break cycles
7. INSULATION RESISTANCE: 1,000 Mega-ohm min.
8. DIELECTRIC STRENGTH: 1,000 V RMS @sea level.
9. OPERATING TEMP.: -30C to +85C

E-SWITCH
MARKING ON
OPPOSITE SIDE



2004 WMSPI11A1M2QE

REV.	ECN No.	DESCRIPTION	DATE	CHKD
D	21002	13.54 WAS 13.39	2/4/13	EBP
C	12200	REVISED AND REDRAWN	5/31/02	CB

TITLE	SCALE	DATE	DR	DWG	REV
2004 WMSPI11A1M2QE	2:1	5/31/02	CB	T201104	D

THE INFORMATION CONTAINED IN THIS DOCUMENT IS PROPRIETARY TO E-SWITCH AND IS NOT TO BE COPIED OR TRANSFERRED