

# Customer Information Sheet

DRAWING No.: S1971-46R

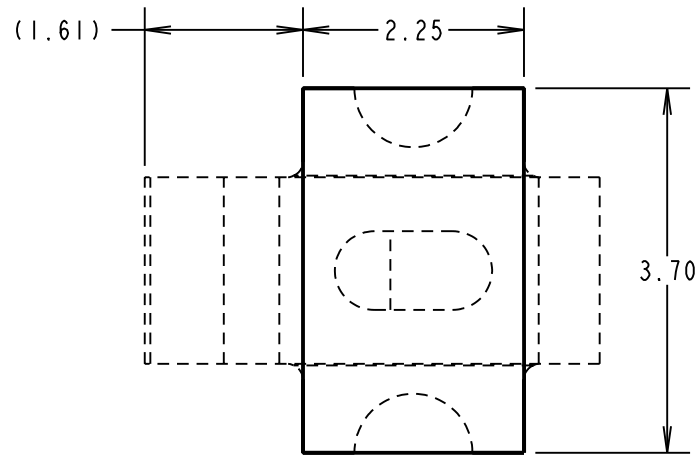
IF IN DOUBT - ASK

©

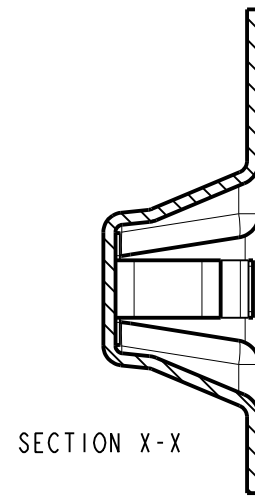
NOT TO SCALE

THIRD ANGLE PROJECTION

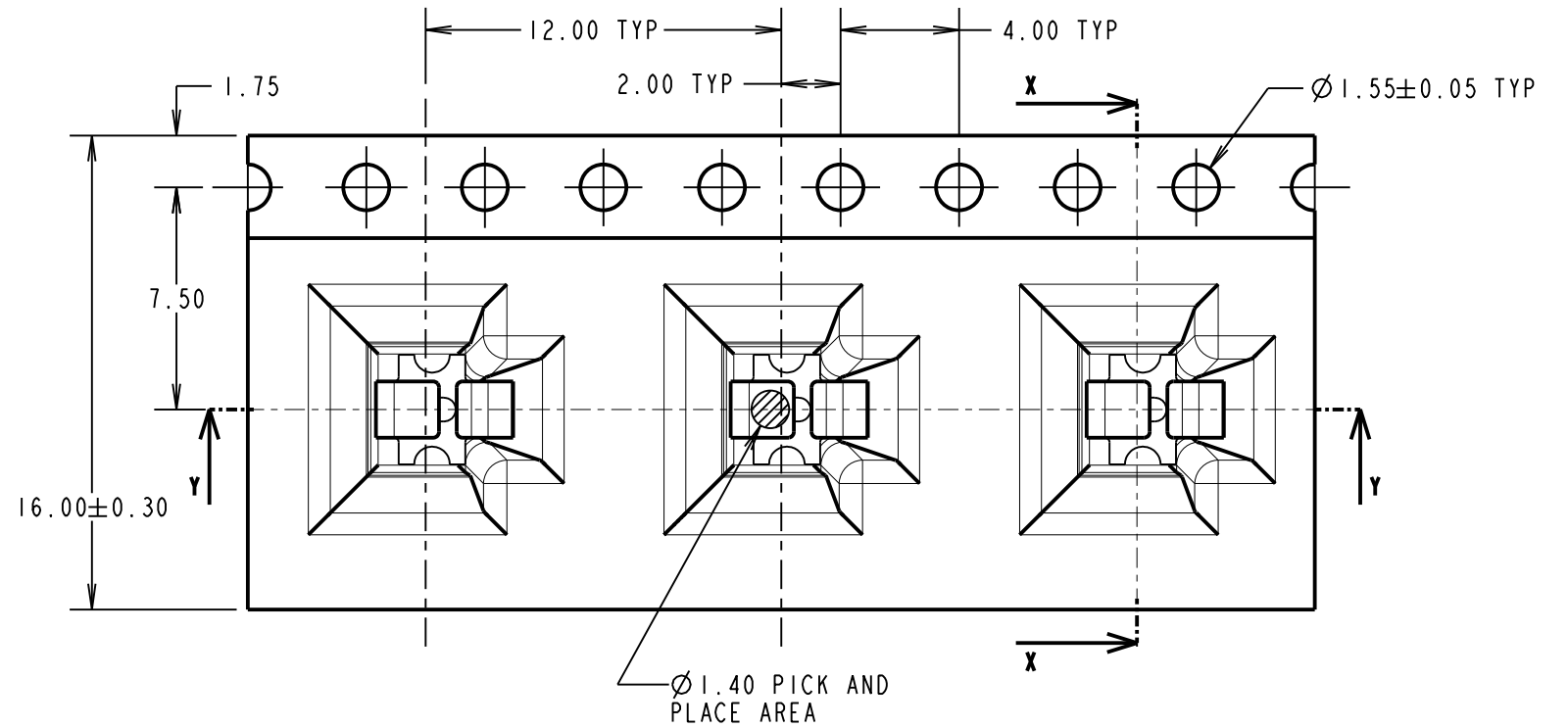
ALL DIMENSIONS IN mm



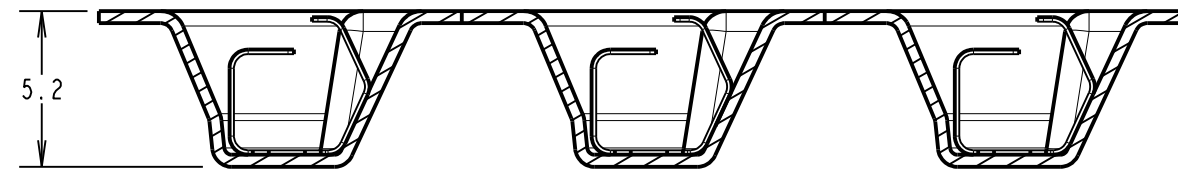
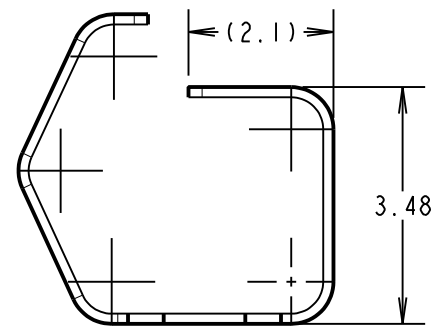
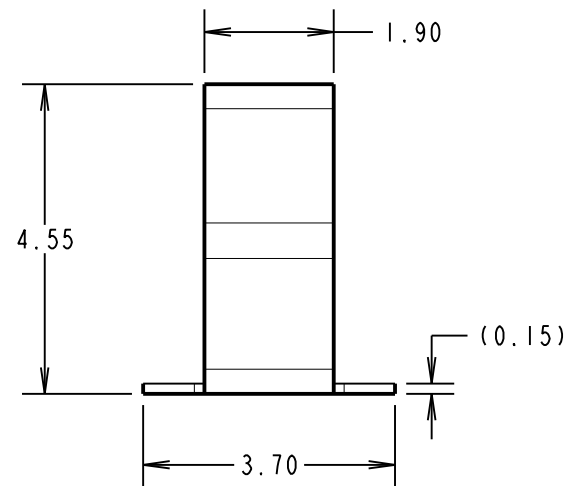
RECOMMENDED PCB PAD LAYOUT  
(TOLERANCES  $\pm 0.05$ )



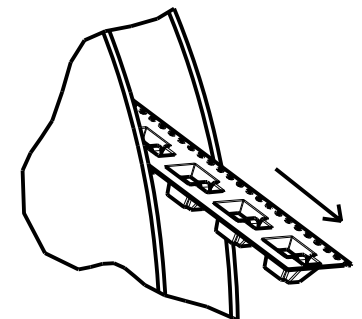
SECTION X-X



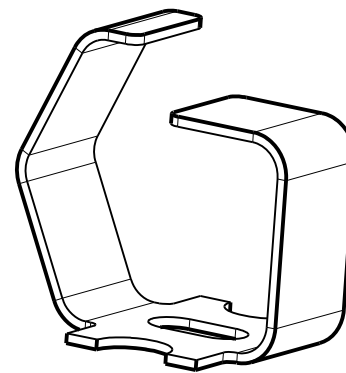
- NOTES:  
 1. QUANTITY OF COMPONENTS PER REEL = 1000.  
 2. THIS PRODUCT IS TAPED AND REELED IN ACCORDANCE WITH EIA-481 (ELECTRONICS INDUSTRIES ASSOCIATION).



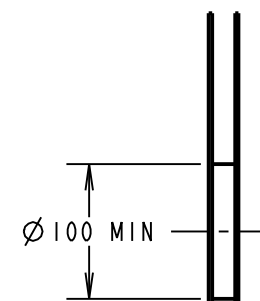
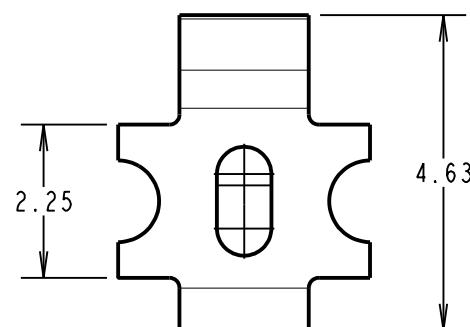
SECTION Y-Y



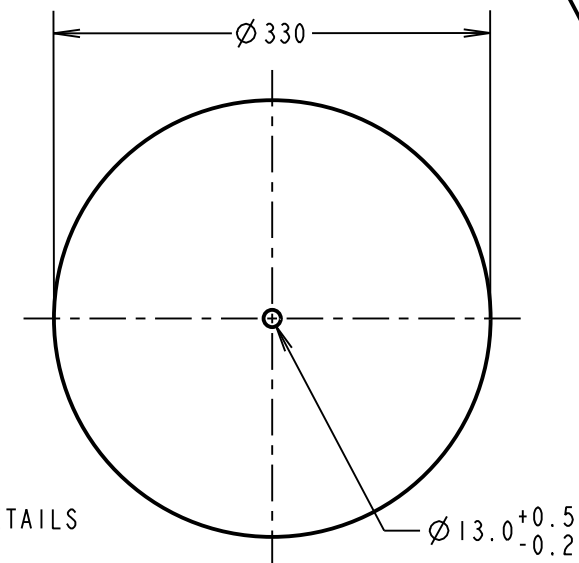
FINISHED REELING DIRECTION



COMPONENT DETAILS



REEL DETAILS



|                |      |            |       |
|----------------|------|------------|-------|
| RTP            | 3    | 05.10.21   | 31009 |
| NAME           | ISS. | DATE       | CN/CO |
| APPROVED:      |      | R.PORTLOCK |       |
| CHECKED:       |      | M.RUDKIN   |       |
| DRAWN:         |      | R.PORTLOCK |       |
| CUSTOMER REF.: |      |            |       |
| ASSEMBLY DRG:  |      |            |       |

**HARWIN**

www.harwin.com  
technical@harwin.com

THIS DRAWING AND ANY INFORMATION OR DESCRIPTIVE MATTER SET OUT HEREON ARE CONFIDENTIAL AND COPYRIGHT PROPERTY OF THE HARWIN GROUP AND MUST NOT BE DISCLOSED, LOANED, COPIED OR USED FOR MANUFACTURING, TENDERING OR FOR ANY OTHER PURPOSE WITHOUT THEIR WRITTEN PERMISSION.

TOLERANCES

X. =  $\pm 1$ mm  
 X.X =  $\pm 0.50$ mm  
 X.XX =  $\pm 0.20$ mm  
 X.XXX =  $\pm 0.01$ mm  
 ANGLES =  $\pm 5^\circ$   
 UNLESS STATED

MATERIAL:

SEE SHEET 3

FINISH:

SEE SHEET 3

S/AREA:

mm<sup>2</sup>

TITLE:

MULTI-DIRECTIONAL SPRING CONTACT  
IN TAPE AND REEL

DRAWING NUMBER:

S1971-46R

SHT  
2 OF 3

# Customer Information Sheet

DRAWING No.: S1971-46R

IF IN DOUBT - ASK

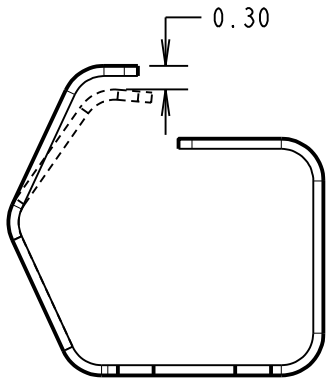
©

NOT TO SCALE

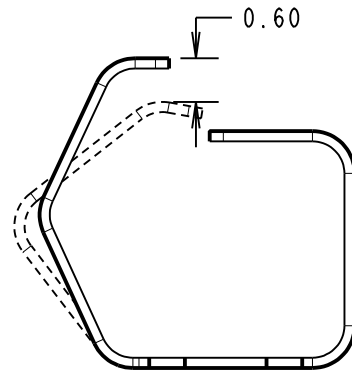
THIRD ANGLE PROJECTION

ALL DIMENSIONS IN mm

S1971-46R  
DEFLECTION FROM ABOVE

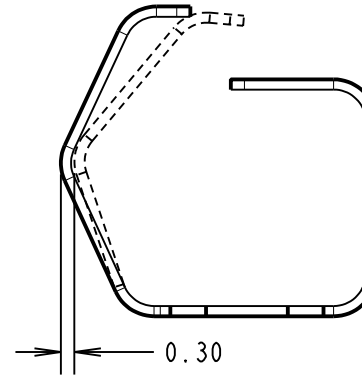


RECOMMENDED WORKING HEIGHT  
DEFLECTION = 0.30mm,  
MINIMUM FORCE OF 1.2N

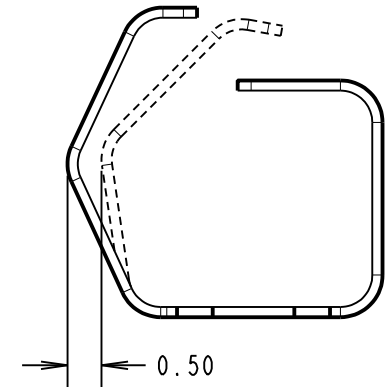


RECOMMENDED MINIMUM HEIGHT  
DEFLECTION = 0.60mm

S1971-46R  
DEFLECTION FROM FRONT



RECOMMENDED WORKING LENGTH  
DEFLECTION = 0.30mm



RECOMMENDED MINIMUM LENGTH  
DEFLECTION = 0.50mm

COMPONENT SPECIFICATION:

MATERIAL = CUPRO NICKEL  
FINISH = 3µm 100% TIN OVER 2µm NICKEL

ELECTRICAL:

CURRENT RATING = 14A  
CONTACT RESISTANCE = 2mΩ MAX.

MECHANICAL:

DURABILITY = 5,000 CYCLES  
OPERATING TEMPERATURE: -55°C to +125°C

|                |      |            |       |
|----------------|------|------------|-------|
| RTP            | 3    | 05.10.21   | 31009 |
| NAME           | ISS. | DATE       | CN/CO |
| APPROVED:      |      | R.PORTLOCK |       |
| CHECKED:       |      | M.RUDKIN   |       |
| DRAWN:         |      | R.PORTLOCK |       |
| CUSTOMER REF.: |      |            |       |
| ASSEMBLY DRG:  |      |            |       |

## HARWIN

www.harwin.com  
technical@harwin.com

THIS DRAWING AND ANY INFORMATION OR DESCRIPTIVE MATTER SET OUT HEREON ARE CONFIDENTIAL AND COPYRIGHT PROPERTY OF THE HARWIN GROUP AND MUST NOT BE DISCLOSED, LOANED, COPIED OR USED FOR MANUFACTURING, TENDERING OR FOR ANY OTHER PURPOSE WITHOUT THEIR WRITTEN PERMISSION.

TOLERANCES

X. = ±1mm  
X.X = ±0.50mm  
X.XX = ±0.20mm  
X.XXX = ±0.01mm

ANGLES = ±5°  
UNLESS STATED

MATERIAL:

SEE ABOVE

FINISH:

SEE ABOVE

S/AREA:

mm<sup>2</sup>

TITLE:

MULTI-DIRECTIONAL SPRING CONTACT  
IN TAPE AND REEL

DRAWING NUMBER:

S1971-46R

SHT  
3  
OF  
3