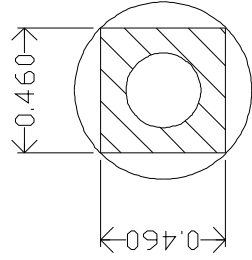
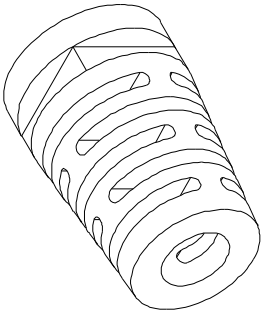
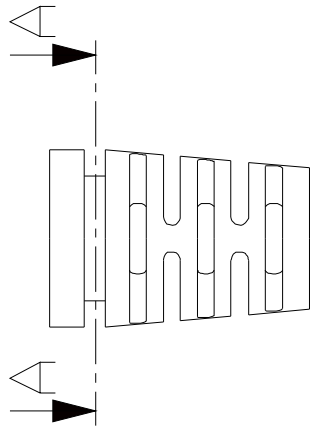
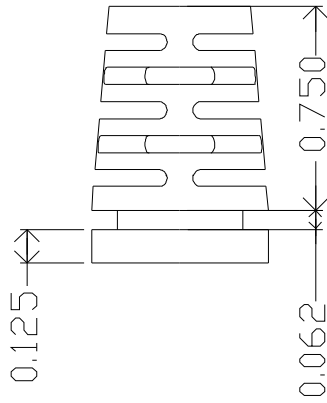
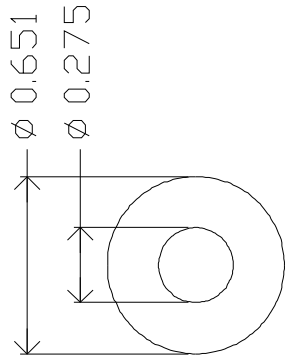


ZONE	REV.	DESCRIPTION	DATE	APPROVED



MOLD MATERIAL: ISC P/N: 5000214, PVC, M1472. Black, RoHS

DRAWN	CHECKED	ENG APPR	MFG APPR	Q.A.	COMMENTS:
R FIERRO					
DIMENSIONS ARE IN INCHES					
TOLERANCES:					
FRACTIONAL ±					
ANGULAR: MACH ± BEND ±					
TWO PLACE DECIMAL ±					
THREE PLACE DECIMAL ±					
MATERIAL: --					
FINISH: --					
NEXT ASSY USED ON					
APPLICATION					
DO NOT SCALE DRAWING					
ISC Engineering 4351 Schaefer Ave, Chino, CA 91710 Ph: 909-596-3315 Fax: 909-596-3335 www.iscengineering.com www.overnatooling.com			DATE: 01/18/05		
ROUND, MULTIFLEX					
1461080-275-B-460X460-651-0					
SIZE/DWG. NO. 1467296					
REV. A					
SCALE: 1 WEIGHT: SHEET 1 OF 1					

Dimensions are subject to change.  
 PROPRIETARY AND CONFIDENTIAL  
 THE INFORMATION CONTAINED IN THIS  
 DRAWING IS THE SOLE PROPERTY OF  
 ISC ENGINEERING. ANY REPRODUCTION IN  
 PART OR AS A WHOLE WITHOUT THE WRITTEN  
 PERMISSION OF ISC ENGINEERING IS  
 PROHIBITED.

