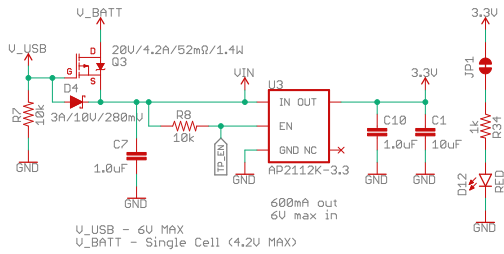
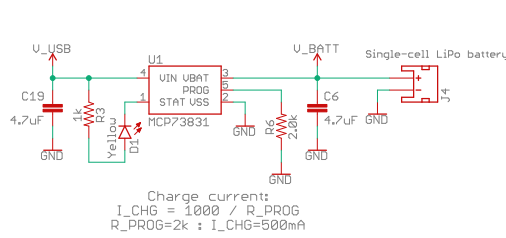


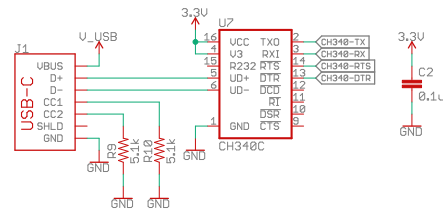
### System Regulator



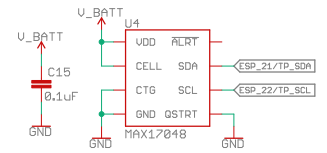
### Lithium-Polymer Battery Charger



### USB-to-Serial Converter



### Fuel Gauge

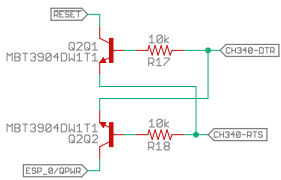


### Auto-Reset

#### Boot Mode Configuration

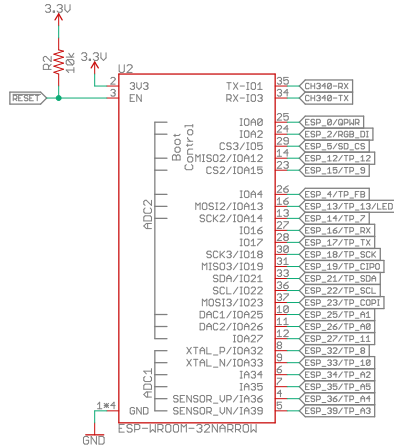
Pin	Run	Bootloader	Default
I00	1	0	1
I02	x	0	0
I05	1	x	1
I012	0	0	0
I015	x	x	1

I012 = MDTI, I015 = MDTO



If DTR is LOW, toggling RTS from HIGH to LOW resets to run mode.  
If RTS is HIGH, toggling DTR from LOW to HIGH resets to bootloader.

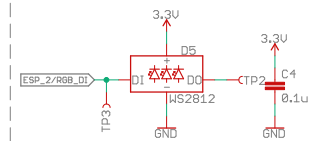
### Espressif ESP32



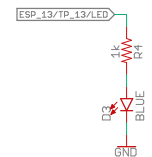
Use boot control pins with cautions 0, 2, 5, 12, 15  
I00: Avoid device connections. Can be used as a stat LED.  
I02: Avoid external pullups - will cause bootloader fail.  
I05: Has builtin pullup at POR.  
I012: Avoid external pullups - will cause bootloader fail.  
I015: Has builtin pullup at POR.

ADC2 has problems when WiFi is enabled.

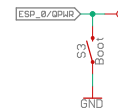
### RGB Status LED



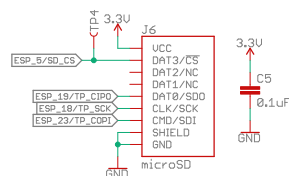
### Status LED



### GPIO0/Boot Button



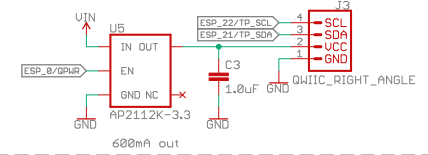
### microSD Connector



### Reset Button



### Quic Connector



### ThingPlus Form Factor

