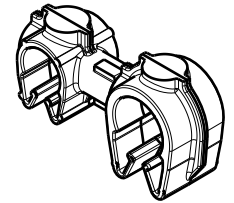
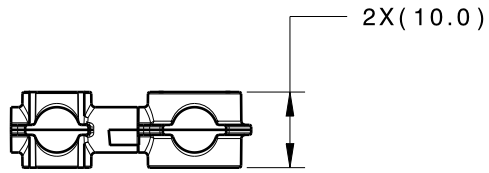
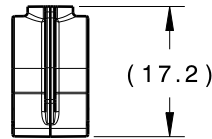
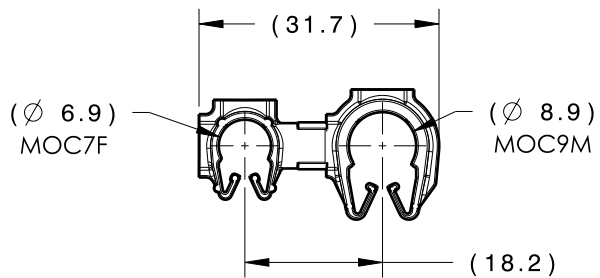


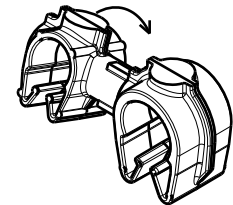
| Revision Level | | | Revision Record | Changed | Date | Approved | Date |
|----------------|----------------|------|-----------------|---------|----------|----------|----------|
| Drawing | State | Part | | | | | |
| 01.2 | DESIGN RELEASE | | SEE ECN# 014407 | FDS | 04/23/18 | EJH | 04/23/18 |



ISOMETRIC VIEW



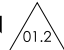
CLIPS ROTATE 360 DEGREES



ISOMETRIC VIEW ROTATED

| TYPE | MOC7F | MOC9M |
|----------------|-------------|--------------|
| HARNESS | 6.5MM-7.5MM | 8.5MM-10.0MM |
| HOSE | 6.0MM-7.5MM | 8.0MM-10.0MM |
| HARD PIPE/TUBE | 7.0MM-8.0MM | 9.0MM-10.0MM |

*RECOMMENDED SIZES MAY DIFFER DEPENDING ON THE APPLICATION, PRODUCT REQUIREMENTS AND MATERIALS USED

| GLOBAL PART DESCRIPTION  | MOC7F | | | MOC9M | | |
|---|-----------------|-----------|-------|-----------------|-----------|-------|
| | DRAWING | MATERIAL | COLOR | DRAWING | MATERIAL | COLOR |
| MOC7FMOC9M-PA66HIRHS-BK | 16-0315-000-CSU | PA66HIRHS | BLACK | 16-0317-000-CSU | PA66HIRHS | BLACK |

| | | | | | | | | | |
|--|-------------------------------------|--|------------------------|-----|---------|-----------------|--|---|---------|
| Material SEE CHART COLOR: SEE CHART | Units millimeters | The copyright of this drawing is reserved by HellermannTyton. It is issued on condition that it is not reproduced, copied or disclosed to a third party, either wholly or in part, without the consent of HellermannTyton. | Drawn | TAT | 2/21/17 | Article/Type-No | MOC7FMOC9M | Scale | 1:1 |
| | Tolerance defined on each dimension | | Approved | EJH | 2/28/17 | Title |  7MM MOC COUPLED TO A 9MM MOC | Project Number | 16-0326 |
| | | | HellermannTyton | | | Drawing-No | PRODUCTION : Phase |  | Format |
| North America Email: corp@htamericas.com Web: www.hellermann.tyton.com | | | 16-0326-223-CSU | | Sheet | 1/1 | | | |