

ITEM	PART#	DESCRIPTION	QTY	UOM
A, B	510470500	PicoBlade1.25 Plug Hsg 5P	2	PC
C	501338000	PicoBlade1.25 Crimp Plug Term Chain	10	PC
D	--	Blank label 12.7x35.5mm (WHT:12.7mm) HF	1	PC

FROM	TO	DESCRIPTION	COLOR
A1	B5	CABLE 28 AWG UL 1061 BLACK	BLACK
A2	B4	CABLE 28 AWG UL 1061 BLACK	BLACK
A3	B3	CABLE 28 AWG UL 1061 BLACK	BLACK
A4	B2	CABLE 28 AWG UL 1061 BLACK	BLACK
A5	B1	CABLE 28 AWG UL 1061 BLACK	BLACK

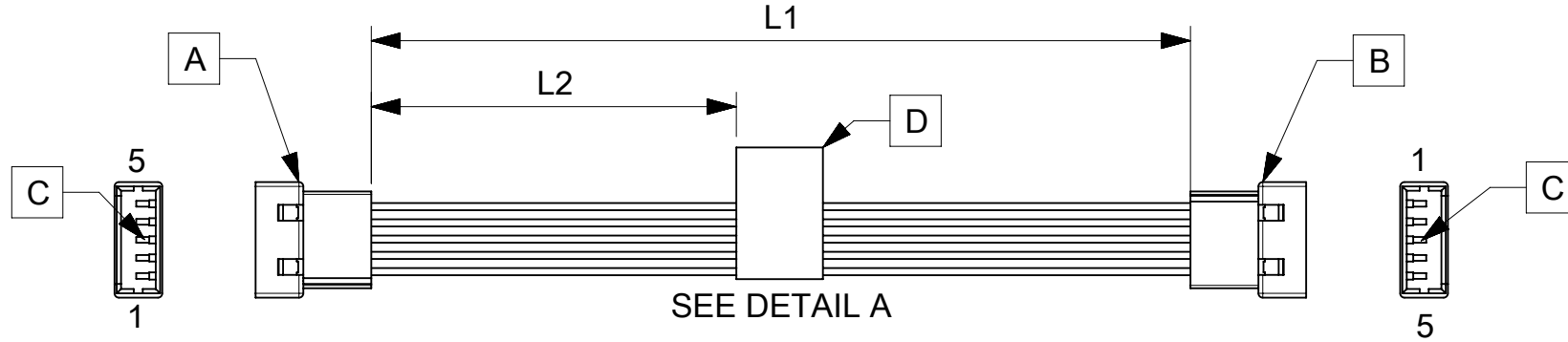
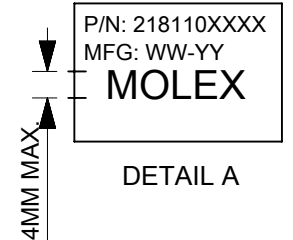


TABLE			
PART NUMBER	L1	L2 (REF)	TITLE
2181100500	75±5	30	5 CIRCUIT PICOBLADE P:P CABLE 75MM
2181100501	150±6	70	5 CIRCUIT PICOBLADE P:P CABLE 150MM
2181100502	225±6	105	5 CIRCUIT PICOBLADE P:P CABLE 225MM
2181100503	300±8	145	5 CIRCUIT PICOBLADE P:P CABLE 300MM
2181100504	425±8	205	5 CIRCUIT PICOBLADE P:P CABLE 425MM



- NOTES
1. Cable assembly to be tested 100% for continuity and polarity.
 2. Connector view shown is from mating side.
 3. Label text must be 2mm max. in height with Arial font.
 4. Label must be wrapped in flag type on the cables.

FUNCTIONAL SYMBOLS $\frac{E}{A} = 0$ $\frac{E}{E} = 0$ $\frac{E}{P} = 0$ DIVISIONAL SYMBOLS	THIS DRAWING CONTAINS INFORMATION THAT IS PROPRIETARY TO MOLEX ELECTRONIC TECHNOLOGIES, LLC AND SHOULD NOT BE USED WITHOUT WRITTEN PERMISSION		CURRENT REV DESC:		
	DIMENSION UNITS	SCALE	EC NO: 659320		
	mm	NTS	DRWN: ARAJU 2021/03/04		
	GENERAL TOLERANCES (UNLESS SPECIFIED)		CHK'D: RDESAI01 2021/03/26		
ANGULAR TOL ± °		APPR: RDESAI01 2021/03/26		PRODUCT CUSTOMER DRAWING	
4 PLACES ±		INITIAL REVISION:		DOCUMENT NUMBER	DOC TYPE
3 PLACES ±		DRWN: ARAJU 2021/03/04		2181100500	PSD
2 PLACES ±		APPR: RDESAI01 2021/03/26		000	REVISION
1 PLACE ±		DRAFT WHERE APPLICABLE MUST REMAIN WITHIN DIMENSIONS		1	A
0 PLACES ±		THIRD ANGLE PROJECTION	DRAWING	SERIES	MATERIAL NUMBER
			A4-SIZE	218110	SEE TABLE
					CUSTOMER
					GENERAL MARKET
					SHEET NUMBER
					1 OF 1

REVISION			
DATE	REV	DESCRIPTION	CHANGER
04/03/2021	A	INITIAL RELEASE	ARAJU

DOCUMENT STATUS	P1	RELEASE DATE	2021/03/26	04:03:36
-----------------	----	--------------	------------	----------