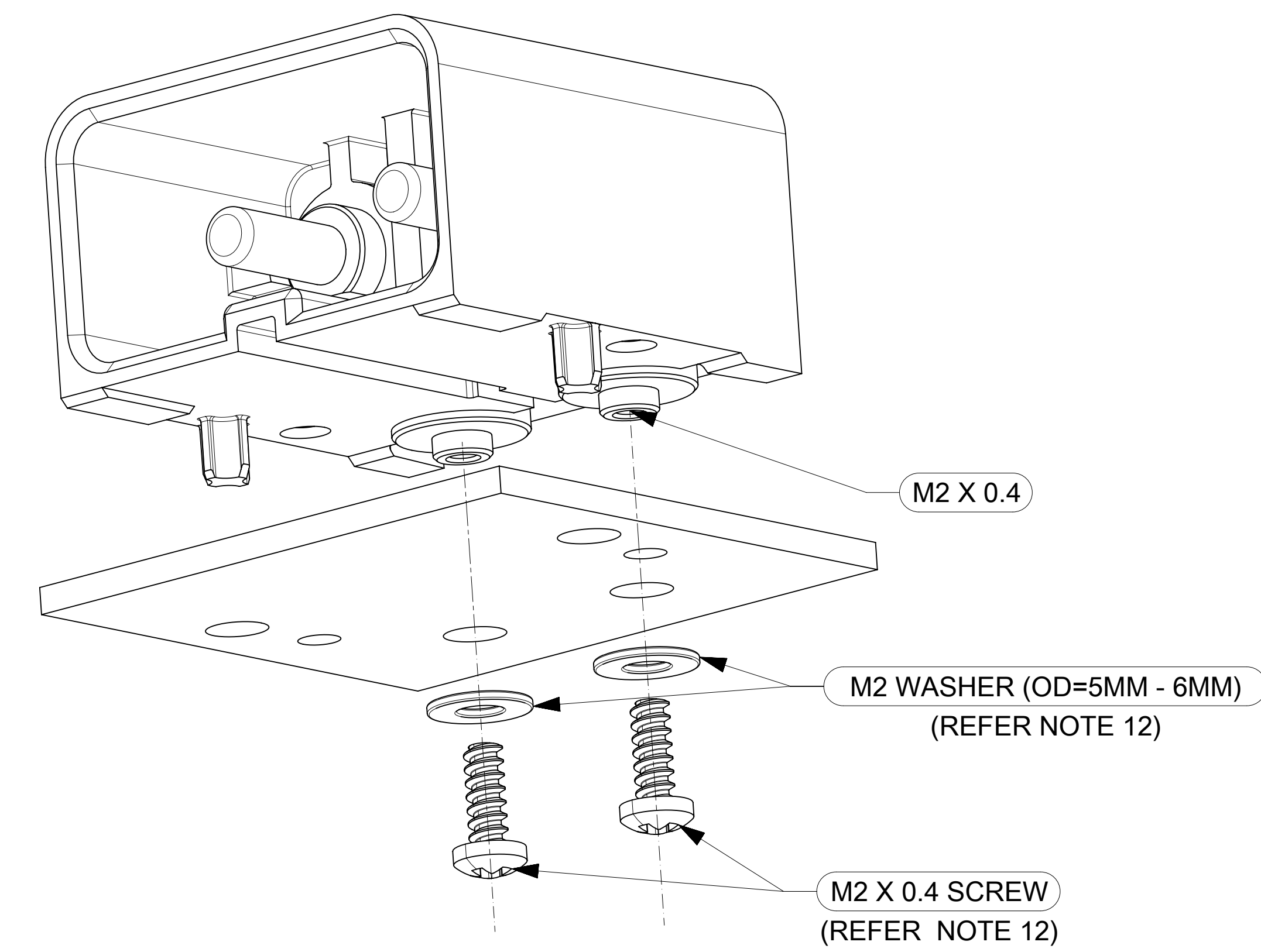
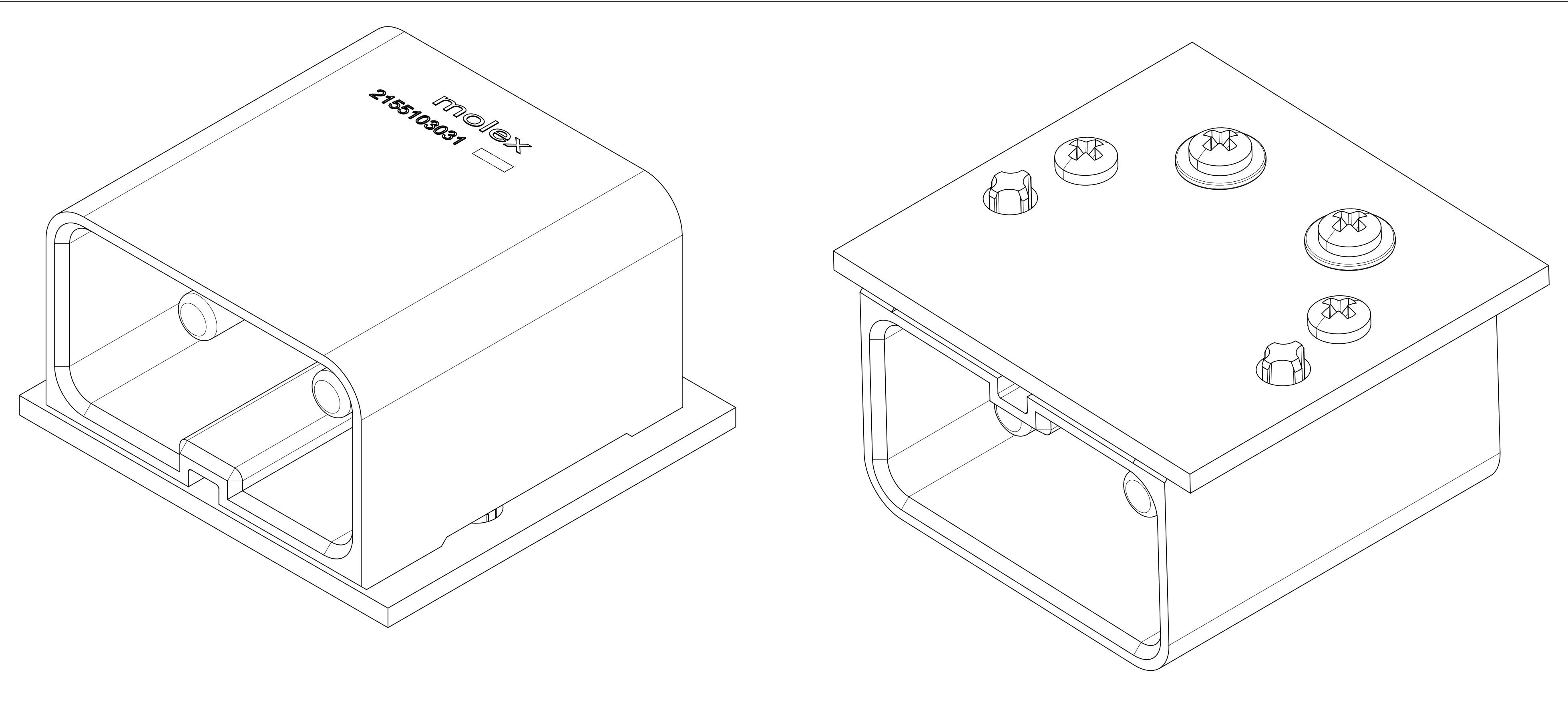
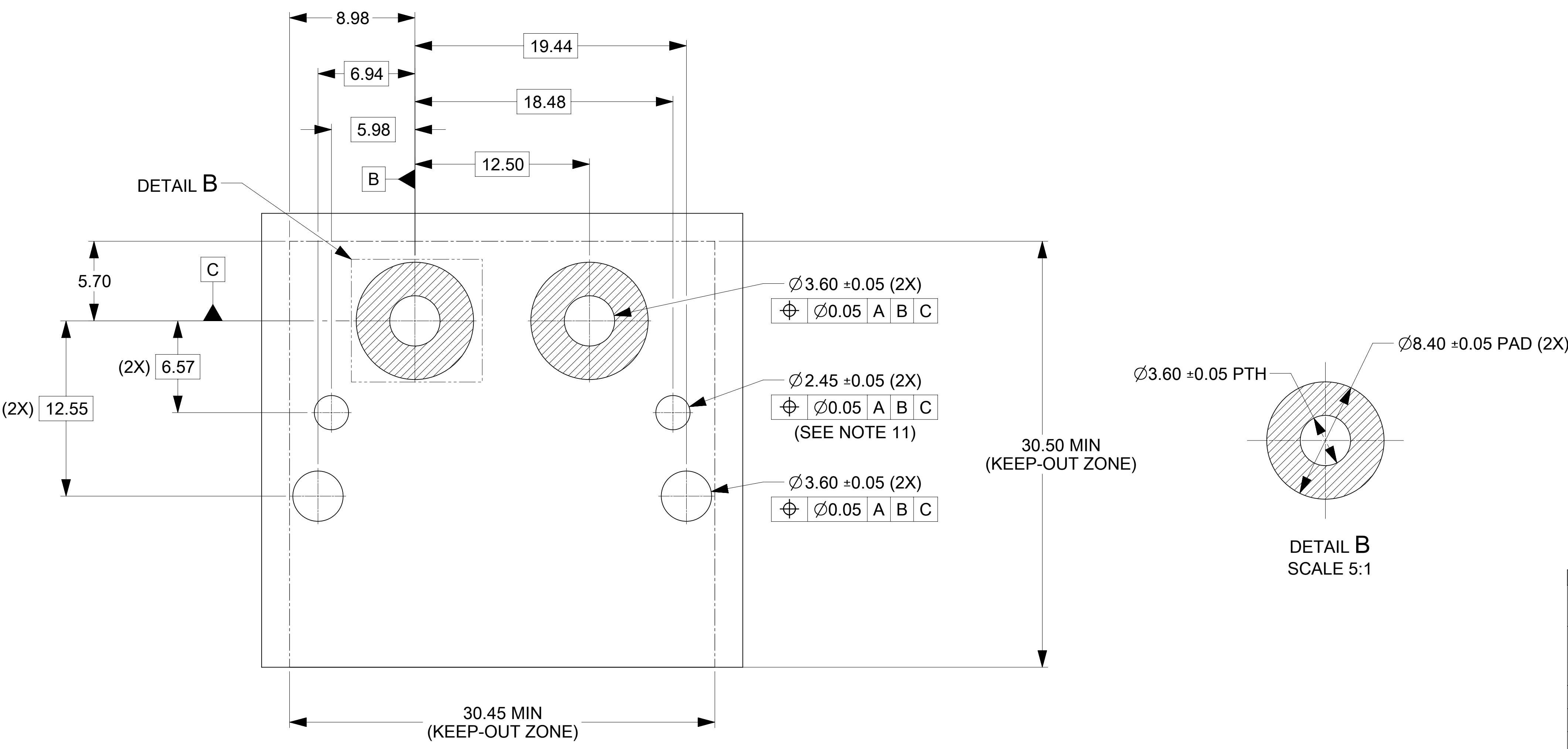


- NOTES:**
- MATERIAL:**
-HOUSINGS: LCP UL94 V-0, COLOR: BLACK
-TERMINALS: COPPER ALLOY
 - PLATING: 3.18 MICRON MIN SILVER OVER 1.27 MICRON MIN NICKEL.
 - HEADER TERMINALS ARE FINISHED WITH ANTI-TURNISH TREATMENT BUT MAY TURNISH OVER TIME.
 - ASSEMBLY MEETS ROHS REQUIREMENT.
 - PRODUCT SPECIFICATION: 2155100003-PS
 - APPLICATION SPECIFICATION: 2155101000-AS
 - TEST SUMMARY: 2155103000-TS
 - PACKAGING SPECIFICATION: 2155103121-PK
 - MATES WITH HARNESS ASSEMBLY 215511-3121.
 - HEADER IS MOUNTED TO PCB WITH SELF TAPPING SCREW FOR HIGHER RETENTION FORCE.
 - FOR USE WITH '2-32' TYPE AB SELF THREADING SCREWS MOLEX SCREW P/N 73726-0015/73726-0005 OF LENGTH 6.35MM / 7.62MM (SCREWS INCLUDED). MAX TORQUE IS 4IN-LBS
 - MALE PIN TO BE MOUNTED TO PCB WITH CONDUCTIVE M2 SCREW AND WASHER FOR OPTIMAL PERFORMANCE.
 - SCREW LENGTH TO BE DECIDED BY THE CUSTOMER BASED ON THE PCB THICKNESS AND THE SPACE AVAILABLE BELOW PCB (REFER 2155101000-AS FOR SCREW RECOMMENDATIONS)
 - SCREWS AND WASHERS ARE NOT SUPPLIED BY MOLEX.

THIS DRAWING CONTAINS INFORMATION THAT IS PROPRIETARY TO MOLEX ELECTRONIC TECHNOLOGIES, LLC AND SHOULD NOT BE USED WITHOUT WRITTEN PERMISSION											
DIMENSION UNITS	SCALE	CURRENT REV DESC: INITIAL RELEASE									
mm	5:1	<p>2CKT 3.4MM RA HEADER, SCREW MOUNT VERSION POWERWIZE PRODUCT FAMILY</p> <p>PRODUCT CUSTOMER DRAWING</p>									
GENERAL TOLERANCES (UNLESS SPECIFIED)											
ANGULAR TOL	± 0.5°										
4 PLACES	±										
3 PLACES	±										
2 PLACES	± 0.15	EC NO: 685180	DRWN: CHETAB	2021/06/07	DOCUMENT NUMBER				DOC TYPE	DOC PART	REVISION
1 PLACE	± 0.25	DRWN: CHETAB	2021/06/07	2155103031				PSD	000	A	
0 PLACES	±	APPR: HTHYAGARAJ	2021/11/15	INITIAL REVISION:							
DRAFT WHERE APPLICABLE MUST REMAIN WITHIN DIMENSIONS		THIRD ANGLE PROJECTION	DRAWING	SERIES	MATERIAL NUMBER	CUSTOMER	SHEET NUMBER				
			D-SIZE	215510	2155103031	GENERAL MARKET	1 OF 2				



EXPLODED VIEW FOR SCREW MOUNT TERMINATION (REFER NOTE 12)



RECOMMENDED PCB LAYOUT AND KEEP-OUT ZONES

THIS DRAWING CONTAINS INFORMATION THAT IS PROPRIETARY TO MOLEX ELECTRONIC TECHNOLOGIES, LLC AND SHOULD NOT BE USED WITHOUT WRITTEN PERMISSION									
DIMENSION UNITS	SCALE	CURRENT REV DESC: INITIAL RELEASE							
mm	4:1								
GENERAL TOLERANCES (UNLESS SPECIFIED)									
ANGULAR TOL	± 0.5°	EC NO: 685180 DRWN: CHETAB 2021/06/07 CHK'D: MBELLE 2021/11/12 APPR: HTHYAGARAJ 2021/11/15							
4 PLACES	±	INITIAL REVISION: DRWN: CHETAB 2021/06/07 APPR: HTHYAGARAJ 2021/11/15							
3 PLACES	±								
2 PLACES	± 0.15	DOCUMENT NUMBER: 2155103031 DOC TYPE: PSD DOC PART: 000 REVISION: A							
1 PLACE	± 0.25	MATERIAL NUMBER: 2155103031 CUSTOMER: GENERAL MARKET SHEET NUMBER: 2 OF 2							
0 PLACES	±	DRAFT WHERE APPLICABLE MUST REMAIN WITHIN DIMENSIONS							
THIRD ANGLE PROJECTION		DRAWING		SERIES		MATERIAL NUMBER		CUSTOMER	
		D-SIZE		215510		2155103031		GENERAL MARKET	

DOCUMENT STATUS	P1	RELEASE DATE	2021/11/15	03:50:25
-----------------	----	--------------	------------	----------