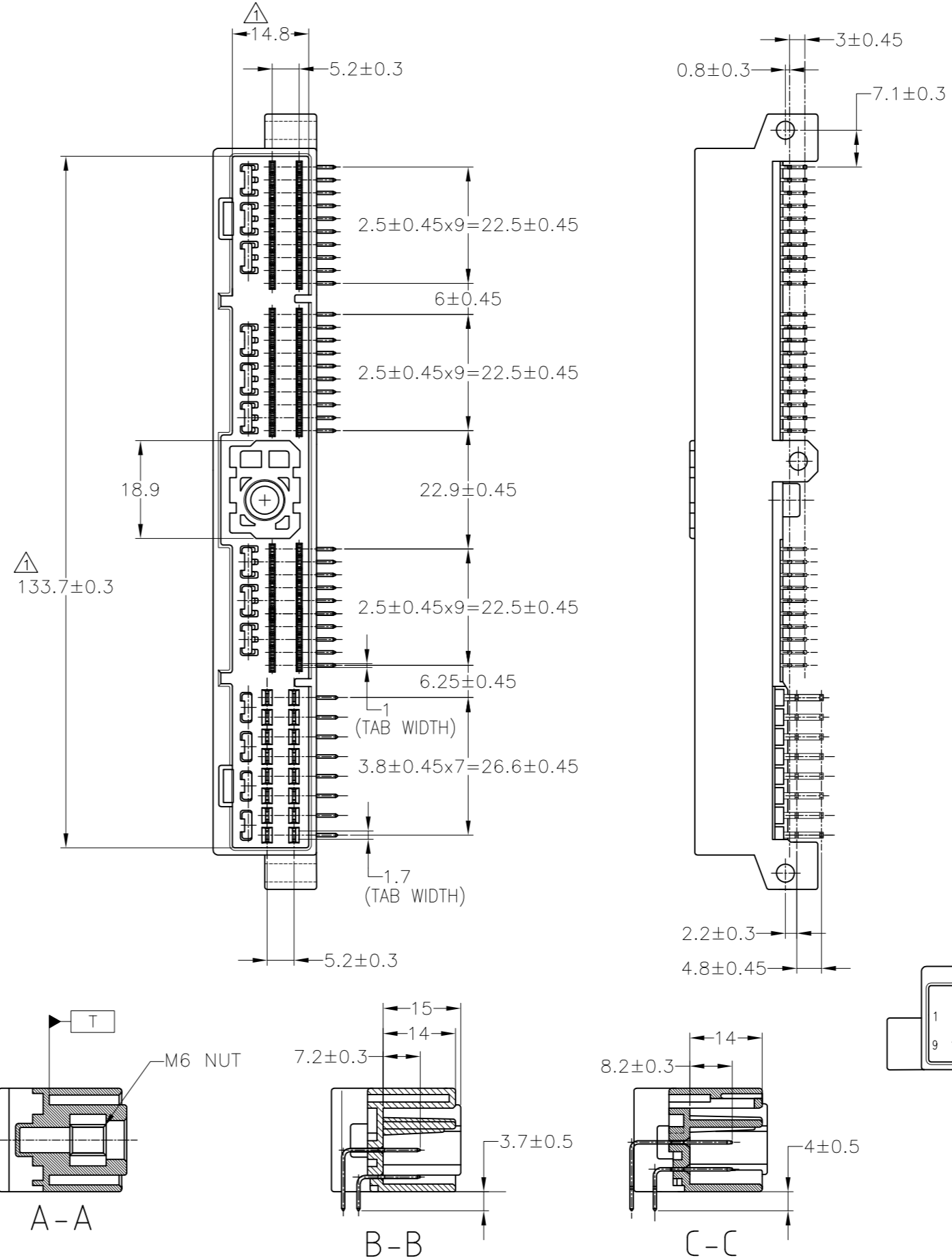
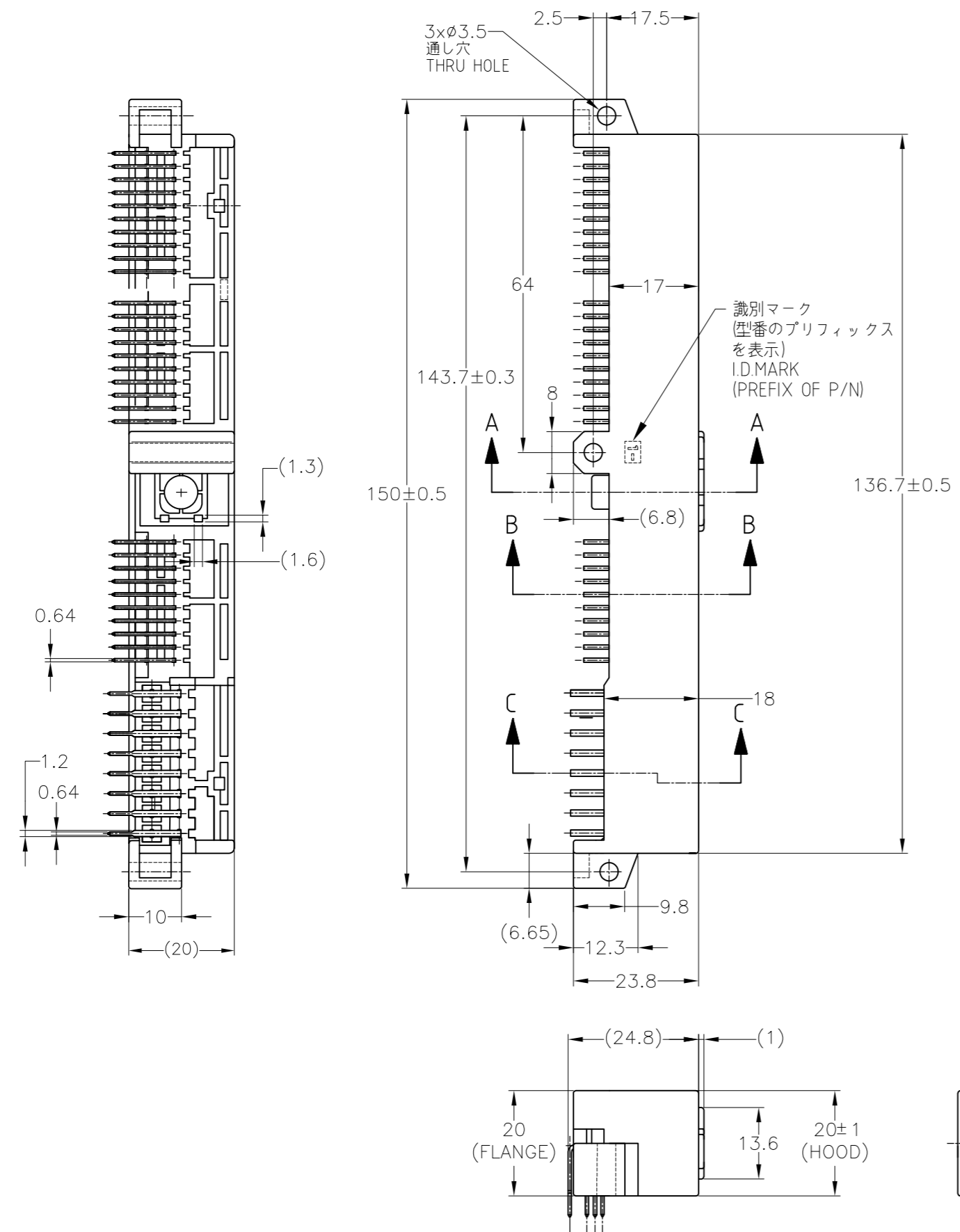
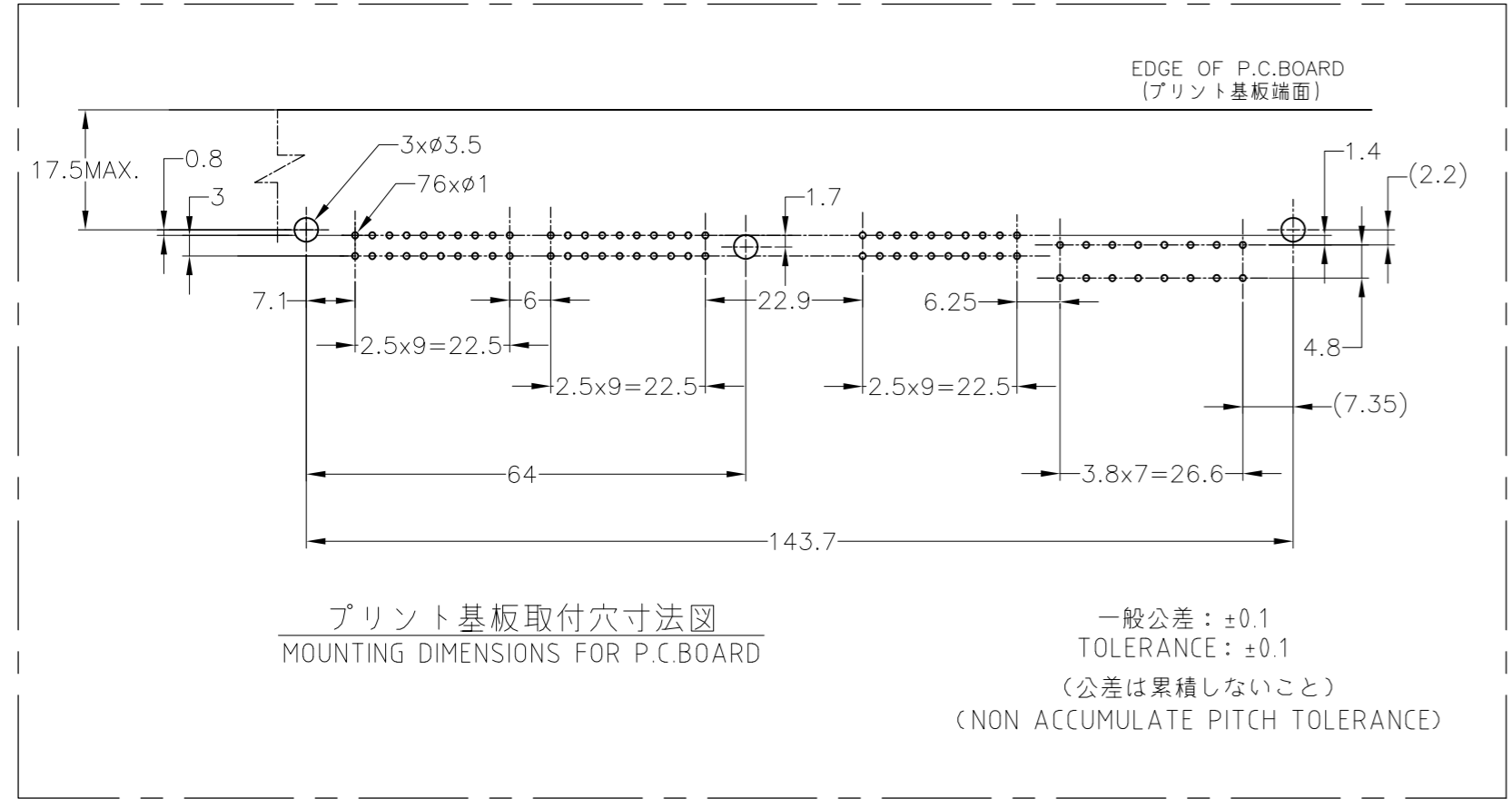
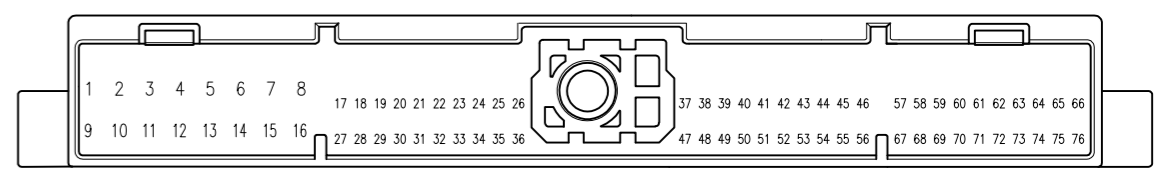


REVISIONS					
P	LTR	DESCRIPTION	DATE	DWN	APVD
M5	REVISED	変更 ECR-16-003435	02JUN2017	KF	TK



- △ T 面より2mmの範囲で測定
- 2. 適用プリント基板厚: 1.6mm
- 3. 推奨取付ネジ: 呼び3mmの小ネジ
又は 呼び4mmのタッピングネジ
- △ 全面ニッケルメッキ上に接触部分は金メッキ
ハンダ付部分は、ハンダメッキ
- △ 金めっき位置(下図参照)
- △ TO BE MEASURED WITHIN 2mm FROM T
- 2. APPLICABLE P.C BOARD THICKNESS: 1.6mm
- 3. RECOMMENDED MOUNTING SCREW: 3mm DIA.
SMALL SCREW & NUT OR 4mm DIA. TAPPING SCREW.
- △ GOLD PLATING FOR CONTACT AREA AND TIN-LEAD
PLATING FOR SOLDERING AREA OVER ALL-OVER
NICKEL PLATING.
- △ GOLD TAB POSITIONS



7-5179932-5	--	SELECTIVE-TIN (MATTE)	SELECTIVE GOLD × 6	PRE-TIN × 16	43,51,53,54,57,71	BLUE 青色	7-5174385-5
--	--	SELECTIVE-TIN (MATTE)	SELECTIVE GOLD × 60	PRE-TIN × 16	17~76	BLUE 青色	5174385-5
--	--	TIN-LEAD	SELECTIVE GOLD × 6	PRE-TIN × 16	43,51,53,54,57,71	BLUE 青色	7-174385-5
通い箱入品 (プラスチック箱) CIRCULATE BOX	プラスチックトレー梱包品 (PACKING FORM BLISTER)	SOLDERING SIDE 半田付け部	CONTACT SIDE 接触部側	SOLDERING SIDE 半田付け部	CONTACT SIDE 接触部側	GOLD PLATED CIRCUIT NO. 金めっき回路番号	COLOR 色
THIS DRAWING IS A CONTROLLED DOCUMENT.				DWN K.FURUYAMA 21MAY2015	TE Connectivity		
DIMENSIONS: 単位: 純 mm				CHK Y.MITO 21MAY2015	NAME 040 SERIES CENTER LOCK CONNECTOR 76POSITION CAP HOUSING ASSEMBLY		
TOLERANCES UNLESS OTHERWISE SPECIFIED 一般公差				APVD R.KOMIYAMA 21MAY2015	DRAWING NO C=174385		
0 PLC ± 1 PLC ± 2 PLC ± 3 PLC ± 4 PLC ± ANGLES ±				PRODUCT SPEC 製品規格	RESTRICTED TO		
FINISH 仕上				APPLICATION SPEC 取付適用規格	SIZE A2	CAGE CODE 00779	SCALE 1:1
MATERIAL HOUSING: PBT CONTACT: BRASS NUT: STEEL				WEIGHT 40.1 g	DRAWING NO C=174385	SHEET 1 OF 1	REV M5
SEE TABLE				CUSTOMER DRAWING			