

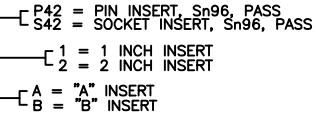
THIS DRAWING AND THE INFORMATION SET FORTH HERE-ON ARE THE PROPERTY OF TYCO ELECTRONICS AND ARE TO BE HELD IN TRUST AND CONFIDENCE. PUBLICATION, DUPLICATION, DISCLOSURE, OR USE FOR ANY PURPOSE NOT EXPRESSLY AUTHORIZED IN WRITING BY TYCO ELECTRONICS IS PROHIBITED.

| REVISIONS | | | |
|-----------|---|------------|----------|
| LTR | DESCRIPTION | DATE | APPROVED |
| B | REVISED PER ECN T-20519 | 96/1/30 | M.HIGGY |
| B1 | ADMINISTRATIVE CHANGE PER ECO-11-024448 | Dec/6/2011 | M.HIGGY |

NOTES:

1. PART NUMBER VARIABLE:

MTC50-EXX-XXX



2. THE APPLICABLE RAYCHEM SPECIFICATION FOR THIS PART IS C6111. THIS PART IS QUALIFIED TO C6111.

3. MATERIAL:

- A. SEALING BOOT: TRANSPARENT BLUE HEAT SHRINKABLE, RADIATION CROSS-LINKED PVDF.
- B. CABLE & INSERT SEALS: MODIFIED THERMOPLASTIC HOT MELT SEALANT.
- C. INSERT BODY: HIGH GRADE POLYARYLENE THERMOPLASTIC OR EQUIVALENT.
- D. PIN/SOCKET CONTACTS: COPPER ALLOY C17200 PER ASTM B194.
- E. PRE-ASSEMBLED SolderSleeves®: SEE RAYCHEM SPECIFICATION CONTROL DRAWING D-141-0169.

4. FINISH:

- A. PIN/SOCKET INSERT: AS MOLDED
- B. PIN/SOCKET CONTACTS: (ENGAGING END): GOLD PLATED PER MIL-G-45204, TYPE 1, GRADE C, CLASS 1 OVER SUITABLE UNDERPLATE. (TERMINATION END): SOLDER COATED PER QQ-S-571, Sn96, FLUX COATED PER QQ-S-571, TYPE RMA.

△ POSITION IS MARKED IN CONTRASTING COLOR.

6. DIELECTRIC WITHSTANDING VOLTAGE:

| TEST CONDITION (MATED) | TEST VOLTAGE VAC RMS AT 60 Hz. |
|---|--------------------------------|
| SEA LEVEL | 750 |
| ALTITUDE 70,000 FT. (33.5 TORR) AMBIENT TEMP. | 500 |
| ALTITUDE 80,000 FT. (20.6 TORR) -50°C TEMP. | 375 |

7. CURRENT RATING: 2.0 AMPS PER CONTACT.

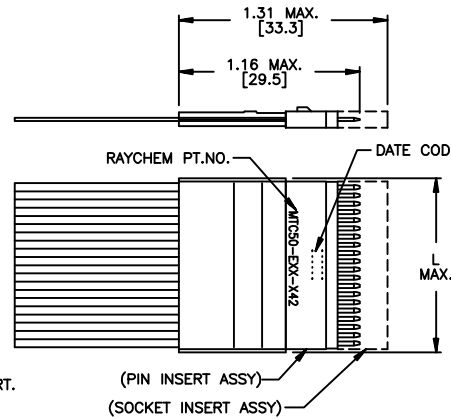
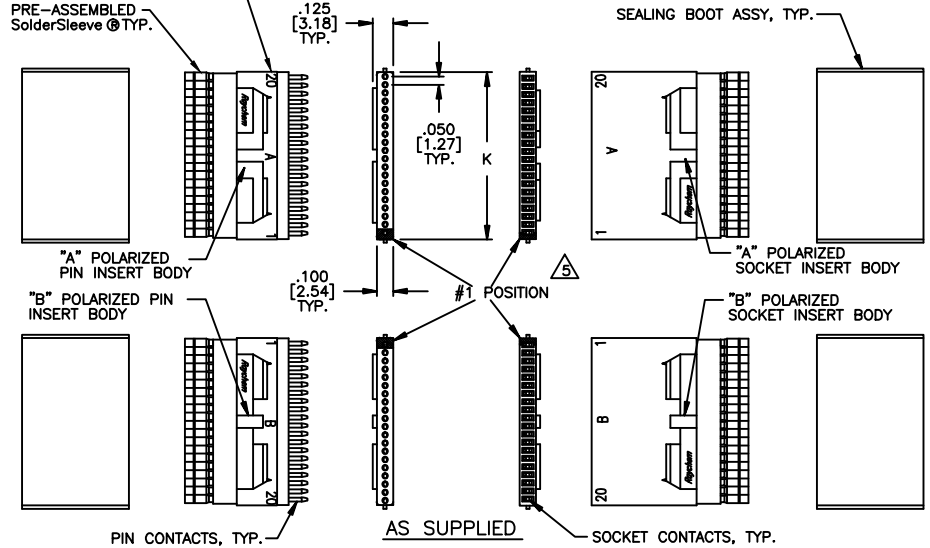
8. USABLE WIRE SIZE:

FLAT CONDUCTOR CABLE: 28 AWG

△ CONSULT FACTORY FOR RAYCHEM ENGINEERING STANDARD FOR TERMINATION METHOD.

10. THE CORRECT MATING PART FOR A RAYCHEM MTC50 PIN INSERT IS A RAYCHEM MTC50 SOCKET INSERT. THE SPECIFIED PERFORMANCE OF THIS CONNECTOR IS BASED ON TEST PERFORMANCE WHEN ASSEMBLED WITH THE CORRECT MATING PART.

#20 IS SHOWN FOR 1" INSERT.
#40 IS SHOWN FOR 2" INSERT, TYP.



△ AFTER BOOT ASSY & TERMINATION

| DESCRIPTION | 1" INSERT | 2" INSERT |
|------------------|-----------------------|-----------------------|
| K | 1.035 [26.29] | 2.035 [51.69] |
| L | 1.140 [28.96] | 2.140 [54.36] |
| WEIGHT (MAXIMUM) | .0074 LBS. [3.357 gm] | .0147 LBS. [6.668 gm] |

© 2011 Tyco Electronics. All rights reserved

Raychem MTC CUSTOMER DRAWING

| | | | | | |
|--|-------------------|------------|-------------------|-------|--|
| UNLESS OTHERWISE SPECIFIED DIMENSIONS ARE IN INCHES. METRIC DIMENSIONS ARE IN BRACKETS. DECIMALS .XXX ± .005 [.13 mm] .XX ± .03 [.8 mm] ANGLES .X ± WEIGHT lbs [g] | DRAWN | MGHOBSON | 90NOV29 | | |
| | CHECKED | | | | |
| | APPROVED | AKN | 90DEC11 | | |
| | APPROVED | EZ | 90DEC11 | | |
| CAD NAME | MTC50-EXX-P42/S42 | | | TITLE | INSERT, PASS TERMINATION, Sn96, 125 CELSIUS DEGREE OPERATING TEMPERATURE, FLAT CABLE CONDUCTOR, 28 AWG, MTC50 SERIES |
| THIRD ANGLE PROJECTION | SIZE | CAGE CODE: | DWG. NO. | REV | |
| | C | 06090 | MTC50-EXX-P42/S42 | B1 | |
| | SCALE: NONE | | | | SHEET 1 OF 1 |

If this document is printed it becomes uncontrolled. Check for the latest revision