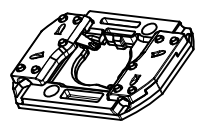
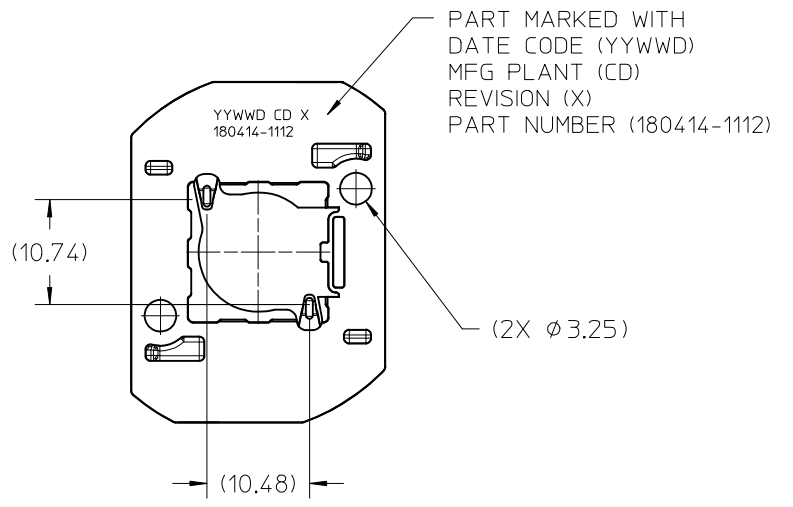
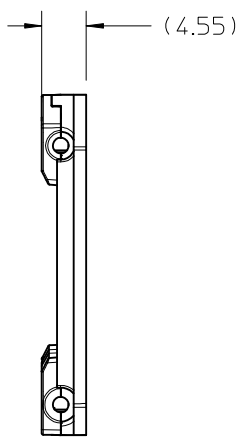
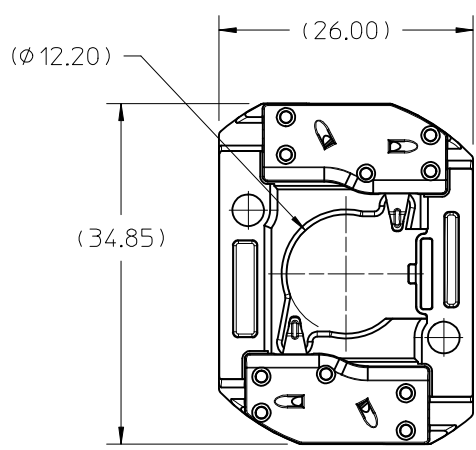


10	9	8	7	6	5	4	3	2	1
PART NUMBER	DESCRIPTION		POCKET DEPTH	HOUSING	TERMINAL	CAP			
180414-1112	COB LED HOLDER ASSEMBLY		0.90	180413-1112	180155-0133	180154-0105			
180414-2112	COB LED HOLDER ASSEMBLY		0.75	180413-2112	180155-0133	180154-0105			



ISO VIEW 1  
SCALE 1:1

P/N 180414-1112 HOLDER ASSEMBLY  
(0.90 POCKET DEPTH)



PART MARKED WITH  
DATE CODE (YYWWD)  
MFG PLANT (CD)  
REVISION (X)  
PART NUMBER (180414-1112)

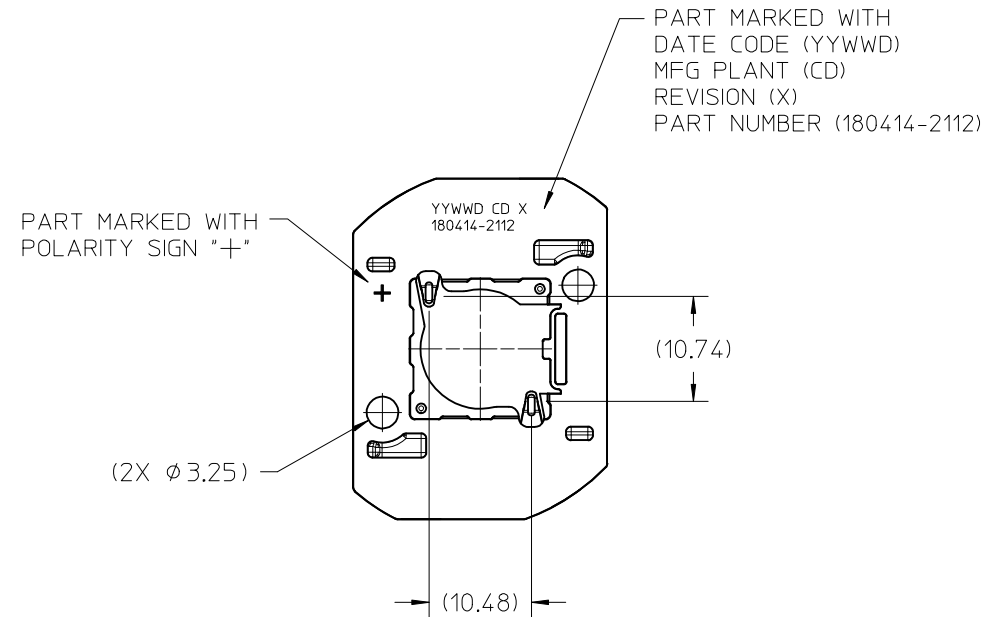
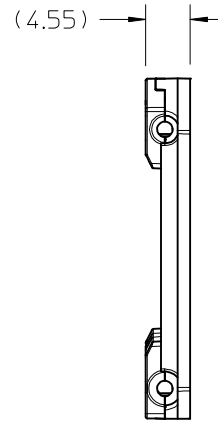
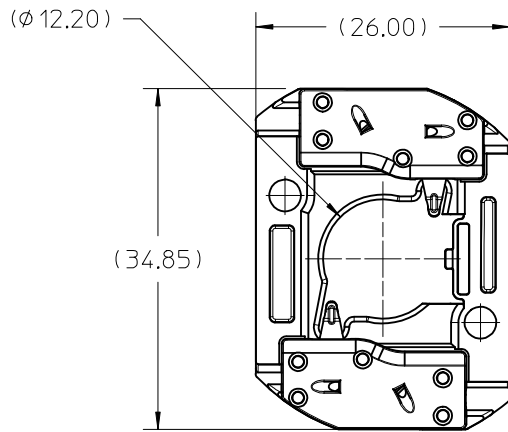
- NOTES:
1. MATERIALS: HOUSING AND CAPS: POLYESTER PBT GLASS FILLED; COLOR: WHITE; TERMINAL: COPPER ALLOY
  2. FINISHES: TERMINAL CONTACT: SELECT GOLD OVER NICKEL WIRE TRAP: SELECT TIN OVER NICKEL
  3. PRODUCT SPECIFICATION: 180414-0000-PS
  4. PACKAGING SPECIFICATION: PK-180419-005
  5. UL:OLFB2 UL496 FILE NO. E345583
  6. ELV AND ROHS COMPLIANT
  7. FOR USE WITH: 13.5 MM X 13.5 MM COB LED
  8. WIRE GAUGE: 18, 20, AND 22 AWG, SOLID OR STRANDED WITH TIN OVERCOAT. STRIP LENGTH 10MM +2.0/-0.0MM.
  9. ALL DIMENSIONS IN PARENTHESES (XX.XX) ARE FOR REFERENCE ONLY

<b>ENTER DESCRIPTION</b> EC NO: SSL2017-0024 DRWNLZABJANOVSKI 2017/02/21 CHKD: APPR:BPISZCZOR 2017/03/07 <b>C4</b>	<b>REVISION</b> DESCRIPTION REV	<b>QUALITY SYMBOLS</b> $\nabla F=0$ $\nabla F=0$ $\nabla F=0$	<b>GENERAL TOLERANCES (UNLESS SPECIFIED)</b>		<b>DIMENSION STYLE</b> <b>MM ONLY</b>		<b>SCALE</b> 2:1	<b>DESIGN UNITS</b> METRIC	<b>THIRD ANGLE PROJECTION</b>
		4 PLACES ± --- ± --- 3 PLACES ± --- ± --- 2 PLACES ± 0.13 ± --- 1 PLACE ± 0.25 ± --- 0 PLACE ± --- ± ---	mm      INCH	DRAWN BY      DATE MCOLE      2013/12/09	<b>TITLE</b> COB LED HOLDER ASSEMBLY 13.5 MM X 13.5 MM SQUARE				
		ANGULAR ± 1/2°		CHECKED BY      DATE MCOLE      2013/12/09					
		DRAFT WHERE APPLICABLE MUST REMAIN WITHIN DIMENSIONS		APPROVED BY      DATE DMCGOWAN      2013/12/09				<b>DOCUMENT NO.</b> SD-180414-112	<b>SHEET NO.</b> 1 OF 5

SEE CHART  
 THIS DRAWING CONTAINS INFORMATION THAT IS PROPRIETARY TO MOLEX INCORPORATED AND SHOULD NOT BE USED WITHOUT WRITTEN PERMISSION

10 9 8 7 6 5 4 3 2 1

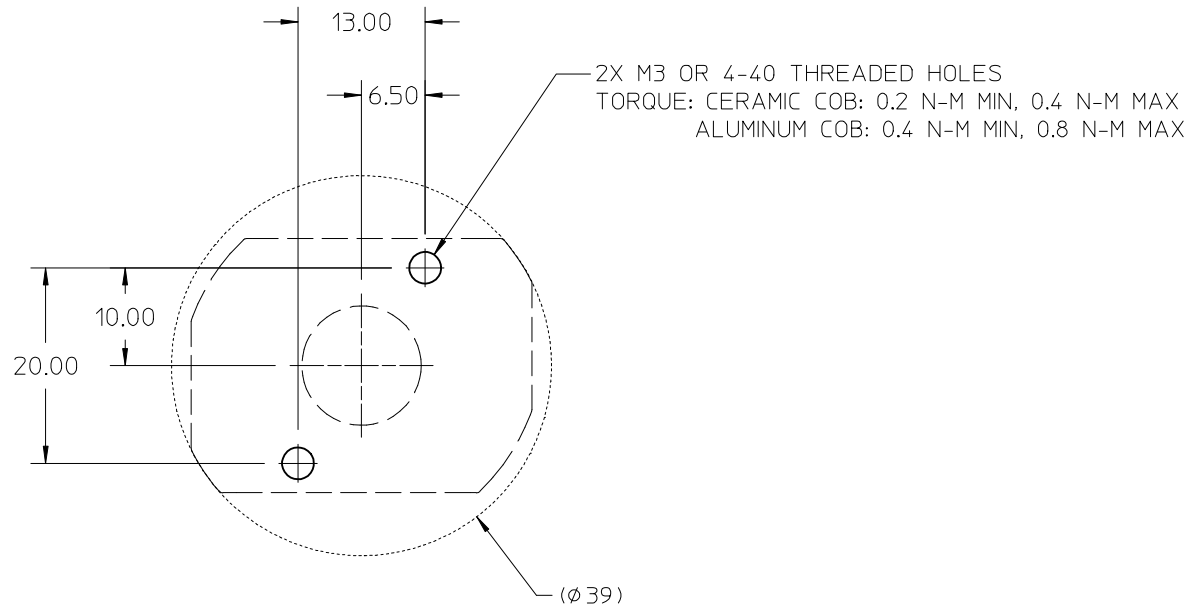
# P/N 180414-2112 HOLDER ASSEMBLY (0.75 POCKET DEPTH)



<b>ENTER DESCRIPTION</b> EC NO: SSL2017-0024 DRWNLZABJANOVSKI 2017/02/21 CHKD: APPR:BPISZCZOR 2017/03/07 REV <b>C4</b>	QUALITY SYMBOLS $\nabla F=0$ $\nabla F=0$ $\nabla F=0$	GENERAL TOLERANCES (UNLESS SPECIFIED) <table border="1"> <thead> <tr> <th></th> <th>mm</th> <th>INCH</th> </tr> </thead> <tbody> <tr> <td>4 PLACES</td> <td>± ---</td> <td>± ---</td> </tr> <tr> <td>3 PLACES</td> <td>± ---</td> <td>± ---</td> </tr> <tr> <td>2 PLACES</td> <td>± 0.13</td> <td>± ---</td> </tr> <tr> <td>1 PLACE</td> <td>± 0.25</td> <td>± ---</td> </tr> <tr> <td>0 PLACE</td> <td>± ---</td> <td>± ---</td> </tr> </tbody> </table>		mm	INCH	4 PLACES	± ---	± ---	3 PLACES	± ---	± ---	2 PLACES	± 0.13	± ---	1 PLACE	± 0.25	± ---	0 PLACE	± ---	± ---	DIMENSION STYLE <b>MM ONLY</b> DRAWN BY DATE MCOLE 2013/12/09 CHECKED BY DATE MCOLE 2013/12/09 APPROVED BY DATE DMCGOWAN 2013/12/09	SCALE <b>2:1</b> DESIGN UNITS <b>METRIC</b> THIRD ANGLE PROJECTION
		mm	INCH																			
	4 PLACES	± ---	± ---																			
	3 PLACES	± ---	± ---																			
2 PLACES	± 0.13	± ---																				
1 PLACE	± 0.25	± ---																				
0 PLACE	± ---	± ---																				
	DRAFT WHERE APPLICABLE MUST REMAIN WITHIN DIMENSIONS	MATERIAL NO. <b>SEE CHART</b>	TITLE <b>COB LED HOLDER ASSEMBLY 13.5 MM X 13.5 MM SQUARE</b>	DOCUMENT NO. <b>SD-180414-112</b>																		
		ANGULAR ± 1/2°	SIZE <b>B</b>	SHEET NO. <b>2 OF 5</b>																		
			THIS DRAWING CONTAINS INFORMATION THAT IS PROPRIETARY TO MOLEX INCORPORATED AND SHOULD NOT BE USED WITHOUT WRITTEN PERMISSION																			

9 8 7 6 5 4 3 2 1

10 9 8 7 6 5 4 3 2 1



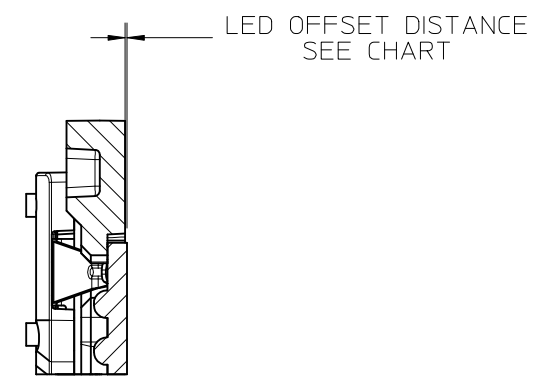
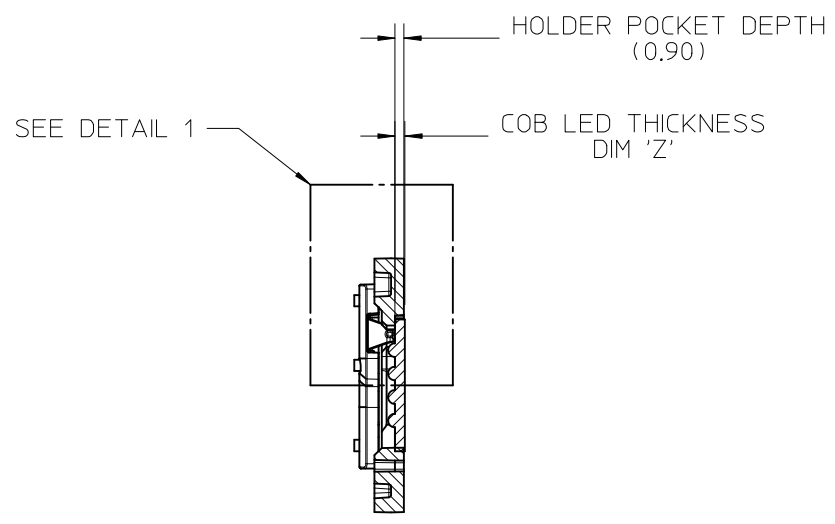
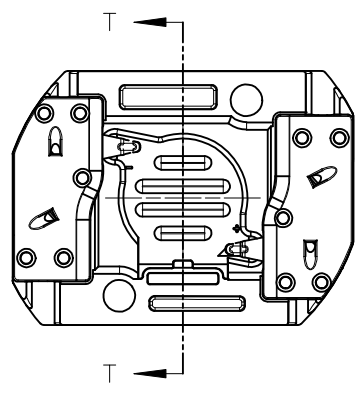
RECOMMENDED MOUNTING DIMENSIONS

<b>ENTER DESCRIPTION</b> EC NO: SSL2017-0024 DRWNL:ZABJANOVSKI 2017/02/21 CHKD: APPR:BPISZCZOR 2017/03/07 REV C4	QUALITY SYMBOLS $\nabla F=0$ $\nabla F=0$ $\nabla F=0$	GENERAL TOLERANCES (UNLESS SPECIFIED) mm INCH 4 PLACES $\pm$ --- $\pm$ --- 3 PLACES $\pm$ --- $\pm$ --- 2 PLACES $\pm 0.13$ $\pm$ --- 1 PLACE $\pm 0.25$ $\pm$ --- 0 PLACE $\pm$ --- $\pm$ --- ANGULAR $\pm 1/2^\circ$	DIMENSION STYLE <b>MM ONLY</b> DRAWN BY DATE MCOLE 2013/12/09 CHECKED BY DATE MCOLE 2013/12/09 APPROVED BY DATE DMCGOWAN 2013/12/09	SCALE <b>2:1</b> DESIGN UNITS <b>METRIC</b> THIRD ANGLE PROJECTION	TITLE <b>COB LED HOLDER ASSEMBLY                  13.5 MM X 13.5 MM SQUARE</b> <b>molex</b>	MATERIAL NO. <b>SEE CHART</b> DOCUMENT NO. <b>SD-180414-112</b> SHEET NO. <b>3 OF 5</b>
	DRAFT WHERE APPLICABLE MUST REMAIN WITHIN DIMENSIONS		THIS DRAWING CONTAINS INFORMATION THAT IS PROPRIETARY TO MOLEX INCORPORATED AND SHOULD NOT BE USED WITHOUT WRITTEN PERMISSION			

9 8 7 6 5 4 3 2 1

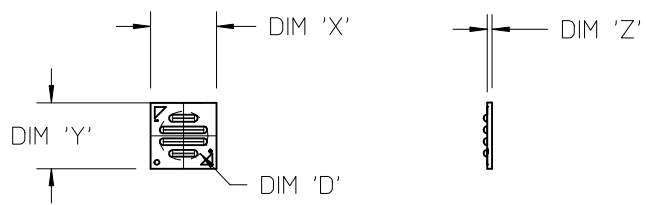
10	9	8	7	6	5	4	3	2	1
COB MFG	TYPE	DIM 'X'	DIM 'Y'	DIM 'Z'	DIM 'D'	OFFSET			
VOSSLOH-SCHWABE	DMC122C	13.5	13.5	1.0	10.0	0.10			

ILLUSTRATION OF P/N 180414-1112 HOLDER MATED WITH LED



SECTION T-T

DETAIL 1  
SCALE 4:1

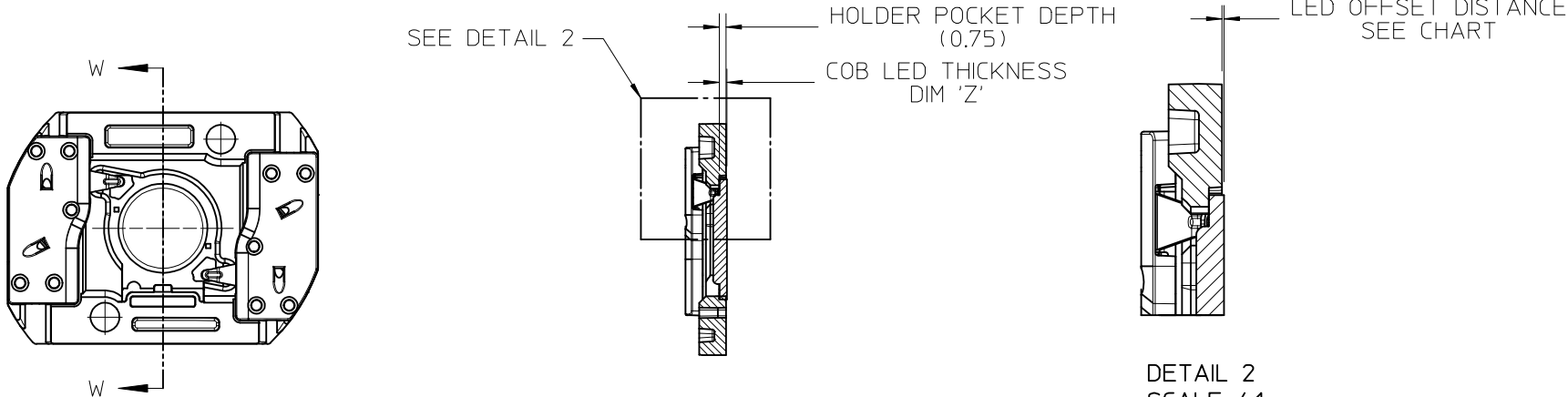


COB LED  
SCALE 1:1

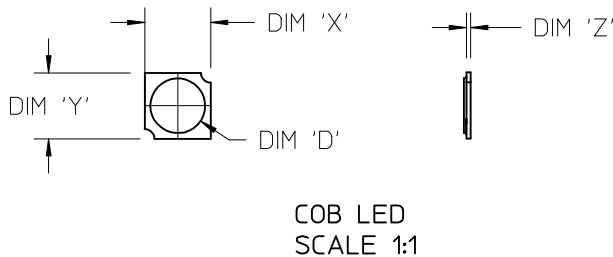
<b>ENTER DESCRIPTION</b> EC NO: SSL2017-0024 DRWNL:ZAB.JANOVSKI 2017/02/21 CHKD: APPR:BPISZCZOR 2017/03/07 <b>C4</b>	<b>QUALITY SYMBOLS</b>   	<b>GENERAL TOLERANCES (UNLESS SPECIFIED)</b>		<b>DIMENSION STYLE</b> <b>MM ONLY</b>		<b>SCALE</b> 2:1	<b>DESIGN UNITS</b> METRIC	<b>THIRD ANGLE PROJECTION</b>		
		4 PLACES	± ---	± ---	DRAWN BY	DATE	<b>TITLE</b> COB LED HOLDER ASSEMBLY 13.5 MM X 13.5 MM SQUARE			
		3 PLACES	± ---	± ---	MCOLE	2013/12/09				
		2 PLACES	± 0.13	± ---	CHECKED BY	DATE				
		1 PLACE	± 0.25	± ---	MCOLE	2013/12/09				
0 PLACE	± ---	± ---	APPROVED BY	DATE	<b>DOCUMENT NO.</b> SD-180414-112		<b>SHEET NO.</b> 4 OF 5			
<b>ANGULAR ±1/2°</b>		<b>MATERIAL NO.</b> SEE CHART		<b>THIS DRAWING CONTAINS INFORMATION THAT IS PROPRIETARY TO MOLEX INCORPORATED AND SHOULD NOT BE USED WITHOUT WRITTEN PERMISSION</b>						
<b>DRAFT WHERE APPLICABLE MUST REMAIN WITHIN DIMENSIONS</b>		<b>SIZE</b> B								

10	9	8	7	6	5	4	3	2	1
COB MFG	TYPE			DIM 'X'	DIM 'Y'	DIM 'Z'	DIM 'D'	OFFSET	
CITIZEN	CLL020, CLL022, CLU024, CLU026, CLU028			13.5	13.5	0.90	11.2	0.15	
SEOUL	ZC6			13.5	13.5	0.90	10.0	0.15	
TRIDONIC	SLE G5 LES10			13.5	13.5	0.90	9.4	0.15	
CITIZEN	CLU025, CLU027			13.5	13.5	0.90	7.4	0.15	
CITIZEN	CLU700, CLU701			13.5	13.5	0.90	7.8	0.15	
EVERLIGHT	EAHP1313WA*, EAHP1313WB*, EAHP1313WC*			13.5	13.5	0.90	10.8	0.15	
EVERLIGHT	EA1313 36V/3W			13.5	13.5	0.90	10.8	0.15	
EVERLIGHT	EA1313 36V/6W			13.5	13.5	0.90	10.8	0.15	
EVERLIGHT	EA1313 36V/10W			13.5	13.5	0.90	10.8	0.15	
EVERLIGHT	EA1313 36V/13W			13.5	13.5	0.90	10.8	0.15	
VOSSLOH-SCHWABE	DMC122C			13.5	13.5	1.00	10.0	0.25	

ILLUSTRATION OF P/N 180414-2112 HOLDER MATED WITH LED

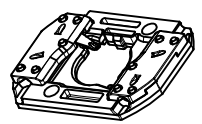


SECTION W-W



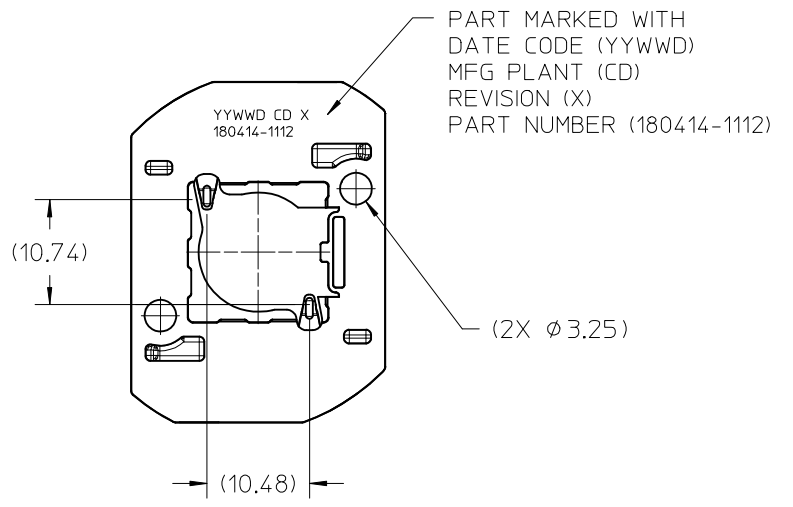
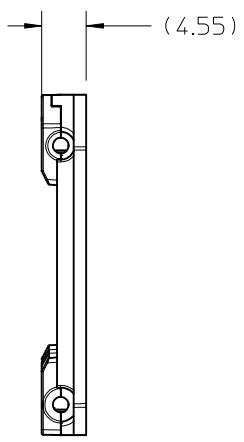
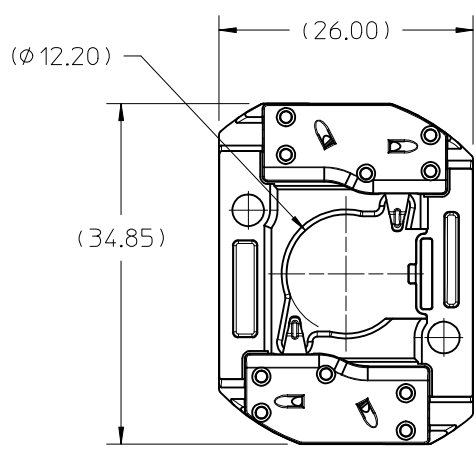
<b>ENTER DESCRIPTION</b> EC NO: SSL2017-0024 DRWNLZABJANOVSKI 2017/02/21 CHKD: APPR:BP1SZCZOR 2017/03/07 REV C4	<b>QUALITY SYMBOLS</b> $\nabla F/0$ $\nabla F/0$ $\nabla F/0$	<b>GENERAL TOLERANCES (UNLESS SPECIFIED)</b>		<b>DIMENSION STYLE</b> <b>MM ONLY</b>		<b>SCALE</b> 2:1	<b>DESIGN UNITS</b> METRIC	<b>THIRD ANGLE PROJECTION</b>		
		4 PLACES	± ---	± ---	DRAWN BY	DATE	<b>TITLE</b> COB LED HOLDER ASSEMBLY 13.5 MM X 13.5 MM SQUARE			
		3 PLACES	± ---	± ---	MCOLE	2013/12/09				
		2 PLACES	± 0.13	± ---	CHECKED BY	DATE				
1 PLACE	± 0.25	± ---	MCOLE	2013/12/09						
0 PLACE	± ---	± ---	APPROVED BY	DATE	<b>DOCUMENT NO.</b> SD-180414-112		<b>SHEET NO.</b> 5 OF 5			
ANGULAR ±1/2°			MATERIAL NO.		THIS DRAWING CONTAINS INFORMATION THAT IS PROPRIETARY TO MOLEX INCORPORATED AND SHOULD NOT BE USED WITHOUT WRITTEN PERMISSION					
DRAFT WHERE APPLICABLE MUST REMAIN WITHIN DIMENSIONS			SEE CHART							

10	9	8	7	6	5	4	3	2	1
PART NUMBER	DESCRIPTION		POCKET DEPTH	HOUSING	TERMINAL	CAP			
180414-1112	COB LED HOLDER ASSEMBLY		0.90	180413-1112	180155-0133	180154-0105			
180414-2112	COB LED HOLDER ASSEMBLY		0.75	180413-2112	180155-0133	180154-0105			



ISO VIEW 1  
SCALE 1:1

P/N 180414-1112 HOLDER ASSEMBLY  
(0.90 POCKET DEPTH)



PART MARKED WITH  
DATE CODE (YYWWD)  
MFG PLANT (CD)  
REVISION (X)  
PART NUMBER (180414-1112)

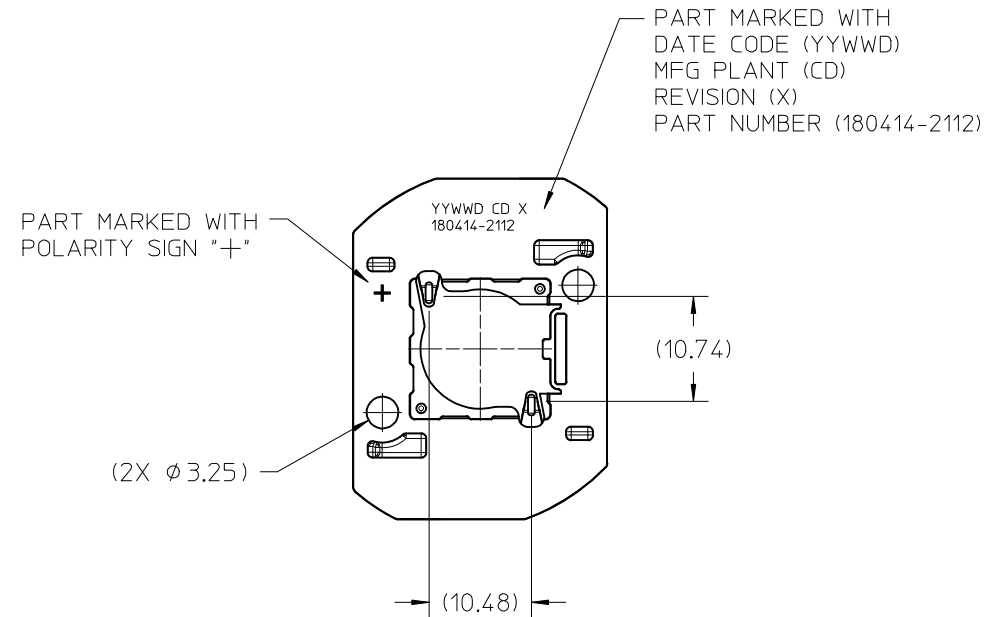
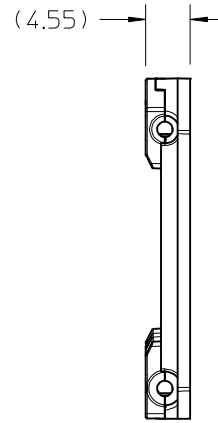
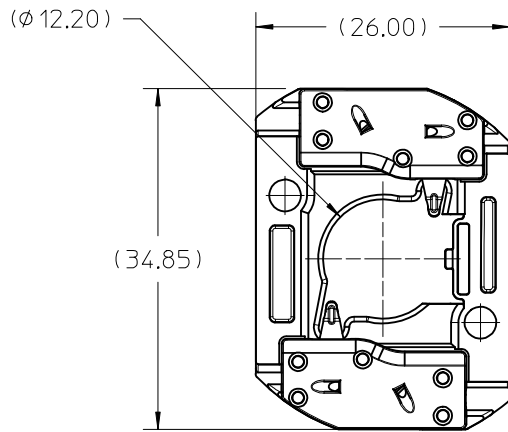
- NOTES:
1. MATERIALS: HOUSING AND CAPS: POLYESTER PBT GLASS FILLED; COLOR: WHITE; TERMINAL: COPPER ALLOY
  2. FINISHES: TERMINAL CONTACT: SELECT GOLD OVER NICKEL WIRE TRAP: SELECT TIN OVER NICKEL
  3. PRODUCT SPECIFICATION: 180414-0000-PS
  4. PACKAGING SPECIFICATION: PK-180419-005
  5. UL:OLFB2 UL496 FILE NO. E345583
  6. ELV AND ROHS COMPLIANT
  7. FOR USE WITH: 13.5 MM X 13.5 MM COB LED
  8. WIRE GAUGE: 18, 20, AND 22 AWG, SOLID OR STRANDED WITH TIN OVERCOAT. STRIP LENGTH 10MM +2.0/-0.0MM.
  9. ALL DIMENSIONS IN PARENTHESES (XX.XX) ARE FOR REFERENCE ONLY

<b>ENTER DESCRIPTION</b> EC NO: SSL2017-0024 DRAWN: ZABJANOVSKI 2017/02/21 CHKD: APPR: BPI/SZOR 2017/03/07 <b>C4</b>	<b>REVISION</b> DESCRIPTION REV	<b>QUALITY SYMBOLS</b> $\nabla F=0$ $\nabla F=0$ $\nabla F=0$	<b>GENERAL TOLERANCES (UNLESS SPECIFIED)</b>		<b>DIMENSION STYLE</b> <b>MM ONLY</b>		<b>SCALE</b> 2:1	<b>DESIGN UNITS</b> METRIC	<b>THIRD ANGLE PROJECTION</b>
		4 PLACES ± --- ± --- 3 PLACES ± --- ± --- 2 PLACES ± 0.13 ± --- 1 PLACE ± 0.25 ± --- 0 PLACE ± --- ± ---	mm      INCH	DRAWN BY: MCOLE DATE: 2013/12/09	CHECKED BY: MCOLE DATE: 2013/12/09	<b>TITLE</b> COB LED HOLDER ASSEMBLY 13.5 MM X 13.5 MM SQUARE			
		ANGULAR ± 1/2°		APPROVED BY: DMCGOWAN DATE: 2013/12/09	<b>molex</b>				
		DRAFT WHERE APPLICABLE MUST REMAIN WITHIN DIMENSIONS		MATERIAL NO. <b>SEE CHART</b>	DOCUMENT NO. SD-180414-112	SHEET NO. 1 OF 5			

THIS DRAWING CONTAINS INFORMATION THAT IS PROPRIETARY TO MOLEX INCORPORATED AND SHOULD NOT BE USED WITHOUT WRITTEN PERMISSION

10 9 8 7 6 5 4 3 2 1

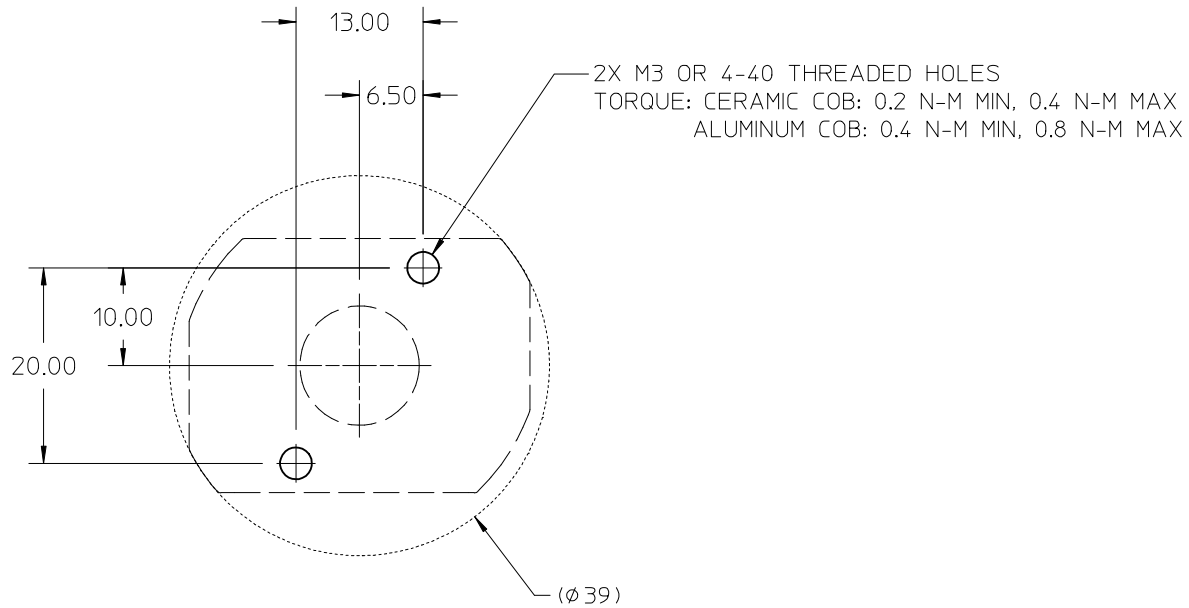
# P/N 180414-2112 HOLDER ASSEMBLY (0.75 POCKET DEPTH)



<b>ENTER DESCRIPTION</b> EC NO: SSL2017-0024 DRWNL:ZABJANOVSKI 2017/02/21 CHKD: APPR:BPISZCZOR 2017/03/07 REV <b>C4</b>	QUALITY SYMBOLS $\nabla = 0$ $\nabla = 0$ $\nabla = 0$	GENERAL TOLERANCES (UNLESS SPECIFIED) <table border="1"> <thead> <tr> <th></th> <th>mm</th> <th>INCH</th> </tr> </thead> <tbody> <tr> <td>4 PLACES</td> <td>± ---</td> <td>± ---</td> </tr> <tr> <td>3 PLACES</td> <td>± ---</td> <td>± ---</td> </tr> <tr> <td>2 PLACES</td> <td>± 0.13</td> <td>± ---</td> </tr> <tr> <td>1 PLACE</td> <td>± 0.25</td> <td>± ---</td> </tr> <tr> <td>0 PLACE</td> <td>± ---</td> <td>± ---</td> </tr> </tbody> </table>		mm	INCH	4 PLACES	± ---	± ---	3 PLACES	± ---	± ---	2 PLACES	± 0.13	± ---	1 PLACE	± 0.25	± ---	0 PLACE	± ---	± ---	DIMENSION STYLE <b>MM ONLY</b>	SCALE <b>2:1</b>	DESIGN UNITS <b>METRIC</b>	THIRD ANGLE PROJECTION
		mm	INCH																					
	4 PLACES	± ---	± ---																					
	3 PLACES	± ---	± ---																					
	2 PLACES	± 0.13	± ---																					
1 PLACE	± 0.25	± ---																						
0 PLACE	± ---	± ---																						
		DRAFT WHERE APPLICABLE MUST REMAIN WITHIN DIMENSIONS	DRAWN BY MCOLE	DATE 2013/12/09	TITLE <b>COB LED HOLDER ASSEMBLY 13.5 MM X 13.5 MM SQUARE</b>																			
			CHECKED BY MCOLE	DATE 2013/12/09	<b>molex</b>																			
			APPROVED BY DMCGOWAN	DATE 2013/12/09	DOCUMENT NO. <b>SD-180414-112</b>																			
			MATERIAL NO. <b>SEE CHART</b>	SIZE <b>B</b>	SHEET NO. <b>2 OF 5</b>																			

9 8 7 6 5 4 3 2 1

10 9 8 7 6 5 4 3 2 1



RECOMMENDED MOUNTING DIMENSIONS

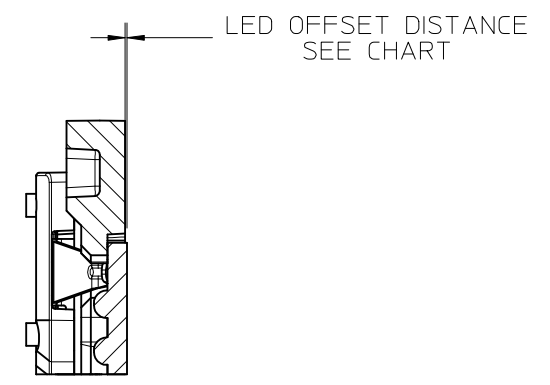
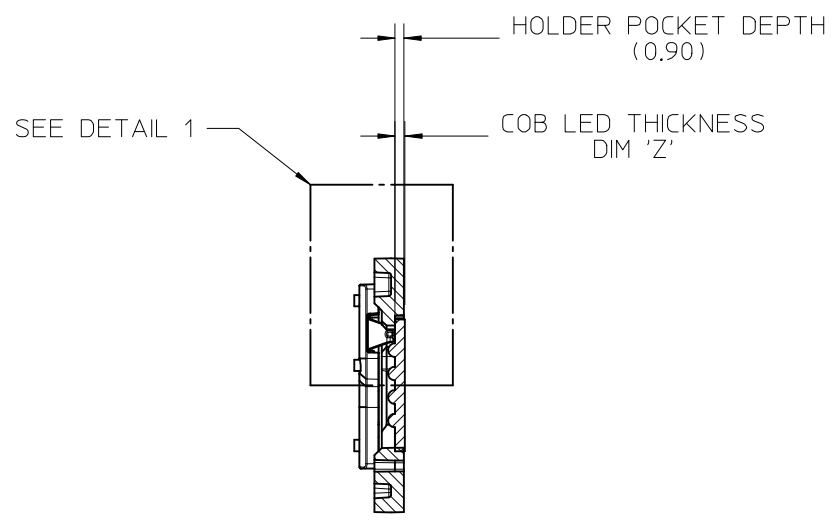
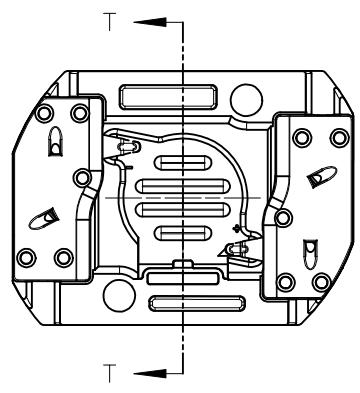
<b>ENTER DESCRIPTION</b> EC NO: SSL2017-0024 DRWNL: ZABJANOVSKI 2017/02/21 CHKD: APPR: BPISZCZOR 2017/03/07	QUALITY SYMBOLS $\nabla F=0$ $\nabla F=0$ $\nabla F=0$	GENERAL TOLERANCES (UNLESS SPECIFIED)		DIMENSION STYLE <b>MM ONLY</b>		SCALE <b>2:1</b>	DESIGN UNITS <b>METRIC</b>	THIRD ANGLE PROJECTION			
		4 PLACES $\pm$ --- $\pm$ ---	mm INCH	DRAWN BY MCOLE	DATE 2013/12/09	TITLE <b>COB LED HOLDER ASSEMBLY                  13.5 MM X 13.5 MM SQUARE</b>					
		3 PLACES $\pm$ --- $\pm$ ---	2 PLACES $\pm 0.13$ $\pm$ ---	CHECKED BY MCOLE	DATE 2013/12/09						
		1 PLACE $\pm 0.25$ $\pm$ ---	0 PLACE $\pm$ --- $\pm$ ---	APPROVED BY DMCGOWAN	DATE 2013/12/09	MATERIAL NO. <b>SEE CHART</b>					
ANGULAR $\pm 1/2^\circ$		DRAFT WHERE APPLICABLE MUST REMAIN WITHIN DIMENSIONS		DOCUMENT NO. <b>SD-180414-112</b>							

9 8 7 6 5 4 3 2 1

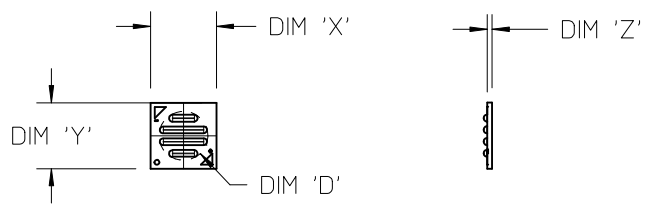


10	9	8	7	6	5	4	3	2	1
COB MFG	TYPE	DIM 'X'	DIM 'Y'	DIM 'Z'	DIM 'D'	OFFSET			
VOSSLOH-SCHWABE	DMC122C	13.5	13.5	1.0	10.0	0.10			

ILLUSTRATION OF P/N 180414-1112 HOLDER MATED WITH LED



DETAIL 1  
SCALE 4:1

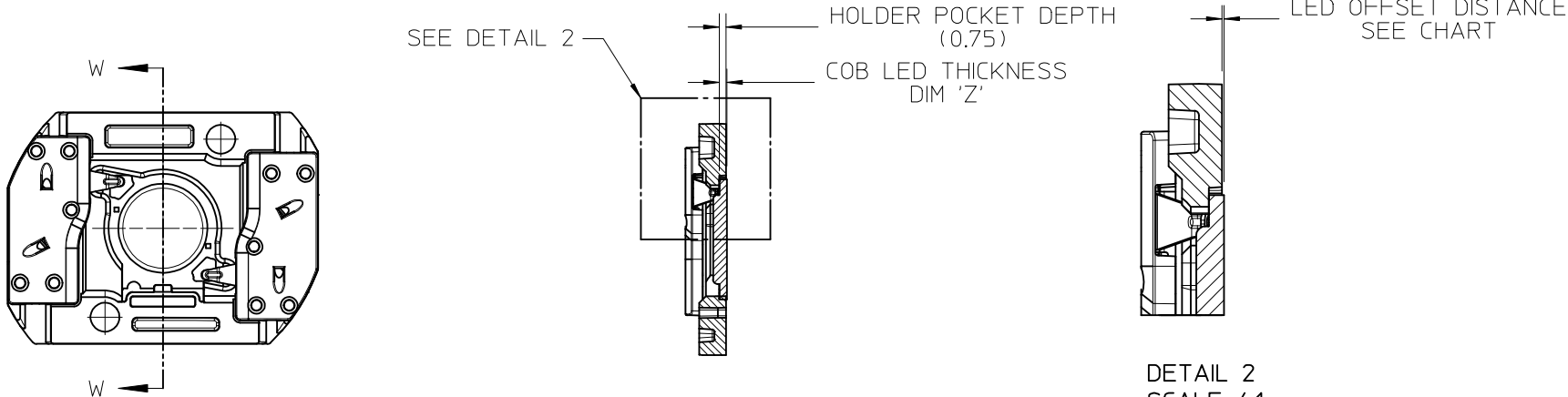


COB LED  
SCALE 1:1

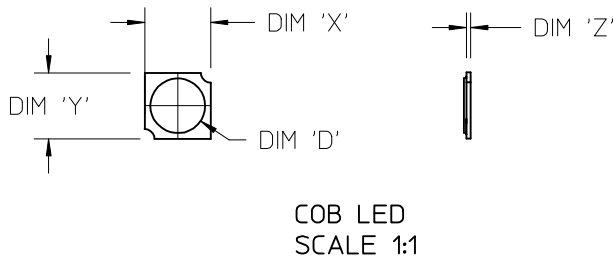
<b>ENTER DESCRIPTION</b> EC NO: SSL2017-0024 DRWNL:ZAB,JANOVSKI 2017/02/21 CHKD: APPR:BP1SZCZOR 2017/03/07 REV C4	<b>QUALITY SYMBOLS</b> $\nabla F=0$ $\nabla E=0$ $\nabla F=0$	<b>GENERAL TOLERANCES (UNLESS SPECIFIED)</b> <table border="1"> <tr> <th></th> <th>mm</th> <th>INCH</th> </tr> <tr> <td>4 PLACES</td> <td>± ---</td> <td>± ---</td> </tr> <tr> <td>3 PLACES</td> <td>± ---</td> <td>± ---</td> </tr> <tr> <td>2 PLACES</td> <td>± 0.13</td> <td>± ---</td> </tr> <tr> <td>1 PLACE</td> <td>± 0.25</td> <td>± ---</td> </tr> <tr> <td>0 PLACE</td> <td>± ---</td> <td>± ---</td> </tr> </table>		mm	INCH	4 PLACES	± ---	± ---	3 PLACES	± ---	± ---	2 PLACES	± 0.13	± ---	1 PLACE	± 0.25	± ---	0 PLACE	± ---	± ---	<b>DIMENSION STYLE</b> <b>MM ONLY</b> DRAWN BY DATE MCOLE 2013/12/09 CHECKED BY DATE MCOLE 2013/12/09 APPROVED BY DATE DMCGOWAN 2013/12/09	SCALE 2:1 DESIGN UNITS METRIC THIRD ANGLE PROJECTION	<b>TITLE</b> COB LED HOLDER ASSEMBLY 13.5 MM X 13.5 MM SQUARE <b>molex</b>
		mm	INCH																				
	4 PLACES	± ---	± ---																				
	3 PLACES	± ---	± ---																				
2 PLACES	± 0.13	± ---																					
1 PLACE	± 0.25	± ---																					
0 PLACE	± ---	± ---																					
<b>ANGULAR</b> ±1/2° <b>DRAFT WHERE APPLICABLE</b> MUST REMAIN WITHIN DIMENSIONS	MATERIAL NO. <b>SEE CHART</b>	DOCUMENT NO. SD-180414-112	SHEET NO. 4 OF 5																				
THIS DRAWING CONTAINS INFORMATION THAT IS PROPRIETARY TO MOLEX INCORPORATED AND SHOULD NOT BE USED WITHOUT WRITTEN PERMISSION																							

10	9	8	7	6	5	4	3	2	1
COB MFG	TYPE			DIM 'X'	DIM 'Y'	DIM 'Z'	DIM 'D'	OFFSET	
CITIZEN	CLL020, CLL022, CLU024, CLU026, CLU028			13.5	13.5	0.90	11.2	0.15	
SEOUL	ZC6			13.5	13.5	0.90	10.0	0.15	
TRIDONIC	SLE G5 LES10			13.5	13.5	0.90	9.4	0.15	
CITIZEN	CLU025, CLU027			13.5	13.5	0.90	7.4	0.15	
CITIZEN	CLU700, CLU701			13.5	13.5	0.90	7.8	0.15	
EVERLIGHT	EAHP1313WA*, EAHP1313WB*, EAHP1313WC*			13.5	13.5	0.90	10.8	0.15	
EVERLIGHT	EA1313 36V/3W			13.5	13.5	0.90	10.8	0.15	
EVERLIGHT	EA1313 36V/6W			13.5	13.5	0.90	10.8	0.15	
EVERLIGHT	EA1313 36V/10W			13.5	13.5	0.90	10.8	0.15	
EVERLIGHT	EA1313 36V/13W			13.5	13.5	0.90	10.8	0.15	
VOSSLOH-SCHWABE	DMC122C			13.5	13.5	1.00	10.0	0.25	

ILLUSTRATION OF P/N 180414-2112 HOLDER MATED WITH LED



SECTION W-W



<b>ENTER DESCRIPTION</b> EC NO: SSL2017-0024 DRWNL:ZAB, JANOVSKI 2017/02/21 CHKD: APPR:BP1SZCZOR 2017/03/07 REV C4	<b>QUALITY SYMBOLS</b> $\nabla F/0$ $\nabla F/0$ $\nabla F/0$	<b>GENERAL TOLERANCES (UNLESS SPECIFIED)</b>		<b>DIMENSION STYLE</b> <b>MM ONLY</b>		<b>SCALE</b> 2:1	<b>DESIGN UNITS</b> METRIC	<b>THIRD ANGLE PROJECTION</b>		
		4 PLACES	± ---	± ---	DRAWN BY	DATE	<b>TITLE</b> COB LED HOLDER ASSEMBLY 13.5 MM X 13.5 MM SQUARE			
		3 PLACES	± ---	± ---	MCOLE	2013/12/09				
		2 PLACES	± 0.13	± ---	CHECKED BY	DATE				
1 PLACE	± 0.25	± ---	MCOLE	2013/12/09						
0 PLACE	± ---	± ---	APPROVED BY	DATE	<b>DOCUMENT NO.</b> SD-180414-112		<b>SHEET NO.</b> 5 OF 5			
ANGULAR ±1/2°			MATERIAL NO.		SEE CHART					
DRAFT WHERE APPLICABLE MUST REMAIN WITHIN DIMENSIONS					THIS DRAWING CONTAINS INFORMATION THAT IS PROPRIETARY TO MOLEX INCORPORATED AND SHOULD NOT BE USED WITHOUT WRITTEN PERMISSION					