



ANATECH ELECTRONICS INC
RF & Microwave Filters & Products

INMARSAT Ceramic Bandpass Filter

Part Number: AM1542B556



Electrical specifications

Center Frequency: 1542 MHz
Bandwidth: 34 MHz
Input / Output Impedance: 50 Ohms
Passband: 1525-1559 MHz
Passband Insertion Loss: 1525-1559 MHz 1.0 dB
Passband Ripple: 1.0 dB max
Passband Return Loss: 1525-1559 MHz 12.0 dB
Rejection: 1460 MHz 25.0 dB
Rejection 2: 1625 MHz 25.0 dB
Rejection 3: 1710 MHz 40.0 dB
Power Handling: 1 W

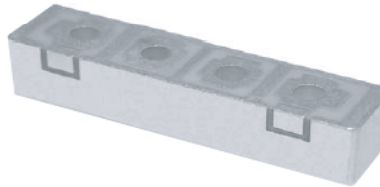
Mechanical

Mounting Method: SMT
Dimensions: 33.58 x 6.68 x 7.85 mm

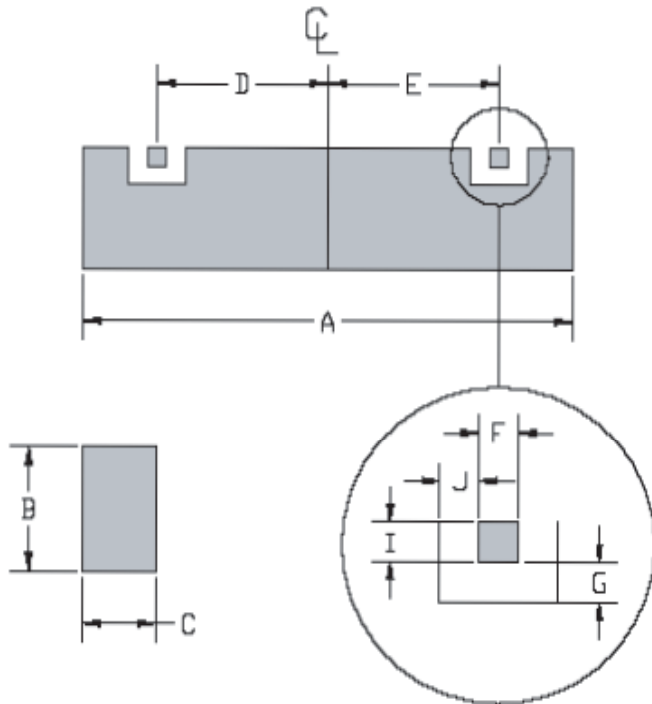
Environmental

Operating Temperature: -40°C to +70°C
Storage Temperature: -50°C to +90°C

This product is RoHs compliant.



Mechanical Drawing:



Dim	Nominal (mm)	Tolerance (mm) +/- or max
A	33.58	max
B	6.68	max
C	7.85	max
D	10.81	0.127
E	10.81	0.127
F	2.62	0.127
G	0.635	0.127
H		
I	2.032	0.127
J	0.635	0.127



ANATECH ELECTRONICS INC
RF & Microwave Filters & Products

INMARSAT Ceramic Bandpass Filter

Part Number: AM1542B556



Response Plot:

